



SHERPA
PREMIUM RACK SYSTEMS

THE THUNDER

RACK SYSTEM INSTALL GUIDE

HARDWARE CHECKLIST

12

M5 HEX
(40MM)



38

1/4"-20
(1") SB



14

1/4"-20 HEX
(9/16")



14

1/4"-20
TNUTS



12

M5 BONDED
WASHERS



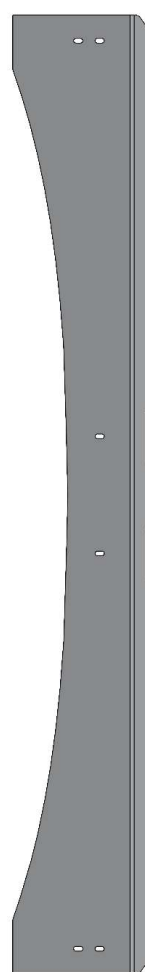
62

1/4" FLAT
WASHERS



1

WIND FAIRING



7

CROSSBARS



2

SIDEPLATES



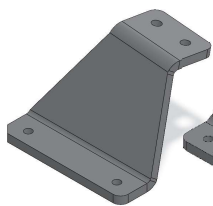
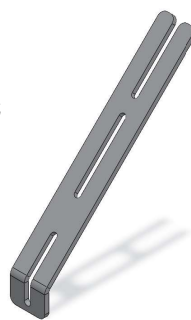
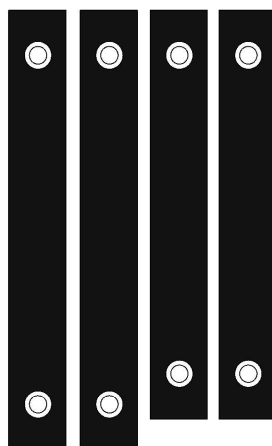
BRACED FAIRING

IF YOUR FAIRING LOOKS DIFFERENT
FROM WHAT IS SHOWN, PLEASE SEE
ALTERNATE INSTRUCTION



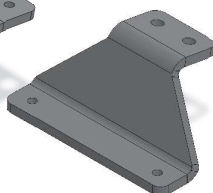
8

RUBBER
SPACERS



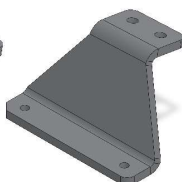
2

FRONT
MOUNTS



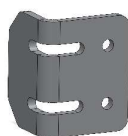
2

MIDDLE
MOUNTS



2

REAR
MOUNTS



2

FAIRING
BRACKETS

2

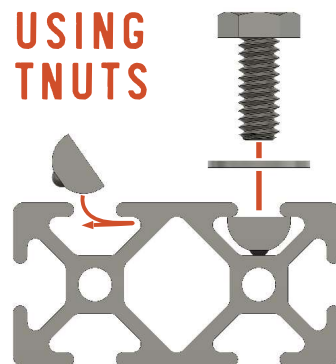
FAIRING
BRACES

BEFORE YOU START

Remove your stock roof rack (if applicable). Loosen all stock rack bolts before fully removing any of them. This will prevent the capture plates from working loose inside of the roof. Work slowly when removing the stock rack as not to break the plastic sleeves.

The below assembly images may differ slightly in appearance from actual product.

USING TNUTS

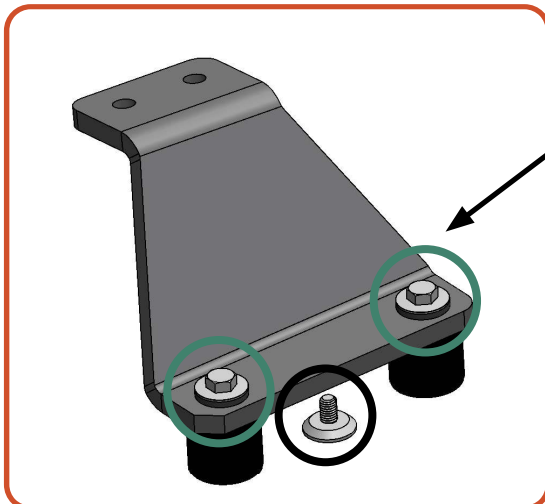


ROOF DIAGRAM

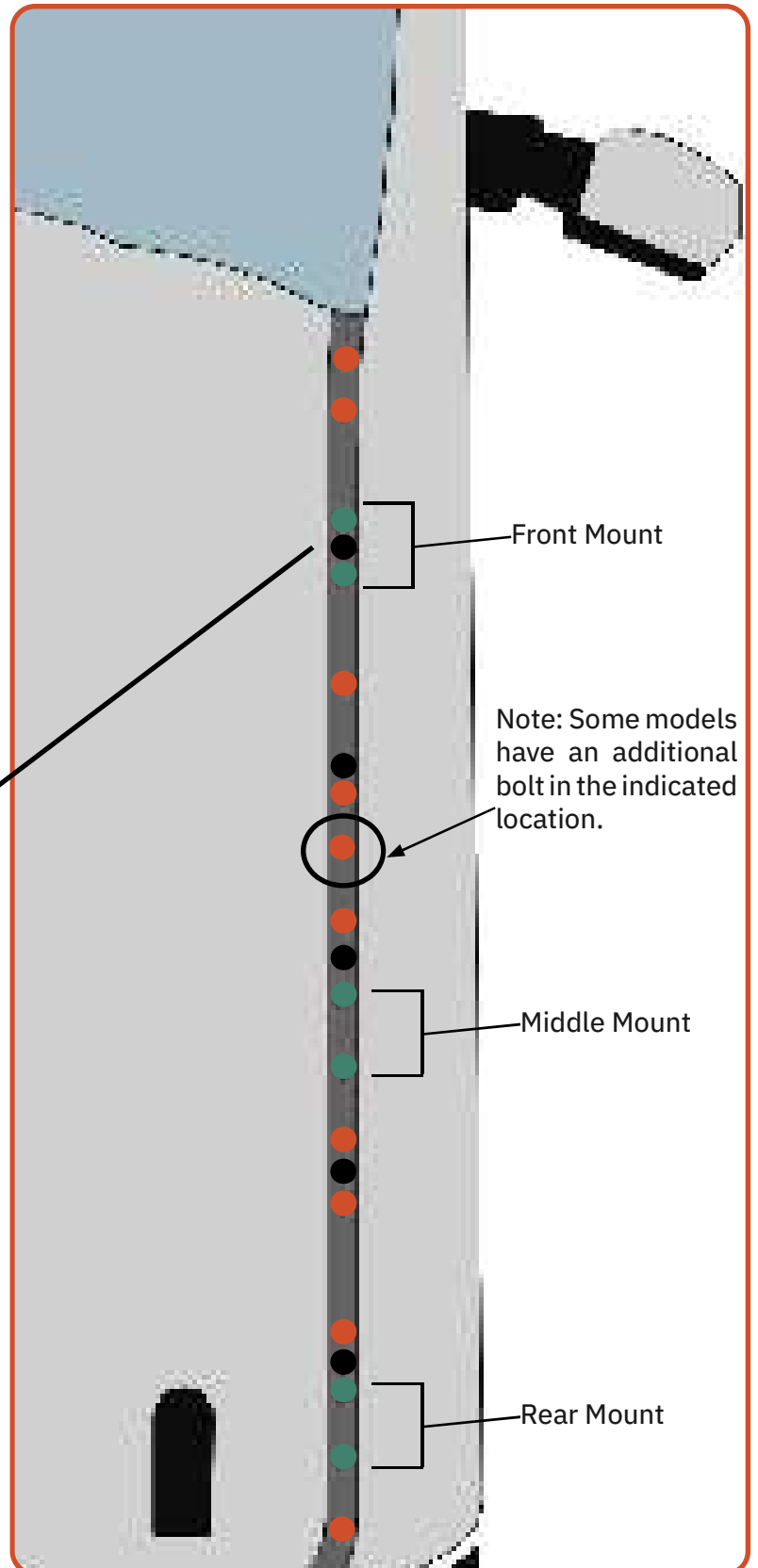
01 ADJUSTABLE MOUNT

Remove the plastic trim in the gutters of the roof by prying upwards with fingers or a non-marring tool. The Ford F250/F350/F450 SuperCrew has several bolts and studs underneath the trim, some of which will be used for the installation of the rack. It is important not to remove any bolts that are not utilized by the rack to prevent leakage. The bolts that should be removed are marked by the **green dots** in the diagram.

The **black dots** indicate a stud that can be used to locate the mounts in their respective positions, and the **orange dots** represent bolts that should not be removed.



The front mounting location includes a stud. The hardware kit contains 4x round, single-bolt rubber spacers that allow the front mounting bracket to bridge over the stud. **No other mount will bridge over a stud.**



MOUNTS

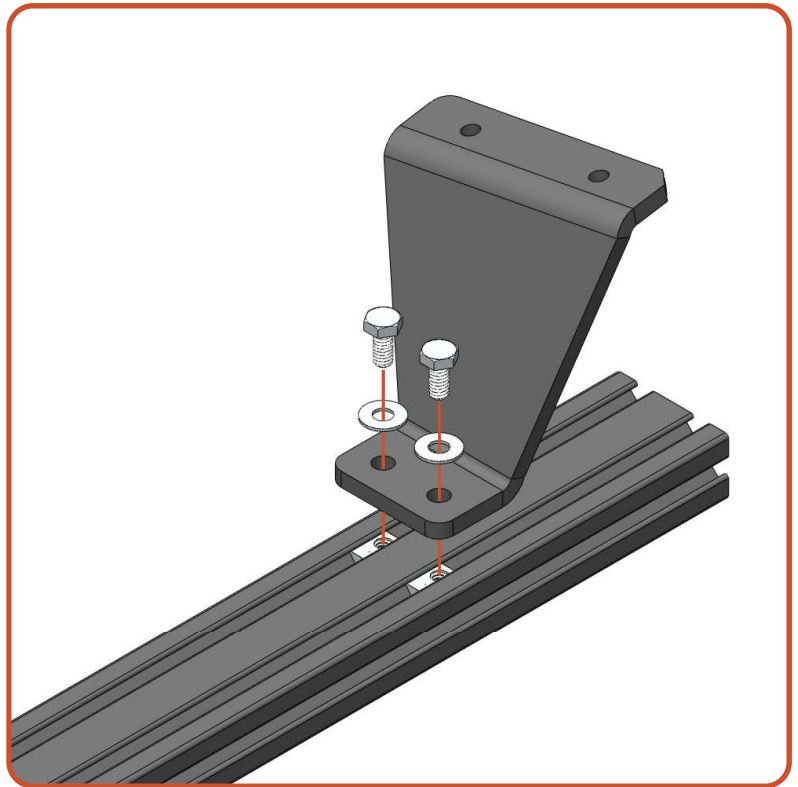
01 FRONT MOUNT ASSEMBLY

Required Components:

- 1 Crossbar
- 2 Front Mounts
- 4 1/4"-20 x 9/16" Hex Bolts
- 4 1/4" Flat Washers
- 4 Tnuts

Drop 4 tnuts into the slots on the crossbar and line them up with the holes in mounts. Secure top of the mounting bracket to the crossbar leaving the hardware loose so that it can be adjusted during a later step.

Note: Front mounts have the "F" designation at the end.



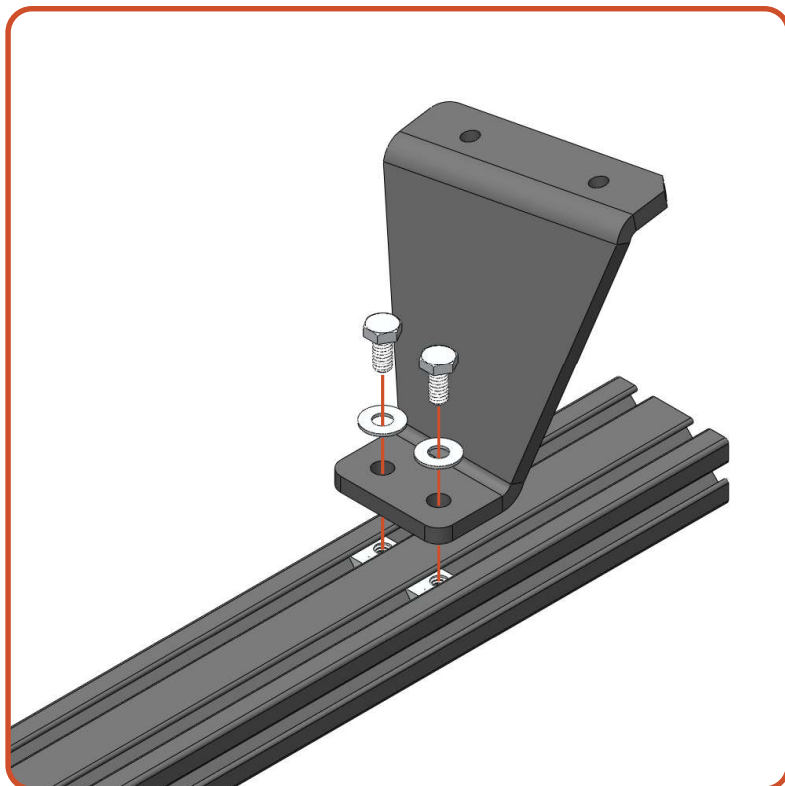
02 REAR MOUNT ASSEMBLY

Required Components:

- 1 Crossbar
- 2 Rear Mounts
- 4 1/4"-20 x 9/16" Hex Bolts
- 4 1/4" Flat Washers
- 4 Nuts

Repeat assembly.

Note: Rear mounts have the "R" designation at the end.



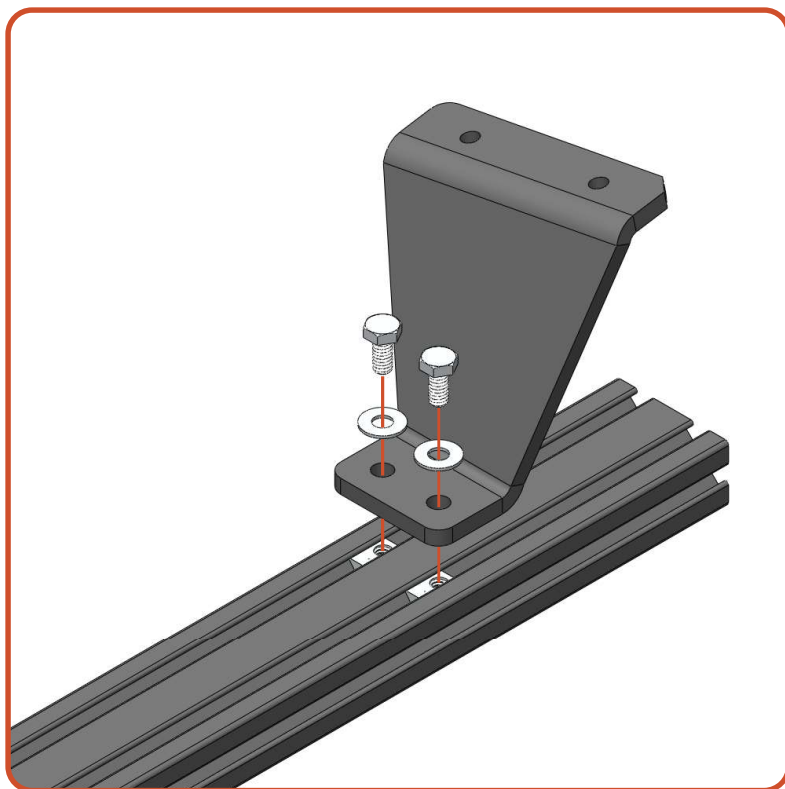
03 MID MOUNT ASSEMBLY

Required Components:

- 1 Crossbar
- 2 Rear Mounts
- 4 1/4"-20 x 9/16" Hex Bolts
- 4 1/4" Flat Washers
- 4 Nuts

If your rack comes with a middle mount(s), repeat assembly.

Note: Middle mounts have the "M" designation at the end.



MOUNT INSTALL

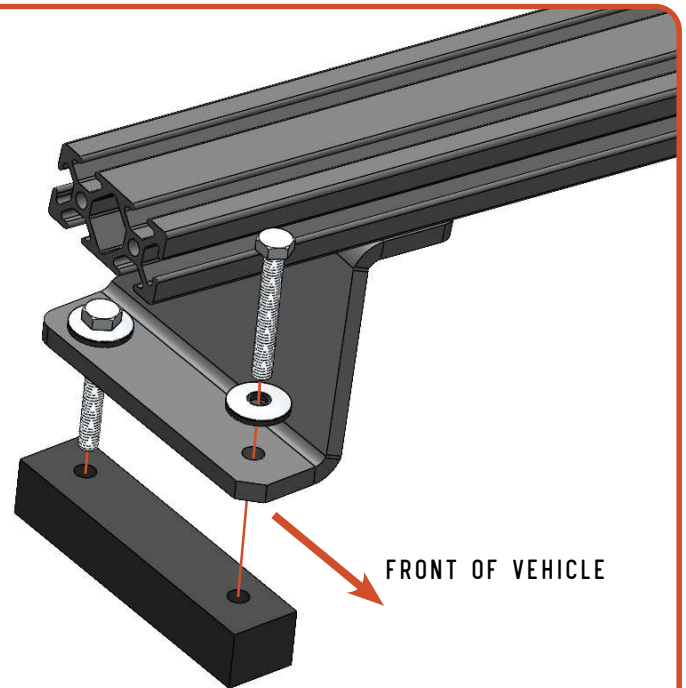
01 INSTALL ON VEHICLE

Required Components:

- 4** M5-1.25x45 Hex Bolts
per mount assembly
- 4** M5 Bonded Washers
per mount assembly
- 2** Rubber Spacers
per mount assembly

Position the mounting bracket on the rubber spacer. Apply a drop of blue threadlocker to each of the bolt threads and secure them with bonded washers passed through the bracket, rubber, and into the holes in the roof.

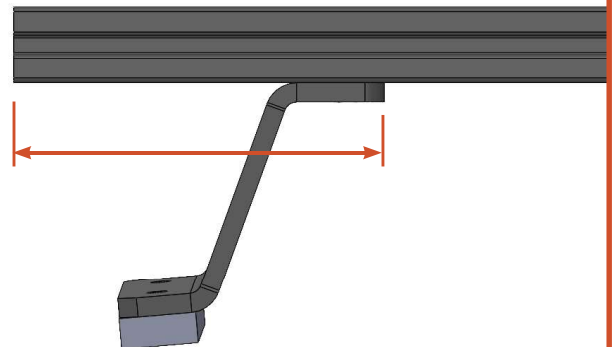
Note: Chamfered corner on the lower part of the mount faces the front of the vehicle.



The bonded washers should compress and become flat, but not concave. Do not over tighten these mounts.

02 CENTER THE MOUNTS

After the main support crossbar have been secured to the vehicle, use a tape measure and center all of the bars on the vehicle. Measure from the inside edge of the mount to the outside face of the crossbar and make these equal side-to-side. Tighten the hardware to the crossbar.



SIDEPLATES

01 SIDEPLATE INSTALL

Required Components:

- 2** Sideplates
- 4** 1/4"-20x1" Socket Bolts
per mount assembly
- 4** 1/4" Washers
per mount assembly

Align the small slots in the sideplates with the ends of the main support crossbars. Secure them using bolts and washers. Leave the bolts loose enough to move the sideplate to the position that matches the curvature of the vehicle.

Once the rack is positioned correctly, tighten down all of the hardware for the sideplates.



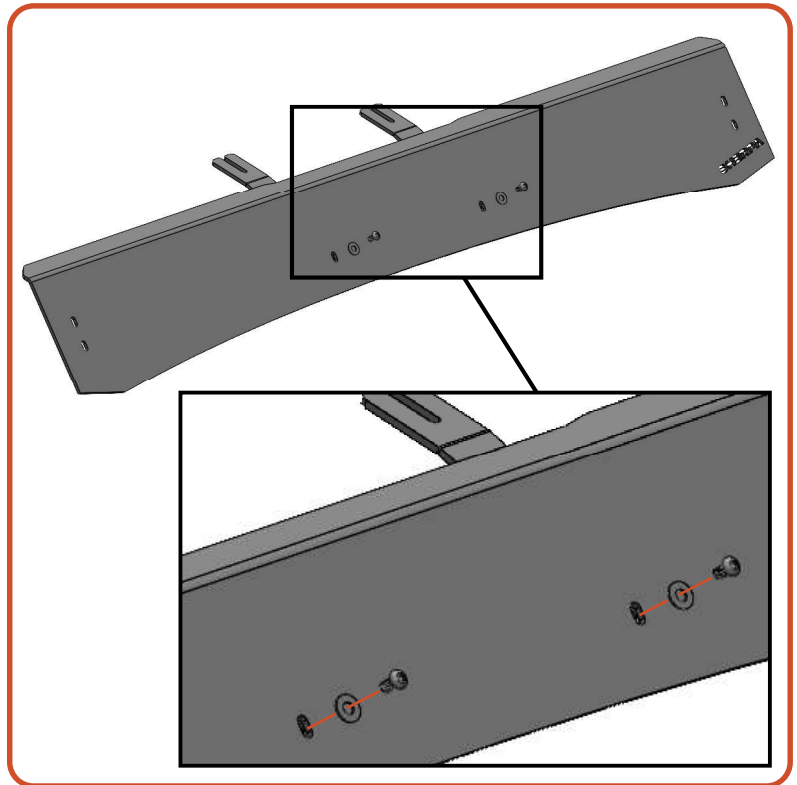
WIND FAIRING

01 INSTALL BRACES

Required Components:

- 2 Braces
- 2 1/4"-20x1" Socket Bolts
- 2 1/4" Flat Washers

Secure braces to the fairing leaving the hardware loose so that it can be adjusted during a later step.



02 FAIRING BRACKETS

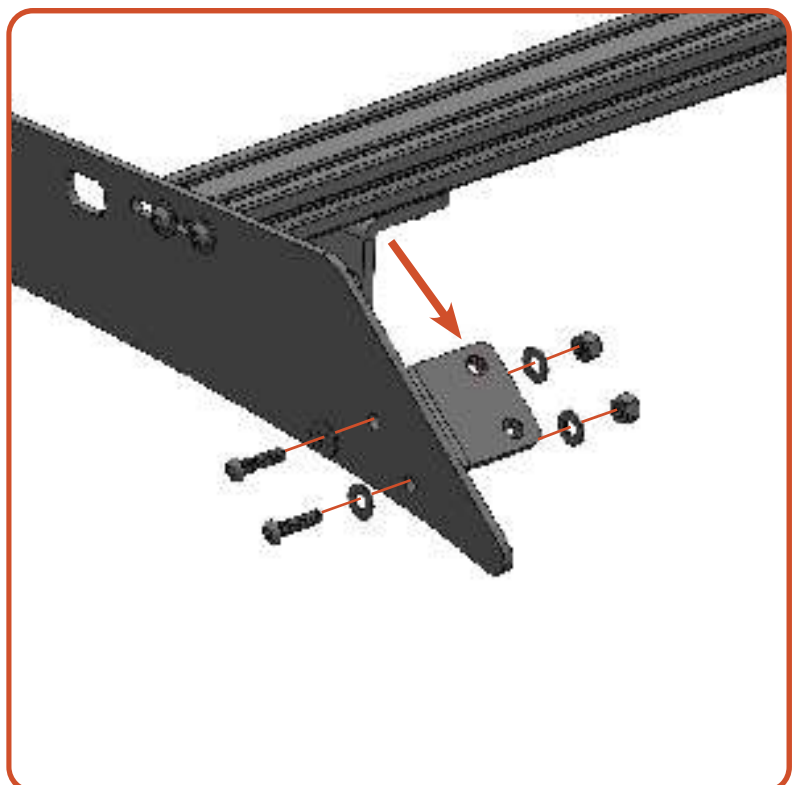
Required Components:

- 2 Fairing Brackets
- 4 1/4"-20x1" Socket Bolts
- 8 1/4" Flat Washers
- 4 1/4"-20 Nuts

Secure the fairing brackets to the sideplates leaving the hardware loose so that it can be adjusted during a later step.

Note: Your sideplates may have either holes or slots for this section.

Note: The pressed in nuts face the front of the vehicle as noted by the arrow.



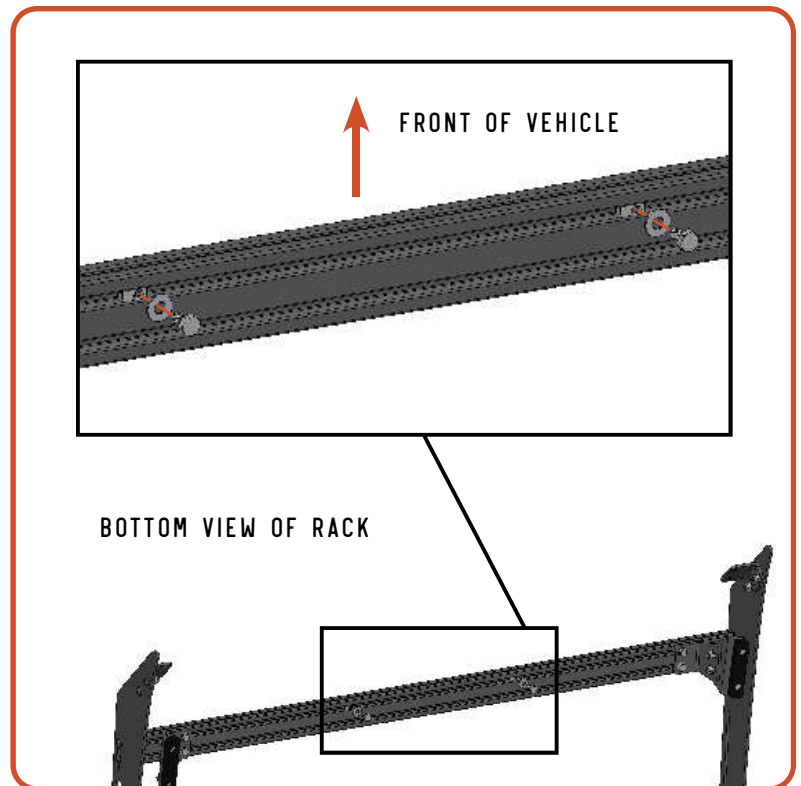
03 CROSSBAR HARDWARE

Required Components:

- 2 Tnuts
- 2 1/4"-20x1/2" Socket Bolts
- 2 1/4" Flat Washers

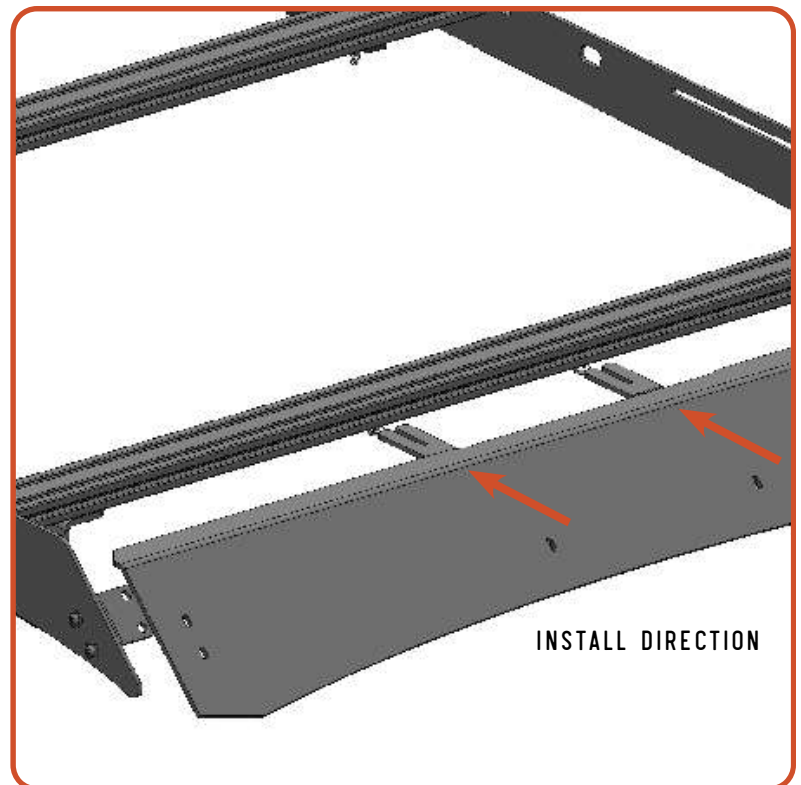
Insert Tnuts into the bottom of the front crossbar assembly.

Install the screws/washers leaving them loose so that braces can be installed during a later step.



03 ALIGN FAIRING

Position the wind fairing onto the vehicle aligning the braces to the loose screws



04 MOUNT FAIRING

Required Components:

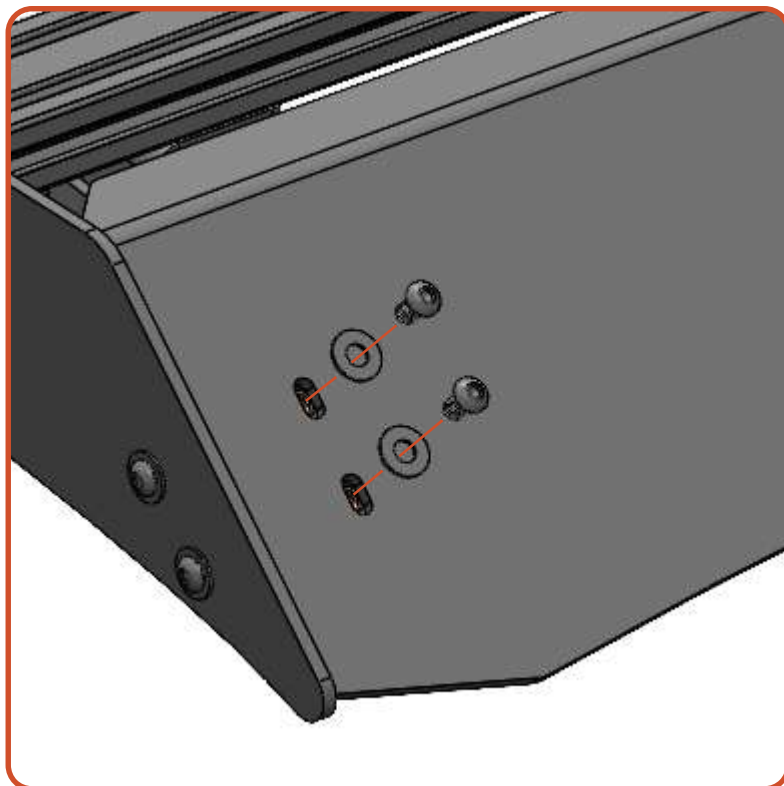
4 1/4"-20x1" Socket Bolts

4 1/4" Flat Washers

Align the bottom of the fairing with the tip of the roof rack and secure it using bolts and washers.

Tighten all fairing hardware in addition to brace hardware from earlier steps.

The fairing can be adjusted up or down if wind noise is detected. Small adjustments make a big difference here.





04 INSTALL CROSSBARS

Required Components:

Remaining Crossbars

4 1/4"-20 x 1" Socket Bolts
per crossbar

4 1/4" Flat Washers
per crossbar

Secure all of the remaining crossbars to the rack system. Space evenly or position according to your load requirements.

NOW GET OUT THERE AND
EXPLORE.

WELCOME TO THE SHERPA FAMILY!
MAKE SURE TO FOLLOW US ON YOUR SOCIALS AND TAG US IN YOUR ADVENTURES.

All products built and designed by Sherpa Equipment Company are intended for off-road use and should be assembled, installed, and used according to Sherpa Equipment Company's recommendations. Sherpa Equipment Company's products should be used safely with good judgment towards others and surroundings.

By installing Sherpa Equipment Company's products on your vehicle you assume all liability. Sherpa Equipment Company will not be held liable for damages or loss associated with the installation or use of its products. It is recommended that you inspect your roof rack within the first 100 miles of installation and every 500 miles after.