



SHERPA
PREMIUM RACK SYSTEMS

THE CRESTONE SPORT

RACK SYSTEM INSTALL GUIDE

HARDWARE CHECKLIST

8

M8-1.25
(45MM)



40

1/4"-20
(1") SB



6

1/4"-20
(3/4") SB



4

1/4"-20
(9/16") HEX



4

1/4"-20
(1") CARRIAGE



2

1/4"-20
(1/2") HEX



6

1/4"-20
TNUT



68

1/4" FLAT
WASHER



8

M8 BONDED
WASHER



16

1/4"-20
NUT



1

WIND FAIRING



7

CROSSBARS



2

SIDEPLATES



2

ADJ FRONT
MOUNTS



2

MIDDLE
MOUNTS



2

REAR
MOUNTS



4

RUBBER
SPACERS



8

M8 SPACERS



2

FAIRING
BRACKETS



2

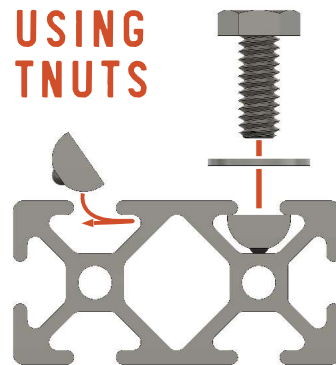
FAIRING
BRACES

BEFORE YOU START

Remove your stock roof rack (if applicable). Loosen all stock rack bolts before fully removing any of them. This will prevent the capture plates from working loose inside of the roof. Work slowly when removing the stock rack as not to break the plastic sleeves.

The below assembly images may differ slightly in appearance from actual product.

USING TNUTS



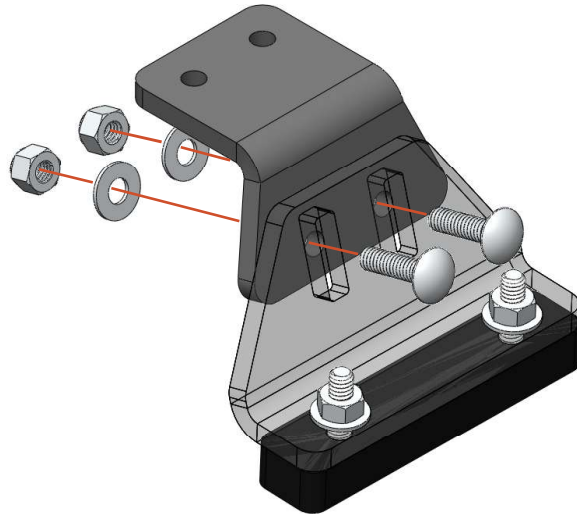
MOUNTS

01 ADJUSTABLE MOUNT

Required Components:

- 4 1/4"-20x1" Carriage Bolts
- 4 1/4" Washers
- 4 1/4"-20 Nuts

Secure the lower and upper adjustable mount brackets leaving the hardware loose so that it can be adjusted during a later step.

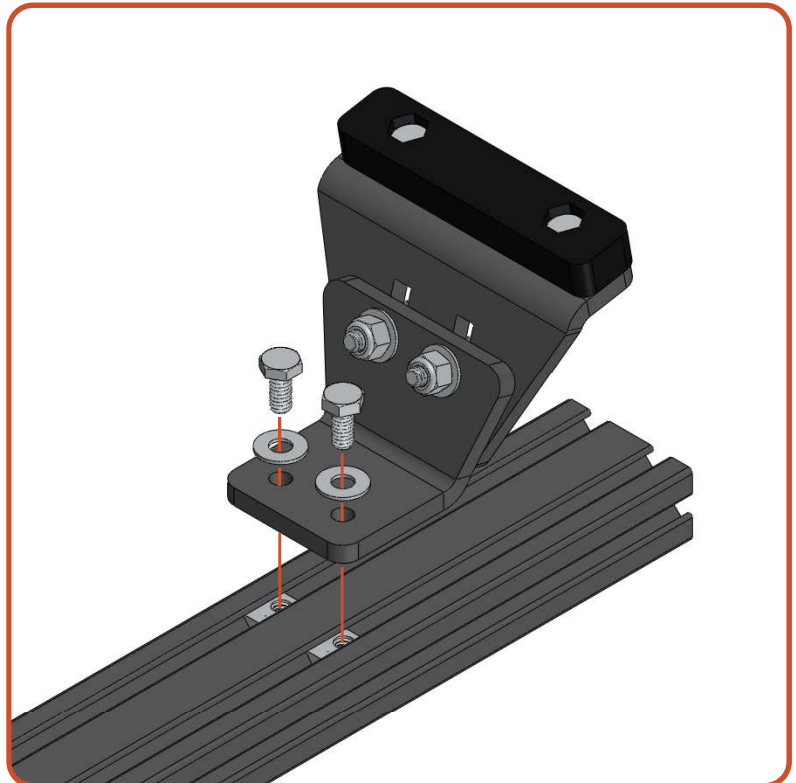


02 MOUNT ASSEMBLY

Required Components:

- 1 Crossbar
- 2 Adj Front Mounts
- 4 1/4"-20 x 9/16" Hex Bolts
- 4 1/4" Flat Washers
- 4 Tnuts

Drop 4 tnuts into the slots on the crossbar and line them up with the holes in mounts. Secure the top of the mounting bracket to the crossbar leaving the hardware loose so that it can be adjusted during a later step.



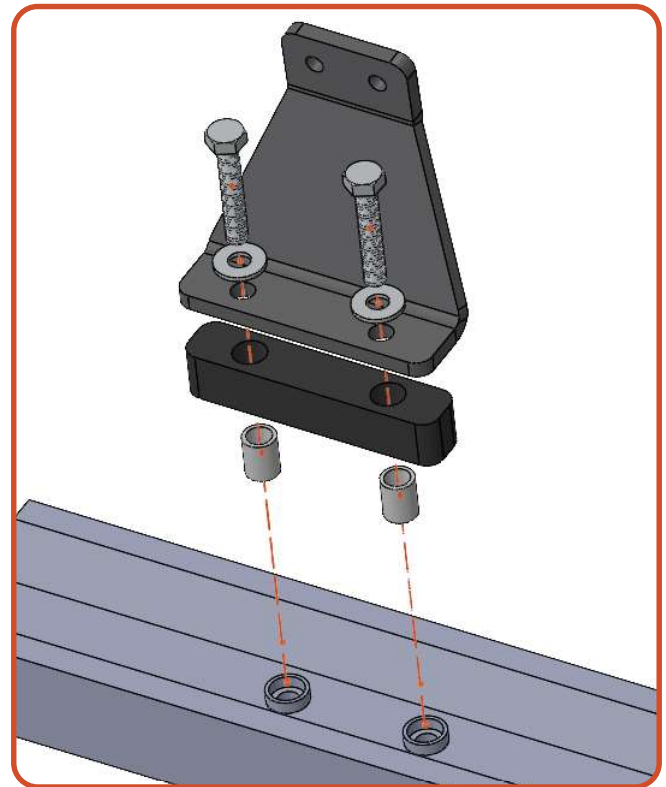
SPACER ASSEMBLY

Exploded View

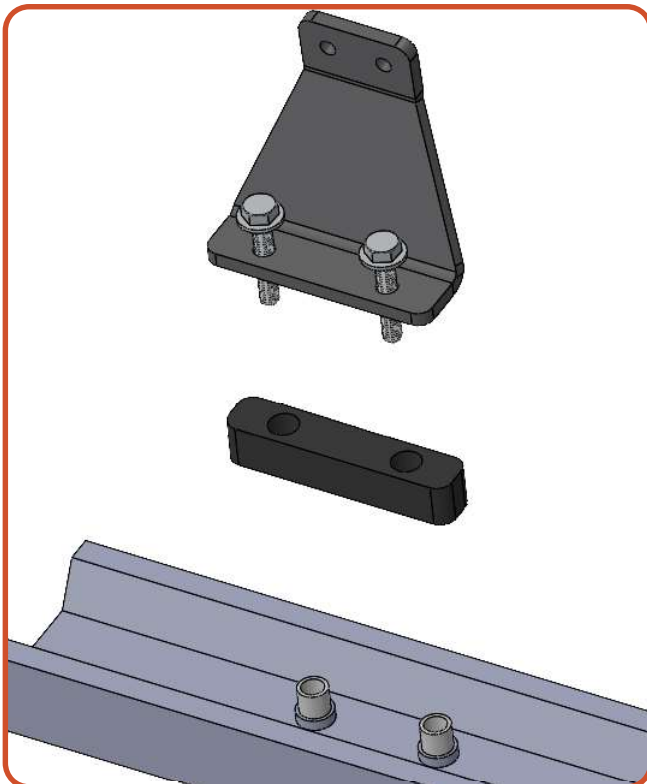
01 SPACER INSTALL TIP

When installing the mounts in the roof gutter, place the stainless spacers in the plastic holes in the gutter. Once the stainless spacers are set into the holes, put the black rubber component over the spacers pressing into place.

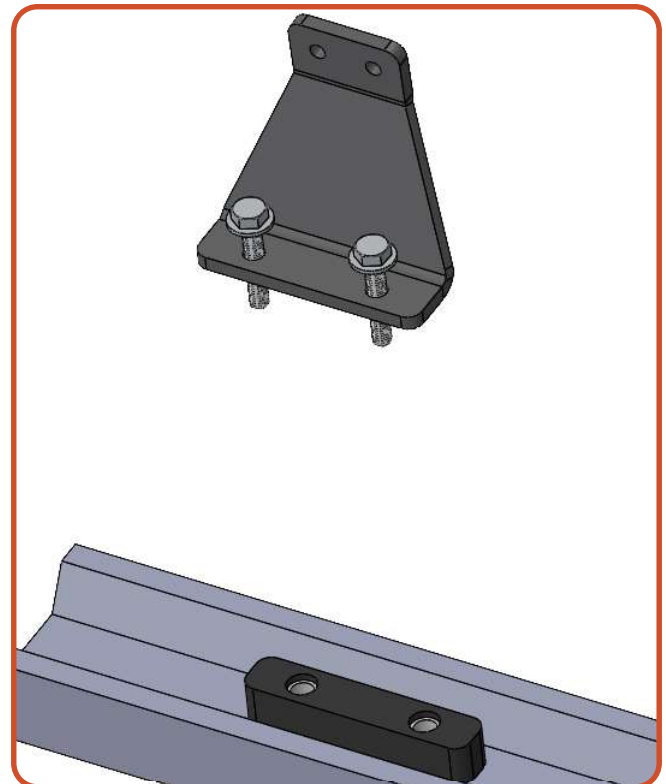
The stainless spacers must be used.



Step One



Step Two



MOUNT INSTALL

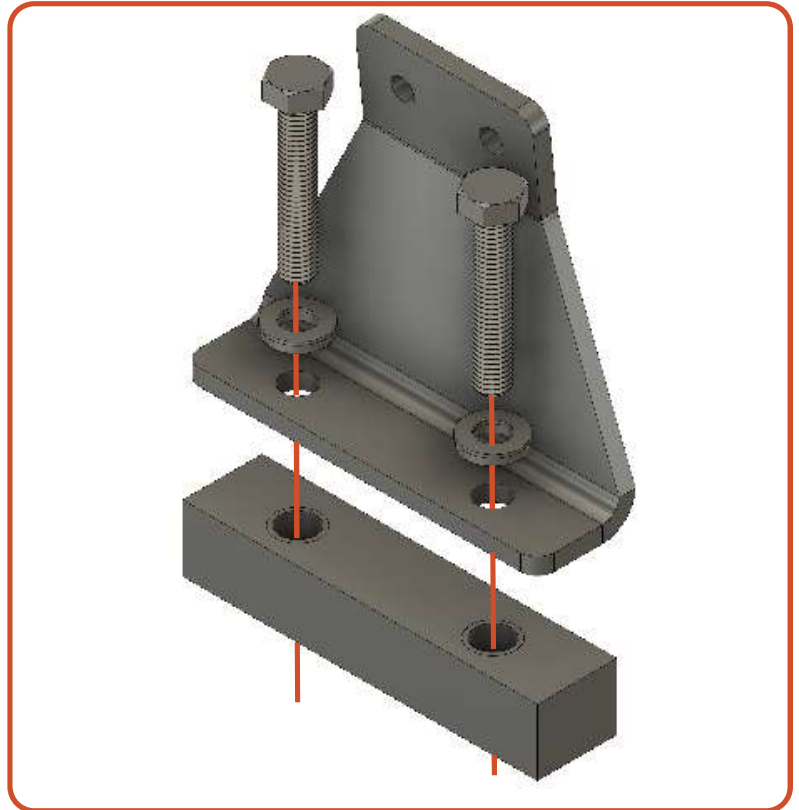
01 INSTALL ON VEHICLE

Required Components:

- 2** M8-1.25x45 Hex Bolts
per mount assembly
- 2** M8 Bonded Washers
per mount assembly
- 1** Rubber Spacers
per mount assembly
- 2** M8 Spacers
per mount assembly

Install the rear and middle mounting brackets using the M8 hardware. The tall side of the bracket should face out from the vehicle. Align the rubber spacers with the factory holes in your roof gutter. The metal sleeves should slide over the OEM white plastic tubes. **Torque spec is 22 in-lbs.**

The bonded washers should compress and become flat, but not concave. Do not over tighten these mounts.

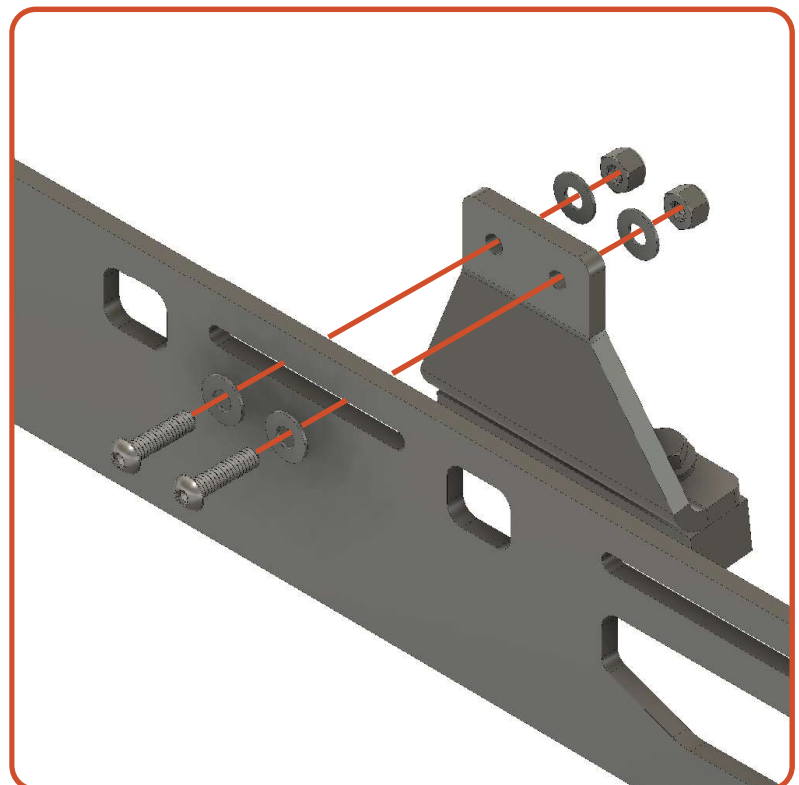


02 ATTACH SIDE PLATE

Required Components:

- 2** 1/4"-20x1" Socket Buttons
per mount assembly
- 2** 1/4"-20 Nylock Nuts
per mount assembly
- 4** 1/4" Washers
per mount assembly

After the main support crossbars have been secured to the vehicle, you can install the side plates. Align the small slots in the rack side with the rear and middle brackets. Secure it using the 1/4" bolts, washers, and nylock nuts. Leave the bolts loose and align the rack with the body line of the vehicle. When positioned correctly, tighten the M8 bolts.



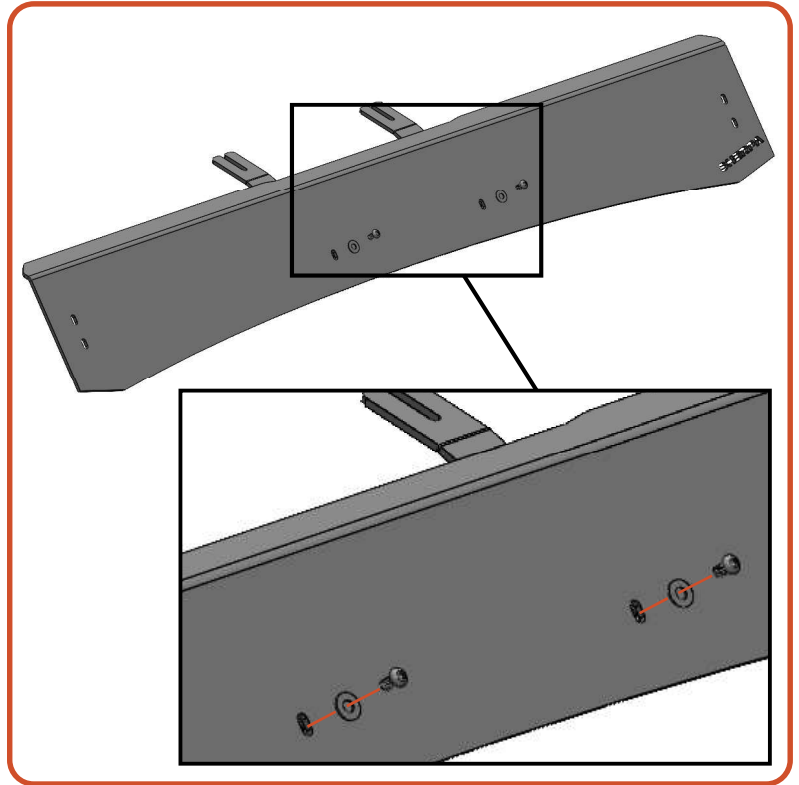
WIND FAIRING

01 INSTALL BRACES

Required Components:

- 2 Braces
- 2 1/4"-20x1" Socket Bolts
- 2 1/4" Flat Washers

Secure braces to the fairing leaving the hardware loose so that it can be adjusted during a later step.



02 FAIRING BRACKETS

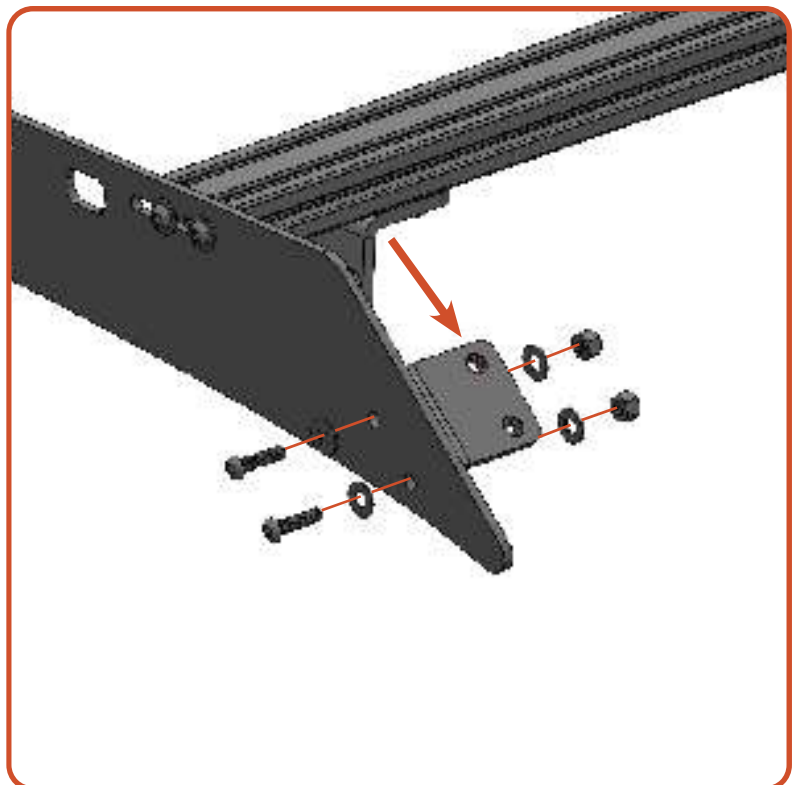
Required Components:

- 2 Fairing Brackets
- 4 1/4"-20x1" Socket Bolts
- 8 1/4" Flat Washers
- 4 1/4"-20 Nuts

Secure the fairing brackets to the sideplates leaving the hardware loose so that it can be adjusted during a later step.

Note: Your sideplates may have either holes or slots for this section.

Note: The pressed in nuts face the front of the vehicle as noted by the arrow.



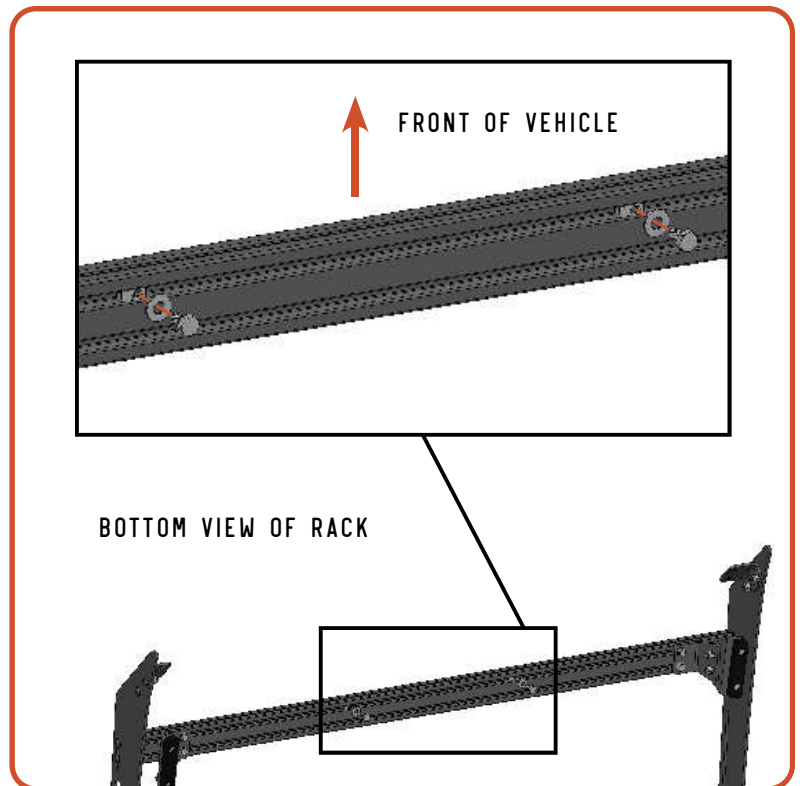
03 CROSSBAR HARDWARE

Required Components:

- 2 Tnuts
- 2 1/4"-20x1/2" Socket Bolts
- 2 1/4" Flat Washers

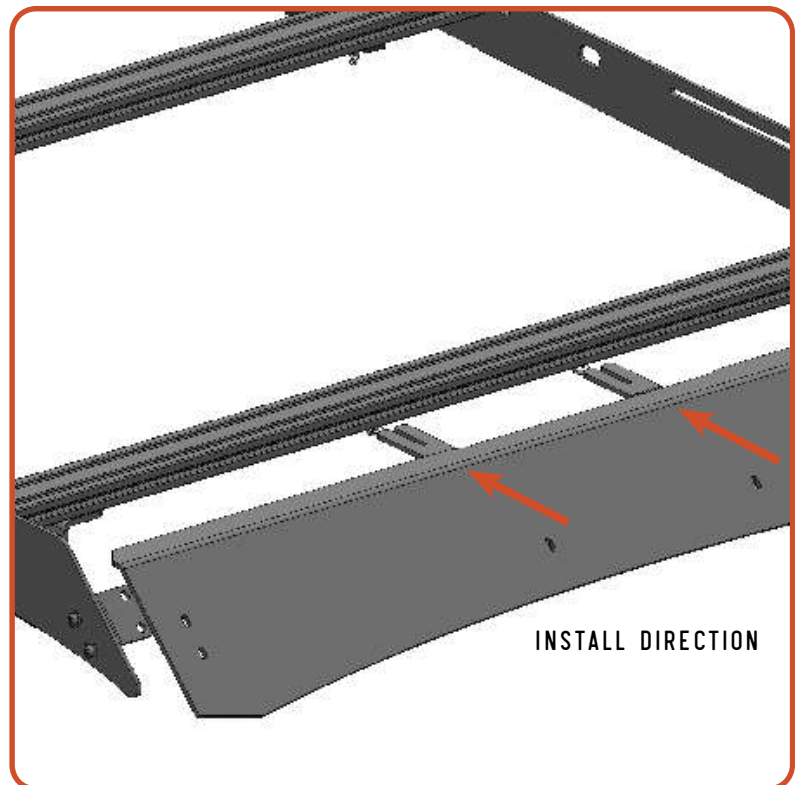
Insert Tnuts into the bottom of the front crossbar assembly.

Install the screws/washers leaving them loose so that braces can be installed during a later step.



03 ALIGN FAIRING

Position the wind fairing onto the vehicle aligning the braces to the loose screws



04 MOUNT FAIRING

Required Components:

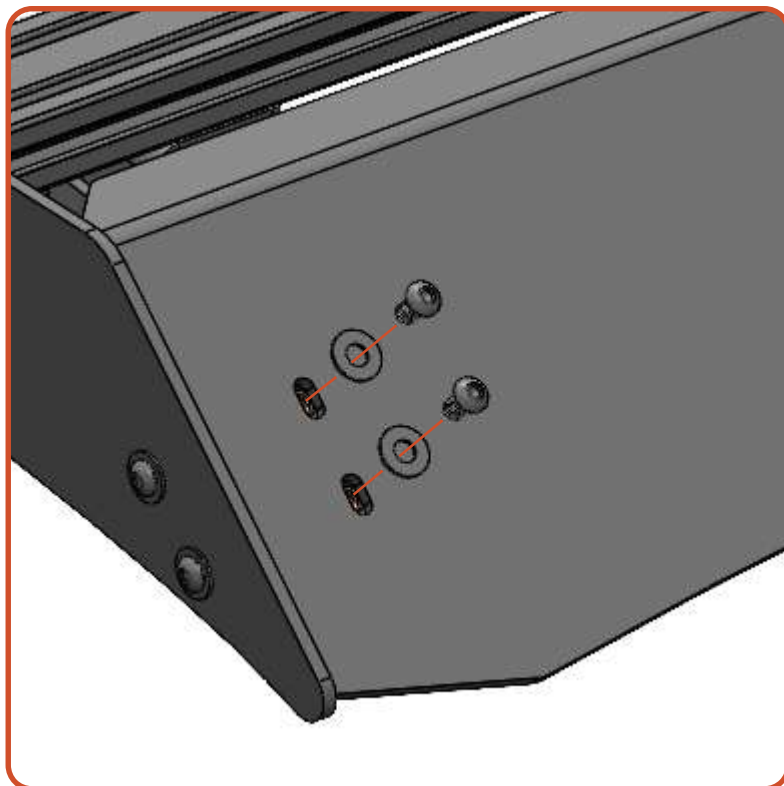
4 1/4"-20x1" Socket Bolts

4 1/4" Flat Washers

Align the bottom of the fairing with the tip of the roof rack and secure it using bolts and washers.

Tighten all fairing hardware in addition to brace hardware from earlier steps.

The fairing can be adjusted up or down if wind noise is detected. Small adjustments make a big difference here.



MOUNT INSTALL

01 ADJ MOUNT INSTALL

Required Components:

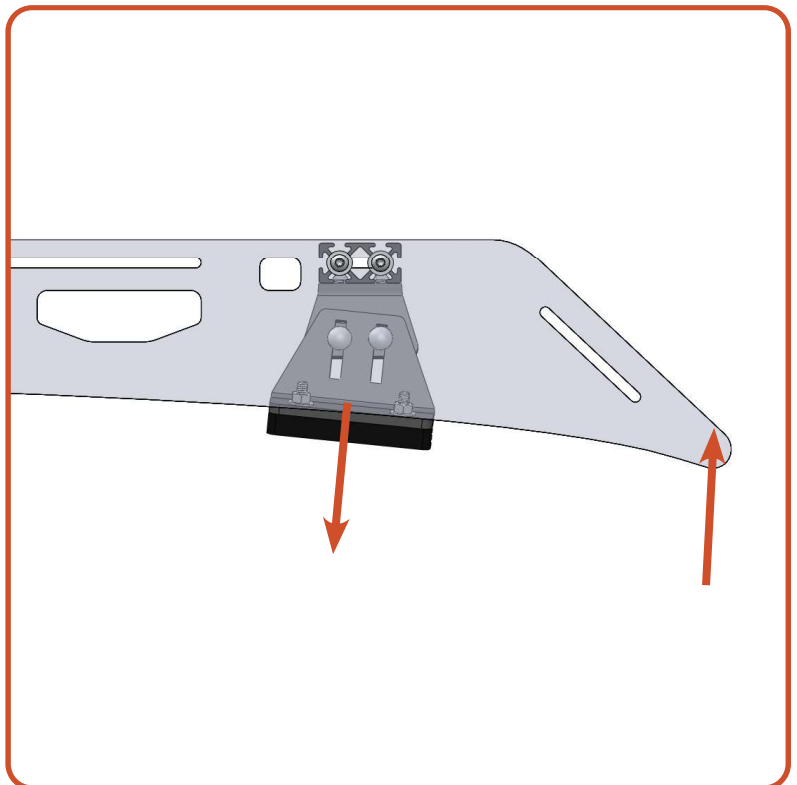
4 1/4"-20x1" Socket Bolts

4 1/4" Washers

Align the small slots in the sideplates with the front adjustable mount assembly crossbar. Secure it using bolts and washers.

Apply upward pressure on the front of the rack and insert a microfiber towel or other soft buffer between the front of the rack and the vehicle's roof. Adjust the angle and height of the mounting foot to sit as firmly on the vehicle's roof as possible, then tighten the hardware in the center of the mount. If possible, it is recommended to position these mounts on the plastic gutter trim to prevent possible paint damage.

Once the mounts are in the correct position, remove the buffer and inspect the rack to make sure it is firm.





04 INSTALL CROSSBARS

Required Components:

Remaining Crossbars

4 1/4"-20 x 1" Socket Bolts
per crossbar

4 1/4" Flat Washers
per crossbar

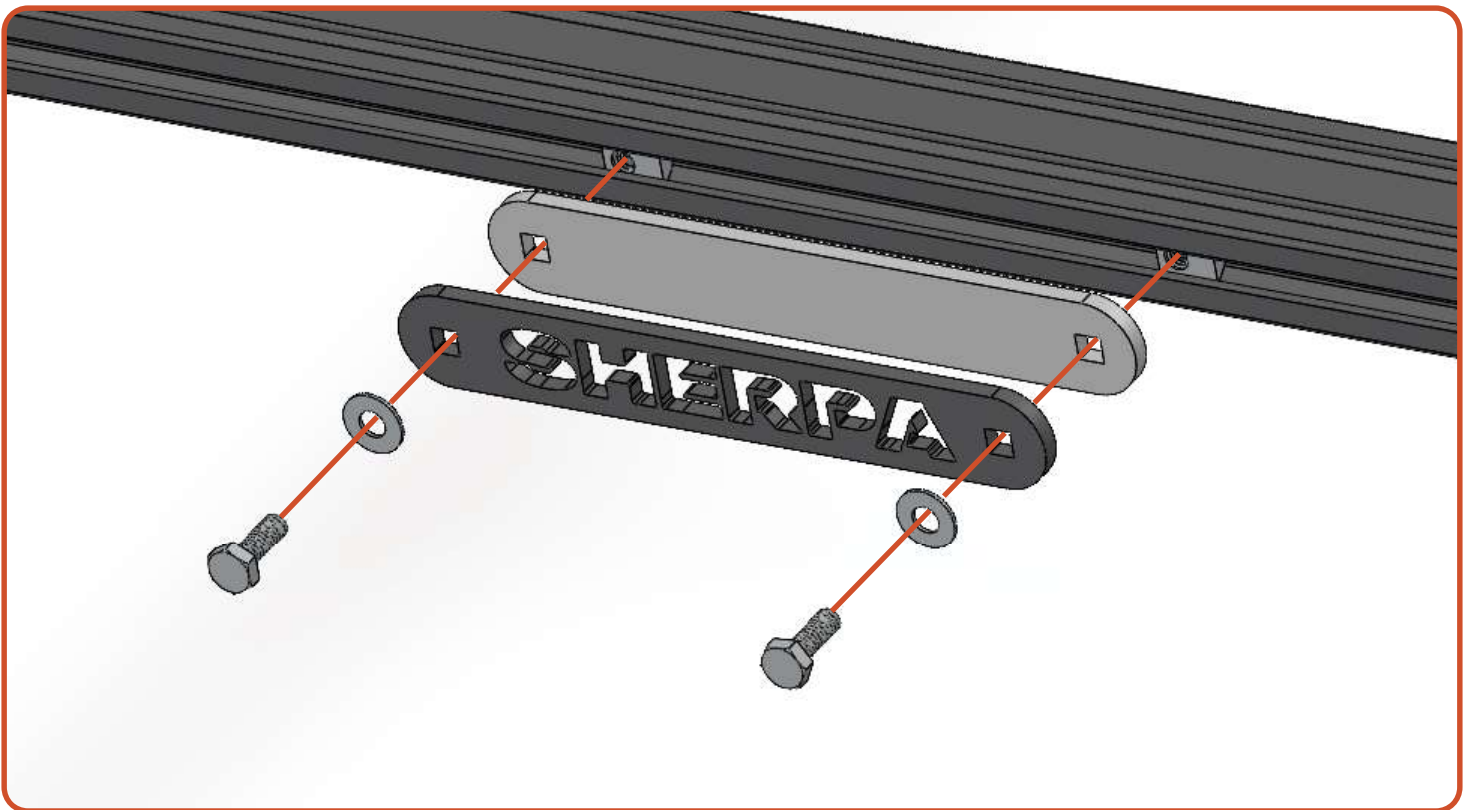
Secure all of the remaining crossbars to the rack system. Space evenly or position according to your load requirements.

SHERPA NAME PLATE

Required Components:

- 2 1/4"-20 x 9/16" Hex Bolts
- 2 1/4"-20 Nuts
- 2 1/4" Flat Washers
- 1 Sherpa Name Plates
- 1 Name Plate Backers

Place the nuts into the rear most crossbar on the rack. Using the 1/4"-20 x 0.75" socket buttons, and 1/4" flat washers attach the name plate and name plate backer to the cross bar.



NOW GET OUT THERE AND
EXPLORE.

WELCOME TO THE SHERPA FAMILY!
MAKE SURE TO FOLLOW US ON YOUR SOCIALS AND TAG US IN YOUR ADVENTURES.

All products built and designed by Sherpa Equipment Company are intended for off-road use and should be assembled, installed, and used according to Sherpa Equipment Company's recommendations. Sherpa Equipment Company's products should be used safely with good judgment towards others and surroundings.

By installing Sherpa Equipment Company's products on your vehicle you assume all liability. Sherpa Equipment Company will not be held liable for damages or loss associated with the installation or use of its products. It is recommended that you inspect your roof rack within the first 100 miles of installation and every 500 miles after.