



**SHERPA**  
PREMIUM RACK SYSTEMS

# **GX470**

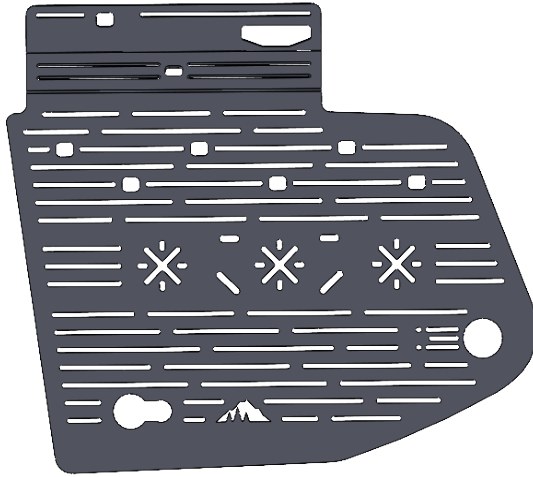
# **WINDOW PANEL**

INSTALL GUIDE

# HARDWARE CHECKLIST

**1**

WINDOW PANEL  
(DRIVER OR  
PASSNGER)



**2**

1/4"-20 X 3/4"  
HEX BOLT



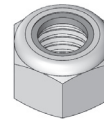
**4**

1/4"-20 X 1"  
SOCKET BUTTON



**6**

1/4"-20  
NYLOCK NUT



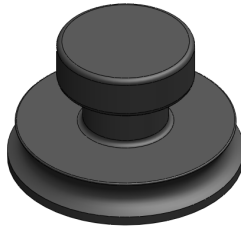
**12**

1/4" WASHER



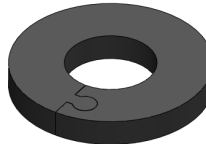
**2**

SUCTION CUPS



**2**

RUBBER SPACERS



**1**

SUCTION CUP  
STANDOFF



## BEFORE YOU START

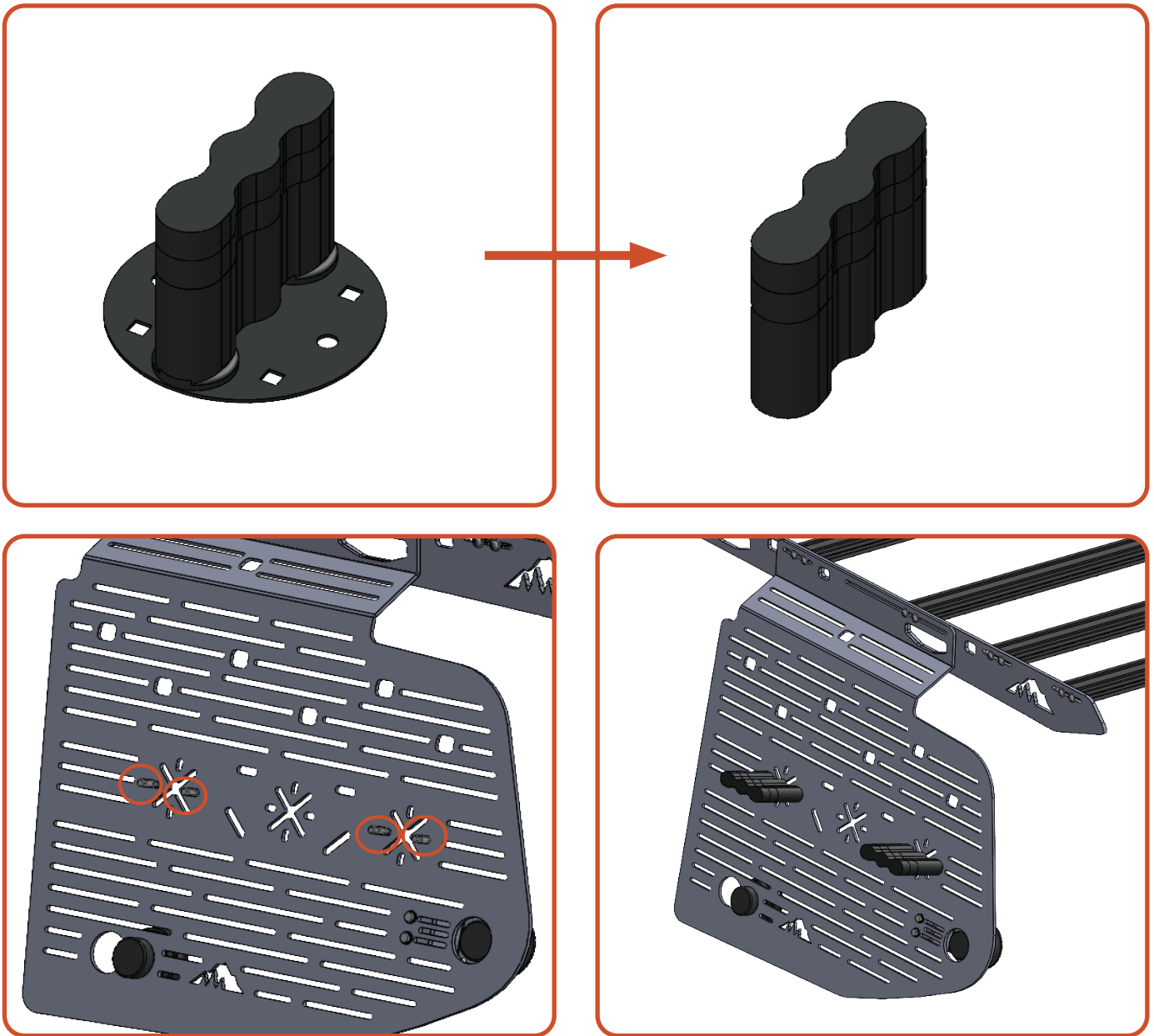
Installing a window panel can be difficult alone. Getting another person to lend a hand on the install can make the process much easier. The process outlined in these instructions is what Sherpa has found to be the most consistent and direct method for installation. Ensure window is clean prior to installation.

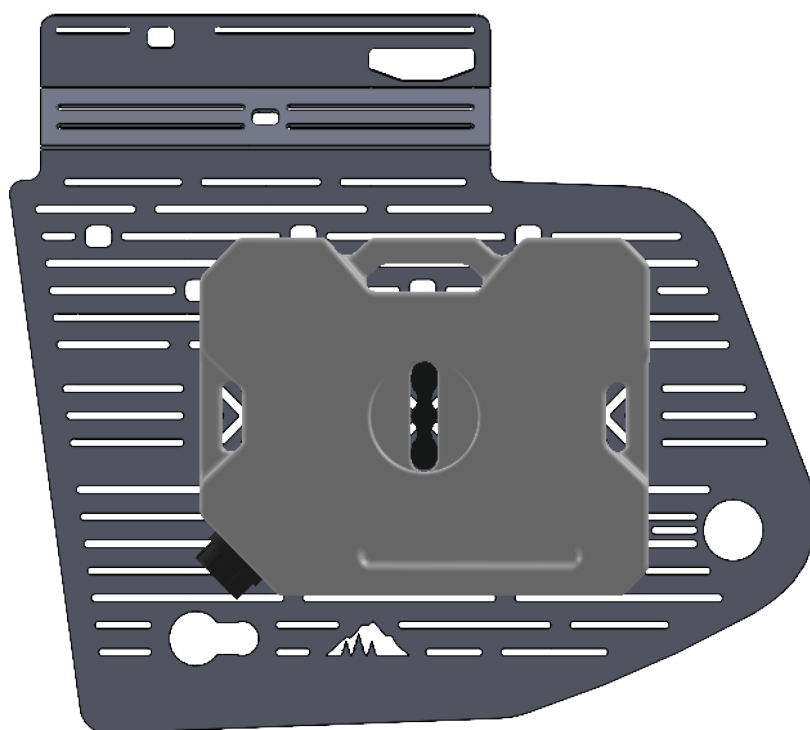
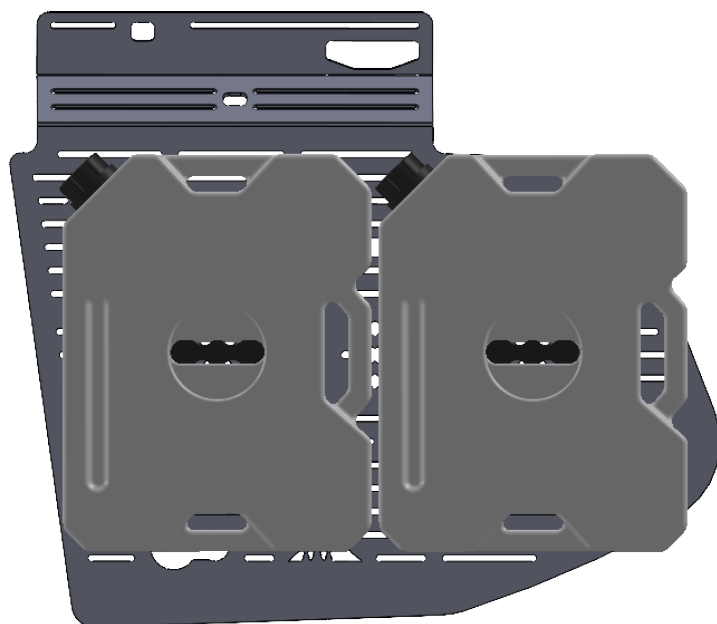
## FORWARD

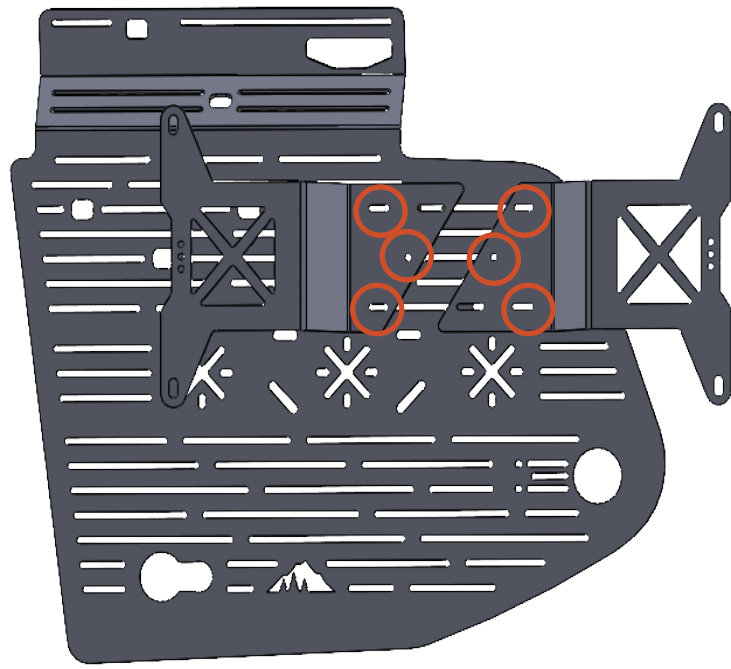
The GX470 window panel has been designed with a maximum safe load of **35 lbs**. It is the customers responsibility to use discretion when attaching accessories to the window panel so that no damage occurs. **Hardware for rotopax and traction board mounts should inserted through slots from the glass side of the window panel.** When the panel is loaded it will deflect, and hardware that is too close to the window will cause damage.

# ACCESSORIES

It is recommended that all accessories are installed prior to installing the window panel on the rack. Access to the backside of the window panel is limited once it is installed on the rack. **Rotopax and traction board mounting hardware should be installed so that the bolts are inserted from the inside of the window panel and protrude away from the window.** Factory rotopax mounts must be removed from baseplate, as shown below, before attaching to window panels. Accessories and hardware shown below are not included. Instructions for installing common accessories on the window panel can be found on the [Sherpa EC Website](#).







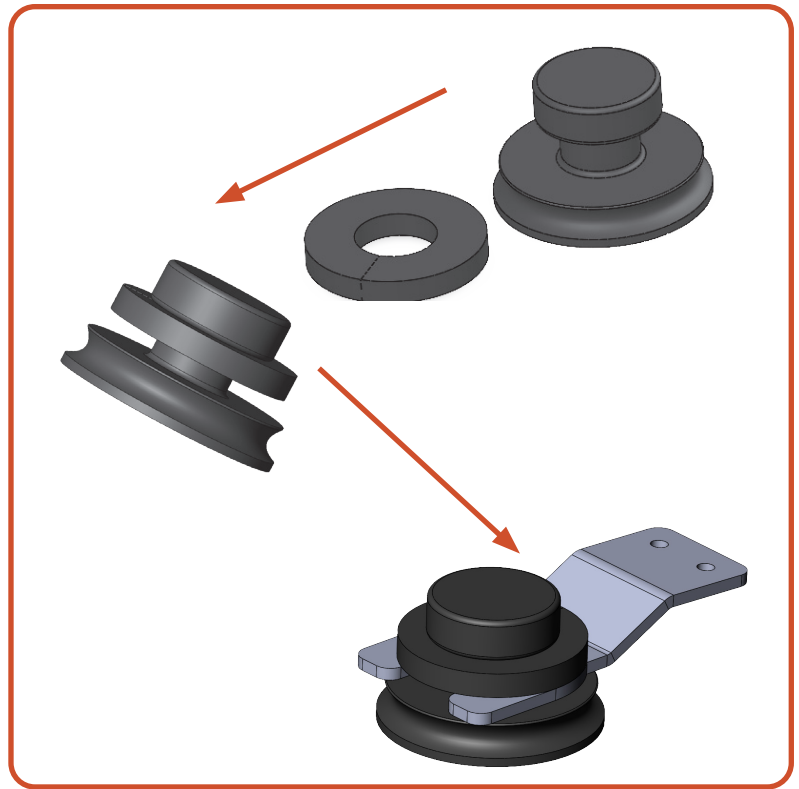
MAXTRAX LITE TRACTION BOARD MOUNTING LOCATIONS. **MAXTRAX MKII/  
EXTREME TRACTION BOARD DOES NOT FIT ON GX470 WINDOW PANEL**

## INSTALL 01

Required Components:

- 1 Suction Cup
- 1 Rubber Spacer
- 1 Suction Cup Standoff

Split the ends of the rubber spacer and wrap it around the neck of the suction cup. Insert the neck of the suction cup into the suction cup standoff with the rubber spacer above the standoff.

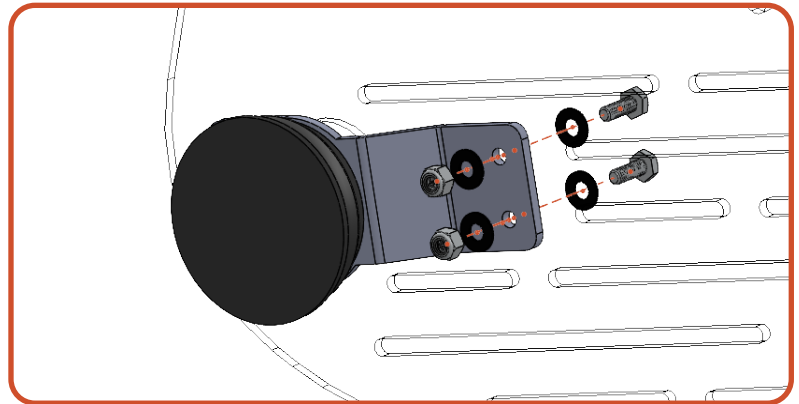
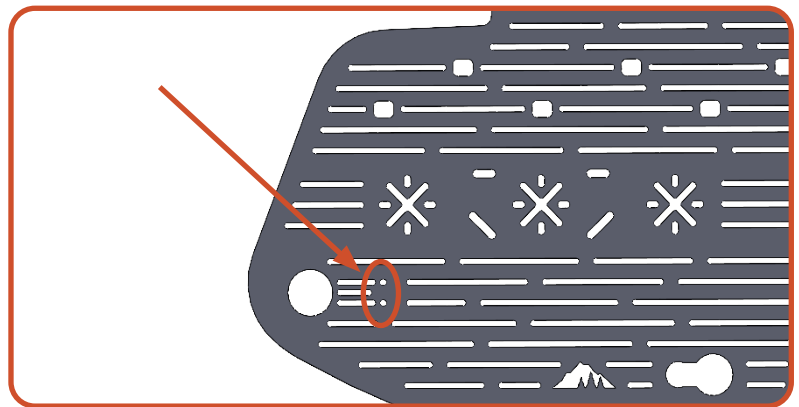


## INSTALL 02

Required Components:

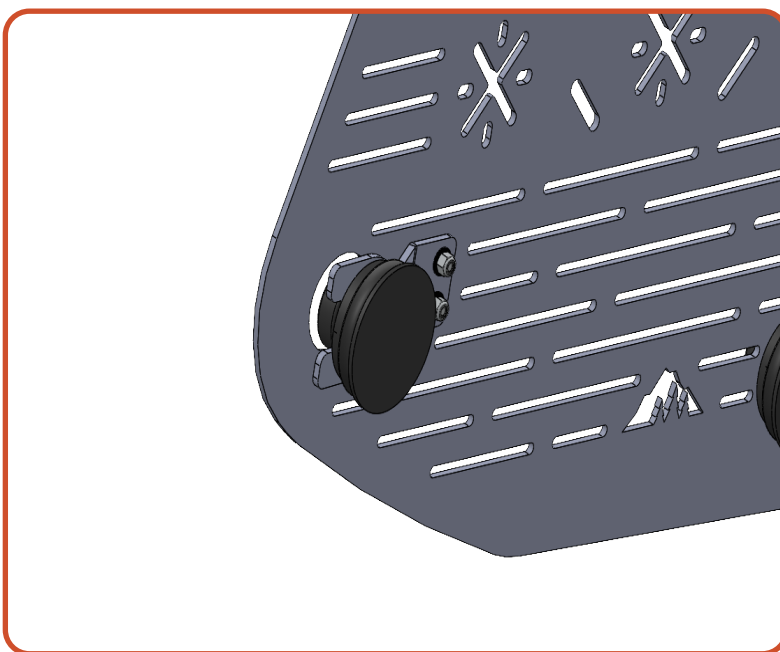
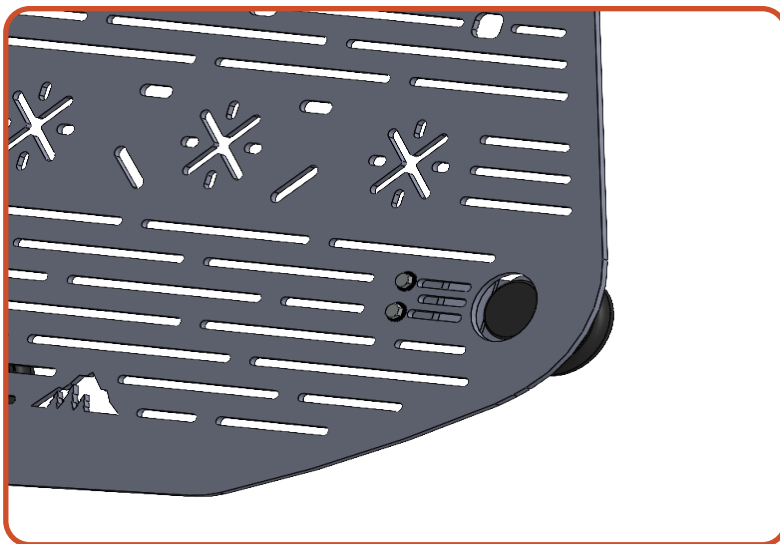
- 2 1/4-20 x 3/4" Hex Bolts
- 2 Nylock nuts
- 4 1/4" Flat Washers

Using the two short slots next to the Sherpa mountain cutout, fasten the suction cup standoff to the backside of the window panel. The suction cup should be centered in the large hole of the window panel. The standoff can be moved left or right and into adjacent slots to increase or decrease the pressure of the suction cup on the window.



## INSTALL 03

The images to the right show the front and back view of the suction cup standoff assembly on the window panel.

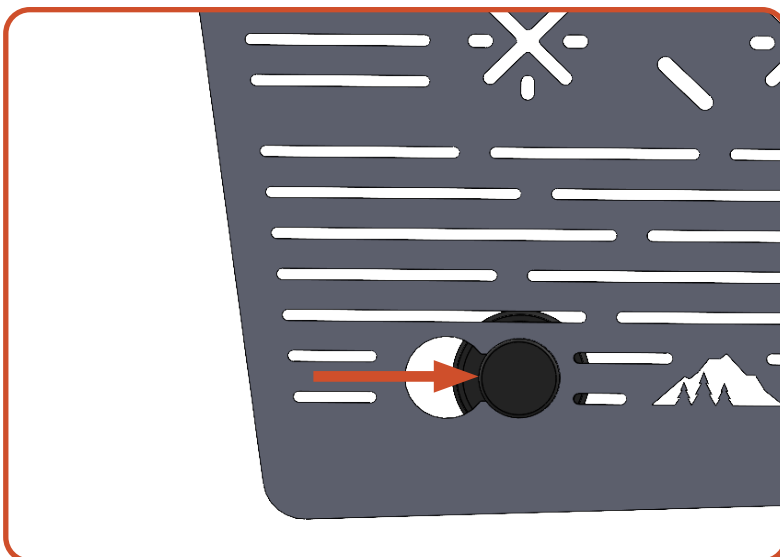


## INSTALL 04

Required Components:

- 1 Suction Cup
- 1 Rubber Spacer

Place the remaining rubber spacer on the remaining suction cup. Insert the suction cup through the back side of the window panel. Slide suction cup into the slot so that it locks into place.

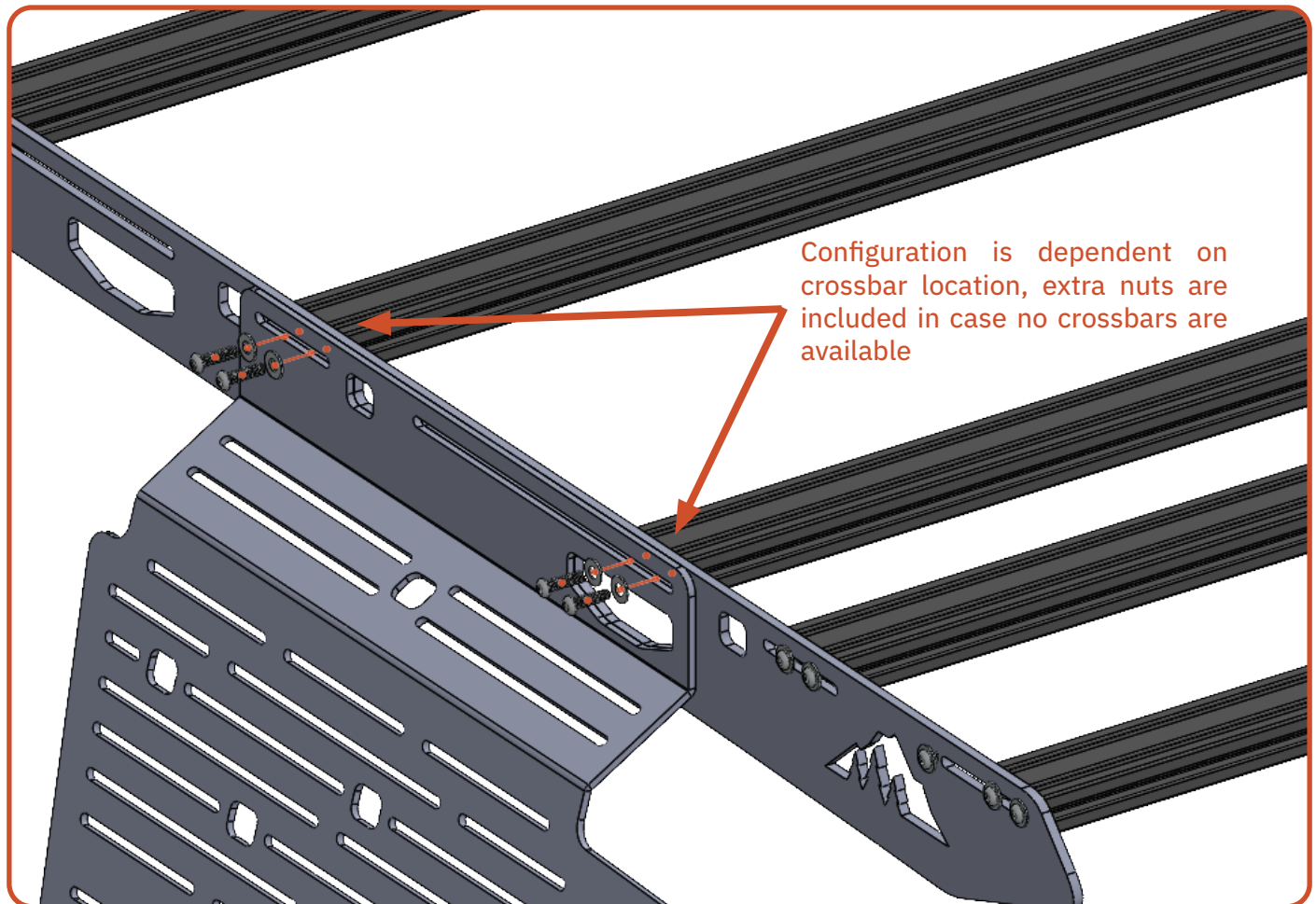
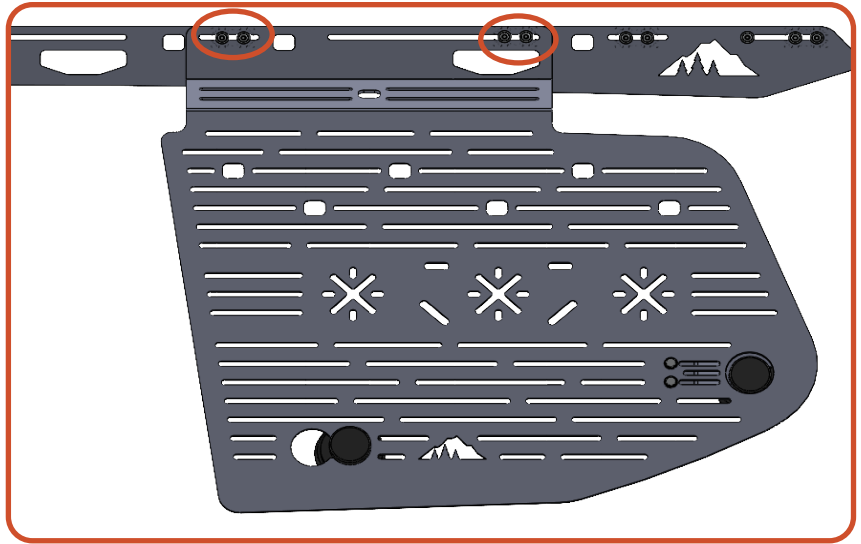


## INSTALL 05

Required Components:

- 4 1/4"-20 x 1" Socket Buttons (4 from rack)
- 4 1/4"-20 Nylock Nuts
- 8 1/4" Flat Washers

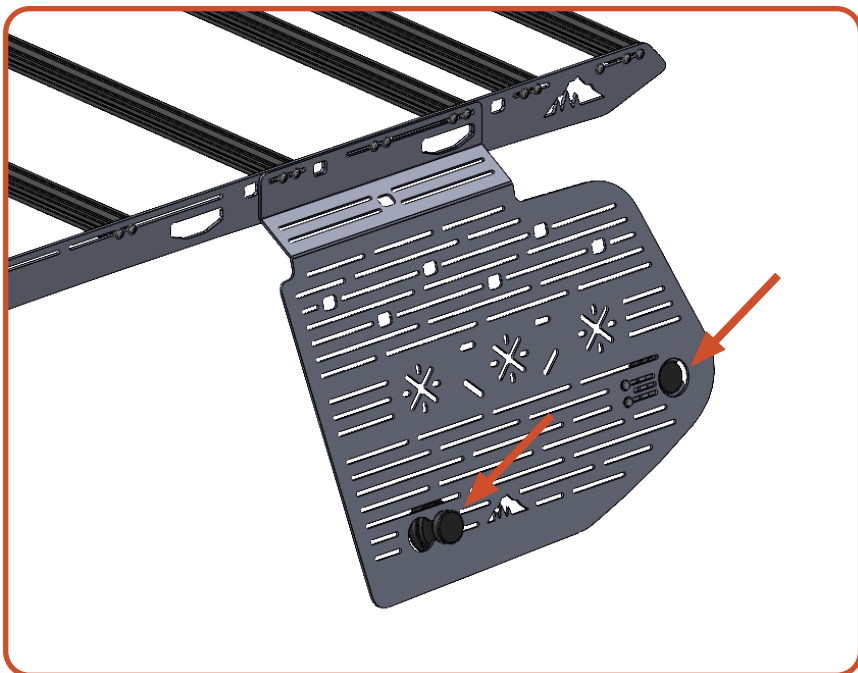
Ensure the window is clean. Align the window panel handle with the rear mount, crossbar, and tie down points on the sideplate of the roof rack (shown on the right). The **rear crossbar** will always be used to mount the window panel (shown below), but the front of the window panel may be attached through the sideplate to a crossbar and/or secured with nylock nuts. This is dependent on where the crossbars are located. If there is no cross bar available for the front of the window panel, there is enough hardware provided to mount the window panel

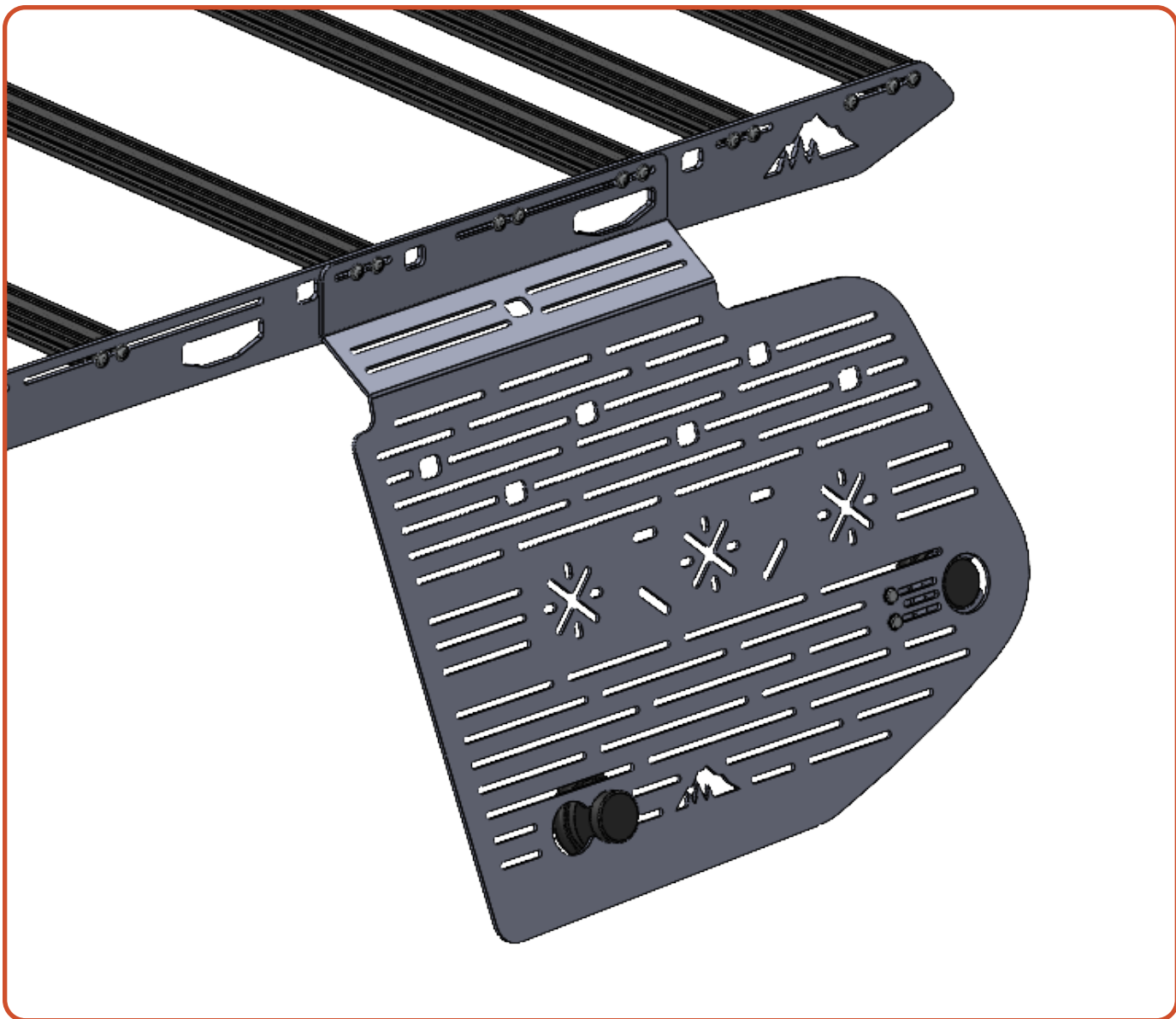




## INSTALL 06

Ensure window is still clean. Apply pressure to the suction cups to seal and secure them to the window.





NOW GET OUT THERE AND  
**EXPLORE.**

**WELCOME TO THE SHERPA FAMILY!**  
MAKE SURE TO FOLLOW US ON YOUR SOCIALS AND TAG US IN YOUR ADVENTURES.

All products built and designed by Sherpa Equipment Company are intended for off-road use and should be assembled, installed, and used according to Sherpa Equipment Company's recommendations. Sherpa Equipment Company's products should be used safely with good judgment towards others and surroundings.

By installing Sherpa Equipment Company's products on your vehicle you assume all liability. Sherpa Equipment Company will not be held liable for damages or loss associated with the installation or use of its products. It is recommended that you inspect your roof rack within the first 100 miles of installation and every 500 miles after.