



**SHERPA**  
PREMIUM RACK SYSTEMS

# **1G SEQUOIA WINDOW PANEL**

## INSTALL GUIDE

# HARDWARE CHECKLIST

**1**

WINDOW PANEL  
(DRIVER OR  
PASSNGER)

**6**

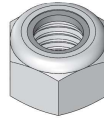
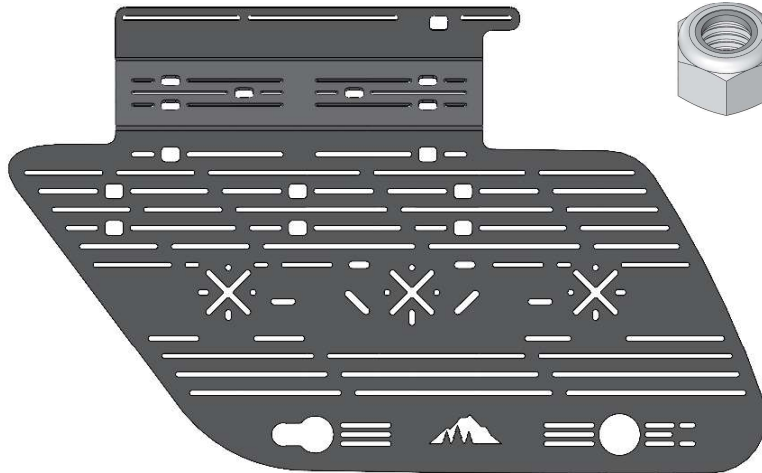
1/4"-20  
NYLOCK NUT

**6**

1/4"-20 X 1"  
SOCKET BUTTON

**12**

1/4" WASHER



**2**

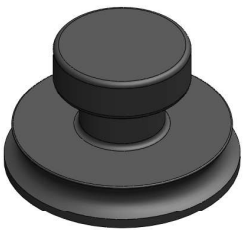
SUCTION CUPS

**2**

RUBBER SPACERS

**1**

SUCTION CUP  
STANDOFF

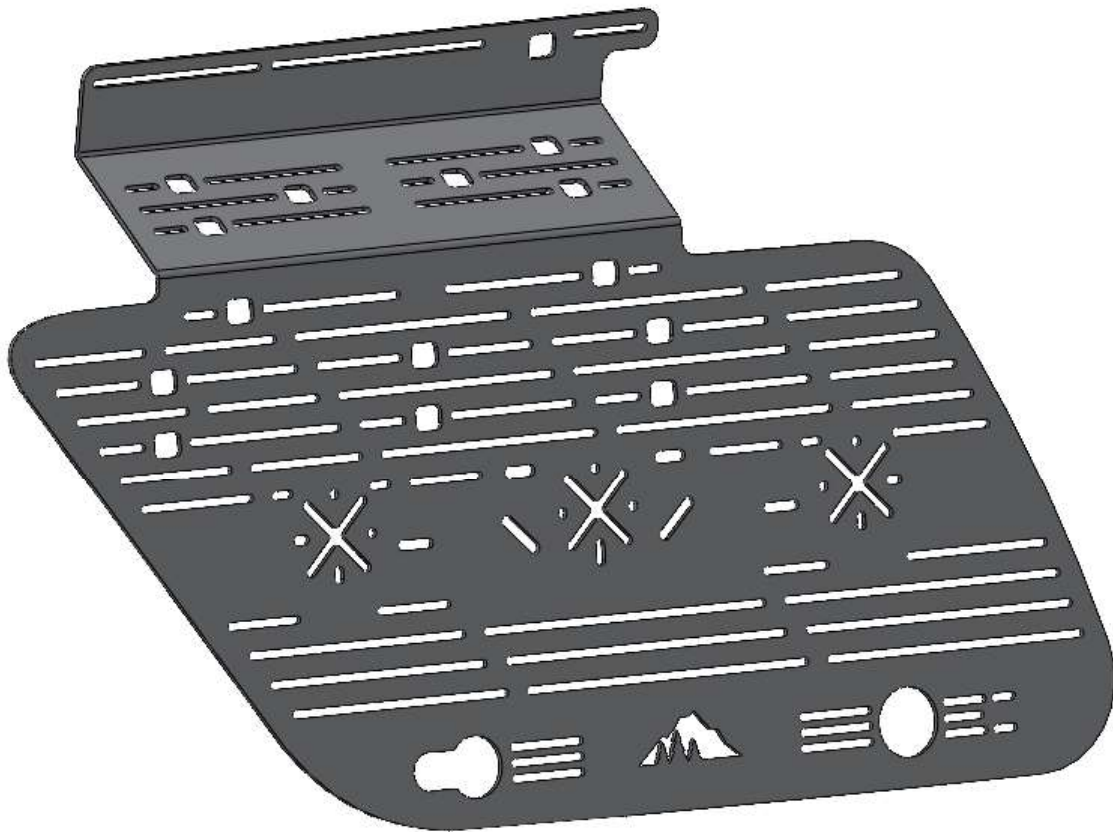


## BEFORE YOU START

Installing a window panel can be difficult alone. Getting another person to lend a hand on the install can make the process much easier. The process outlined in these instructions is what Sherpa has found to be the most consistent and direct method for installation.

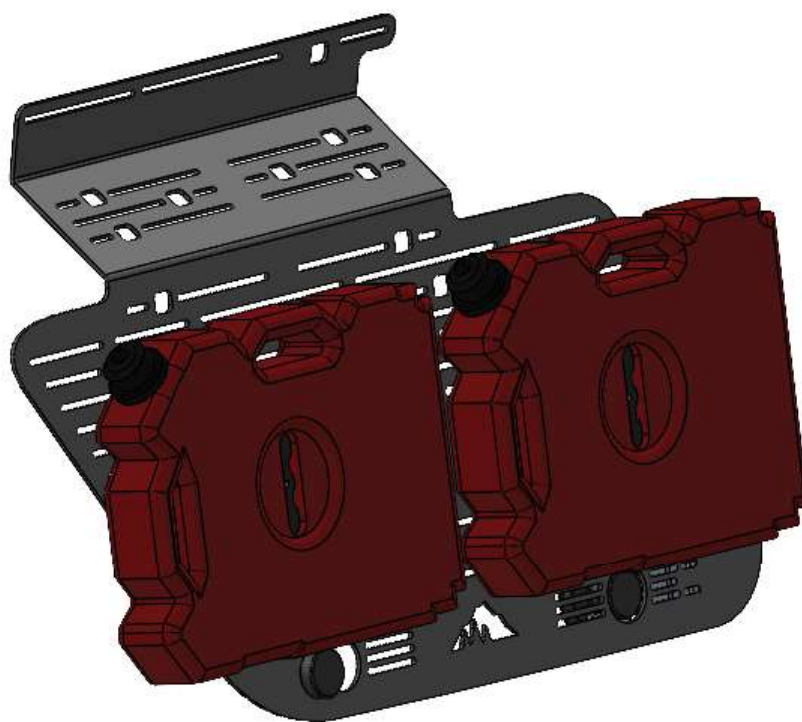
## FORWARD

The 1st Gen Sequoia Window Panel has been designed with a maximum safe load of **35 lbs**. It is the customers responsibility to use discretion when attaching accessories to the window panel so that no damage occurs. Hardware being used should not protrude close to the window. When the panel is loaded it will deflect, and hardware that is too long may contact the window.



## ACCESSORIES

It is recommended that all accessories are installed prior to installing the window panel on the rack. Access to the backside of the window panel is limited when it is installed on the rack. If possible, hardware should be installed so that the nut and bolt protrude away from the vehicle. Instructions for installing common accessories on the window panel can be found on the [Sherpa EC Website](#).

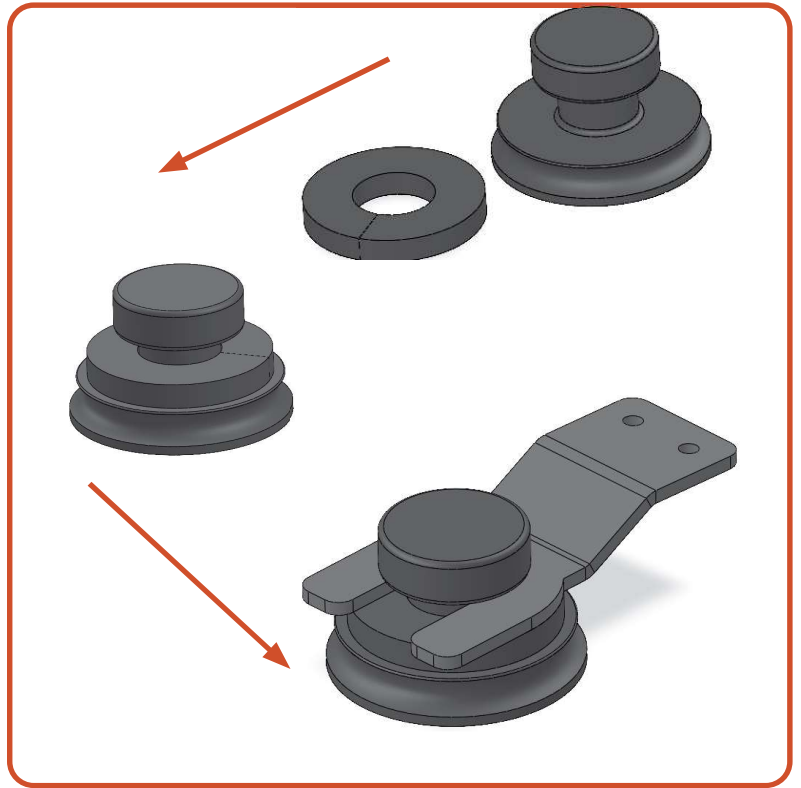


## INSTALL 01

Required Components:

- 1 Suction Cup
- 2 Rubber Spacer
- 1 Suction Cup Standoff

Split the ends of the rubber spacer and wrap it around the neck of the suction cup. Insert the neck of the suction cup into the suction cup standoff with the rubber space below the standoff.

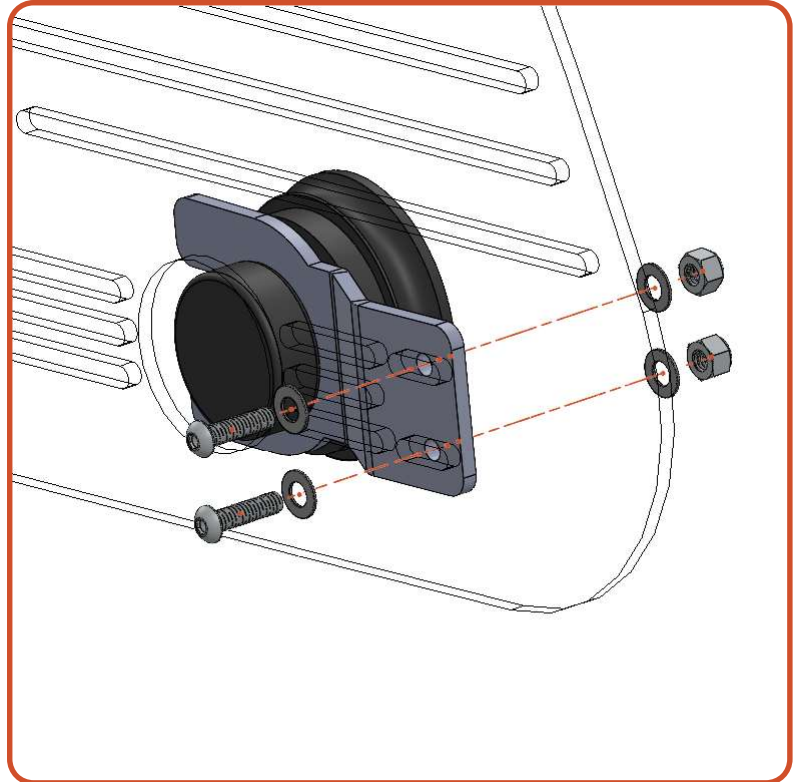


## INSTALL 02

Required Components:

- 2 1/4-20 x 1" SB Screws
- 2 Nylock nuts
- 4 1/4" Flat Washers

Using the two short slots to the left of the Sherpa mountain cutout, fasten the suction cup standoff to the backside of the window panel. The suction cup should be centered in the large hole of the window panel. The standoff can be moved left and right to increase or decrease the pressure of the suction cup on the window.



## INSTALL 03

The images below show the front and back view of the suction cup assembly on the window panel.

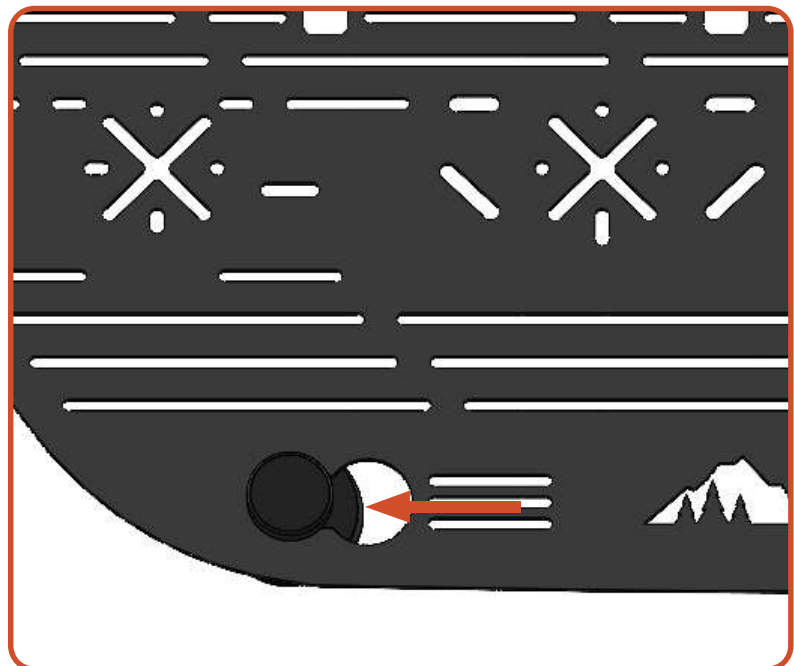


## INSTALL 04

Required Components:

- 1 Suction Cup
- 1 Rubber Spacer

Place the remaining rubber spacer on the remaining suction cup. Insert the suction cup through the back side of the window panel keeping the rubber spacer on the backside of the window panel. The handle of the suction cup should be the only part protruding through the front of the window panel. Slide the neck of the panel in the slot so that it locks into place.



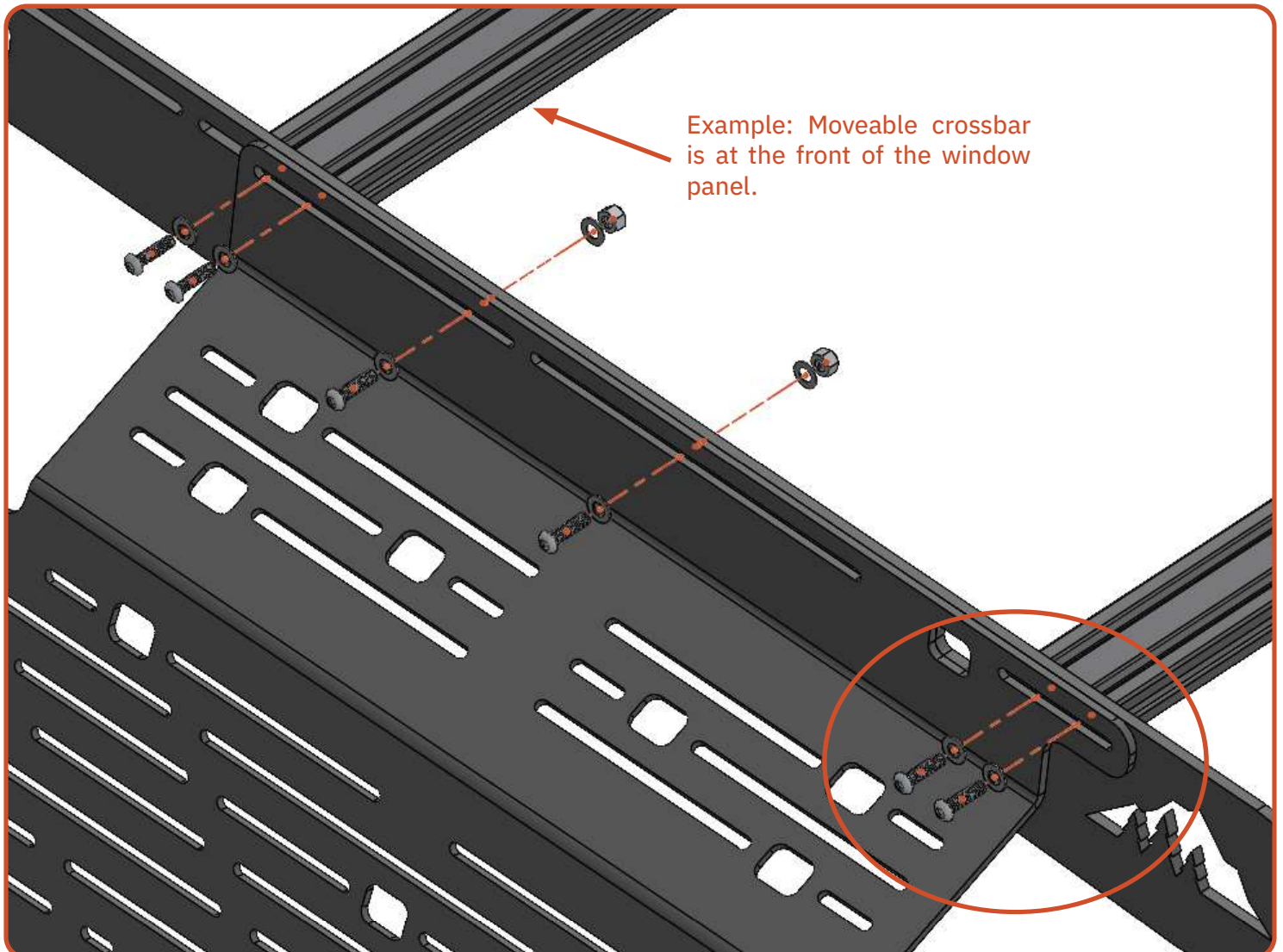
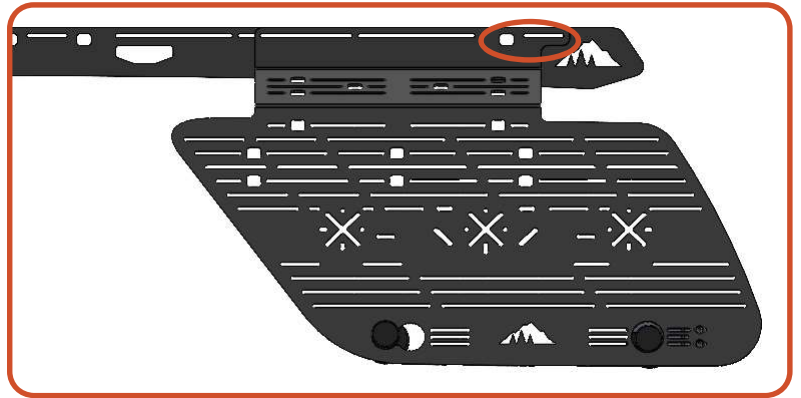


## INSTALL 05

Required Components:

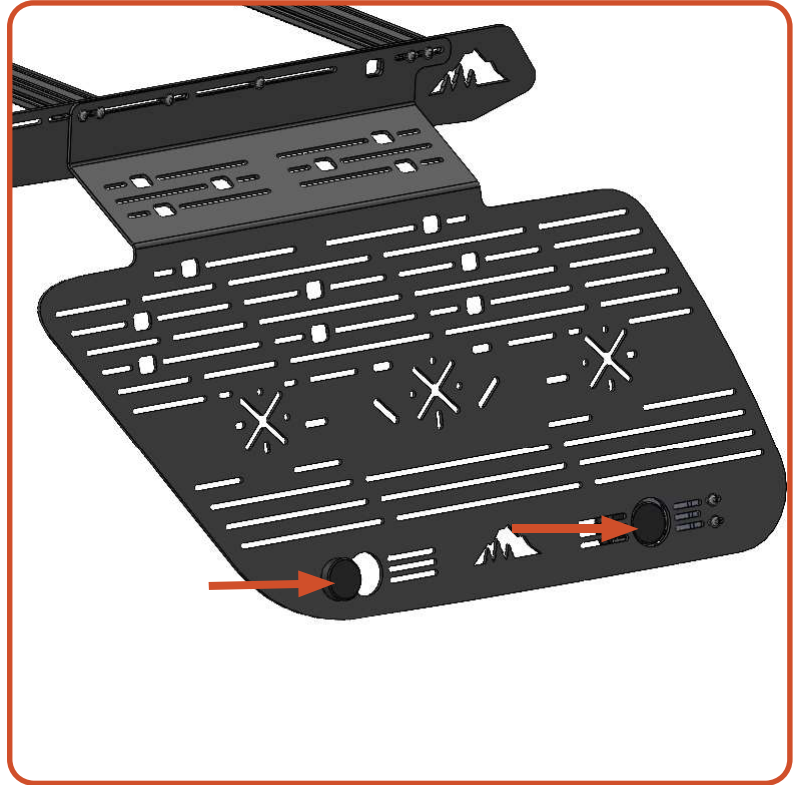
- 6 1/4"-20 x 1" Socket Buttons (2 or 4 from rack)
- 2 or 4 1/4"-20 Nylock Nuts
- 8 or 10 1/4" Flat Washers

Align the window panel handle with the rear mount and tie down point on the sideplate of the roof rack (shown on the right). The **rear cross bar** will always be used to mount the window panel (shown below), but the center and front bolts may be mounted to a crossbar or with nylock nuts. This is dependent on where the crossbars are located. If there are no cross bars available for the two rear mounts, there is enough hardware to mount the window panel with just bolts, washers and nuts.

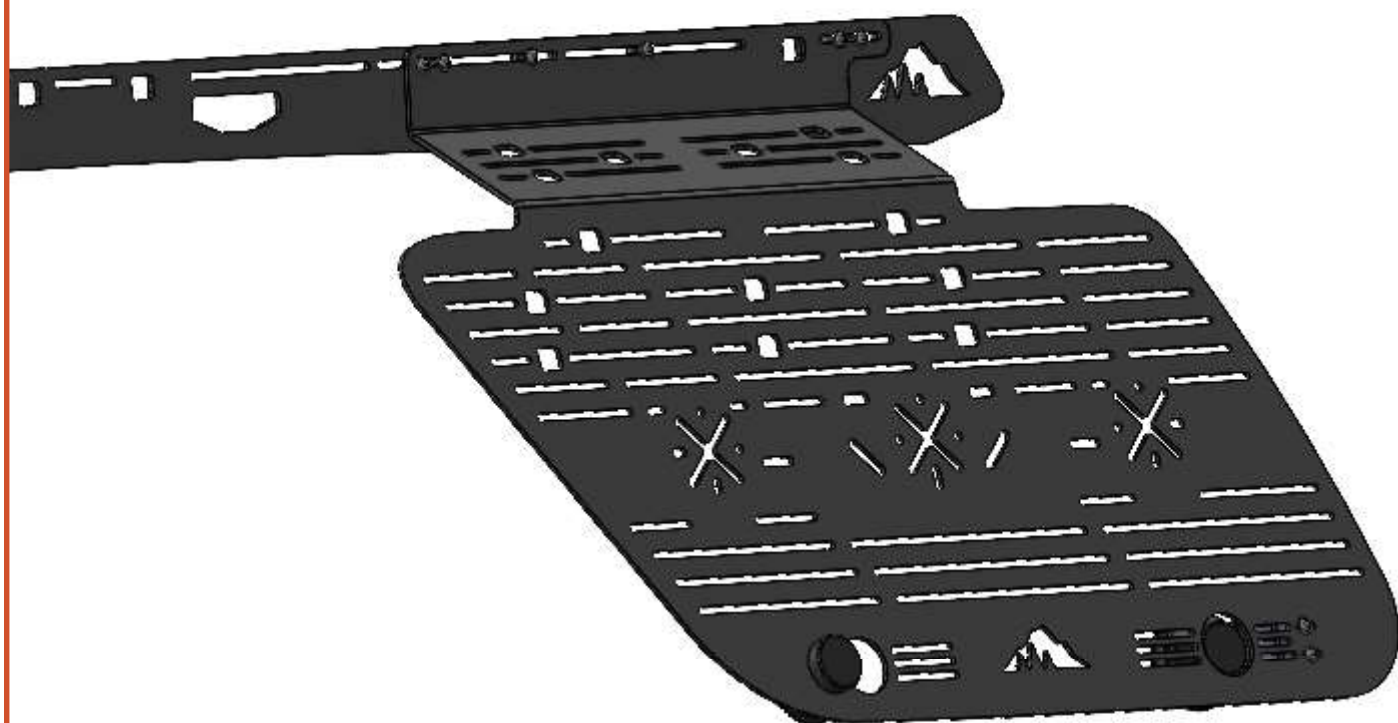


## INSTALL 06

Depress the suction cups to seal them and attach them to the window. If the suction cups are not sealing, clean the window, and ensure there is no debris between the suction cups and the window.







NOW GET OUT THERE AND  
**EXPLORE.**

**WELCOME TO THE SHERPA FAMILY!**  
MAKE SURE TO FOLLOW US ON YOUR SOCIALS AND TAG US IN YOUR ADVENTURES.

All products built and designed by Sherpa Equipment Company are intended for off-road use and should be assembled, installed, and used according to Sherpa Equipment Company's recommendations. Sherpa Equipment Company's products should be used safely with good judgment towards others and surroundings.

By installing Sherpa Equipment Company's products on your vehicle you assume all liability. Sherpa Equipment Company will not be held liable for damages or loss associated with the installation or use of its products. It is recommended that you inspect your roof rack within the first 100 miles of installation and every 500 miles after.