



INSTALLATION GUIDE

SPRINTER VAN L-TRACK KIT - 144"

SP0312B + SP0312S



TOOLS REQUIRED (NOT INCLUDED)

- + SCREWDRIVER
- + IMPACT DRIVER

INSTALL INFO

TIME TO INSTALL THIS PRODUCT: 1-2 HOURS

Additional help is suggested for a few of the install steps.

BEFORE YOU START

Please inspect the product and packaging upon delivery to ensure there are no issues and that all parts and hardware are accounted for.

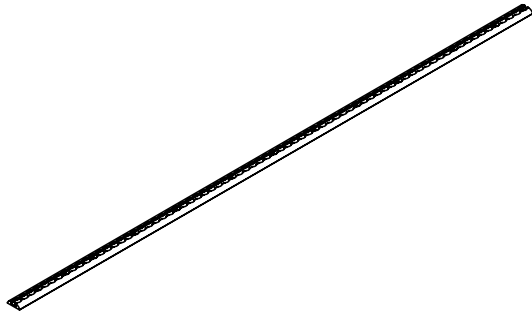
Contact us ASAP if anything is missing at:
support@flatlinevanco.com

BEFORE YOU START

All Flatline Van Co products must be properly assembled and secured before attaching to your vehicle. Improper attachment could result in an automobile accident, and could cause serious bodily injury or death to you or to others involved. You are responsible for assembling and securing Flatline Van Co products to your vehicle, checking the mounting points and attachments prior to use, and regularly inspecting the products for wear and or damage. We always recommend you use a professional to install any aftermarket accessories to your vehicle. If you have no mechanical experience and are not thoroughly familiar with the installation procedures, you must have the product installed by a professional installer or other qualified persons. The responsibility is yours and must be taken seriously for everyone's safety.

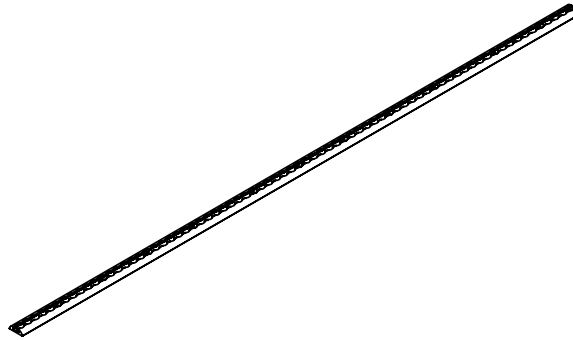


PACKAGE CONTENTS



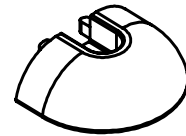
SPRINTER 144 BED REAR
L-TRACK

QTY: 2



SPRINTER 144 BED FRONT
L-TRACK

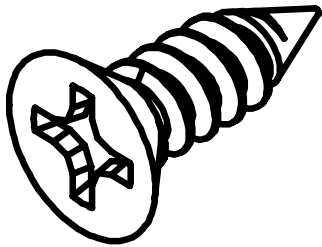
QTY: 2



SURFACE MOUNT L
TRACK END CAP

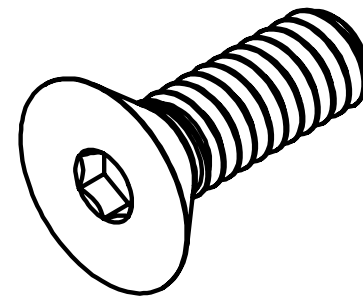
QTY: 8

HARDWARE



**#8 X 0.5 FLAT HEAD PHILLIPS DRIVE
SCREW**

QTY: 8



1/4-20 X 0.75 FLAT HEAD HEX DRIVE SCREW

QTY: 50

INSTALL

STEP | 01 LAYOUT AND INSTALL PREP

1.1 Identify Mounting Locations: Find the pre-threaded holes highlighted blue in FIG 1 and 2 that you'll use to install your L-Track Kit to FVC Sprinter Bed Brackets.

NOTE - This install will require you to drill clearance holes through your wall panels. Remove them to access your **Bed Brackets**.

NOTE - This product is **exclusively** made for **Flatline Van Company Bed Brackets**.

TOOLS REQUIRED FOR THIS STEP:

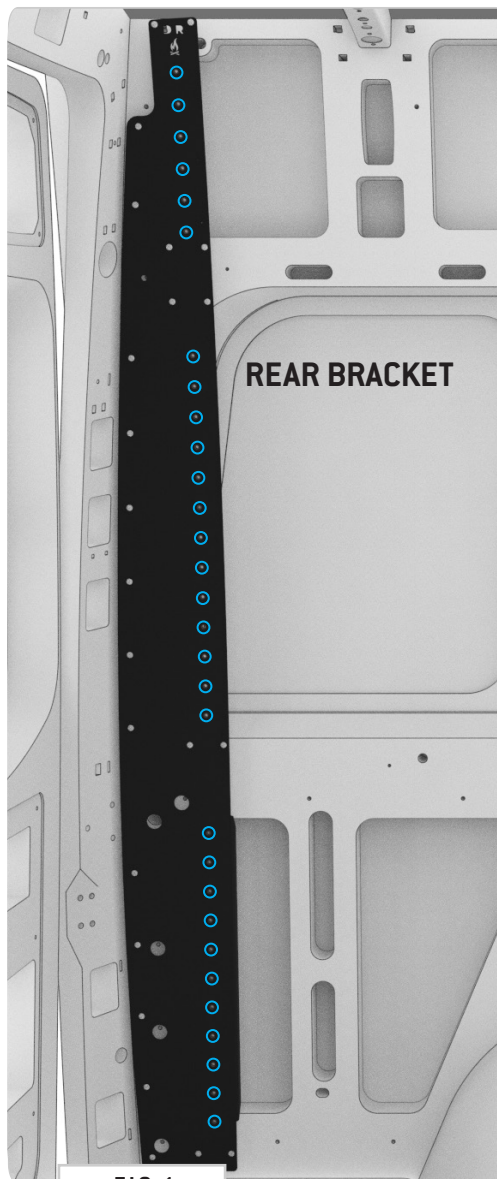


FIG 1

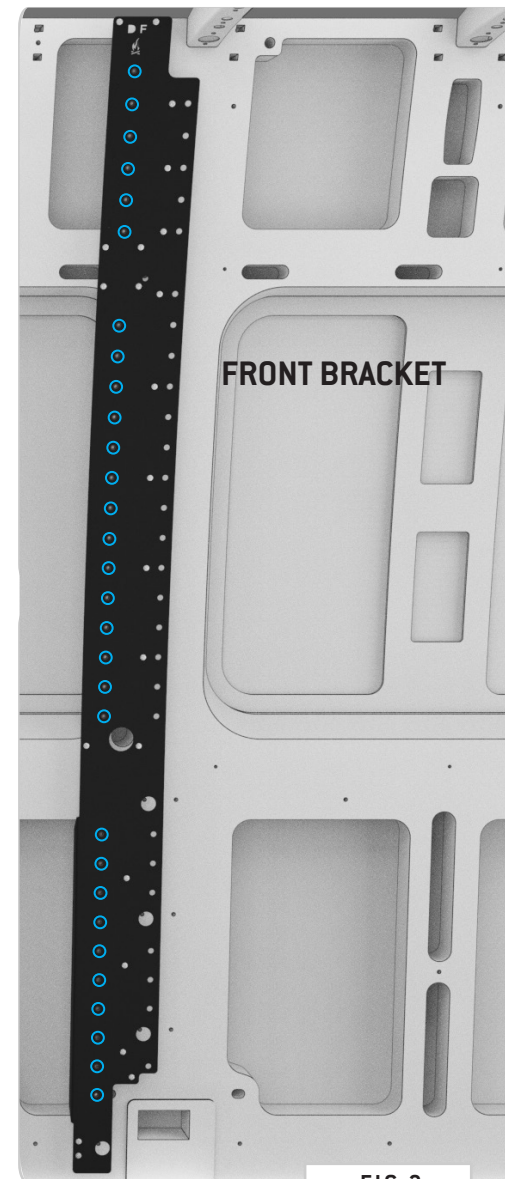


FIG 2

TOOLS REQUIRED FOR THIS STEP:

STEP | 02 L-TRACK INSTALL

2.1 Identify L-Track Extrusions: See FIG 3 and 4 for relevant dimensions for determining which **L-Tracks** are spaced for the **Front and Rear Bed Brackets**.

NOTE - For install with **Wall Panels**, measure and determine the location of the bottom hole of the bed bracket and transfer the mark to the corresponding location along your **Wall Panel**. Align the **L-Track** with this mark and use it to mark all other holes. Drill the holes slightly oversized for easier alignment and test fit to ensure they match the **Bed Bracket's** threaded holes. Install the **Wall Panels** back on the van before proceeding to the next step.

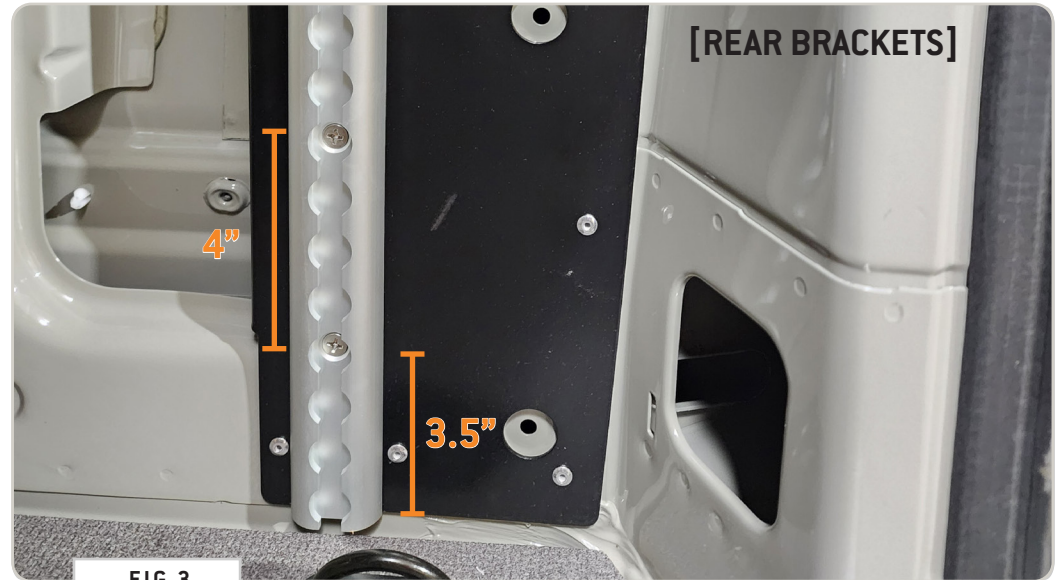
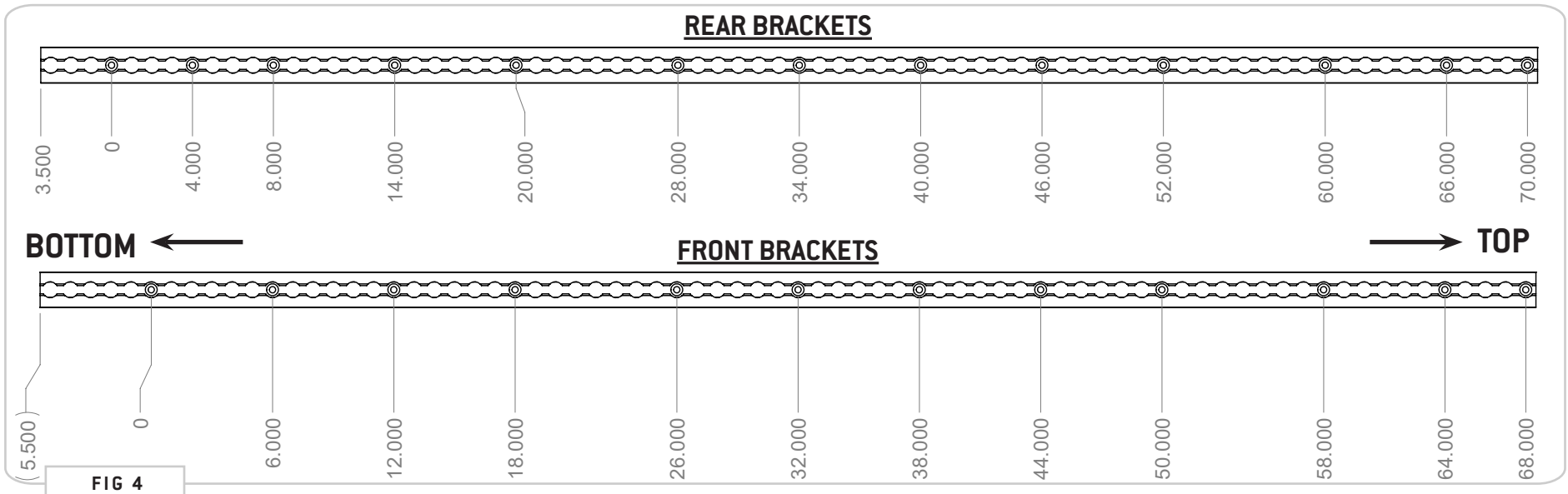


FIG 3



TOOLS REQUIRED FOR THIS STEP:

STEP | 02 L-TRACK INSTALL

2.2 Position L-Track to Bracket: Position the appropriate L-Track to your **Bed Bracket** and flex it to match the contour of the van's wall.



FIG 5



FIG 6

TOOLS REQUIRED FOR THIS STEP: + SCREWDRIVER

STEP | 02 L-TRACK INSTALL

2.3 Secure L-Track to Bracket: Starting with the **Bottom-Most** mounting hole, secure the **L-Track** in place using **1/4-20 X 0.75 Flat Head Hex Drive Screws**.



FIG 7



FIG 8

TOOLS REQUIRED FOR THIS STEP: + SCREWDRIVER
+ IMPACT DRIVER

STEP | 02 L-TRACK INSTALL

2.4 Attach End Caps (OPTIONAL): If your application necessitates trimming the **L-Track Extrusion**, we've supplied **End Caps** to use at your discretion. Simply snap it into place in the orientation shown in **FIG 9** and finish by driving a **#8 Screw** into your wall panel (if applicable).

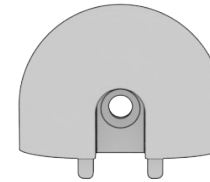


FIG 9

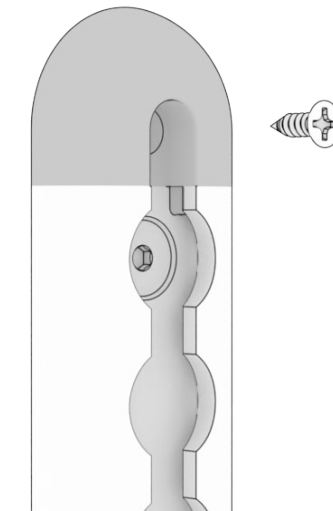
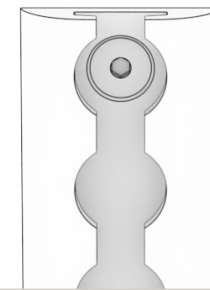


FIG 10

GET OUT AND EXPLORE!

+ LEAVE US A REVIEW

Happy with your new FVC product? We would love to hear (and see) from you! Head to the product page and click "Leave Review." Add a short review and upload a few photos to be showcased on the product page.

+ SHARE YOUR PICS

We love seeing how our customers use their FVC products and following along with your adventures. Tag us in your photos with: @flatlinevanco or send them to us via email. We love posting customer pictures in our feed!

+ NEED ANY HELP?

If you are having any issues with your product, please reach out, and we will make it right. FVC is a company of van and outdoor enthusiasts that design and use our own products, so we want you to be as stoked on your new parts as we are!



@FLATLINEVANCO



INSTALLATION GUIDE

SPRINTER VAN L-TRACK KIT - 170"

SP0313B + SP0313S



TOOLS REQUIRED (NOT INCLUDED)

- + SCREWDRIVER
- + IMPACT DRIVER

INSTALL INFO

TIME TO INSTALL THIS PRODUCT: 1-2 HOURS

Additional help is suggested for a few of the install steps.

BEFORE YOU START

Please inspect the product and packaging upon delivery to ensure there are no issues and that all parts and hardware are accounted for.

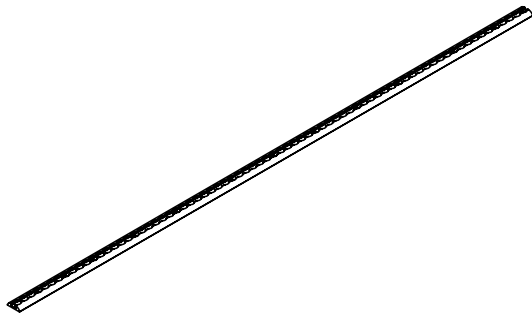
Contact us ASAP if anything is missing at:
support@flatlinevanco.com

BEFORE YOU START

All Flatline Van Co products must be properly assembled and secured before attaching to your vehicle. Improper attachment could result in an automobile accident, and could cause serious bodily injury or death to you or to others involved. You are responsible for assembling and securing Flatline Van Co products to your vehicle, checking the mounting points and attachments prior to use, and regularly inspecting the products for wear and or damage. We always recommend you use a professional to install any aftermarket accessories to your vehicle. If you have no mechanical experience and are not thoroughly familiar with the installation procedures, you must have the product installed by a professional installer or other qualified persons. The responsibility is yours and must be taken seriously for everyone's safety.

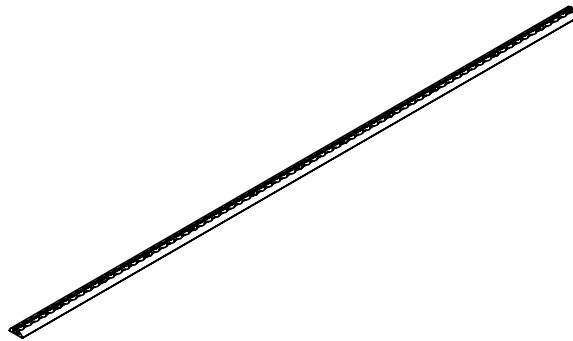


PACKAGE CONTENTS



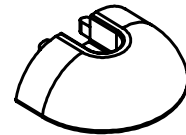
SPRINTER 170 BED REAR
L-TRACK

QTY: 2



SPRINTER 170 BED FRONT
L-TRACK

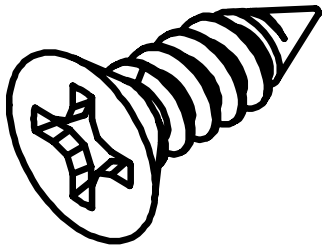
QTY: 2



SURFACE MOUNT L
TRACK END CAP

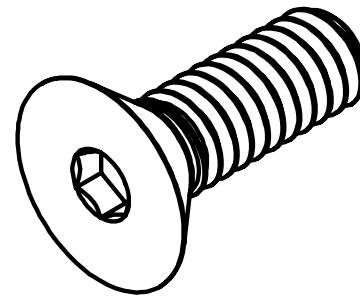
QTY: 8

HARDWARE



**#8 X 0.5 FLAT HEAD PHILLIPS DRIVE
SCREW**

QTY: 8



1/4-20 X 0.75 FLAT HEAD HEX DRIVE SCREW

QTY: 48

INSTALL

STEP | 01 LAYOUT AND INSTALL PREP

1.1 Identify Mounting Locations: Find the pre-threaded holes highlighted blue in FIG 1 and 2 that you'll use to install your L-Track Kit to FVC Sprinter Bed Brackets.

NOTE - This install will require you to drill clearance holes through your wall panels. Remove them to access your **Bed Brackets**.

NOTE - This product is **exclusively** made for **Flatline Van Company Bed Brackets**.

TOOLS REQUIRED FOR THIS STEP:

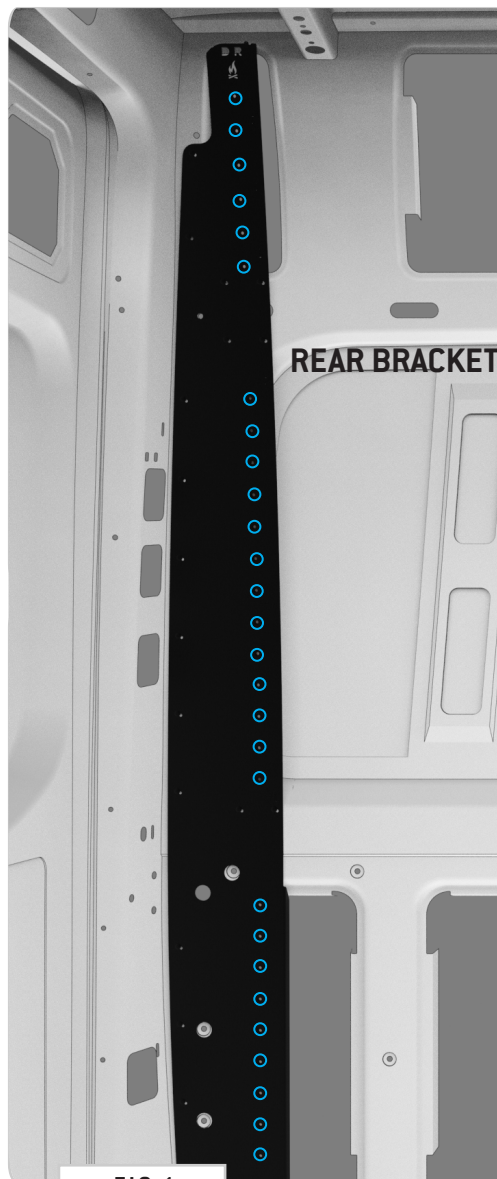


FIG 1

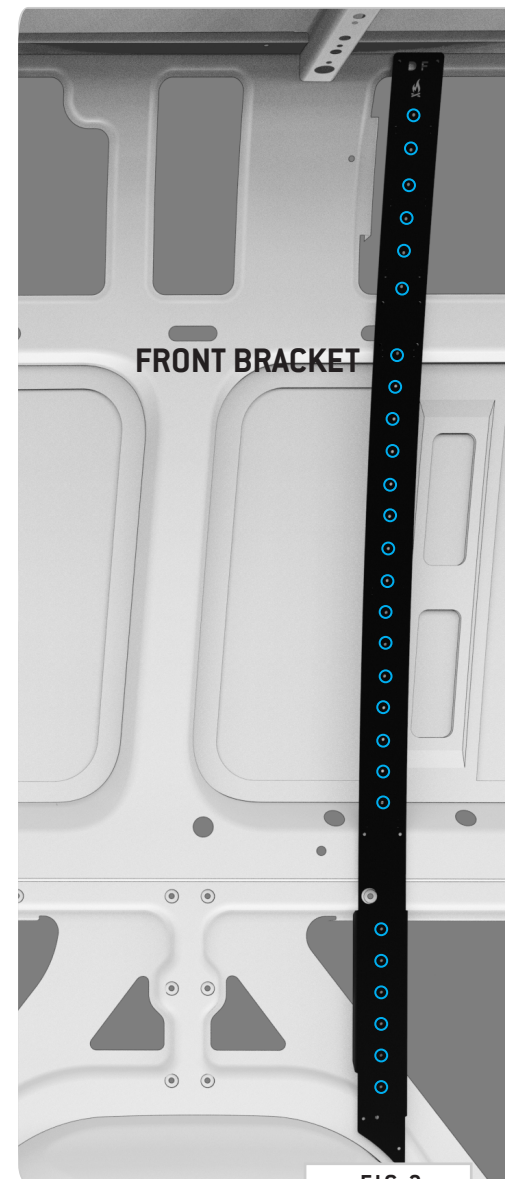


FIG 2

TOOLS REQUIRED FOR THIS STEP:

STEP | 02 L-TRACK INSTALL

2.1 Identify L-Track Extrusions: See FIG 3 and 4 for relevant dimensions for determining which **L-Tracks** are spaced for the **Front and Rear Bed Brackets**.

NOTE - For install with **Wall Panels**, measure and determine the location of the bottom hole of the bed bracket and transfer the mark to the corresponding location along your **Wall Panel**. Align the **L-Track** with this mark and use it to mark all other holes. Drill the holes slightly oversized for easier alignment and test fit to ensure they match the **Bed Bracket's** threaded holes. Install the **Wall Panels** back on the van before proceeding to the next step.

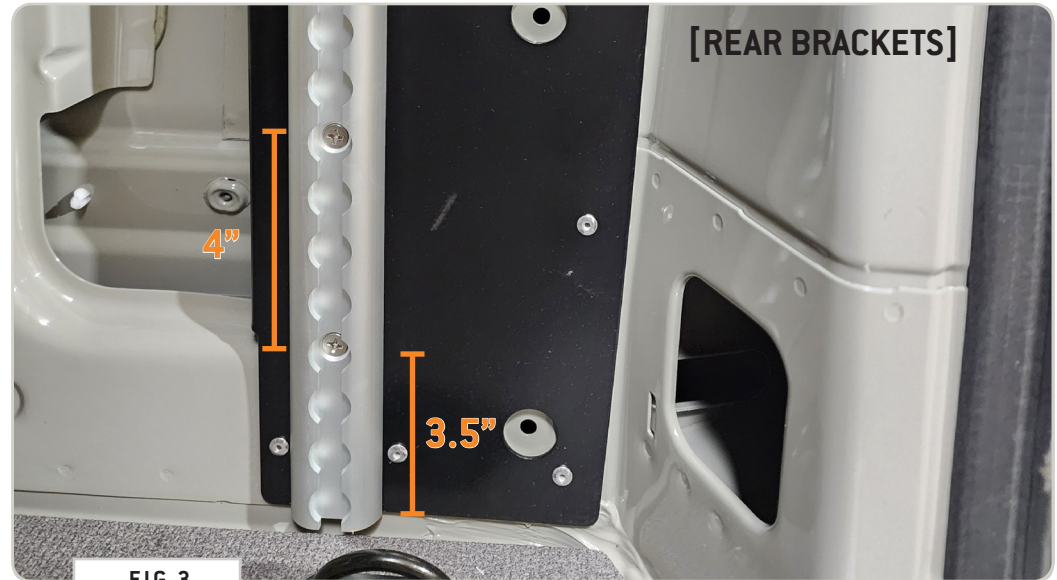


FIG 3

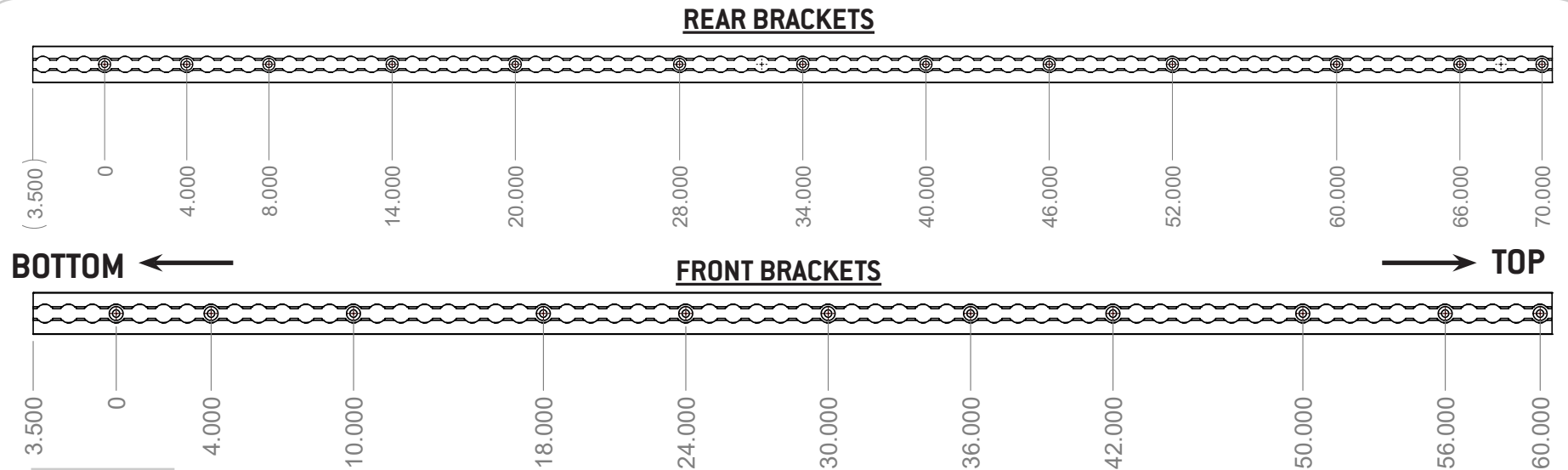


FIG 4

TOOLS REQUIRED FOR THIS STEP:

STEP | 02 L-TRACK INSTALL

2.2 Position L-Track to Bracket: Position the appropriate L-Track to your **Bed Bracket** and flex it to match the contour of the van's wall.



FIG 5



FIG 6

TOOLS REQUIRED FOR THIS STEP: + SCREWDRIVER

STEP | 02 L-TRACK INSTALL

2.3 Secure L-Track to Bracket: Starting with the **Bottom-Most** mounting hole, secure the **L-Track** in place using **1/4-20 X 0.75 Flat Head Hex Drive Screws**.



FIG 7



FIG 8

TOOLS REQUIRED FOR THIS STEP: + SCREWDRIVER
+ IMPACT DRIVER

STEP | 02 L-TRACK INSTALL

2.4 Attach End Caps (OPTIONAL): If your application necessitates trimming the **L-Track Extrusion**, we've supplied **End Caps** to use at your discretion. Simply snap it into place in the orientation shown in **FIG 9** and finish by driving a **#8 Screw** into your wall panel (if applicable).

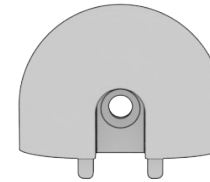


FIG 9

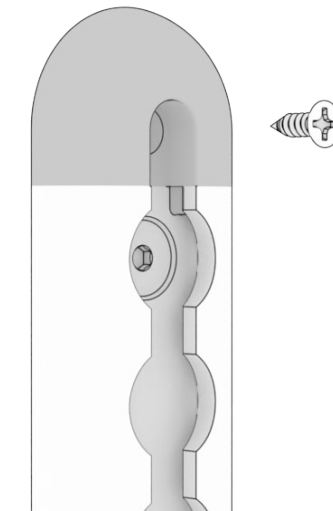
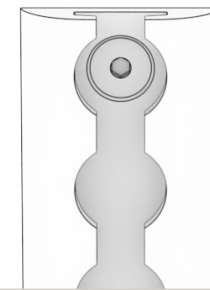


FIG 10

GET OUT AND EXPLORE!

+ LEAVE US A REVIEW

Happy with your new FVC product? We would love to hear (and see) from you! Head to the product page and click "Leave Review." Add a short review and upload a few photos to be showcased on the product page.

+ SHARE YOUR PICS

We love seeing how our customers use their FVC products and following along with your adventures. Tag us in your photos with: @flatlinevanco or send them to us via email. We love posting customer pictures in our feed!

+ NEED ANY HELP?

If you are having any issues with your product, please reach out, and we will make it right. FVC is a company of van and outdoor enthusiasts that design and use our own products, so we want you to be as stoked on your new parts as we are!



@FLATLINEVANCO