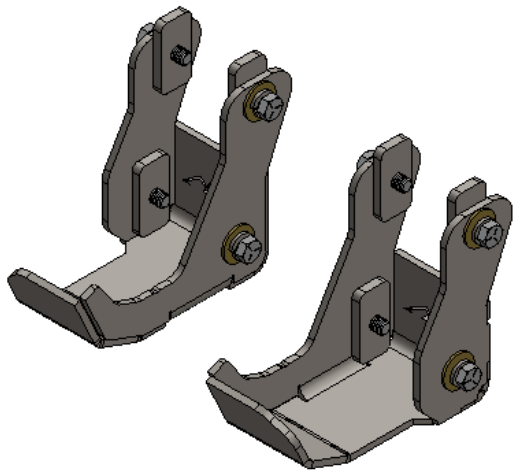


RCI 24+ Tacoma Shock Mount Skid Plate Installation Guide

BOM Table			
ITEM NO.	PART NUMBER	DESCRIPTION	QTY.
1	SM-00798	24 Taco Shock Mount Skid - Driver	1
2	SM-00798.	24 Taco Shock Mount Skid - Passenger	1
3	HW-00152	Toyota .375 Track Nut	8
4	HK-00131	24 TACO Shock Skid HK	1
4.1	HW-00029	3/8 SPLIT LOCK WASHER ZINC	8
4.2	HW-00026	3/8 USS FLAT WASHER THRU HARD	8
4.3	HW-00064	3/8-16 X 1-1/8 HEX CAP SCREW	8
5	BX-00052	12x6x4 Tacoma Hi-lift Mount	1



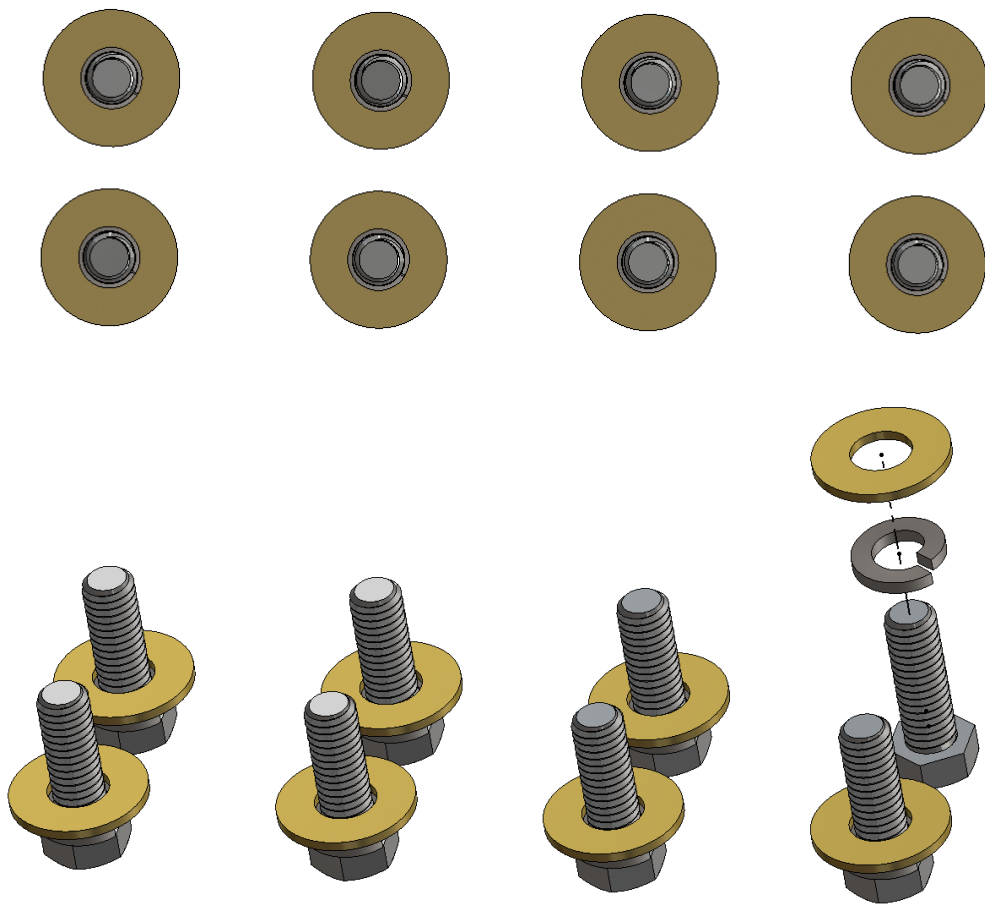
UNLESS OTHERWISE SPECIFIED:	PROPRIETARY AND CONFIDENTIAL	NAME	DATE
DIMENSIONS ARE IN INCHES TOLERANCES: FRACTIONAL ±0.010 ANGULAR: BEND ±0.5 TWO PLACE DECIMAL ±0.015 THREE PLACE DECIMAL ±0.010	THE INFORMATION CONTAINED IN THIS DRAWING IS THE SOLE PROPERTY OF RCI OFFROAD. ANY REPRODUCTION IN PART OR AS A WHOLE WITHOUT THE WRITTEN PERMIT OF RCI OFFROAD IS PROHIBITED.	DRAWN	KL
		Export Date	
		5/31/2024	
RCI OFFROAD			
TITLE: .188MS Taco Shock Skid - Ship Print			
Item Number			REV
FG-00478			1
DO NOT SCALE DRAWING		SCALE: 1:3	WEIGHT: SHEET 1 OF 8

Figure 1:BOM

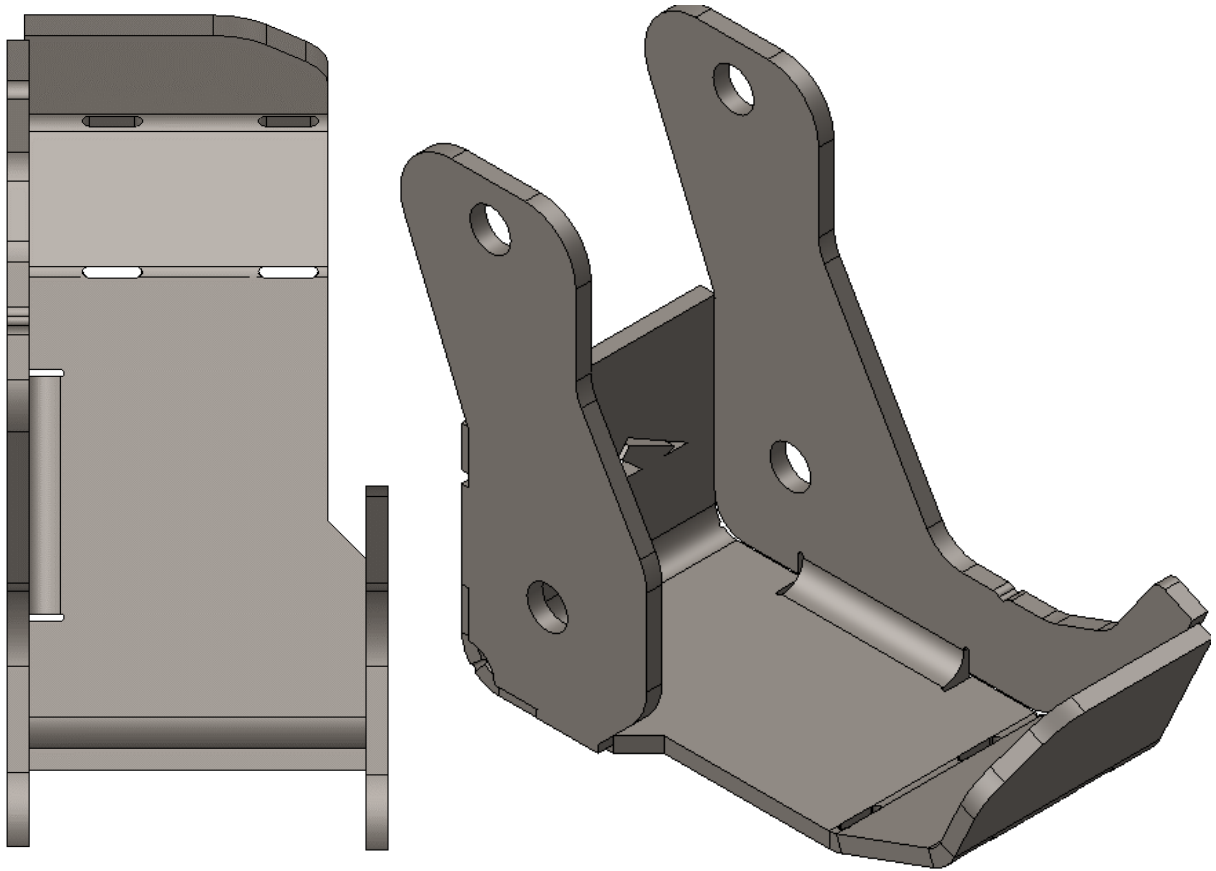
INSTALLATION STEPS:

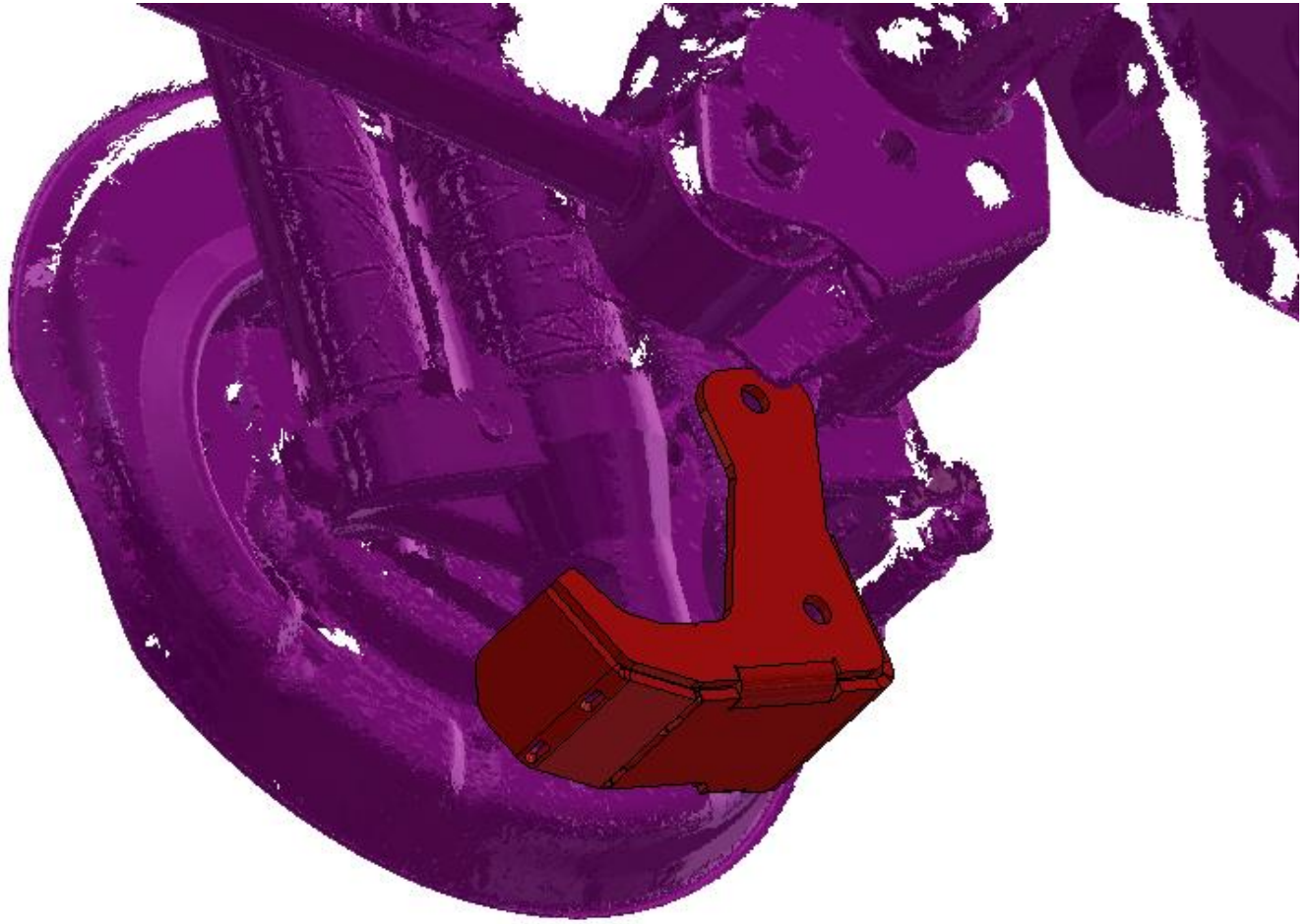
****Use hand tools, impact wrenches may cause damage if over torqued.**

1. Begin by unpacking and removing all components and hardware. Please verify that all hardware, components, and mounting components are present. Please reference your original order invoice and verify all items are accounted for.
 - a. Removing the wheels and tires from the rear axle will make the installation process significantly easier; however, it is not strictly necessary, and installation can be performed with the wheels and tires on the vehicle and the vehicle
2. Prepare 8 sets of hardware for installation by inserting the included 3/8" hex bolt through a split washer and a flat washer as shown.



3. Starting with the passenger side, slide the shock mount skid plate over the shock mount on the rear axle.
 - a. Use of a floor jack or similar tool may be helpful to get the skid plate seated correctly and to hold the skid plate in position while installing.
 - b. The shock mount skid plate is side-dependent. Ensure that the passenger side shock mount skid plate is being installed by selecting the skid plate with the shorter mounting flange on the right side as shown below.

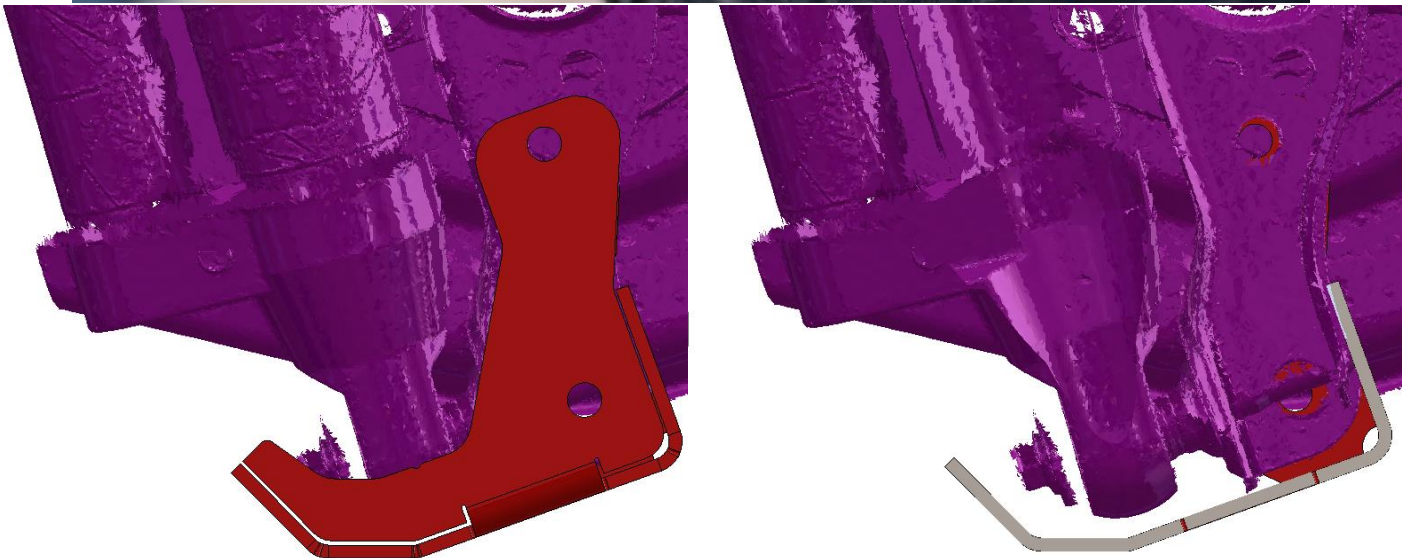




4. With one set of prepared hardware from step 2 in one hand, use the other hand to insert one of the included 3/8" tapped plates through the slot in the rear of the shock mount and align the threads with the holes in the side of the shock mount and the shock mount skid plate. Begin to thread the bolt and hardware into the threaded plate to loosely secure the shock mount skid plate to the vehicle shock mount.
5. Repeat the process performed in step 4 for the remaining three holes present on the sides of the passenger side shock mount skid plate.



6. With all hardware for the passenger side shock mount skid plate loosely installed, tighten the hardware with the shock mount skid plate held into alignment with the vehicle shock mount.
 - a. The rear flange of the shock mount skid plate should be held parallel and coincident with the lower section of the vehicle shock mount.
 - b. The shock mount skid plate should be pushed upwards so that it contacts the bottom of the vehicle shock mount.





7. Repeat steps 3 through 6 for the driver side of the vehicle.
8. Congratulations! You have successfully completed installation of the RCI Shock Mount Skid Plate package. Take a moment to admire your work and ensure all hardware is tightened.



Enjoy your new RCI protection!



Share your new install with us on social media!

We love seeing our products out in the wild!

www.rcimetalworks.com

sales@rcioffroad.com

970-797-3089

REV: 1 | 9/29/2022



Disclaimer: The products sold by RCI Metalworks are intended for off –road use only, should not be modified, and are for use only on the vehicle(s) specifically stated. RCI Metalworks makes no warranties express or implied, including of fitness for a particular purpose or merchantability. RCI Metalworks will not be liable for any damages arising out of the use or misuse of its products. It is the customers' responsibility to ensure the products are safely and properly attached to the vehicle, and all products should be installed by trained professionals. We strive to maintain extremely high-quality standards; however, all RCI Metalworks products are individually handcrafted, may vary slightly, and may contain minor imperfections. Due to the nature of raw aluminum, the material may have minor scratches and other blemishes caused by the manufacturing process, especially on the back side of product. RCI Metalworks is constantly seeking to improve its products and reserves the right to make changes to any product.