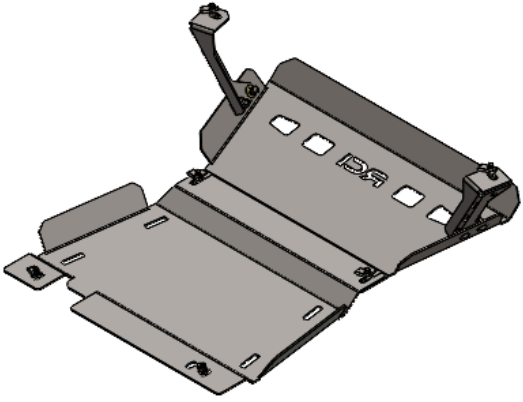




RCI 19+ Chevy Silverado Engine Skid Plate Installation Guide

ITEM NO.	PART NUMBER	DESCRIPTION	QTY.
1	SM-00801	.135MS Silverado Engine Skid R1	1
2	SM-00805	.135MS Silverado Engine Mount Driver R1	1
3	SM-00800	.135MS Silverado Engine Mount Passenger R1	1
4	SM-00802	.135MS Silverado Secondary Skid R1	1
5	HK-00132	KIT: 19+ SILVERADO ENGINE SKID HARDWARE	1
5.1	HW-00025	M8-1.25 X 30MM HEX FLANGE BOLT	6
5.2	HW-00037	5/16 USS FLAT WASHER ZINC	6
5.3	HW-00024	5557B: M8-1.25 U-NUT BLACK	6
5.4	HW-00052	3/8-16 X 1 CARRIAGE BOLT GR-5	4
5.5	HW-00026	3/8 USS FLAT WASHER THRU HARD	4
5.6	HW-00029	3/8 SPLIT LOCK WASHER ZINC	4
5.7	HW-00030	3/8-16 FIN HEX NUT GR-5 ZINC	4
6	BX-00015	31x20x4 F150 FRONT	1



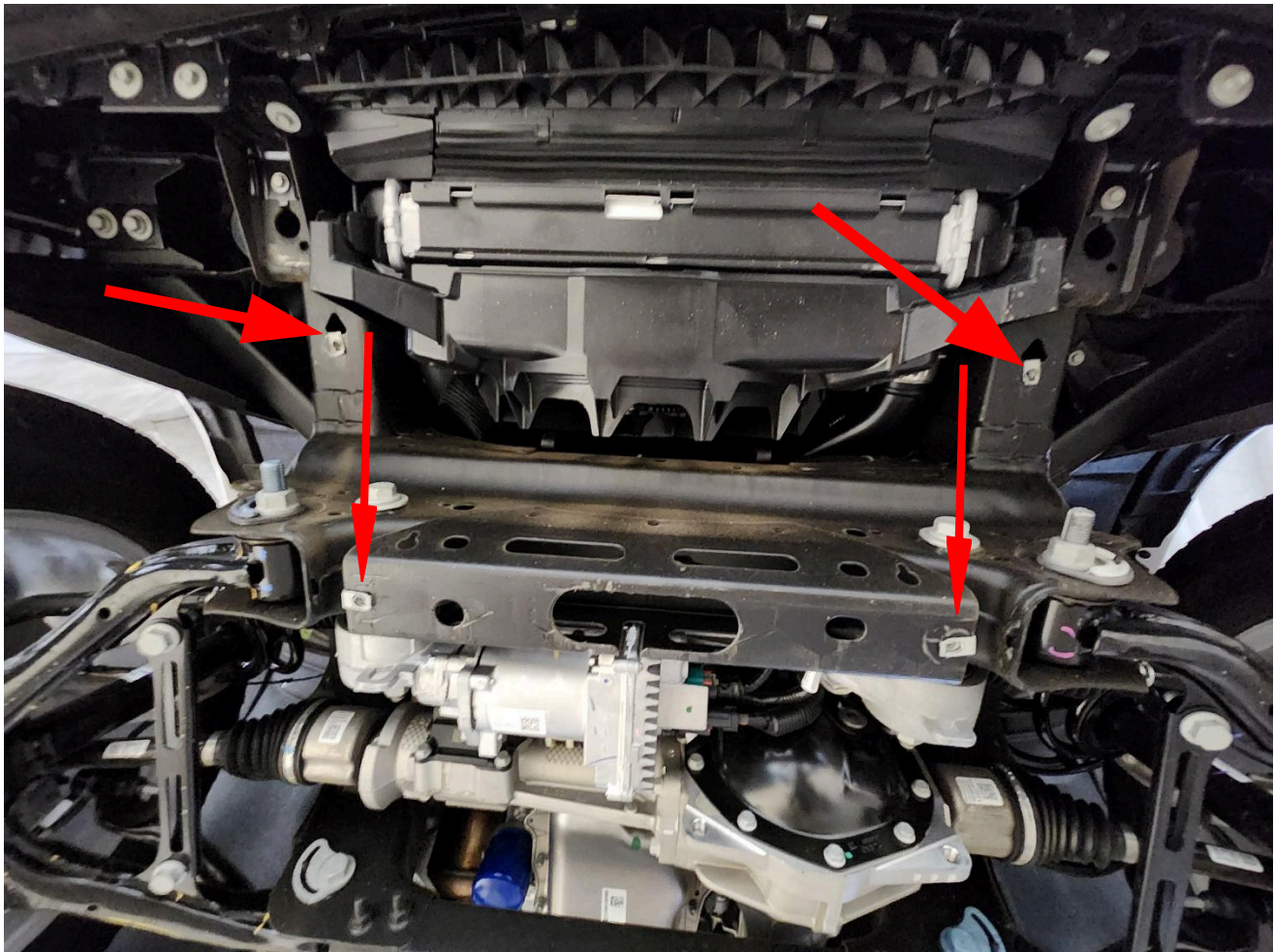
UNLESS OTHERWISE SPECIFIED:	PROPRIETARY AND CONFIDENTIAL	DRAWN	NAME	DATE
DIMENSIONS ARE IN INCHES TOLERANCES: FRACTIONAL ± 0.010 ANGULAR: BEND ± 0.5 TWO PLACE DECIMAL ± 0.015 THREE PLACE DECIMAL ± 0.010	THE INFORMATION CONTAINED IN THIS DRAWING IS THE SOLE PROPERTY OF RCI Offroad. ANY REPRODUCTION IN PART OR AS A WHOLE WITHOUT THE WRITTEN PERMISSION OF RCI Offroad IS PROHIBITED.	NA	NA	NA
Export Date				
7/10/2024				
RCI OFFROAD				
TITLE: SLVRD-19-FRONT - SHIP BOM				
Item Number FG-00479				REV 1
DO NOT SCALE DRAWING		SCALE: 1:20	WEIGHT:	SHEET 1 OF 14

Figure 1:BOM

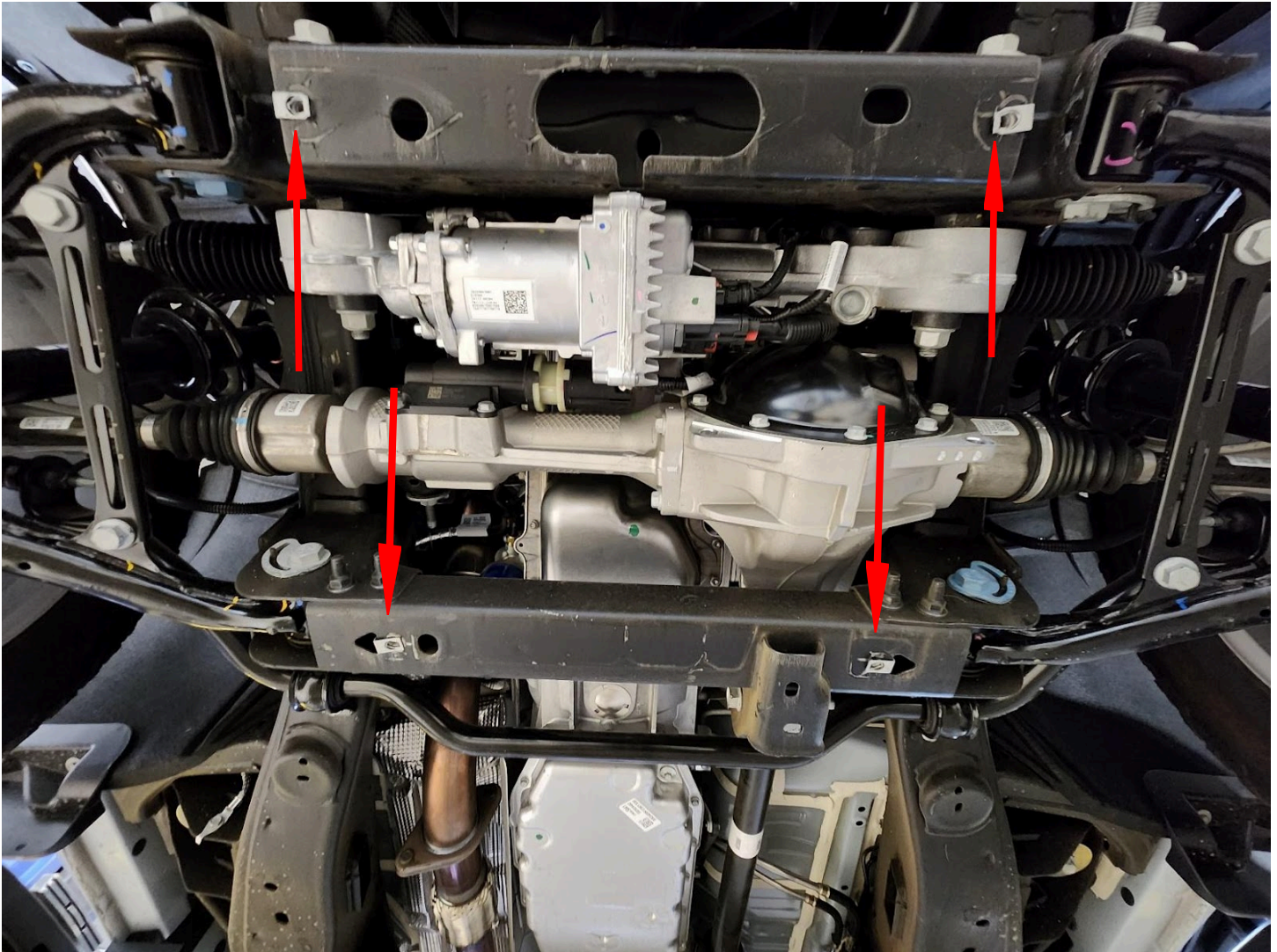
INSTALLATION STEPS:

****Use hand tools, impact wrenches may cause damage if over torqued.**

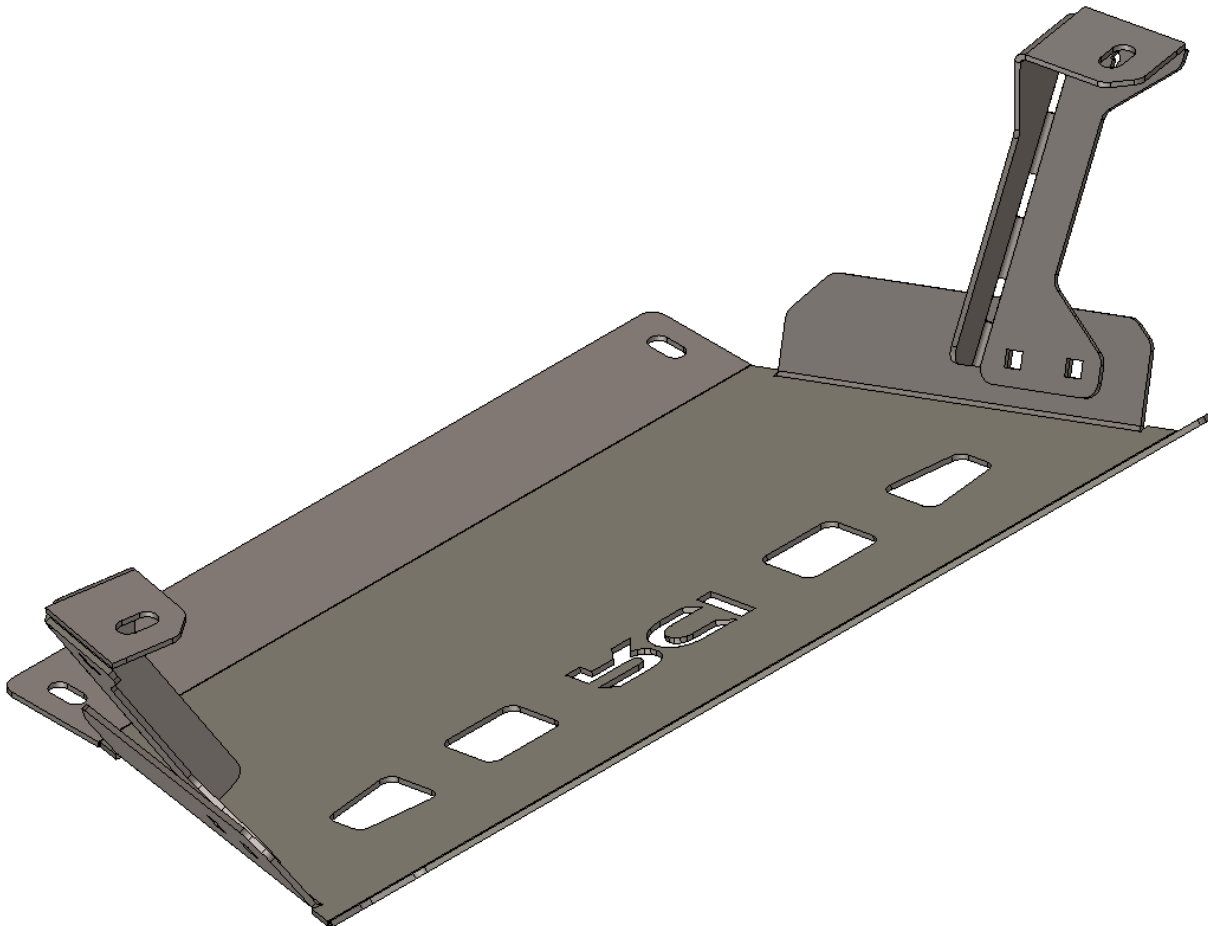
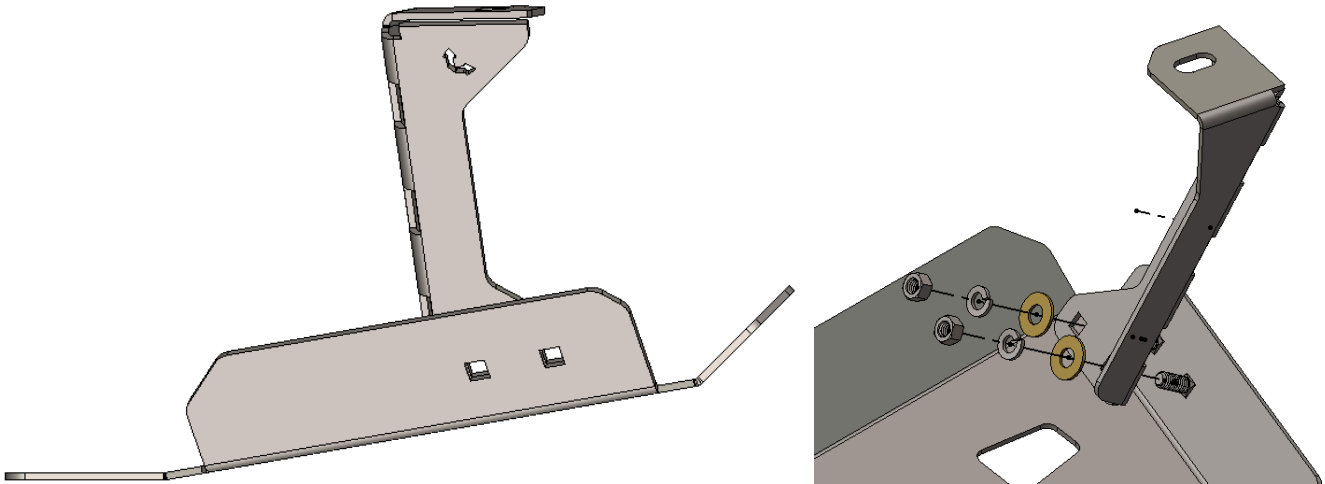
1. Begin by unpacking and removing all components and hardware. Please verify that all hardware, components, and mounting components are present. Please reference your original order invoice and verify all items are accounted for.
 - a. Removing the wheels and tires from the rear axle will make the installation process significantly easier; however, it is not strictly necessary, and installation can be performed with the wheels and tires on the vehicle and the vehicle
2. Remove any skid plates being replaced with RCI components from the vehicle.
3. Ensure a set of M8 speed clips are installed in the locations shown below. If the vehicle did not come with m8 speed clips installed, m8 speed clips have been included with the hardware kit included with this order.



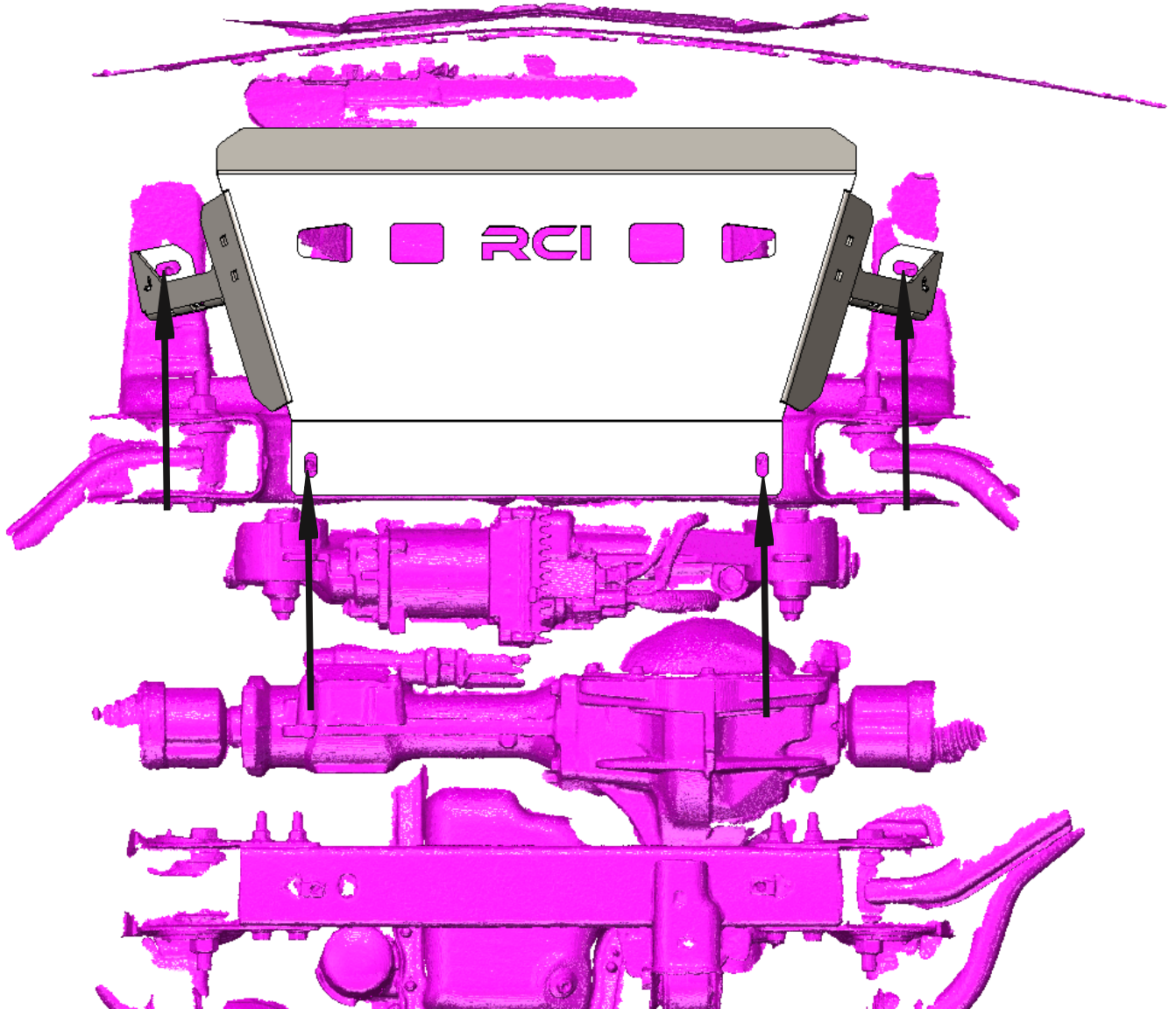
RCI OFFROAD 



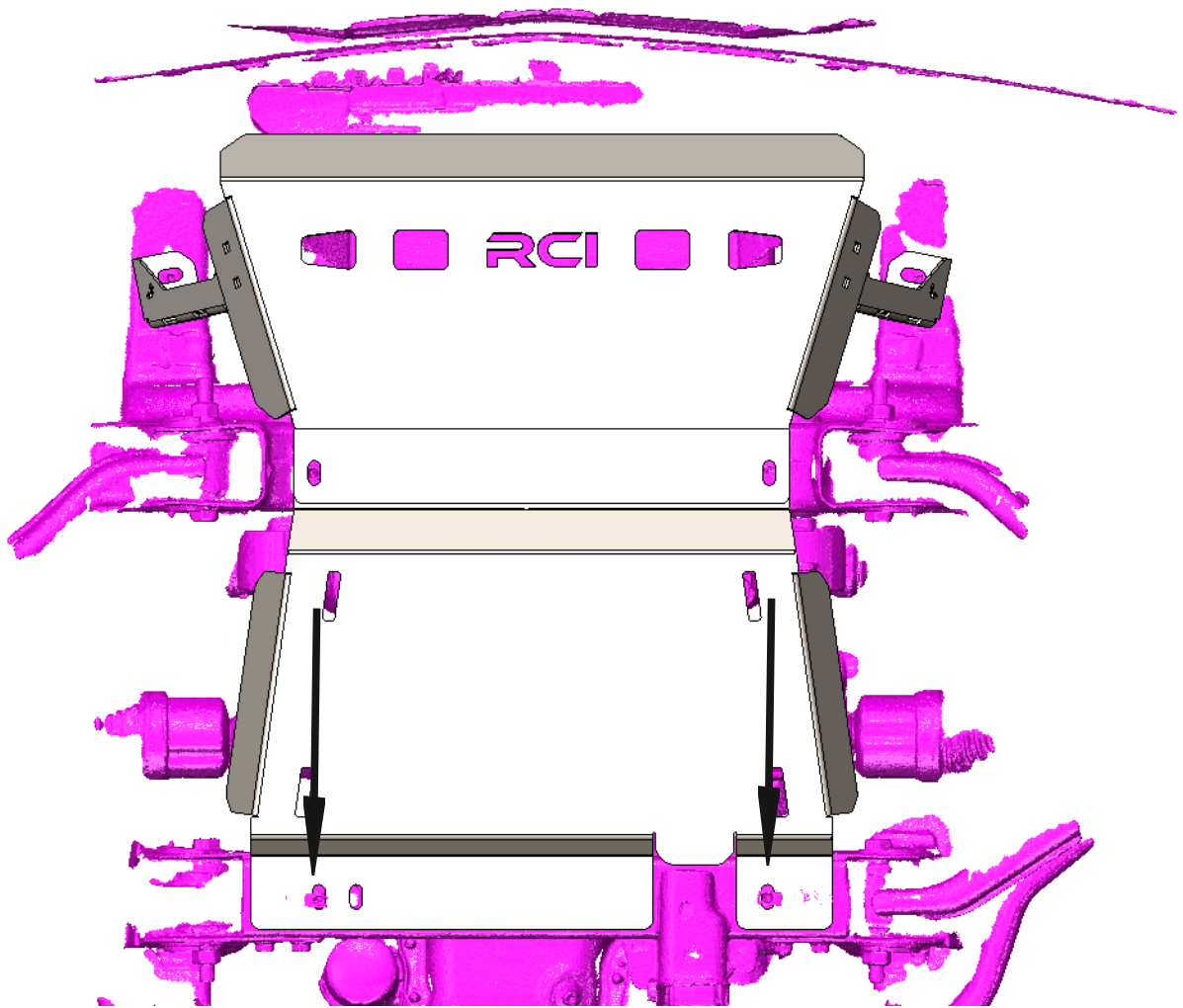
4. Use 4 sets of the included 3/8" carriage bolts, washers, split washers, and nuts to secure the pair of engine skid plate mounting brackets to the engine skid plate.
 - a. The engine mounts are side and direction specific. To orient the mounts correctly, ensure that the arrows located on the side of the mounting brackets are pointing up and away from the skid plate and towards the front of the vehicle as shown below.



5. With the skid plate mounts secured to the engine skid plate, hold the skid plate up to the vehicle frame and loosely install an m8 bolt with washer in the mounting locations of the engine skid plate as shown. Leave at least 1/4" gap between the skid plate and the vehicle frame.



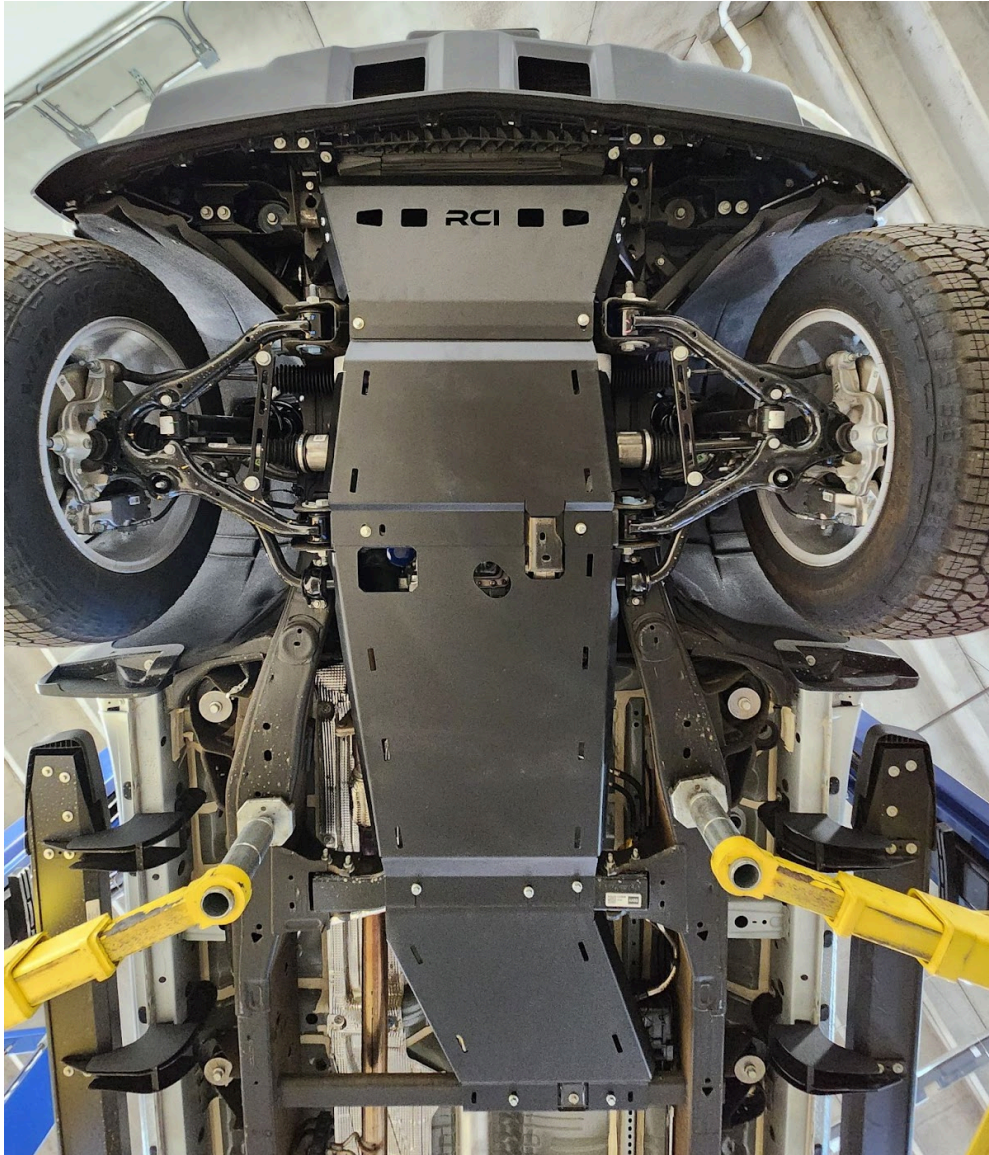
6. Slide the front of the secondary skid plate in the space between the rear flange of the engine skid plate and the vehicle frame. Loosely install an m8 bolt with washer in the mounting locations of the secondary skid plate as shown, leaving at least 1/4" gap between the skid plate and the vehicle frame.



7. If you're also installing an RCI transmission skid plate, please move on to the transmission skid plate. Otherwise, tighten all hardware.



Enjoy your new RCI protection!



Share your new install with us on social media!

We love seeing our products out in the wild!

www.rcimetalworks.com

sales@rcioffroad.com

970-797-3089

REV: 1 | 9/29/2022

Disclaimer: The products sold by RCI Metalworks are intended for off-road use only, should not be modified, and are for use only on the vehicle(s) specifically stated. RCI Metalworks makes no warranties express or implied, including of fitness for a particular purpose or merchantability. RCI Metalworks will not be liable for any damages arising out of the use or misuse of its products. It is the customers' responsibility to ensure the products are safely and properly attached to the vehicle, and all products should be installed by trained professionals. We strive to maintain extremely high-quality standards; however, all RCI Metalworks products are individually handcrafted, may vary slightly, and may contain minor imperfections. Due to the nature of raw aluminum, the material may have minor scratches and other blemishes caused by the manufacturing process, especially on the back side of product. RCI Metalworks is constantly seeking to improve its products and reserves the right to make changes to any product.

