



**SHERPA**  
PREMIUM RACK SYSTEMS

# LOAD BAR

RACK SYSTEM INSTALL GUIDE

# HARDWARE CHECKLIST

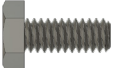
**8**

1/4"-20  
(1") SB



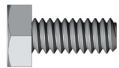
**2**

1/4"-20 (9/16")  
HEX - BLACK



**8**

1/4"-20 (9/16")  
HEX - SILVER



**8**

1/4"-20  
(1") CARRIAGE -  
BLACK



**10**

1/4"-20  
TNUT



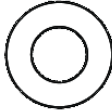
**18**

1/4" FLAT  
WASHER - BLACK



**16**

1/4" FLAT  
WASHER - SILVER



**8**

1/4"-20  
NYLOCK NUT



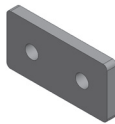
**2**

CROSSBARS



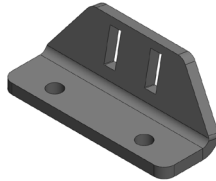
**4**

END CAPS



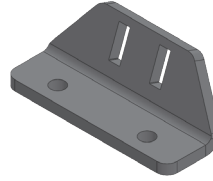
**4**

MOUNT FOOT  
- FLAT



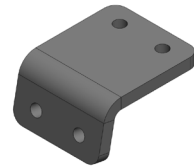
**4**

MOUNT FOOT  
- CONTOUR



**4**

MOUNT TOP



## VEHICLE SPECIFIC HARDWARE

Vehicle-specific hardware, mounts, or other components may vary in appearance or are not shown on this page, though they are included in your kit.

**1**

Name Plate

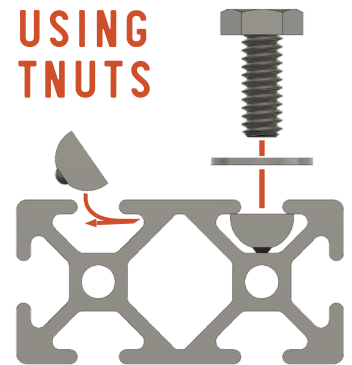


## BEFORE YOU START

Remove your stock roof rack (if applicable). Loosen all stock rack bolts before fully removing any of them. This will prevent the capture plates from working loose inside of the roof. Work slowly when removing the stock rack as not to break the plastic sleeves.

The below assembly images may differ slightly in appearance from actual product.

## USING TNUTS



# ASSEMBLY

For all load bars follow the relevant information in all 3 sections:

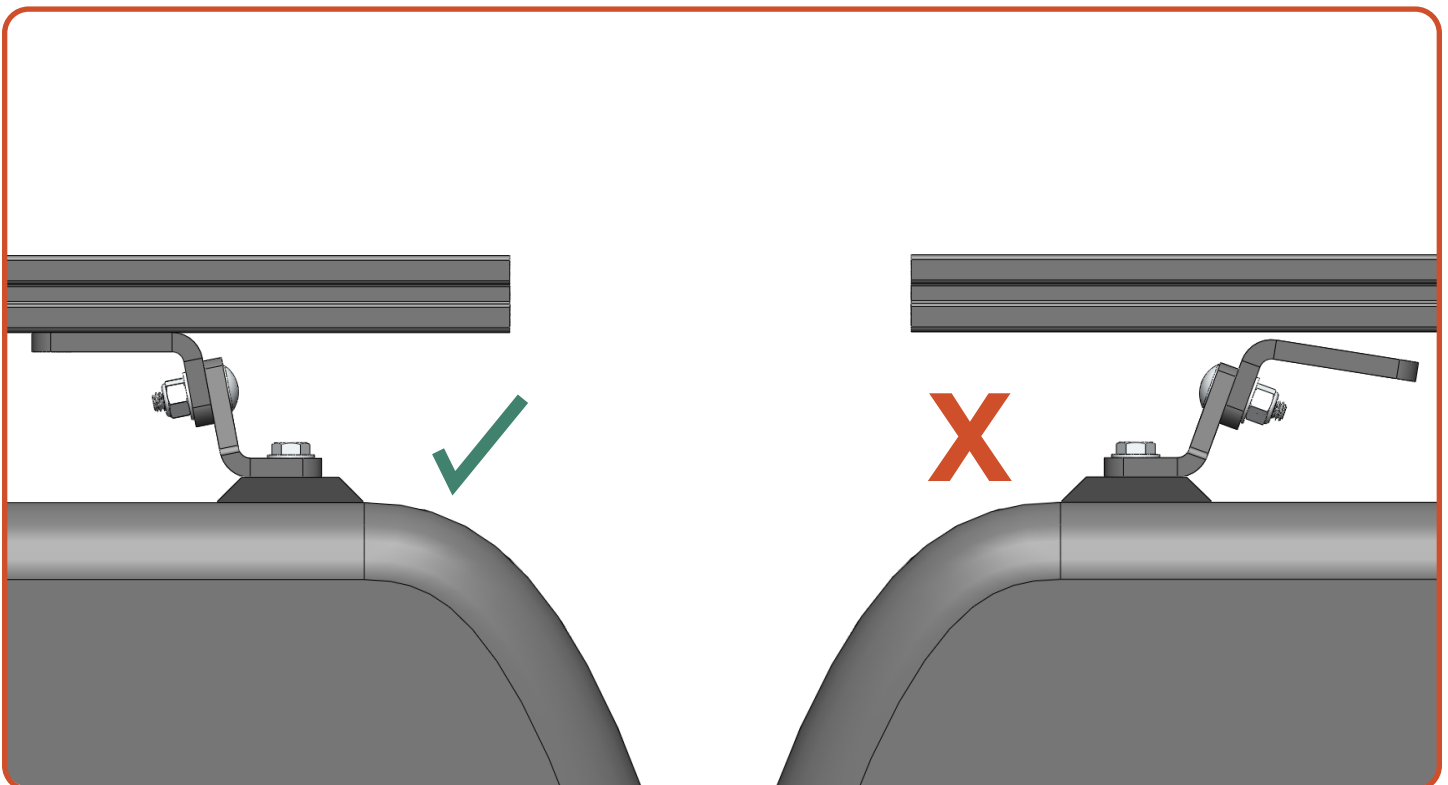
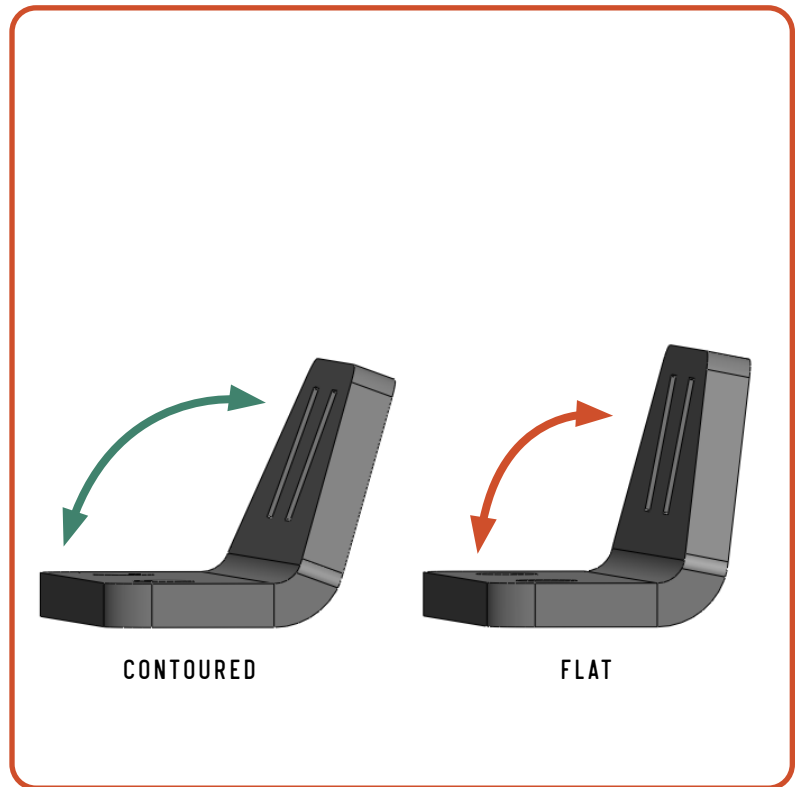
1. Locate the appropriate mount type to assemble the mounts (Section Title in Green)
2. Locate the appropriate hardware size to install the mounts (Section Title in Black)
3. Continue the install at the text "Continue instructions here" (Section Title in Orange)

# **ASSEMBLY - UNIVERSAL MOUNTS**

# UNIVERSAL MOUNTS

## 01 MOUNT ASSEMBLY

Your kit comes with both a flat and contoured lower foot. Contoured are used where there is more slope to the side on your roof or rails. Use the mount that best fits your application.



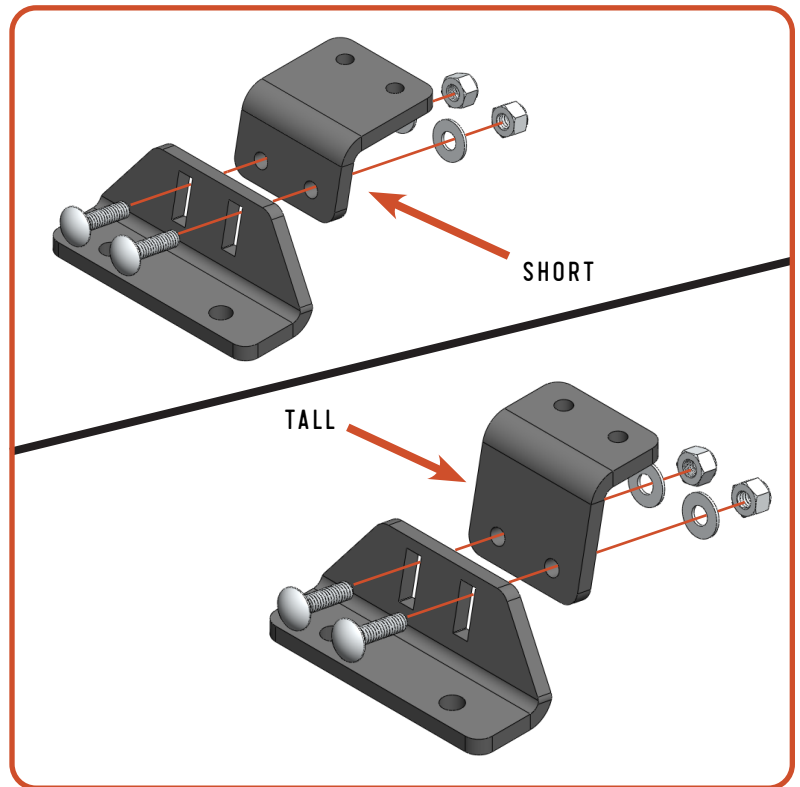
# UNIVERSAL MOUNTS

## 02 MOUNT ASSEMBLY

Required Components:

- 4 Mount Foot - Top
- 4 Mount Foot - Flat/Contour
- 8 1/4"-20 x 1" Carriage Bolt
- 8 1/4" Flat Washer
- 8 1/4"-20 Nylock Nut

Assemble the mounting brackets in one of two configurations; most applications can be assembled in the "short" configuration, but if your load bar system requires more height, assemble them in the "tall" config.



# ASSEMBLY - STANDARD MOUNTS

VARIOUS SIZES

# MOUNTS

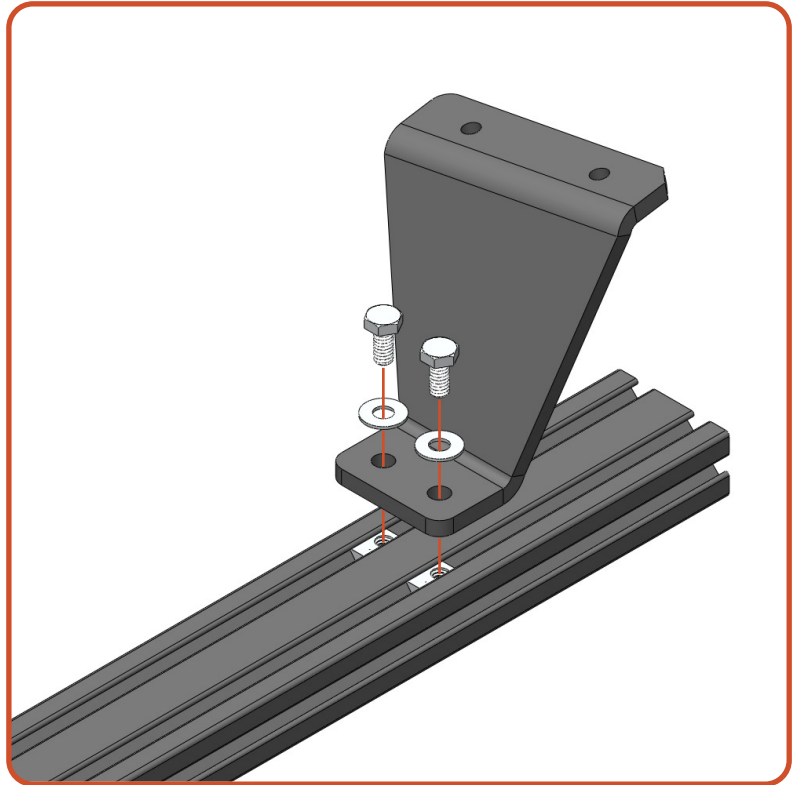
## 01 MOUNT ASSEMBLY

Required Components:

- 1 Crossbar
- 2 Front Mounts
- 4 1/4"-20 x 9/16" Hex Bolts
- 4 1/4" Flat Washers
- 4 Tnuts

Drop 4 tnuts into the slots on the crossbar and line them up with the holes in mounts. Secure top of the mounting bracket to the crossbar leaving the hardware loose so that it can be adjusted during a later step.

Note: Repeat this process for all relevant mounts (Front, Middle, Rear) Reference the **Hardware Checklist** to identify mount location.



# INSTALL - M8 MOUNTS

VARIOUS LENGTHS

# SPACER ASSEMBLY

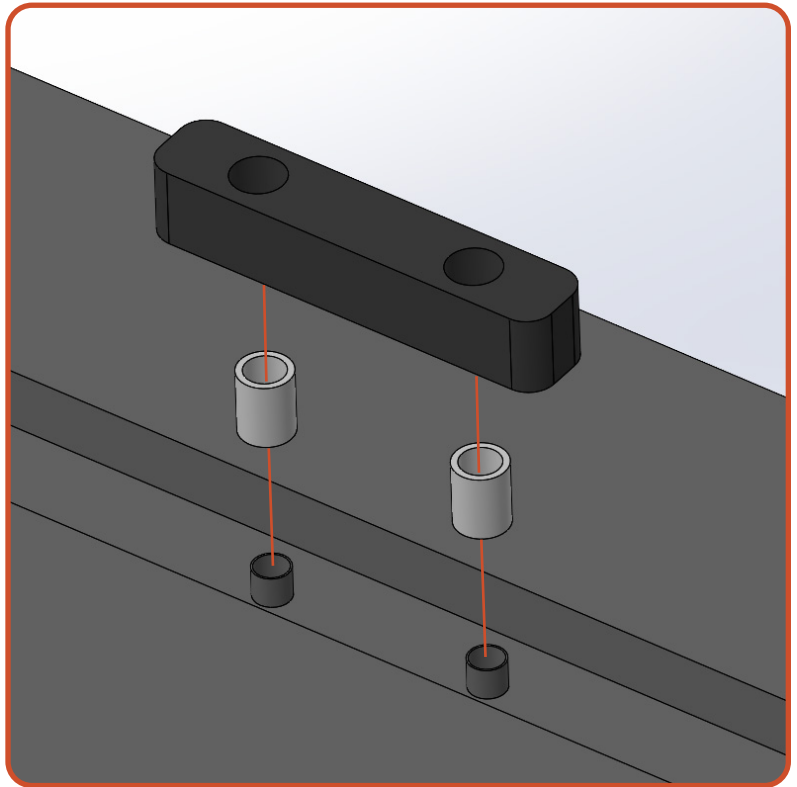
## 01 SPACER/RUBBER INSTALL

Required Components:

**All** Rubber Spacers

**All** M8 Spacers

Install the spacers on the plastic inserts in the roof gutter. Once the spacers are set, place the black rubber over the spacers pressing into place.



# MOUNT INSTALL

## 01 INSTALL ON VEHICLE

Required Components:

- 4 M8-1.25x45 Hex Bolts  
**per mount assembly**
- 4 M8 Bonded Washers  
**per mount assembly**
- 2 Rubber Spacers  
**per mount assembly**
- 4 M8 Spacers  
**per mount assembly**

Position the mounting bracket on the rubber spacer. Apply a drop of blue threadlocker to each of the bolt threads and secure them with bonded washers passed through the bracket, rubber, and into the holes in the roof. Tighten the bolts to compress the washers.

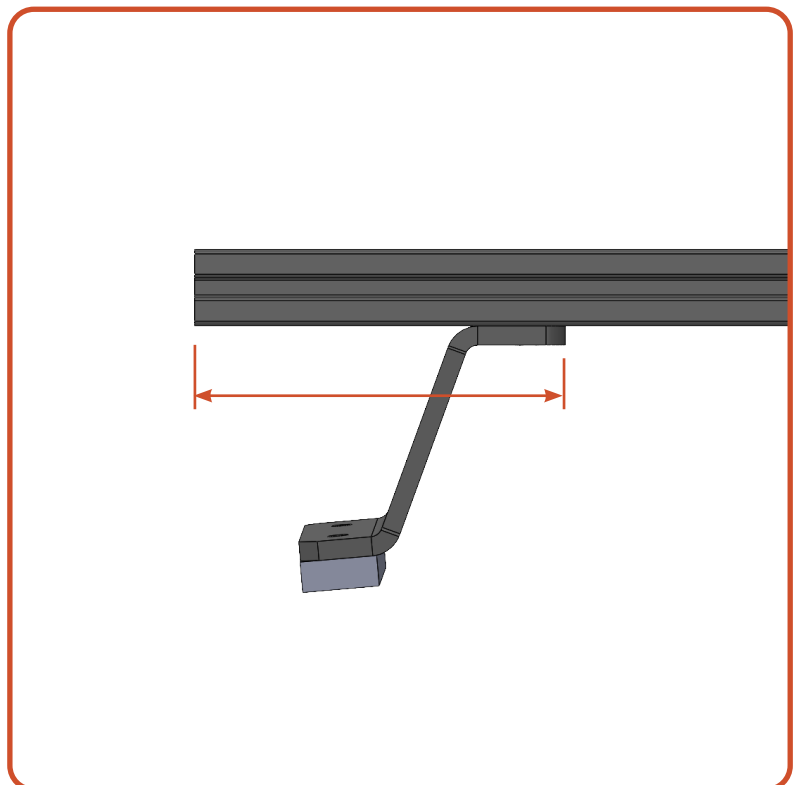
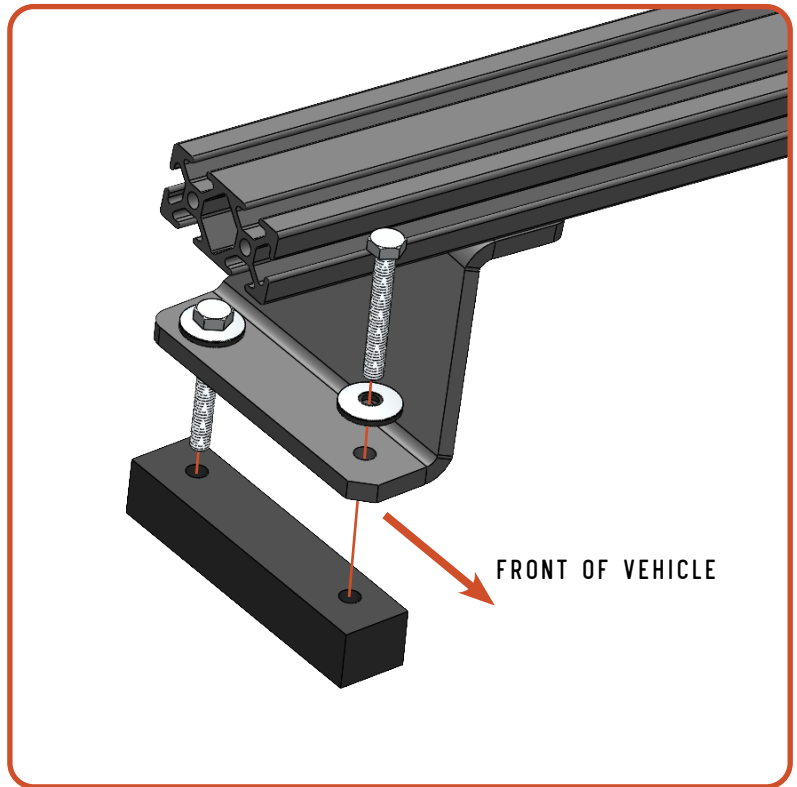
Note: Chamfered corner on the lower part of the mount faces the front of the vehicle.

**The bonded washers should compress and become flat, but not concave. Do not over tighten these mounts.**

## 02 CENTER THE MOUNTS

After the main support crossbar have been secured to the vehicle, use a tape measure and center all of the bars on the vehicle. Measure from the inside edge of the mount to the outside face of the crossbar and make these equal side-to-side.

Tighten the hardware to the crossbar.



# INSTALL - M6 MOUNTS

VARIOUS LENGTHS

# SPACER ASSEMBLY

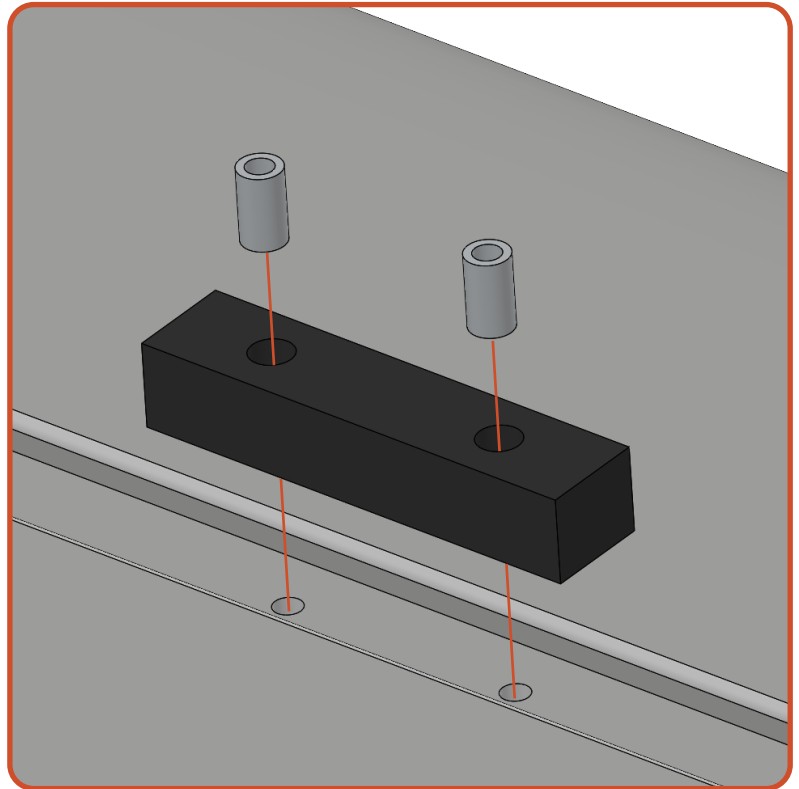
## 01 SPACER INSTALL

Required Components:

**All** Rubber Spacers

**All** Spacers

Insert the aluminum spacers into the rubber spacer and align over the mounting holes on the roof of the vehicle.



# MOUNT INSTALL

## 01 INSTALL ON VEHICLE

Required Components:

- 4 M6-1.00x30 Hex Bolts
- 4 M6-1.00x40 Hex Bolts
- 8 M6 Bonded Washers

Position the mounting bracket over the rubber spacer. Apply a drop of blue threadlocker to each of the bolt threads and secure them with bonded washers passed through the bracket, rubber, and into the holes in the roof.

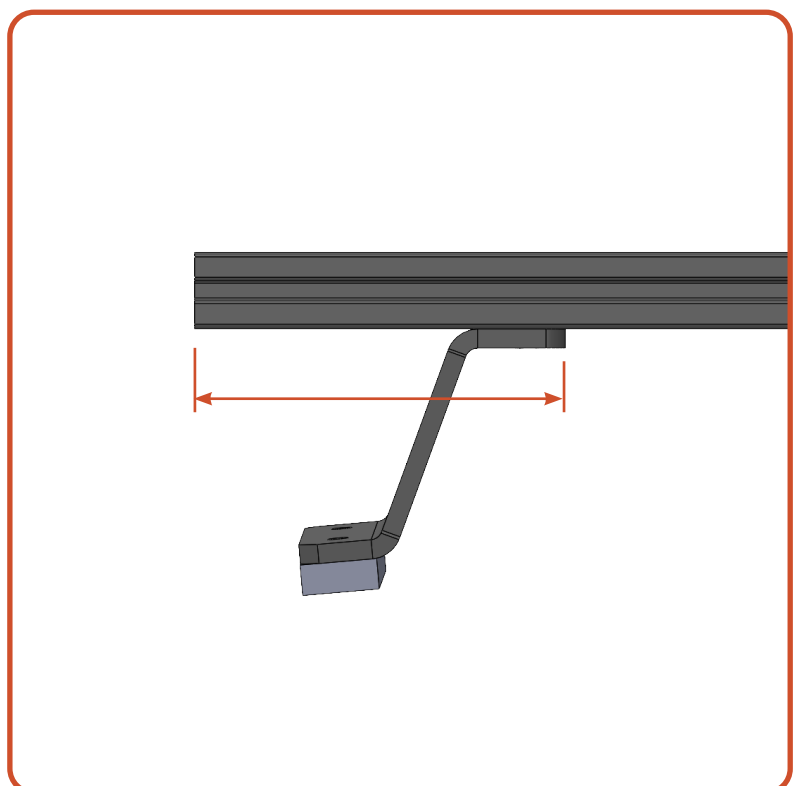
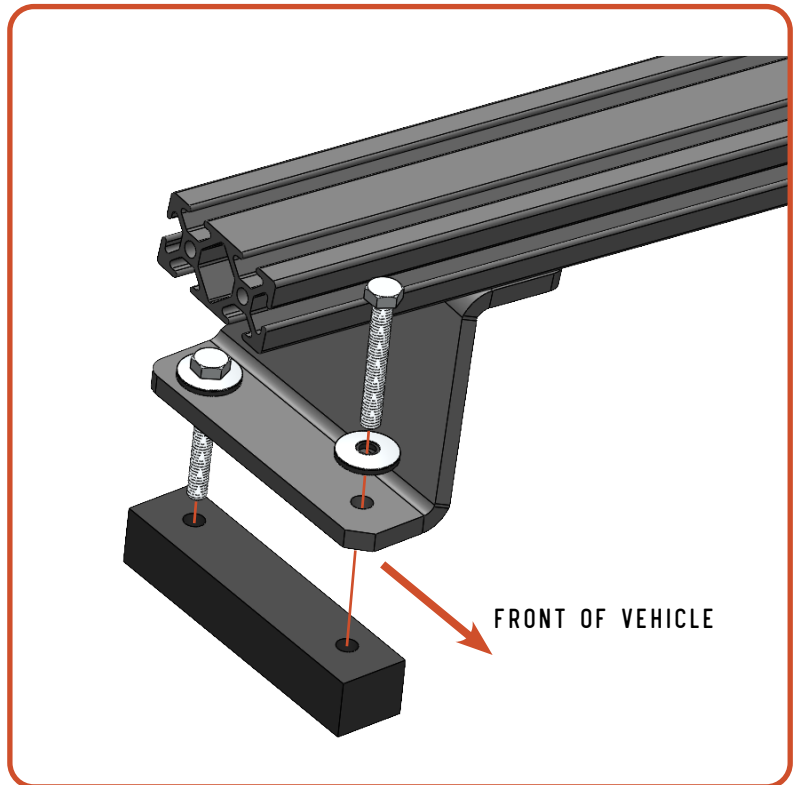
Note: Chamfered corner on the lower part of the mount faces the front of the vehicle.

Note: The thicker rubber spacers and 40mm bolts go on the rear mounts.

**The bonded washers should compress and become flat, but not concave. Do not over tighten these mounts.**

## 02 CENTER THE MOUNTS

After the main support crossbar have been secured to the vehicle, use a tape measure and center all of the bars on the vehicle. Measure from the inside edge of the mount to the outside face of the crossbar and make these equal side-to-side. Tighten the hardware to the crossbar.



# MOUNT INSTALL

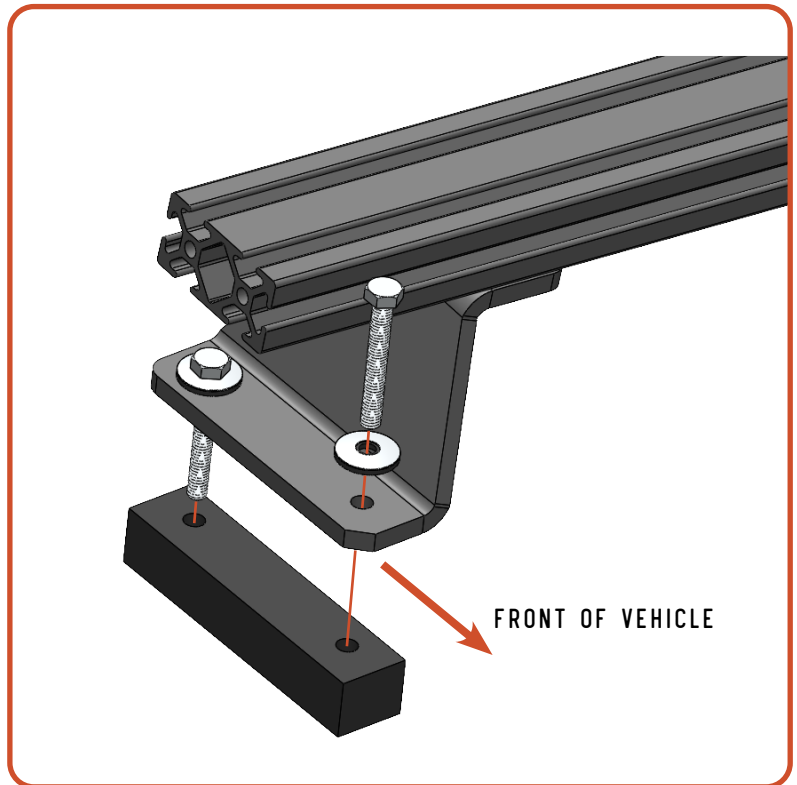
## 01 INSTALL ON VEHICLE

Required Components:

- 10 M6-1.00 x 45 Hex Bolts
- 10 M6 Bonded Washers
- 2 Front Rubber Spacers
- 2 Middle Rubber Spacers
- 2 Rear Rubber Spacers

Position the mounting bracket over the rubber spacer. Apply a drop of blue threadlocker to each of the bolt threads and secure them with bonded washers passed through the bracket, rubber, and into the holes in the roof.

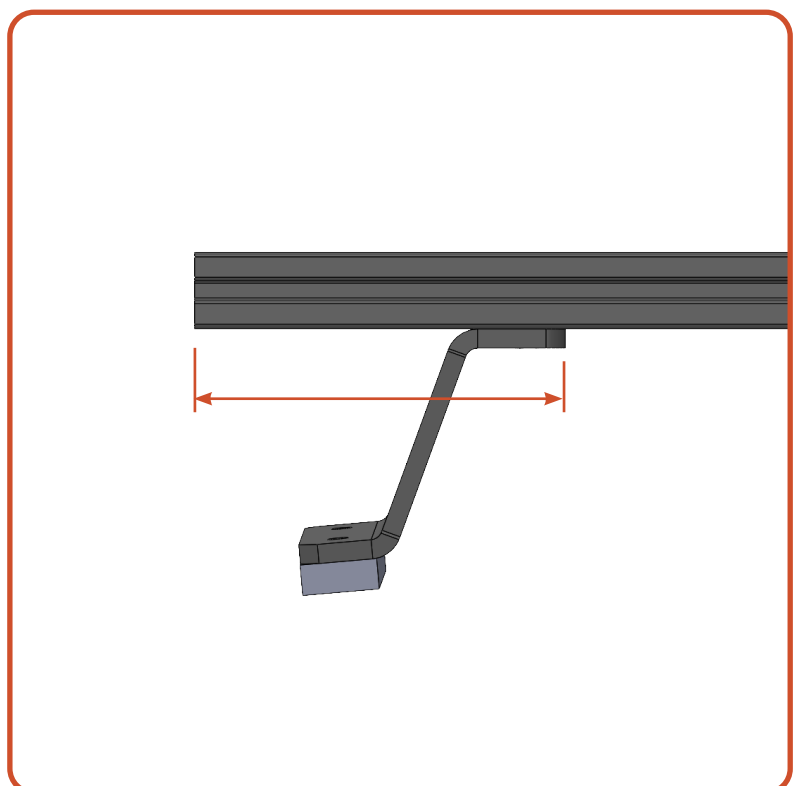
Note: Chamfered corner on the lower part of the mount faces the front of the vehicle.



The bonded washers should compress and become flat, but not concave. Do not over tighten these mounts.

## 02 CENTER THE MOUNTS

After the main support crossbar have been secured to the vehicle, use a tape measure and center all of the bars on the vehicle. Measure from the inside edge of the mount to the outside face of the crossbar and make these equal side-to-side. Tighten the hardware to the crossbar.



# INSTALL - TRACK/ TOPPER MOUNTS

VARIOUS LENGTHS

# MOUNT INSTALL

## 01 INSTALL ON VEHICLE

Required Components:

**2** M6-1.00 x 16 Hex Bolts

**per mount assembly**

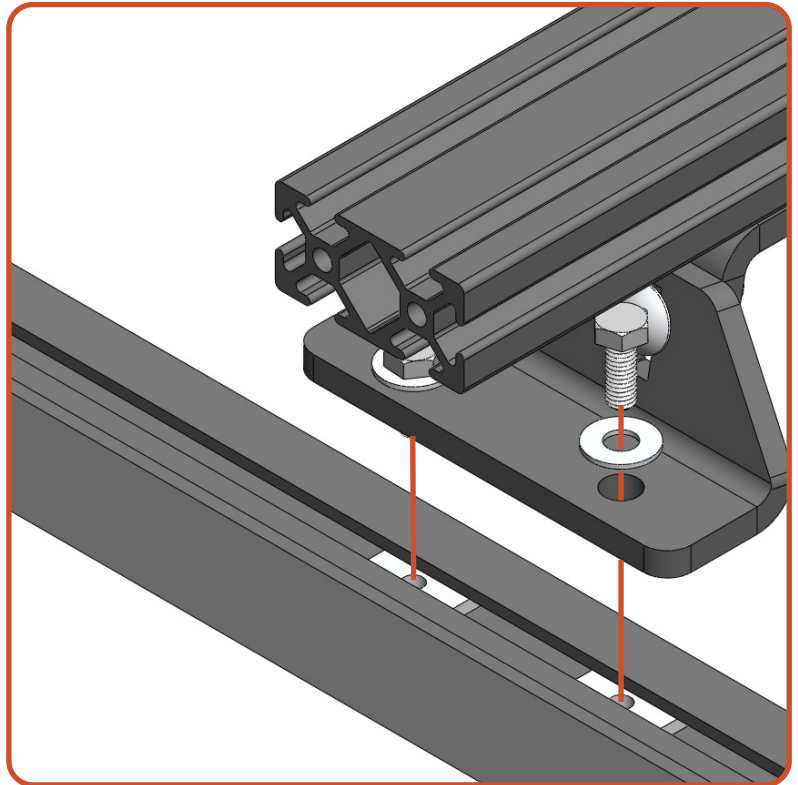
**2** M6 Bonded Washers

**per mount assembly**

**2** M6 Track Nuts

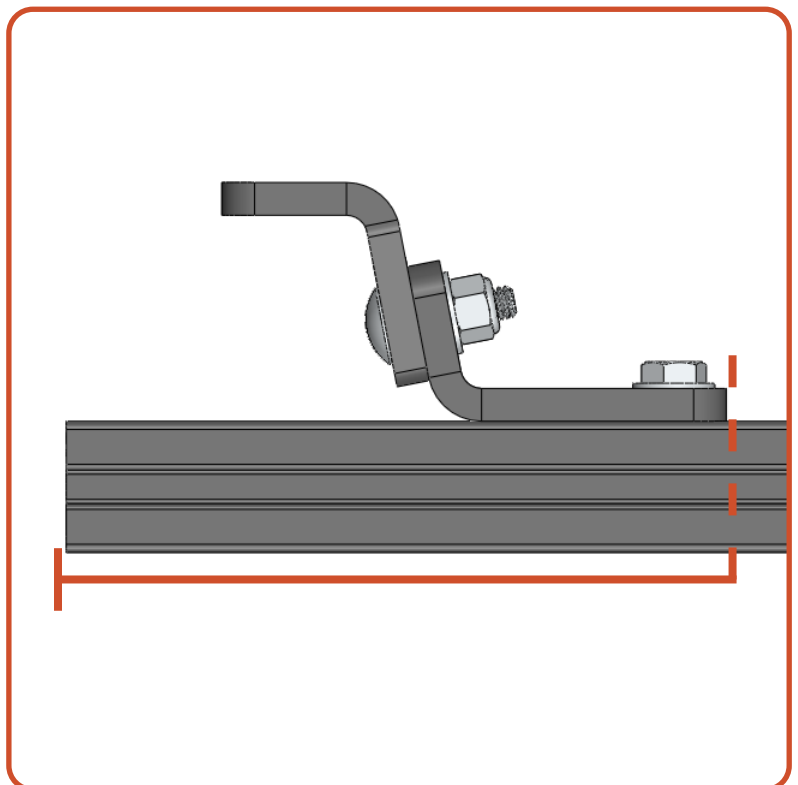
**per mount assembly**

With the two main support crossbars assembled, flip them over and align the mounting brackets with the OEM roof tracks. Secure them to the vehicle using the M6 bolts, washers, and track nuts. Leave this hardware loose so that it can be adjusted once the sideplates are attached.



## 02 CENTER THE MOUNTS

Center the crossbars on the vehicle using a tape measure. Measure the distance from the ends of the crossbar to the inside edge of the mounting bracket on both sides of the vehicle. (shown to the right)



**CONTINUE  
INSTRUCTION  
HERE**

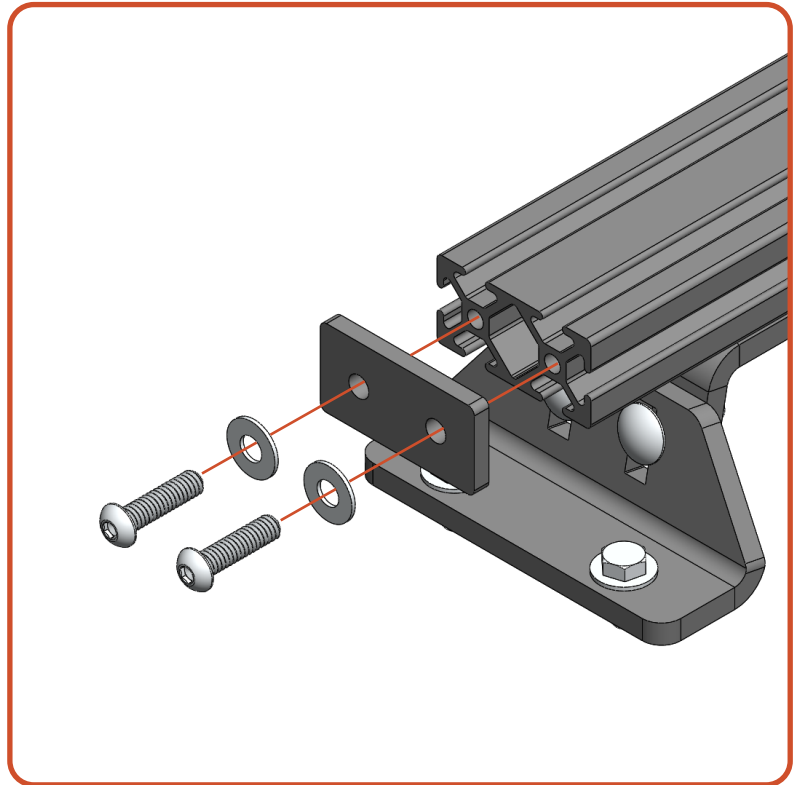
# END CAP INSTALL

## 01 INSTALL END CAPS

Required Components:

- 4 1/4"-20x1" Socket Bolt  
**per mount assembly**
- 4 1/4" Washers  
**per mount assembly**
- 2 End Caps  
**per mount assembly**

Install the supplied end caps with the bolts and washers



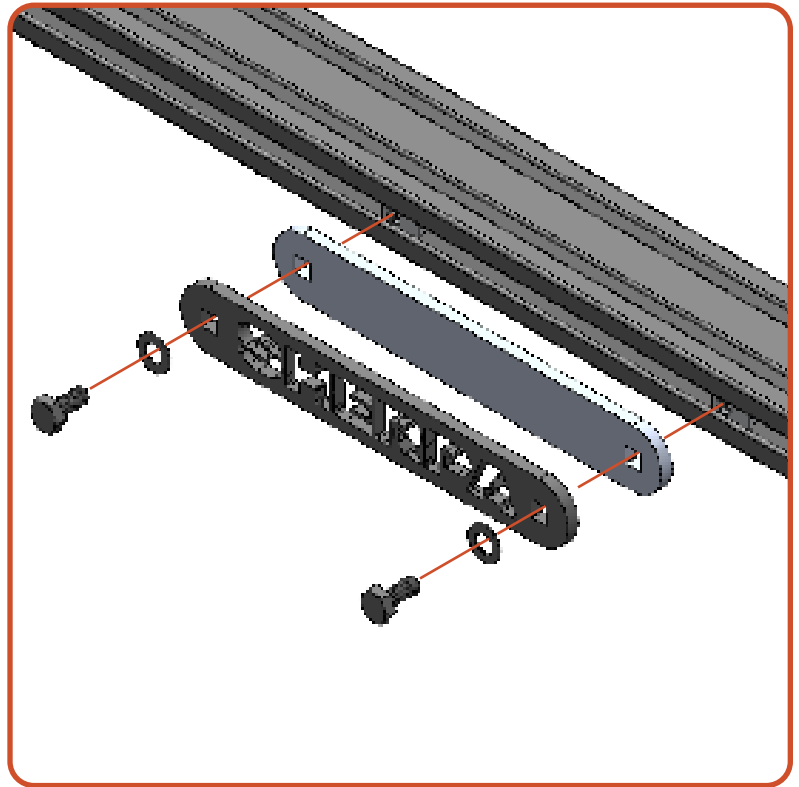
# NAMEPLATE INSTALL

## 01 NAMEPLATE INSTALL

Required Components:

- 2 1/4"-20 x 9/16" Hex Bolts
- 2 1/4"-20 Tnuts
- 2 1/4" Flat Washers
- 1 Sherpa Name Plate
- 1 Name Plate Backer

Place the tnuts into the rear most crossbar on the rack. Using the bolts and washers attach the name plate and name plate backer to the cross bar.



NOW GET OUT THERE AND  
**EXPLORE.**

**WELCOME TO THE SHERPA FAMILY!**  
MAKE SURE TO FOLLOW US ON YOUR SOCIALS AND TAG US IN YOUR ADVENTURES.

All products built and designed by Sherpa Equipment Company are intended for off-road use and should be assembled, installed, and used according to Sherpa Equipment Company's recommendations. Sherpa Equipment Company's products should be used safely with good judgment towards others and surroundings.

By installing Sherpa Equipment Company's products on your vehicle you assume all liability. Sherpa Equipment Company will not be held liable for damages or loss associated with the installation or use of its products. It is recommended that you inspect your roof rack within the first 100 miles of installation and every 500 miles after.