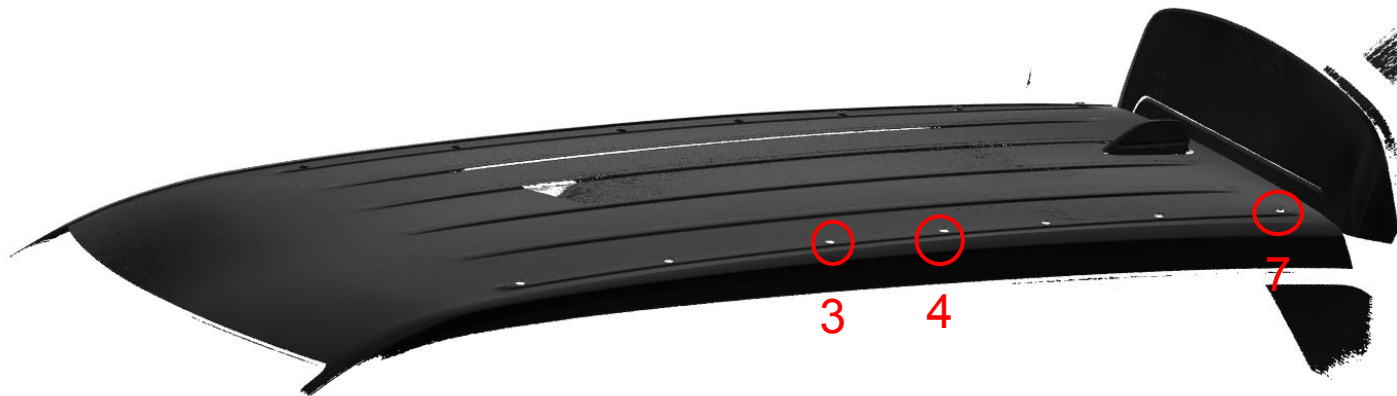


# Jeep Grand Cherokee L Prinsu Rack Summarized Install Instructions

- Remove factory roof rails
- Clean roof surface if necessary
- Seal mounting holes 3,4, and 7 on both sides



# Sealing Unused Mounting Holes

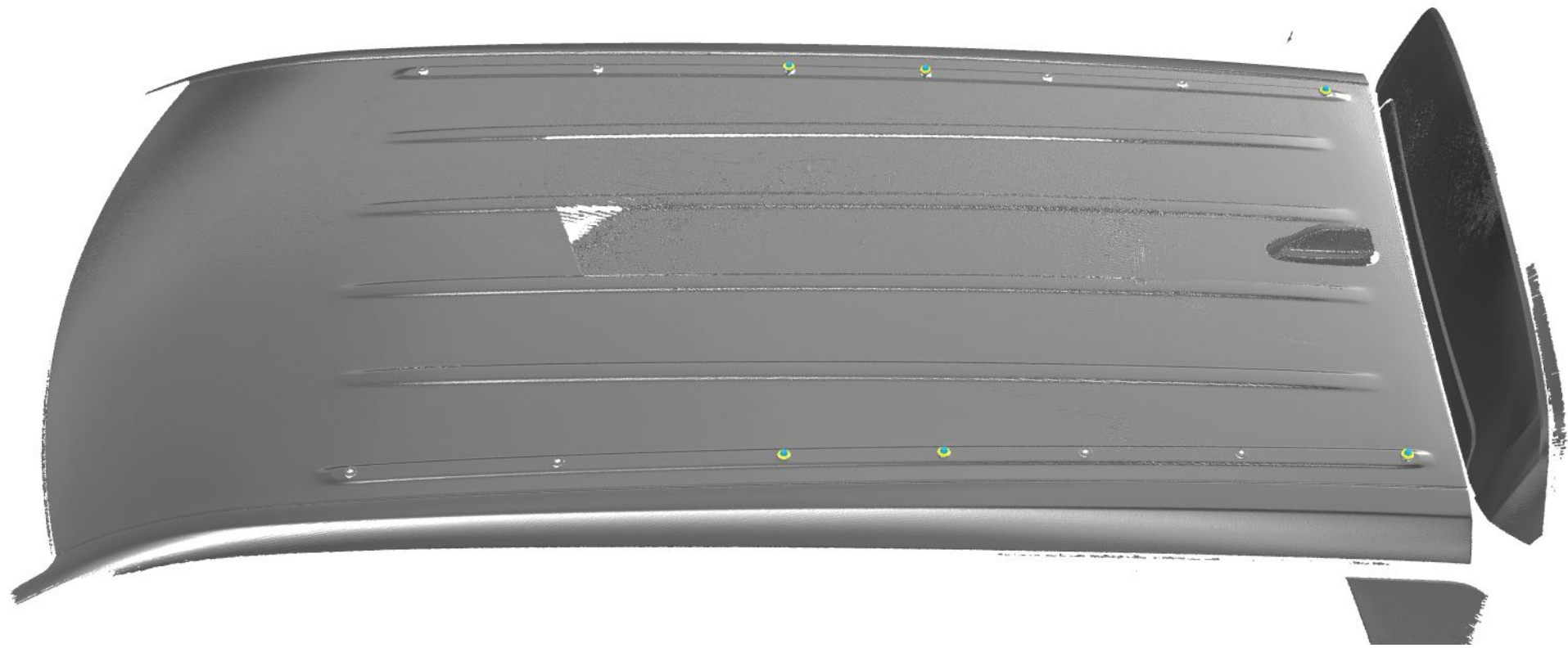
1. Place EPDM Washer over mounting hole

2. Fill mounting hole/washer with RTV Silicone

3. Thread and tighten M6 flange bolt

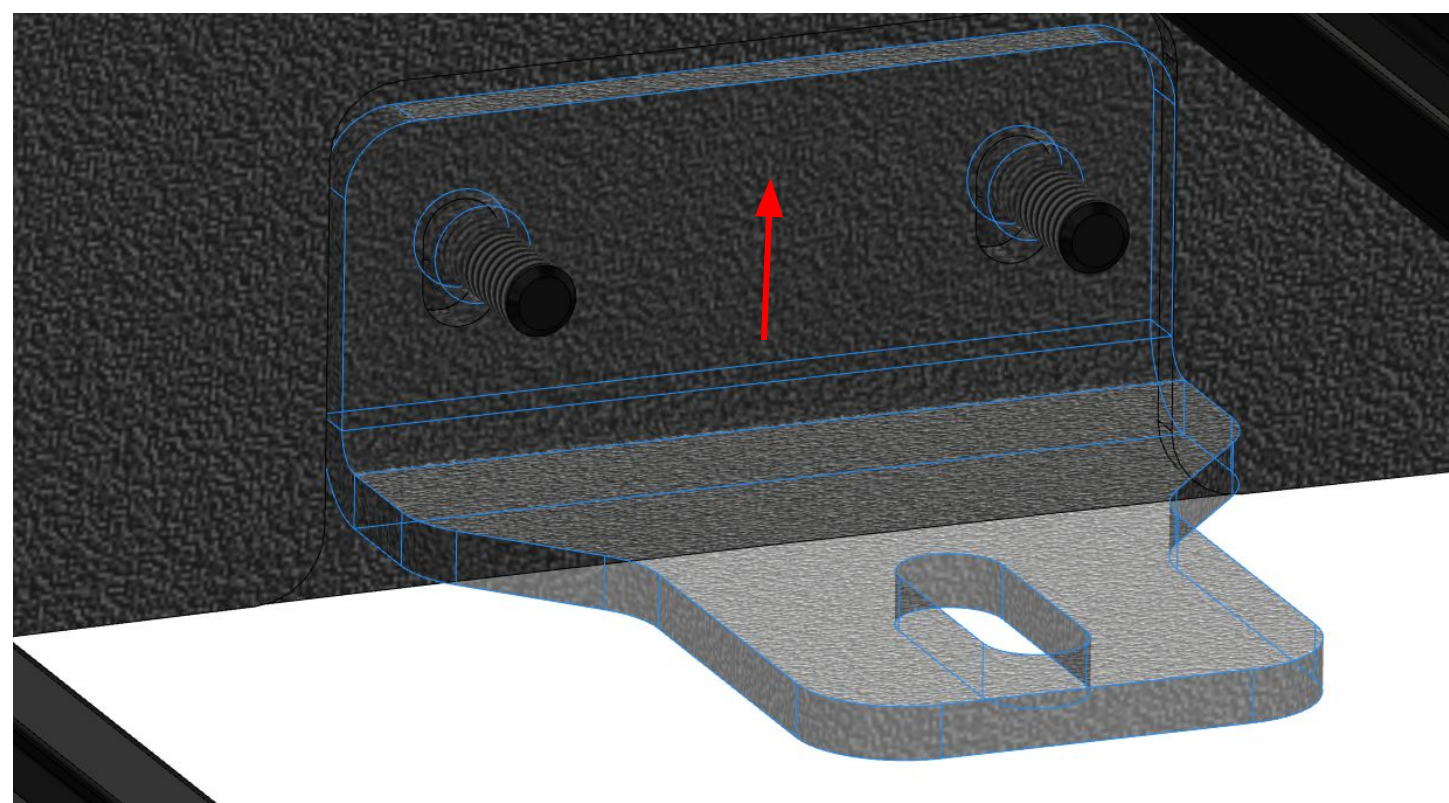


Apply this step to all 6 unused mounting holes






- Assemble rack as shown
- Last crossbar must be vertical to be compatible with vehicle antenna
- Use threadlocker on each screw



When bolting mounting feet to siderails, slide them to the highest position in the slots, this should give a  $\frac{3}{8}$ " gap between the side rail and the roof



**Once roof rack is assembled, place EPDM washers on the rest of the mounting holes, fill the mounting holes and washers with RTV Silicone**



- Set rack on roof
- Make sure the roof rack is centered
- Thread and tighten all remaining M6 bolts with washers