



SHERPA
PREMIUM RACK SYSTEMS

THE JEEP JT QDHD RACK

RACK SYSTEM INSTALL GUIDE

HARDWARE CHECKLIST

1

WIND FAIRING



7

CROSSBARS - 56"



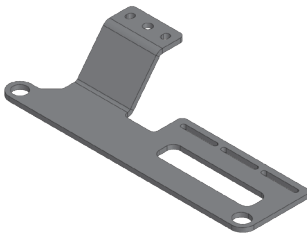
2

SIDEPLATES



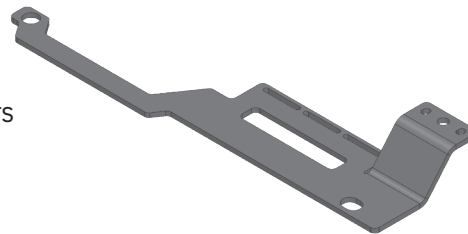
2

FRONT MOUNTS



2

REAR MOUNTS



1

NAME PLATE



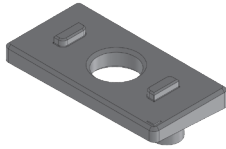
TOOLS REQUIRED:

- 1** 3/16" Allen Key
- 1** 5/32" Allen Key
- 1** 7/16" Wrench
- 2** 9/16" Wrenches or socket/ratchet
- 1** T50 Torx Bit
- 1** 1/4" Drill Bit
- 1** 5/8" Drill Bit
- 1** Drill
- 1** Tape Measure

HARDWARE CHECKLIST

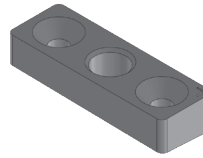
1

TSP-A



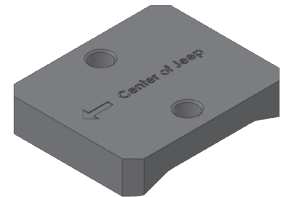
1

BSP-A



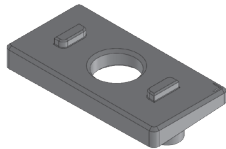
1

Drill Jig



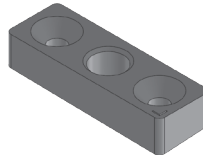
1

TSP-AA



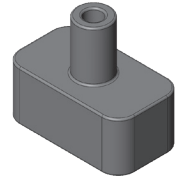
1

BSP-AA



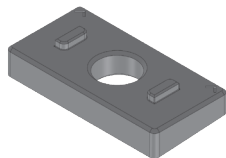
1

Drill Jig



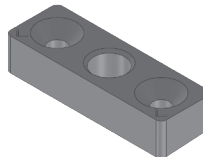
2

TSP-B



2

BSP-B



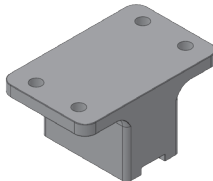
1

Alignment Jig



2

ARCH BRACKET - LONG



4

CAGE SPACER - LONG



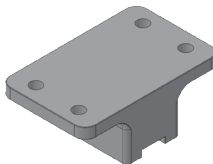
4

1/8" RUBBER GASKET



2

ARCH BRACKET - SHORT



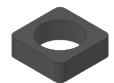
4

CAGE SPACER - SHORT



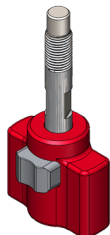
4

3/8" RUBBER GASKET



4

KNOB ASSEMBLIES



NOTE ON SOUND DEADENING HEADLINER

The Sandwich Plates are designed to bottom out for the thickness of the fiberglass. This transfers the load through the rack components and enables a proper seal from the gasket. Due to this, sound deadening headliner panels must be removed or trimmed to fit.

HARDWARE CHECKLIST

6

1/4"-20
(1/2") SB BOLTS -
BLACK



36

1/4" FLAT
WASHERS - BLACK



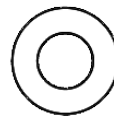
28

1/4"-20
(1") SB BOLTS -
BLACK



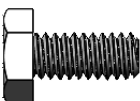
16

1/4" FLAT
WASHERS - SILVER



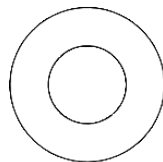
16

1/4"-20
(9/16") HEX BOLTS
- SILVER



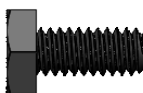
16

3/8" WASHERS -
SILVER



2

1/4"-20
(9/16") HEX BOLTS
- BLACK



24

1/4" TNUTS



8

5/16"-18
(3/4") COUNTERSINK
BOLTS - SILVER



8

3/8"-16 NYLOCK
NUTS - SILVER



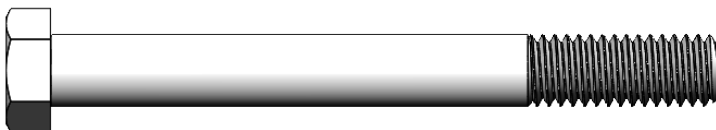
4

3/8"-16X3" HEX
BOLTS - SILVER



4

3/8"-16X3.5" HEX
BOLTS - SILVER



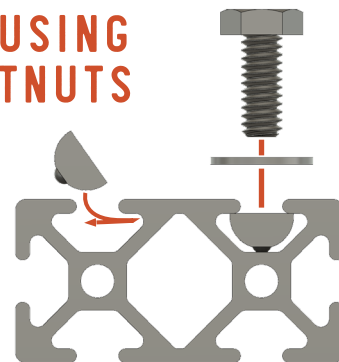
BEFORE YOU START

Confirm you have the factory fiberglass roof. This product is not intended to be used with aftermarket tops.

Count all of your parts against the hardware sheet to ensure you're ready to install. Grab the required tools.

The below assembly images may differ slightly in appearance from actual product.

USING TNUTS



INSTALL PREP

01 FAIRING ASSEMBLY

Required Components:

- 1 Fairing
- 1 Crossbar 56"
- 6 1/4"-20x1/2" SB Bolt
- 1 1/4" Washer

Drop 6 nuts into the slots on the crossbar and line them up with the holes in the fairing. Secure with 6 bolts and washers.



02 RUBBER INSTALL

Required Components:

- 2 Arch Bracket Long
- 2 Arch Bracket Short
- 4 3/8" Rubber Gasket

Insert the rubber into all 4 of the arch brackets



MOUNT INSTALL

01 FRONT MOUNT INSTALL

Required Components:

- 2 Front Mount
- 4 Cage Spacer - Short
- 4 3/8"-16 x 3" Hex Bolt
- 8 3/8" Washer
- 4 3/8"-16 Nylock Nut

Remove the Freedom Panels and set aside. Remove the T50 Torx fasteners from the rear roof portion then remove it from the vehicle.

Install the mount by inserting the cage spacers through the steel mounts and then positioning the assembly into the holes in the top of the factory roll cage. Follow labeling for driver and passenger sides.

Note: On early JT's these holes are round and on later JT's these holes are square

Insert the bolts with a washer top and bottom and torque the nylock nuts to 17 ft-lbs



MOUNT INSTALL

02 REAR MOUNT INSTALL

Required Components:

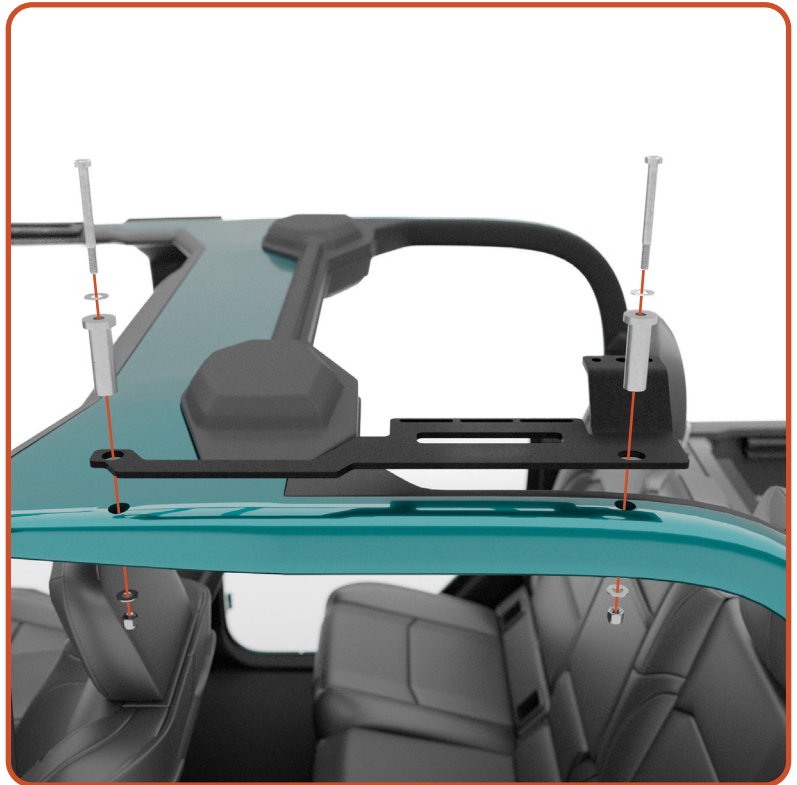
- 2 Rear Mount
- 4 Cage Spacer - Long
- 4 3/8"-16 x 3.5" Hex Bolt
- 8 3/8" Washer
- 4 3/8"-16 Nylock Nut

Install the mount by inserting the cage spacers through the steel mounts and then positioning the assembly into the holes in the top of the factory roll cage. Follow "D/P" labeling for driver and passenger sides.

Note: On early JT's these holes are round and on later JT's these holes are square

Insert the bolts with a washer top and bottom and torque the nylock nuts to 17 ft-lbs

Reinstall the rear roof portion and the Freedom Panels fully.



DRILL ROOF

01 DRILL MOUNT HOLES

Required Components:

- 1 Drill
- 1 1/4" Drill Bit
- 1 Drill Jig 1

Install the Drill Jig 1 into the center hole on a steel mount. Next, using it as an alignment tool, drill upward through the fiberglass. Repeat for all 6 total locations

Note: Hold the drill as vertical as you can to ensure the best fit. Higher speed and lower pressure work best to ensure a clean hole. Don't worry if some of the fiberglass chips, it will be covered and sealed by the brackets. A vacuum can be helpful if you have assistance to minimize fiberglass dust in the vehicle.

Always wear safety glasses and breathing protection when modifying fiberglass.

Again, remove the roof panels for final drilling operations



DRILL ROOF

02 DRILL ADDITIONAL HOLES

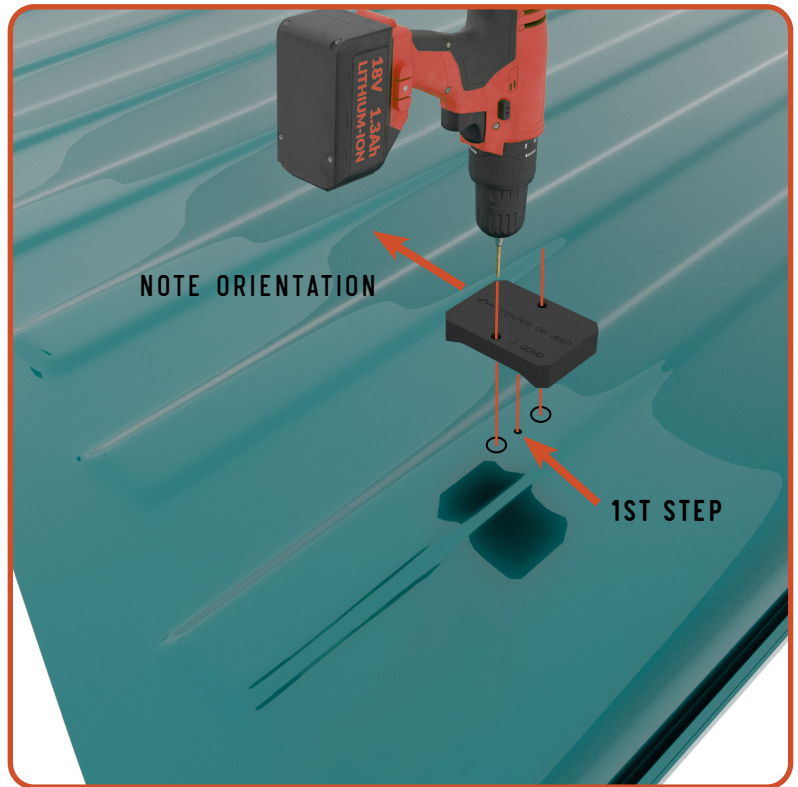
Required Components:

- 1 Drill
- 1 1/4" Drill Bit
- 1 Drill Jig 2

Install the Drill Jig into one of the holes from the outside of the roof panel. Ensure the arrow in the jig is pointing towards the centerline of the vehicle. Align the features in the jig with the rib on the roof. Drill out the remaining two holes with the 1/4" drill bit. Repeat at all 4 locations.

Note: Hold the drill as vertical as you can to ensure the best fit.

Always wear safety glasses and breathing protection when working around fiberglass

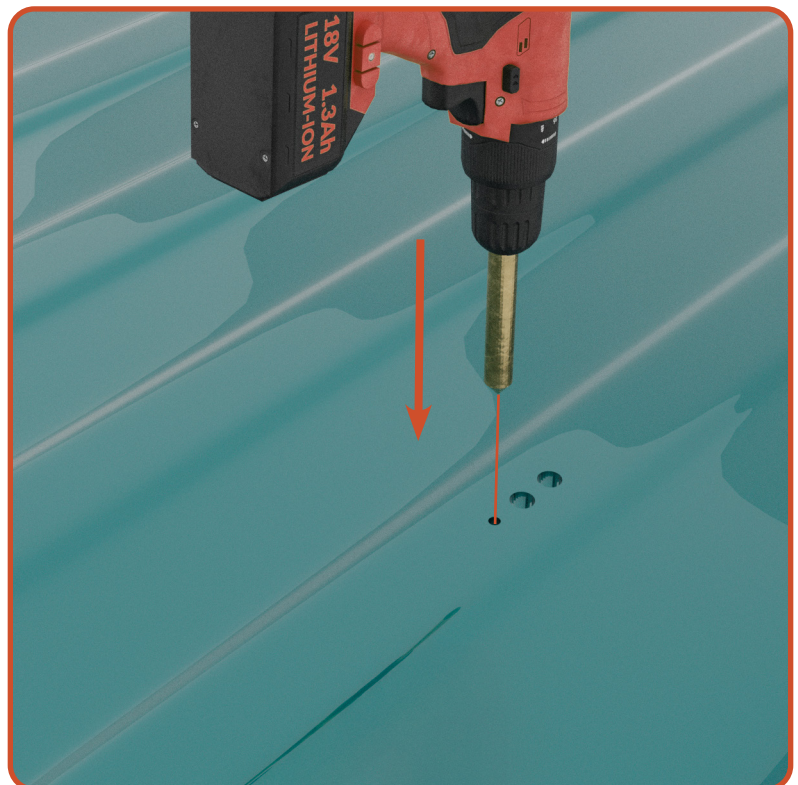


03 OVERSIZE HOLES

Required Components:

- 1 5/8" Drill Bit

Using the 5/8" drill bit, oversize all 18 holes in the roof. This accounts for some error in drilling and allows for flexibility on final installation.



INSTALLATION

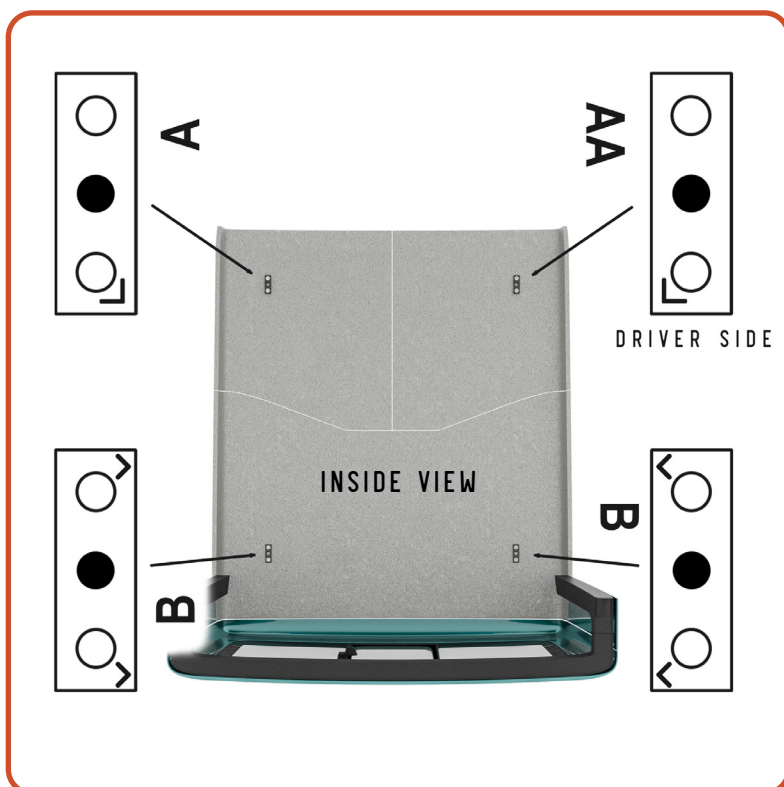
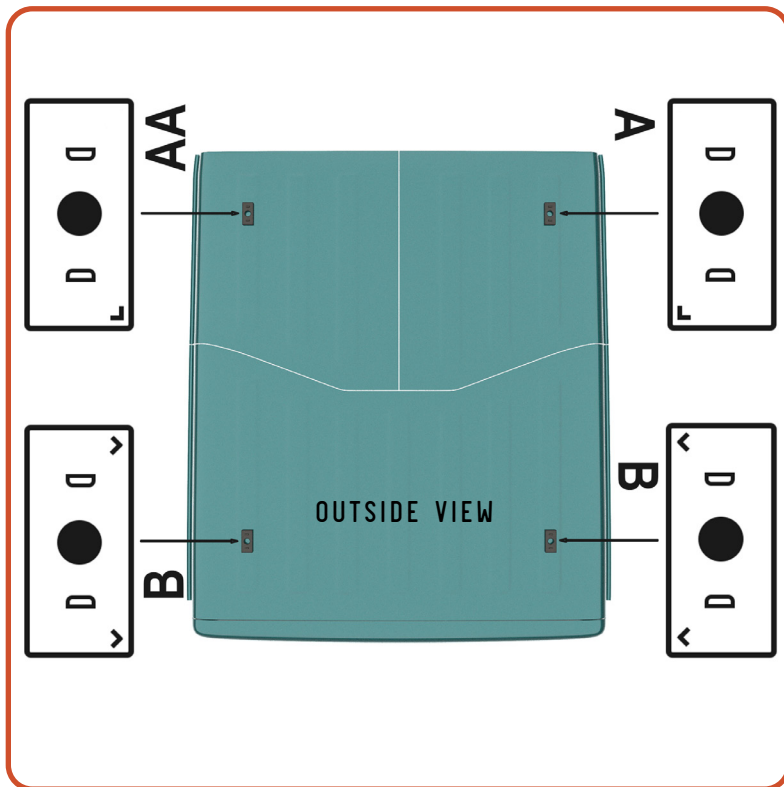
01 SANDWICH PLATES

Required Components:

- 4 TSP (A, AA, B)
- 4 BSP (A, AA, B)
- 4 1/8" Rubber Gasket
- 8 5/16"-18x3/4" Countersink Bolt

Install the sandwich plates as shown to all 4 locations with the rubber gasket on the outside of the roof. See the following page for more detail. Install countersink fasteners **leaving all hardware loose**.

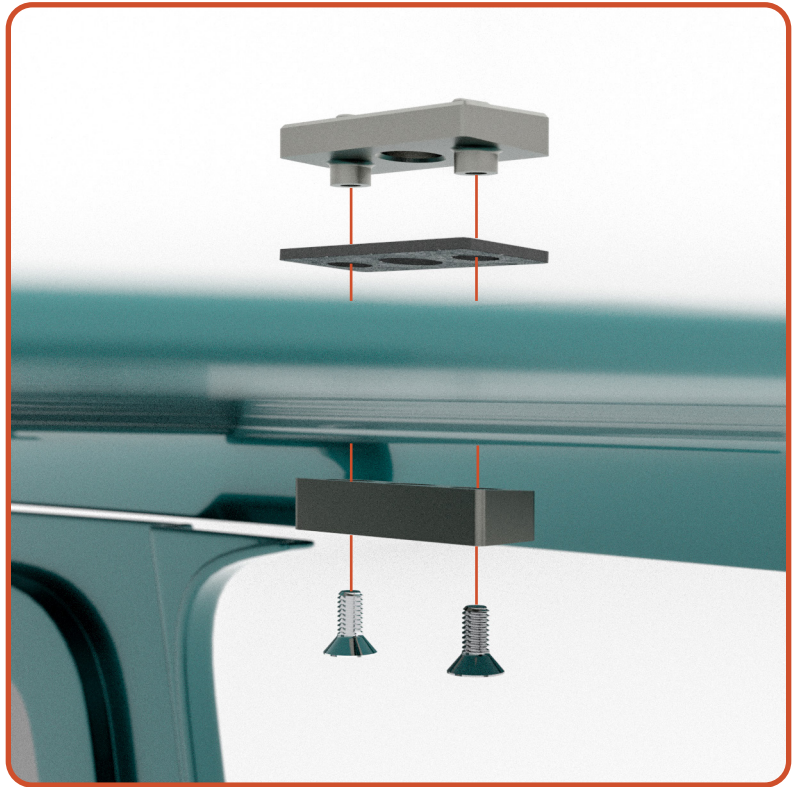
Note: For top and bottom plates all chevrons (arrows) point toward the center of the vehicle. "AA" plates are on driver corner of vehicle.



INSTALLATION

02 SANDWICH PLATES CONT

When sandwich plate install has been completed, reinstall all roof portions fully and tighten all T50 Fasteners.



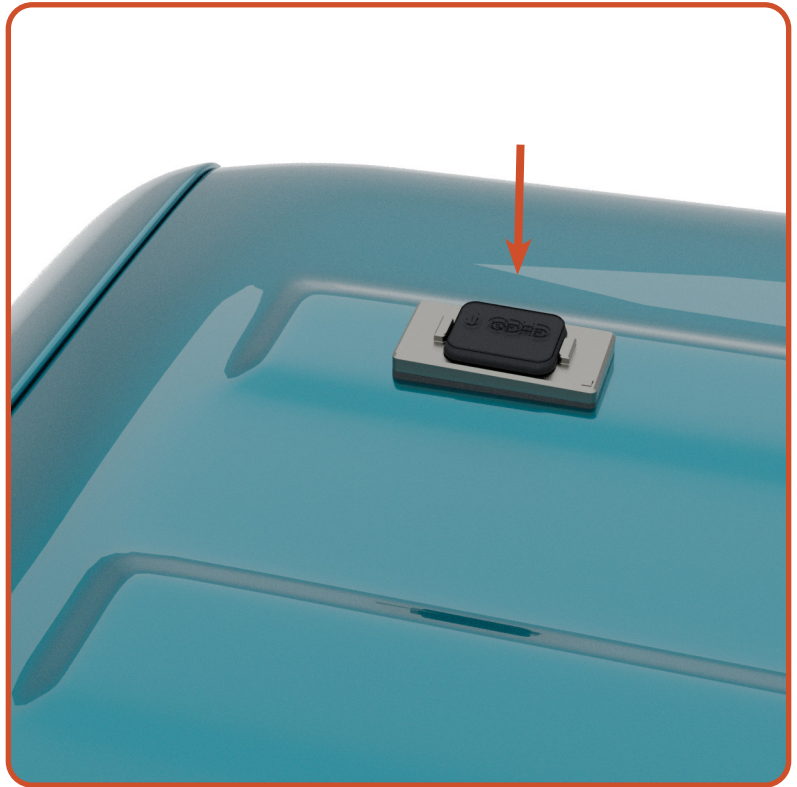
INSTALLATION

03 ALIGN SP'S

Required Components:

1 Alignment Jig

For each location at a time, install the Alignment Jig from the top of the roof and ensure it is fully seated. Next tighten the 5/16" countersink screws in all sandwich plates.



INSTALLATION

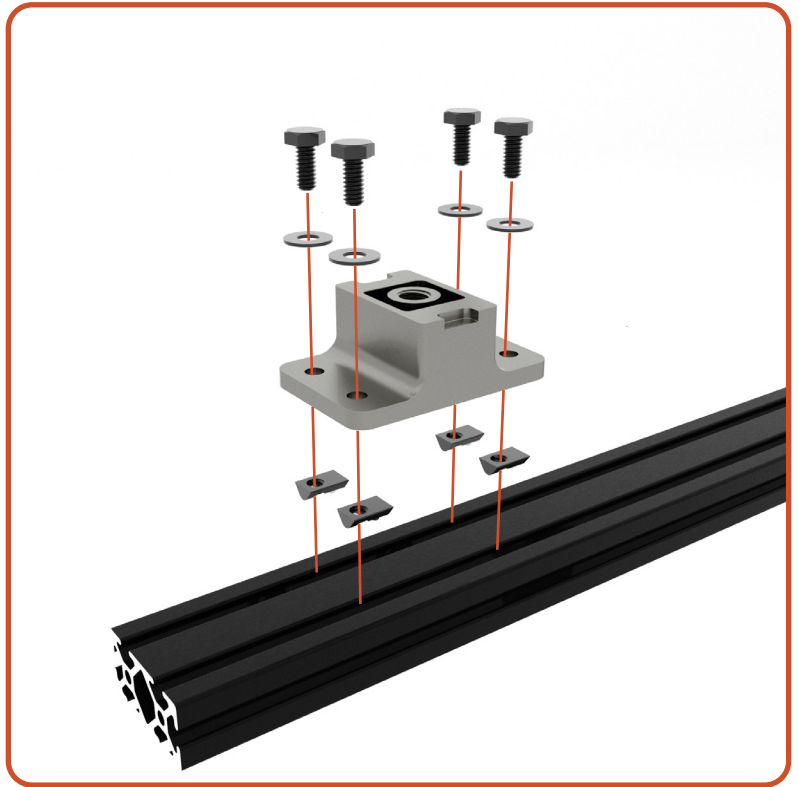
04 MOUNT CROSSBARS

Required Components:

- 2** Arch Bracket Long
- 2** Arch Bracket Short
- 2** Crossbar 56"
- 16** 1/4"-20x9/16" Hex Bolt
- 16** 1/4" Washer Silver
- 16** Tnut

Install 8x Tnuts, bolts, and washers with 2 Long Arch Brackets onto a crossbar leaving the fasteners loose. Roughly space the brackets 6" from the end of the crossbar.

Repeat the assembly one additional time, but with 2 Short Arch Brackets



INSTALLATION

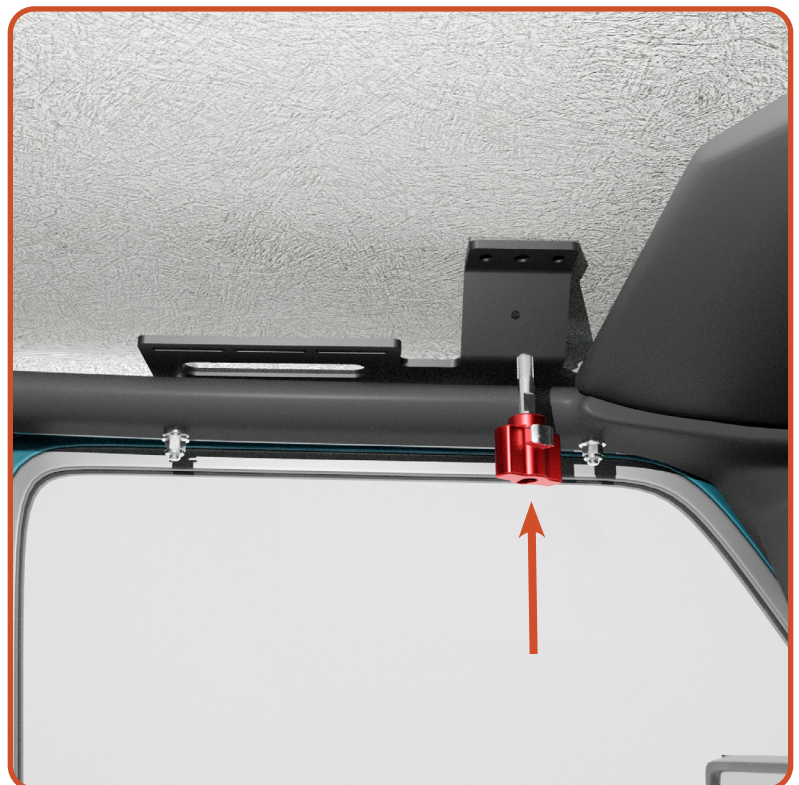
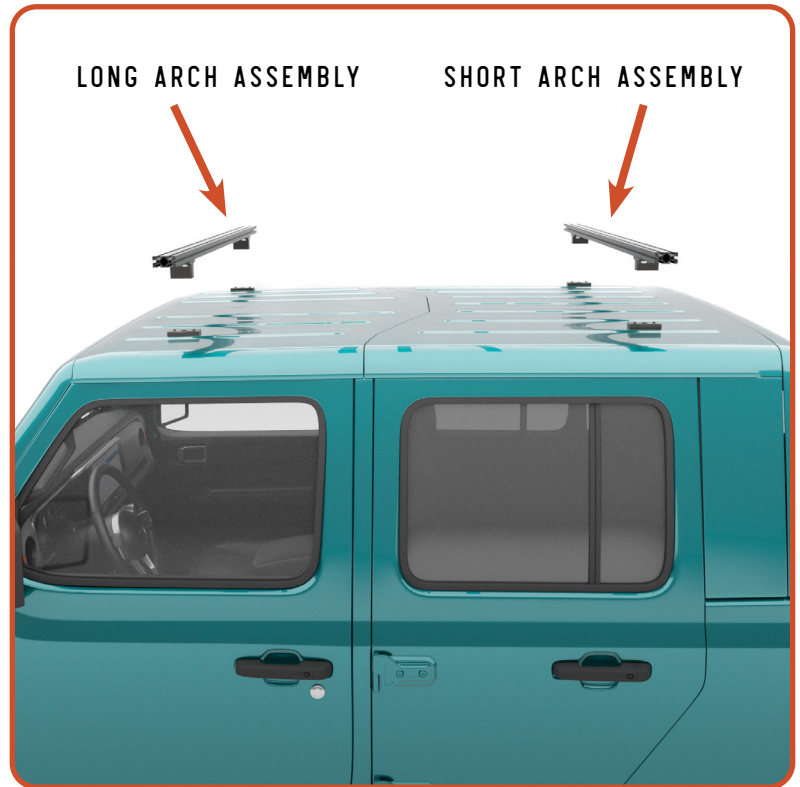
05 INSTALL CROSSBARS

Required Components:

- 1 Crossbar Assembly - Long
- 1 Crossbar Assembly - Short
- 4 Knob Assembly

Set the crossbar assemblies onto the roof with the long arch brackets going on the front and the short going on the rear. Install the knobs, with them in the extended position, from the inside of the vehicle and tighten.

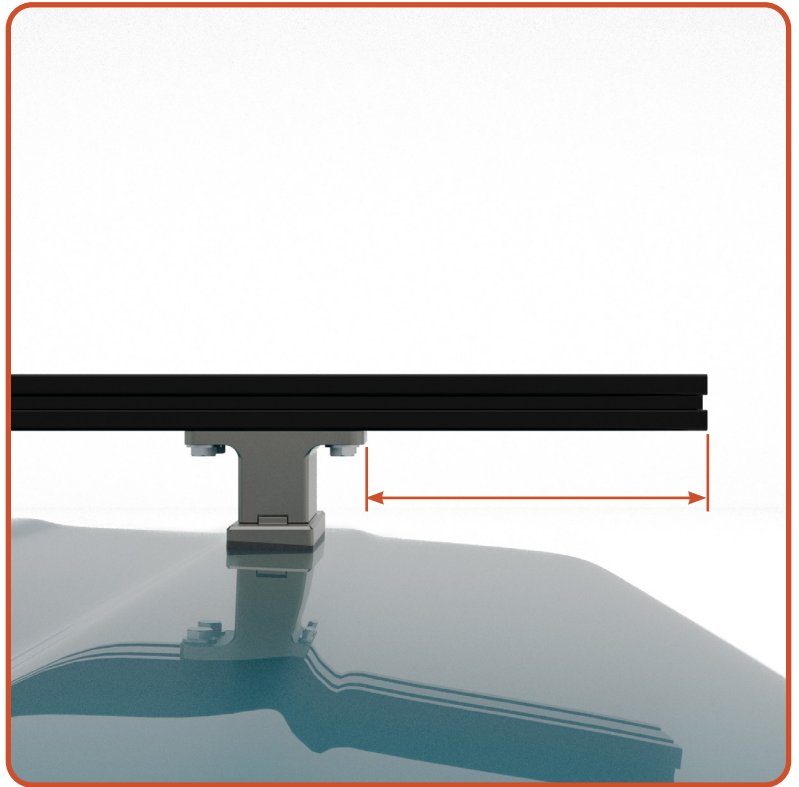
Note: Make sure the two alignment keys on each sandwich plate are indexed to the appropriate arch brackets. See next page for additional photos detail.



INSTALLATION

06 CENTER CROSSBARS

After the main support crossbar have been secured to the vehicle, use a tape measure and center all of the bars on the vehicle. Measure from the inside edge of the mount to the outside face of the crossbar and make these equal side-to-side. Tighten the hardware to the crossbar.



07 INSTALL SIDEPLATES

Required Components:

- 2 Sideplate
- 8 1/4"-20x1" SB Bolt
- 8 1/4" Washer

Install sideplates to the crossbars with 4x of each washer and bolt per side.



INSTALLATION

11 INSTALL FAIRING

Required Components:

- 1** Fairing Assembly
- 4** 1/4"-20x1" SB Bolt
- 4** 1/4" Washer

Position the wind fairing in line with the diagonal slot at the front of the rack. Align the bottom of the fairing with the tip of the roof rack and secure it using bolts and washers.

The fairing can be adjusted up or down if wind noise is detected. Small adjustments make a big difference here.



12 INSTALL CROSSBARS

Required Components:

- 4** Crossbar 56"
- 16** 1/4"-20x1" SB Bolt
- 16** 1/4" Washer

Install all of the remaining crossbars to the rack system. Space evenly or position according to your load requirements using the arrows as a target location.



CONVERSION

01 NO-ROOF MODE

To run the rack without the fiberglass roof panels, first remove the front knobs and remove the front rack portions. Second, remove the rear knobs and rack.

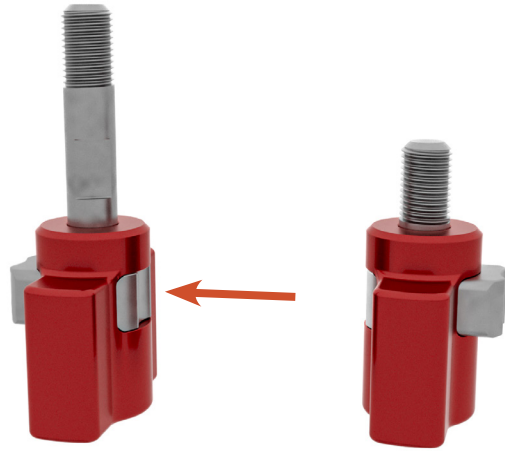
Remove the freedom panels and rear fiberglass roof section. Reinstall the rack portions to sit on the mounts. Convert the knobs to the short position and engage the locks. Install all knobs.



ADDITIONAL NOTES

KNOB NOTES

When rack is attached with the roof installed the lock button on the knob can be in either position. The lock must be engaged to hold the knob in the short position when running the rack without the roof.



TROUBLESHOOTING

If you have trouble aligning the knob into the arch brackets or it tries to crossthread: loosen the arch from the crossbar and repeat the steps for aligning the sandwich plates with the alignment pin. When viewed from above, the hole from the top sandwich plate should be concentric with the mount below.

