



Parts Included

Quantity	Item Description	Part#
1	Left Body Mount	DK-811937-A1300
1	Right Body Mount	DK-811937-A1400
1	Bushing Kit	DK-927911
2	Frame Plate	DK-811937-A1201
2	7/16-20x5" Bolt	91257A707
2	7/16 Large Washer	G8-W67USS-ZY
2	7/16 Small Washer	G8-W64SAE
2	7/16-20 Nylock Nut	G8-NN1400-ZY
2	7/16-20 Non-Locking Nut	94895A820

Please check that all items are present before installation. If for any reason, there is an item or items missing send an email to sales@dirtking.com with proof of purchase and a picture of parts received.



Before installing, read all instructions. Only certified mechanics should install Dirt King products. Mandatory wheel alignment and ADAS calibration at certified facilities are required after suspension modifications. Failure to do so can lead to handling problems and safety risks. Dirt King is not responsible for damages from improper installation or misuse. Adhere to your vehicle manufacturer's recommendations. For more information, visit <https://dirtking.com/pages/disclaimer>



1. Raise the vehicle and prepare for installation

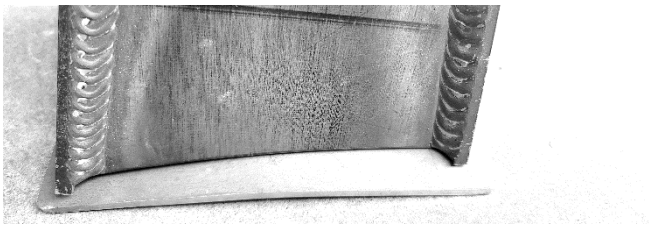
- a. Disconnect the battery's positive and negative terminals.
- b. Raise the vehicle and safely secure on approved stands.
- c. Remove the front wheels.



2. Unbolt cab from chassis

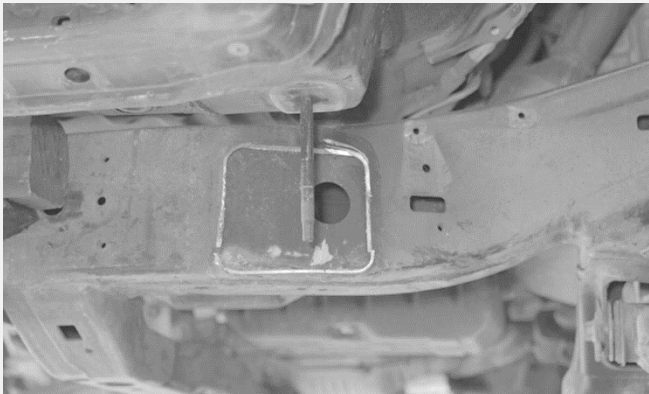
- a. Remove fender splash guards to the left and right of the upper control arm and mud guards, if applicable.
- b. Remove body mount hardware at the core support and main cab. On 4Runner or FJ applications, remove rear body mount hardware as well.
- c. Measure the cab location in relation to the frame. You can measure from the floor to the cab. Record the measurement.
- d. Slowly lift the cab off the mounts.
NOTE: Do not lift the cab to the point of lifting the frame off the stands. This step is only to gain more room for tool and welder access.
- e. If possible, insert a block of wood or a similar object between the cab and frame for safety. Be careful not to pinch any harness wires or lines in the process.





3. Weld plate to body mount.

- a. Center the body mount plate on the body mount and weld. Some slight bending of the plate may be required for proper fitment.
- b. Ensure you fully weld all around the body mount and plate.
- c. Allow to cool before handling.



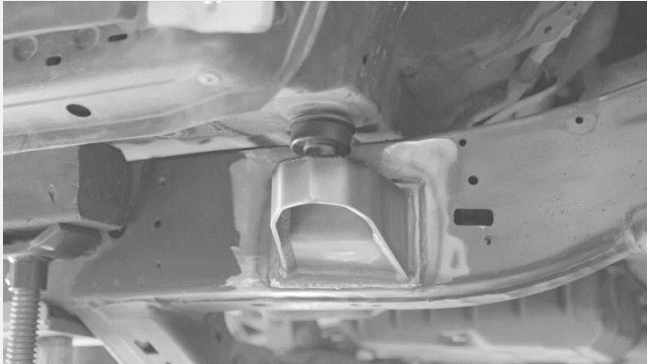
4. Remove body mount

- a. Safely cover any wires or material that could be damaged by weld heat or spatter.
- b. Using an appropriate cutting tool, cut the factory body mount off the chassis. Be careful not to cut into the frame or cab. Use caution when using tools that emit flames or sparks. Having access to a fire extinguisher nearby is highly recommended.
- c. Grind the area smooth and prep for welding. Be cautious of sparks on vehicle components.



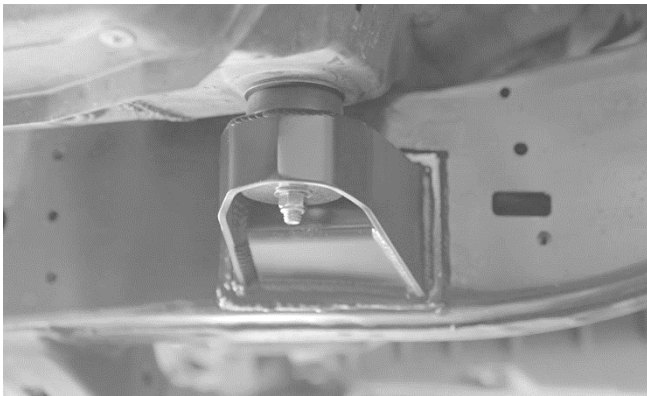
5. Locate body mount.

- a. Slowly lower the cab to the previously recorded dimension.
- b. Install the Dirt King body mount.
NOTE: The small bushing goes on top with the body washer, and the large bushing goes on the bottom with the body washer.
- c. For Tacoma, use OEM hardware.
- d. For 4Runner and FJ, use the new provided hardware with a non-locking nut for this step. Place the large washer on top and the small washer on the bottom of the bolt. Snug the hardware.
- e. Place the ground clamp from the welder directly onto the body mount. Tack the body mount to the frame. Tack welds should be strong enough to support the body. Inspect and measure again to confirm the cab location is the same as previously recorded. Readjust and repeat if necessary.



6. Weld body mount

- a. Begin by ensuring that surrounding areas and components are protected from weld heat and spatter.
- b. Remove the body mount hardware and lift the cab as performed in Step 2.
- c. Fully weld the body mount to the frame.
- d. Paint all exposed bare metal. Allow the paint to cure per the manufacturer's instructions.

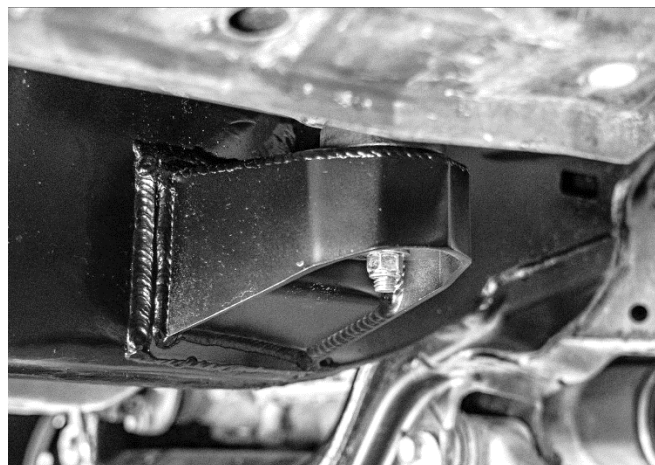


7. Install cab to body mount

- a. Lower the cab to the body mount.
- b. For Tacoma with OEM hardware, torque to spec: **35ft lbs.**
- c. On 4 Runner and FJ models, install new hardware with the provided Nyloc nut. Torque to spec: **35ft lbs.**
- d. Reinstall the core support body mount hardware. Torque to spec: **35ft lbs.**
- e. On 4 Runner and FJ applications, torque the rear cab body mount hardware to spec: **35ft lbs.**

8. Review your work and repeat the steps to the other side of the vehicle.

- a. Confirm that everything is installed correctly. Reconnect the battery terminals.
- b. Reinstall the wheels and torque the lug nuts according to your wheel manufacturer's specifications.
- c. Check tire clearance. Some models may require additional fender trimming to ensure proper clearance.



For warnings and disclaimers visit <https://dirtking.com/pages/disclaimer>.