



SHERPA
PREMIUM RACK SYSTEMS

THE FREMONT 5G

RACK SYSTEM INSTALL GUIDE

HARDWARE CHECKLIST

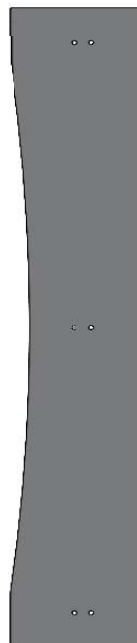
8
1/4"-20
(1-3/4") HEX



20
1/4"-20
TNUT



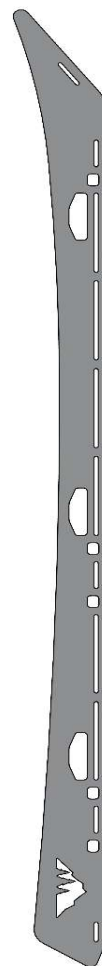
1
WIND FAIRING



8
CROSSBARS



2
SIDEPLATES



32
1/4"-20
(1") SB



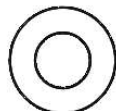
40
1/4" FLAT
WASHER - BLACK



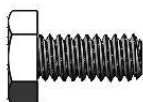
6
1/4"-20
(1/2") SB



12
1/4" FLAT
WASHER - SILVER



12
1/4"-20
(9/16") HEX-
SILVER



8
1/4"-20
FLANGED LOCKNUT



2
1/4"-20
(9/16") HEX-
BLACK



8
M6 BONDED
WASHER



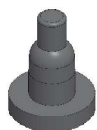
2
ROOF PLUG 1



8
SPACERS



2
ROOF PLUG 2



2
FRONT
MOUNTS
PN: 10175
& 10176



2
MIDDLE
MOUNTS
PN: 10177
& 10178



2
REAR
MOUNTS
PN: 10179
& 10180



2
FRONT RUBBER
SPACERS



2
MID RUBBER
SPACERS



2
REAR RUBBER
SPACERS

1
Name Plate

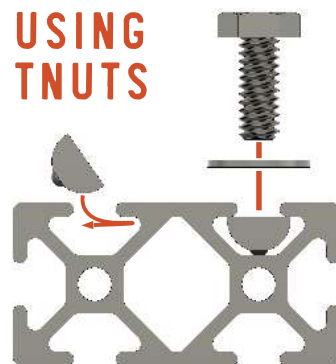


BEFORE YOU START

The installation of this rack requires you to drop your headliner. A guide to removing the stock roof rack and headliner is available on our YouTube page. If you are not comfortable with this please contact a reputable installer.

The below assembly images may differ slightly in appearance from actual product.

USING TNUTS



ROOF DIAGRAM

01 PLUG LOCATIONS

Required Components:

2 #1 Roof Plugs


2 #2 Roof Plugs



The Forester has several roof holes that will not be used during the install. 4 of these holes will need to be sealed with provided rubber plugs. There are two different sizes of plugs.



Locations marked in **ORANGE** receive #1 Roof Plug and the **GREEN** will get the #2 Roof Plug.

The **TAN** dots mark holes that will be used during the mounting process

Note: 19-21 Foresters will not have extra holes that need plugged.

 Mounting Hole

 #1 Roof Plug 

 #2 Roof Plug 

INSTALLATION TIP

To make installing the plugs easier, use soapy water as the lubricant. Alternatively, you can pull the plugs from the bottom by their tabs to help seat them.



MOUNTS

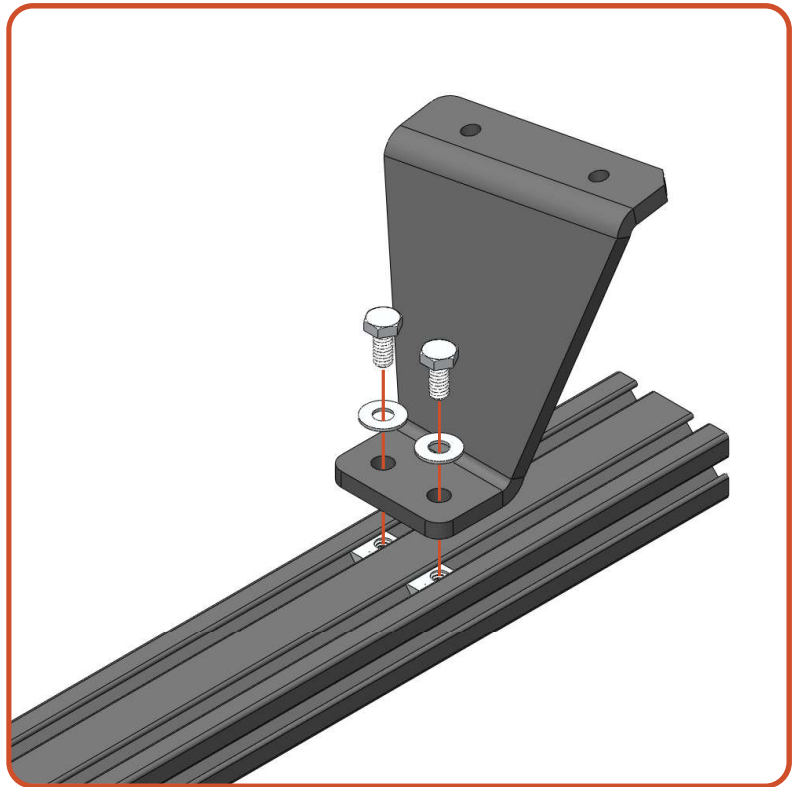
01 MOUNT ASSEMBLY

Required Components:

- 1 Crossbar
- 2 Front Mounts
- 4 1/4"-20 x 9/16" Hex Bolts
- 4 1/4" Flat Washers
- 4 Tnuts

Drop 4 tnuts into the slots on the crossbar and line them up with the holes in mounts. Secure top of the mounting bracket to the crossbar leaving the hardware loose so that it can be adjusted during a later step.

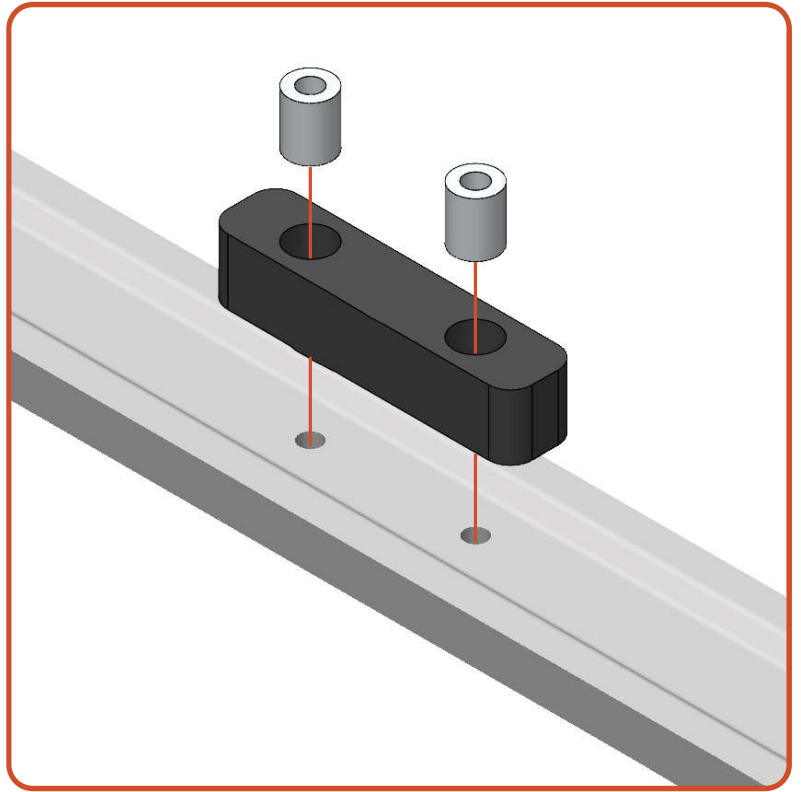
Note: Repeat this process for all relevant mounts (Front, Middle, Rear) Reference the **Hardware Checklist** to identify mount location.



SPACER ASSEMBLY

01 SPACER INSTALL TIP

Insert the stainless spacers into the rubber spacer and align the spacer over the mounting holes on the roof of the vehicle.



MOUNT INSTALL

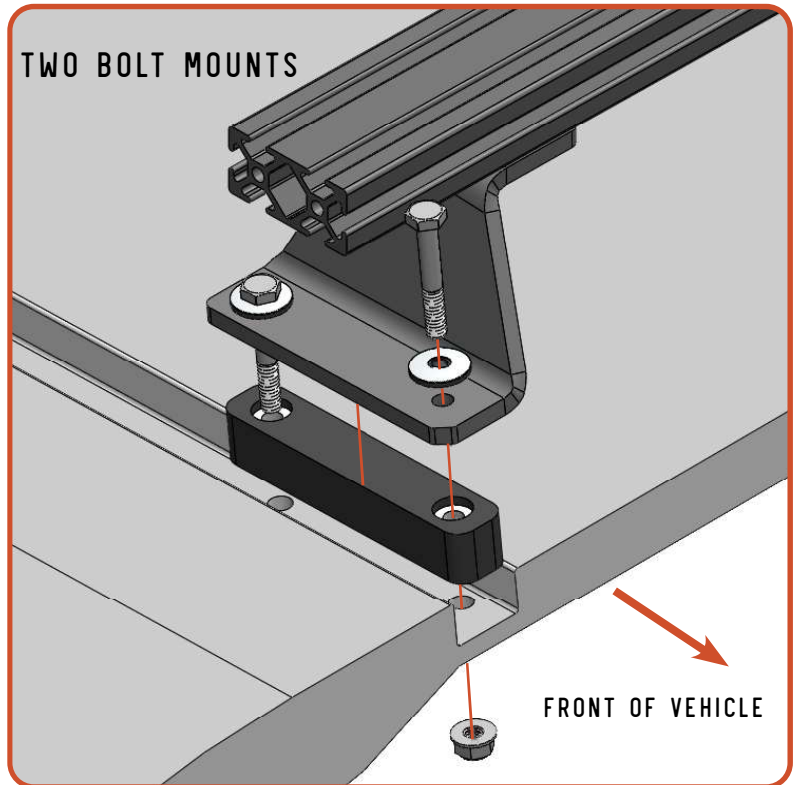
01 INSTALL ON VEHICLE

Required Components:

- 4** 1/4"-20 x 1 3/4" Hex Bolts
per mount assembly
- 4** M6 Bonded Washers
per mount assembly
- 4** 1/4"-20 Flanged Locknuts
per mount assembly
- 2** Front Rubber Spacers
per mount assembly

Position the mounting bracket over the rubber spacer and secure them with bolts and bonded washers passed through the bracket, rubber, and into the holes in the roof. Secure them with the a provided locknut on the inside of the vehicle.

Note: Chamfered corner on the lower part of the mount faces the front of the vehicle.



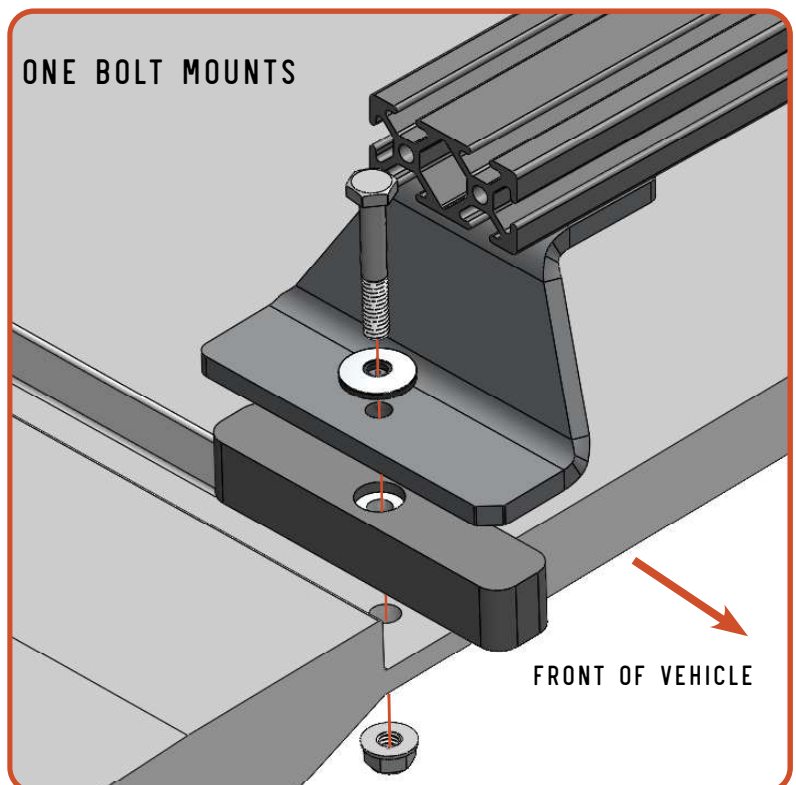
AND/OR

02 INSTALL ON VEHICLE

Required Components:

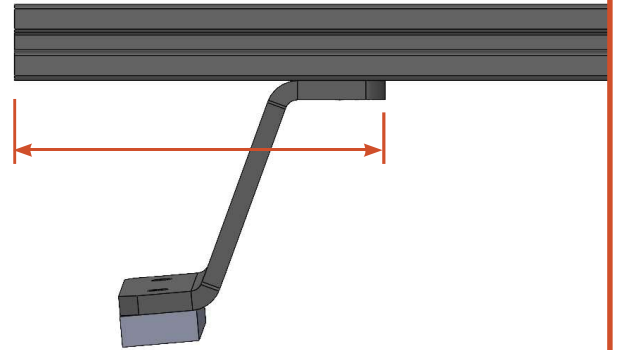
- 2** 1/4"-20 x 1 3/4" Hex Bolts
per mount assembly
- 2** M6 Bonded Washers
per mount assembly
- 2** 1/4"-20 Flanged Locknuts
per mount assembly
- 2** Front Rubber Spacers
per mount assembly

The bonded washers should compress and become flat, but not concave. Do not over tighten these mounts.



03 CENTER THE MOUNTS

After the main support crossbar have been secured to the vehicle, use a tape measure and center all of the bars on the vehicle. Measure from the inside edge of the mount to the outside face of the crossbar and make these equal side-to-side. Tighten the hardware to the crossbar.



SIDEPLATES

01 SIDEPLATE INSTALL

Required Components:

- 2 Sideplates
- 4 1/4"-20x1" Socket Bolts
per mount assembly
- 4 1/4" Washers
per mount assembly

Align the small slots in the sideplates with the ends of the main support crossbars. Secure them using bolts and washers. Leave the bolts loose enough to move the sideplate to the position that matches the curvature of the vehicle.

Once the rack is positioned correctly, tighten down all of the hardware for the sideplates.



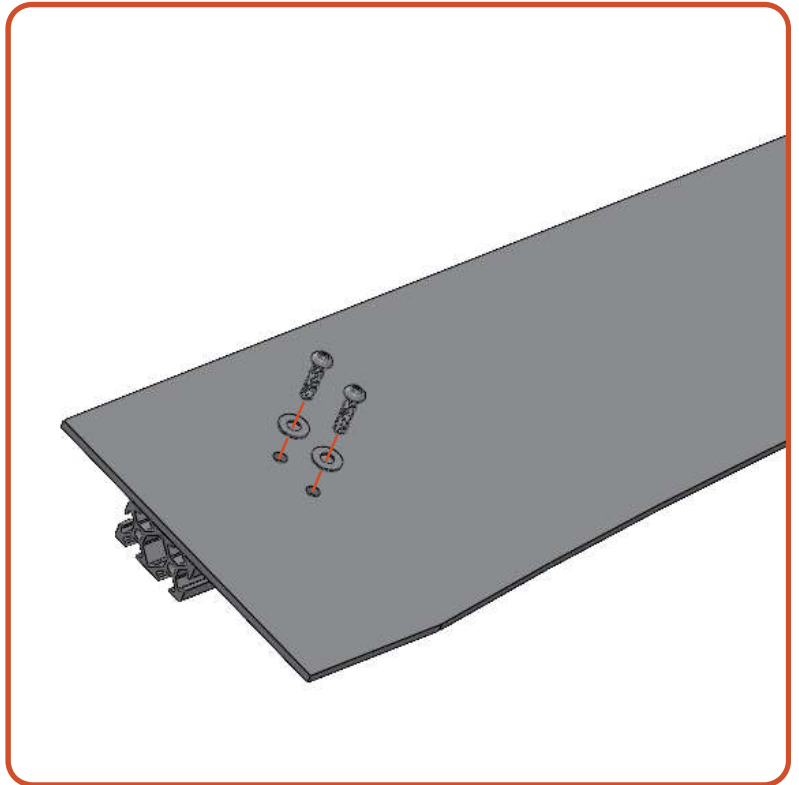
WIND FAIRING

01 FAIRING ASSEMBLY

Required Components:

- 1 Crossbar
- 6 1/4"-20x1/2" Socket Bolts
- 6 1/4" Flat Washers
- 6 Tnuts

Drop 6 tnuts into the slots on the crossbar and line them up with the holes in the fairing. Secure with 6 bolts and washers.



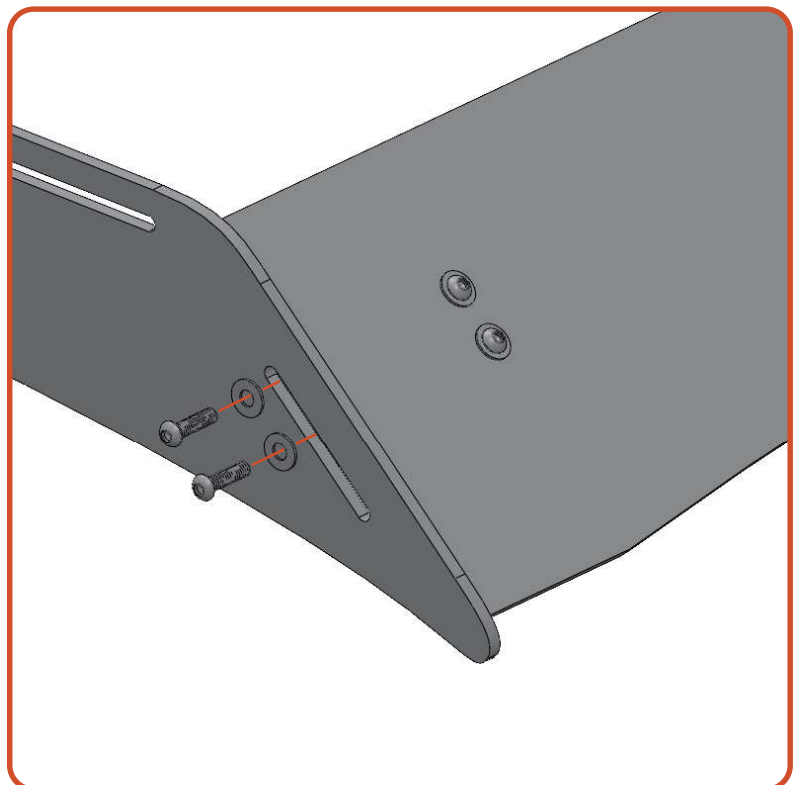
02 FAIRING INSTALLATION

Required Components:

- 4 1/4"-20x1" Socket Bolts
- 4 1/4" Flat Washers

Position the wind fairing in line with the diagonal slot at the front of the rack. Align the bottom of the fairing with the tip of the roof rack and secure it using bolts and washers.

The fairing can be adjusted up or down if wind noise is detected. Small adjustments make a big difference here.



FREMONT ASSEMBLY VISUAL



01 INSTALL CROSSBARS

Required Components:

Remaining Crossbars

4 1/4"-20 x 1" Socket Bolts
per crossbar

4 1/4" Flat Washers
per crossbar

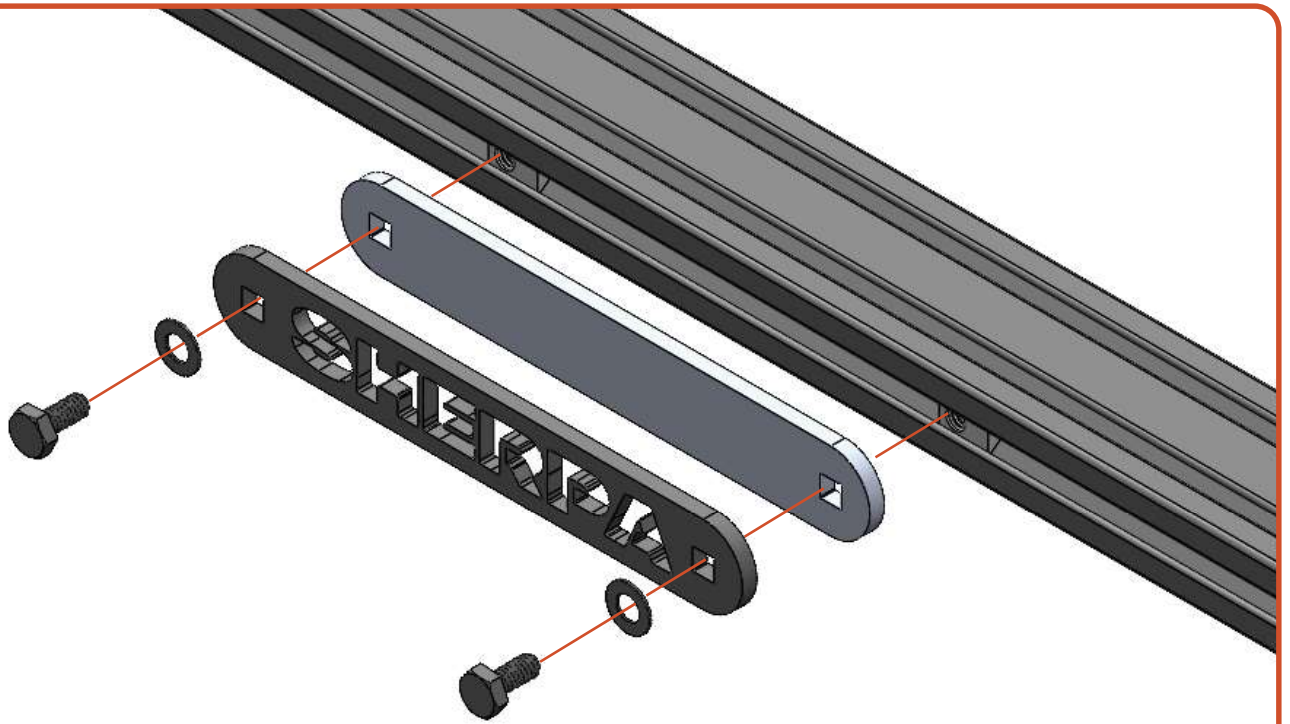
Secure all of the remaining crossbars to the rack system. Space evenly or position according to your load requirements.

SHERPA NAME PLATE

Required Components:

- 2 1/4"-20 x 9/16" Hex Bolts
- 2 1/4"-20 Nuts
- 2 1/4" Flat Washers
- 1 Sherpa Name Plates
- 1 Name Plate Backers

Place the nuts into the rear most crossbar on the rack. Using the 1/4"-20 x 0.75" socket buttons, and 1/4" flat washers attach the name plate and name plate backer to the cross bar.



NOW GET OUT THERE AND
EXPLORE.

WELCOME TO THE SHERPA FAMILY!
MAKE SURE TO FOLLOW US ON YOUR SOCIALS AND TAG US IN YOUR ADVENTURES.

All products built and designed by Sherpa Equipment Company are intended for off-road use and should be assembled, installed, and used according to Sherpa Equipment Company's recommendations. Sherpa Equipment Company's products should be used safely with good judgment towards others and surroundings.

By installing Sherpa Equipment Company's products on your vehicle you assume all liability. Sherpa Equipment Company will not be held liable for damages or loss associated with the installation or use of its products. It is recommended that you inspect your roof rack within the first 100 miles of installation and every 500 miles after.



SHERPA
PREMIUM RACK SYSTEMS

THE FREMONT 6G

RACK SYSTEM INSTALL GUIDE

HARDWARE CHECKLIST

10
1/4"-20
(1-3/4") HEX



20
1/4"-20
TNUT



1

WIND FAIRING



8

CROSSBARS



2

SIDEPLATES



32
1/4"-20
(1") SB



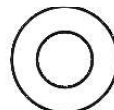
40
1/4" FLAT
WASHER - BLACK



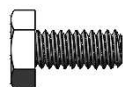
6
1/4"-20
(1/2") SB



12
1/4" FLAT
WASHER - SILVER



12
1/4"-20
(9/16") HEX-
SILVER



10
1/4"-20
FLANGED LOCKNUT



2
1/4"-20
(9/16") HEX-
BLACK



10
M6 BONDED
WASHER



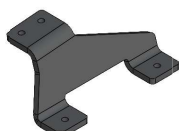
10
SPACERS



2
FRONT
MOUNTS
PN: 10191
& 10192



2
MIDDLE
MOUNTS
PN: 10193
& 10194



2
REAR
MOUNTS
PN: 10195
& 10196



2
FRONT RUBBER
SPACERS



2
MID RUBBER
SPACERS



4
REAR RUBBER
SPACERS

1

Name Plate

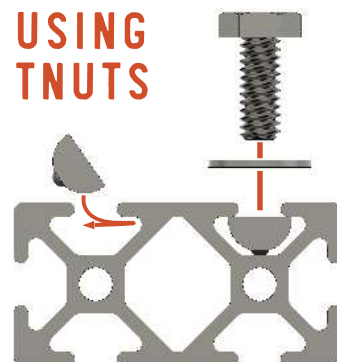


BEFORE YOU START

The installation of this rack requires you to drop your headliner. A guide to removing the stock roof rack and headliner is available on our YouTube page. If you are not comfortable with this please contact a reputable installer.

The below assembly images may differ slightly in appearance from actual product.

USING TNUTS



MOUNTS

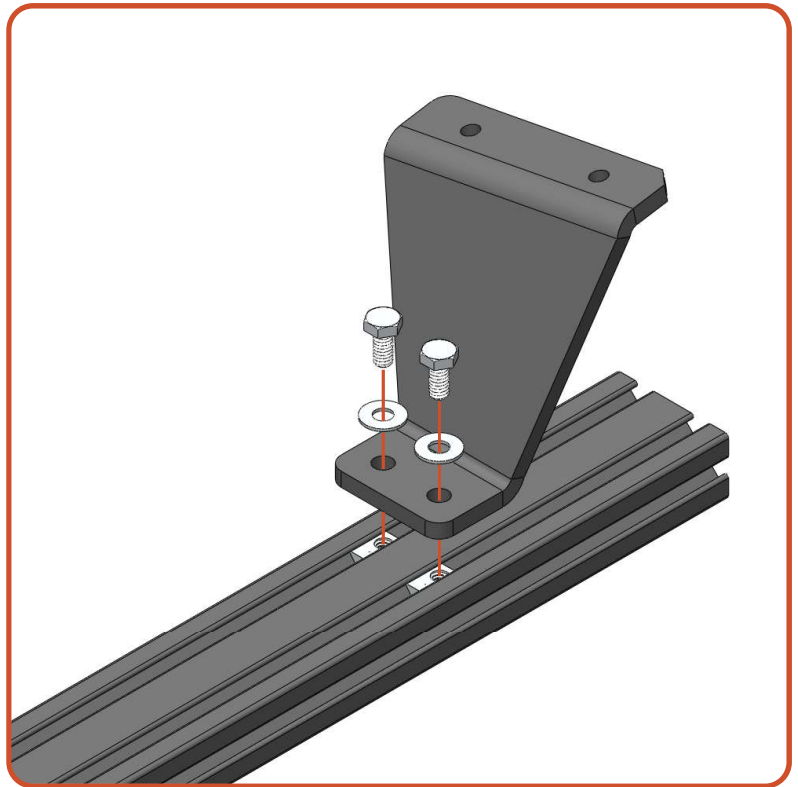
01 MOUNT ASSEMBLY

Required Components:

- 1 Crossbar
- 2 Front Mounts
- 4 1/4"-20 x 9/16" Hex Bolts
- 4 1/4" Flat Washers
- 4 Tnuts

Drop 4 tnuts into the slots on the crossbar and line them up with the holes in mounts. Secure top of the mounting bracket to the crossbar leaving the hardware loose so that it can be adjusted during a later step.

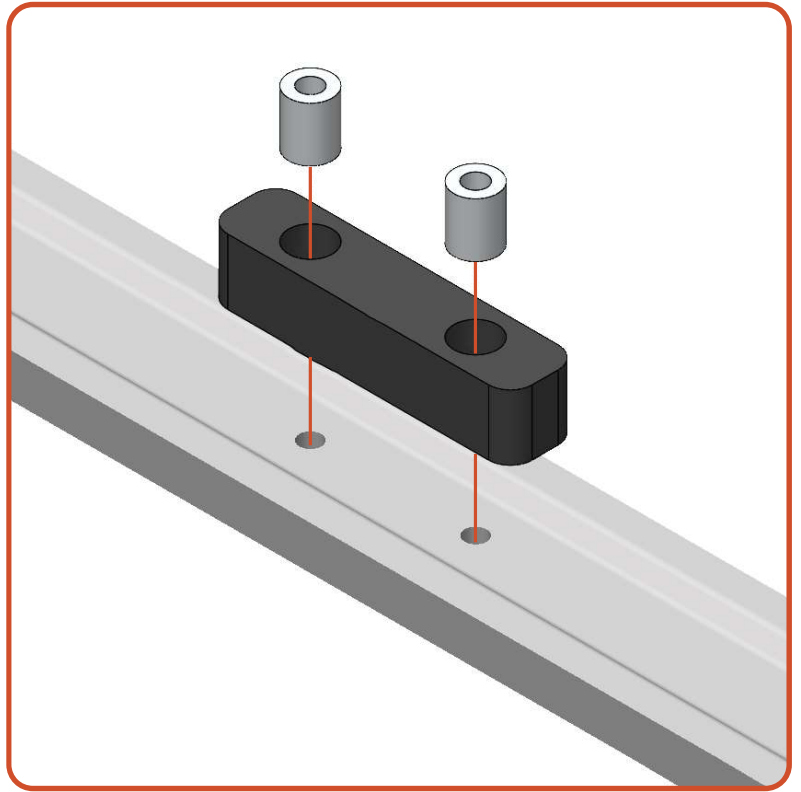
Note: Repeat this process for all relevant mounts (Front, Middle, Rear) Reference the **Hardware Checklist** to identify mount location.



SPACER ASSEMBLY

01 SPACER INSTALL TIP

Insert the stainless spacers into the rubber spacer and align the spacer over the mounting holes on the roof of the vehicle.



MOUNT INSTALL

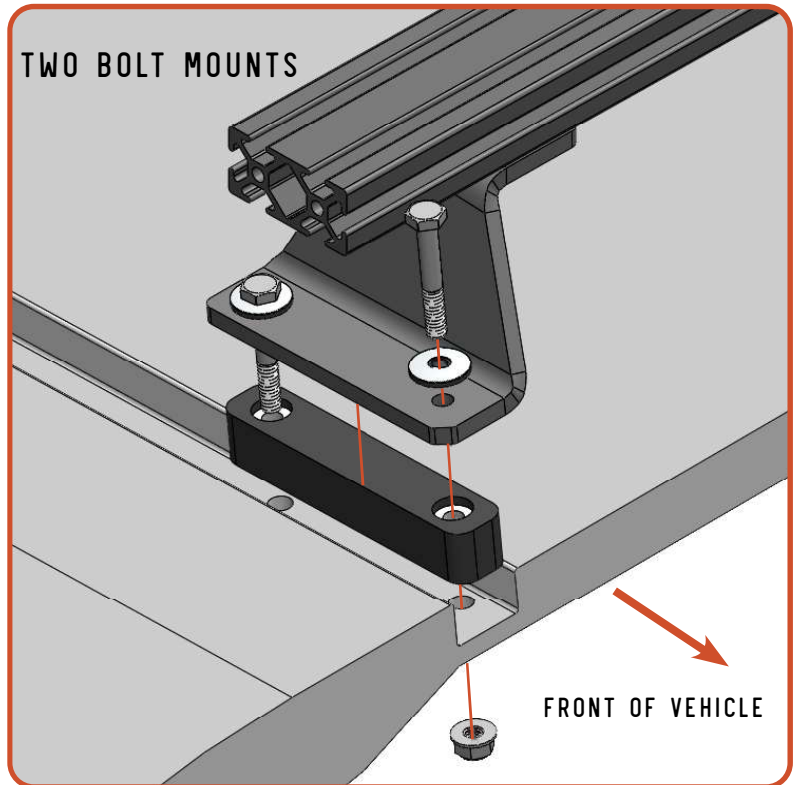
01 INSTALL ON VEHICLE

Required Components:

- 4 1/4"-20 x 1 3/4" Hex Bolts
per mount assembly
- 4 M6 Bonded Washers
per mount assembly
- 4 1/4"-20 Flanged Locknuts
per mount assembly
- 2 Front Rubber Spacers
per mount assembly

Position the mounting bracket over the rubber spacer and secure them with bolts and bonded washers passed through the bracket, rubber, and into the holes in the roof. Secure them with the a provided locknut on the inside of the vehicle.

Note: Chamfered corner on the lower part of the mount faces the front of the vehicle.



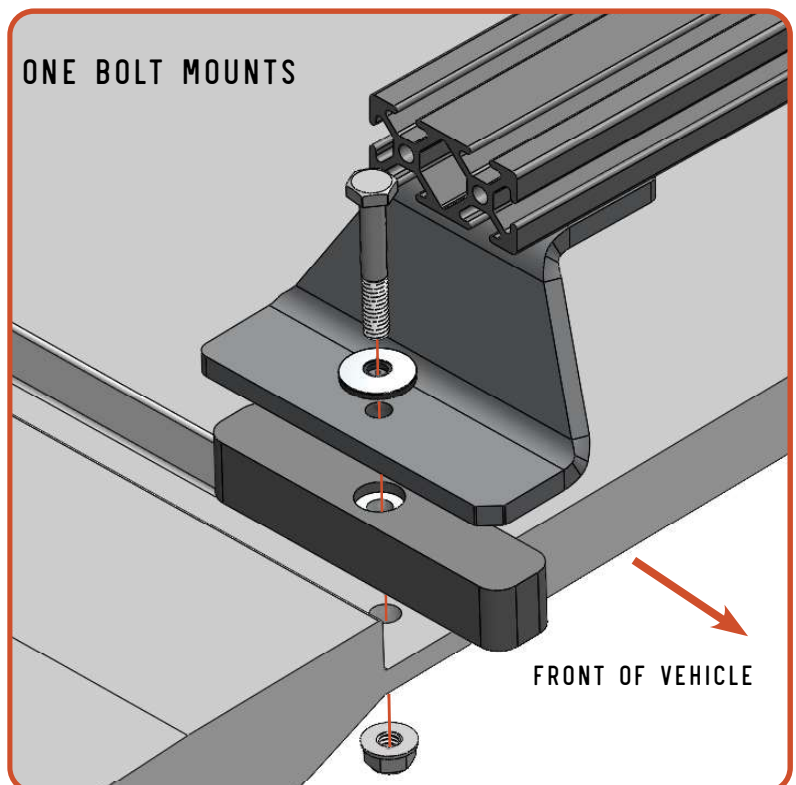
AND/OR

02 INSTALL ON VEHICLE

Required Components:

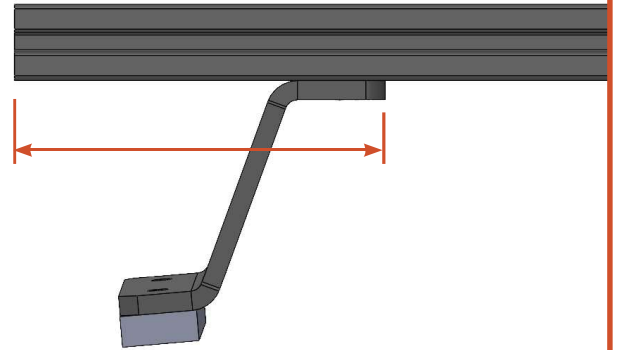
- 2 1/4"-20 x 1 3/4" Hex Bolts
per mount assembly
- 2 M6 Bonded Washers
per mount assembly
- 2 1/4"-20 Flanged Locknuts
per mount assembly
- 2 Front Rubber Spacers
per mount assembly

The bonded washers should compress and become flat, but not concave. Do not over tighten these mounts.



03 CENTER THE MOUNTS

After the main support crossbar have been secured to the vehicle, use a tape measure and center all of the bars on the vehicle. Measure from the inside edge of the mount to the outside face of the crossbar and make these equal side-to-side. Tighten the hardware to the crossbar.



SIDEPLATES

01 SIDEPLATE INSTALL

Required Components:

- 2 Sideplates
- 4 1/4"-20x1" Socket Bolts
per mount assembly
- 4 1/4" Washers
per mount assembly

Align the small slots in the sideplates with the ends of the main support crossbars. Secure them using bolts and washers. Leave the bolts loose enough to move the sideplate to the position that matches the curvature of the vehicle.

Once the rack is positioned correctly, tighten down all of the hardware for the sideplates.



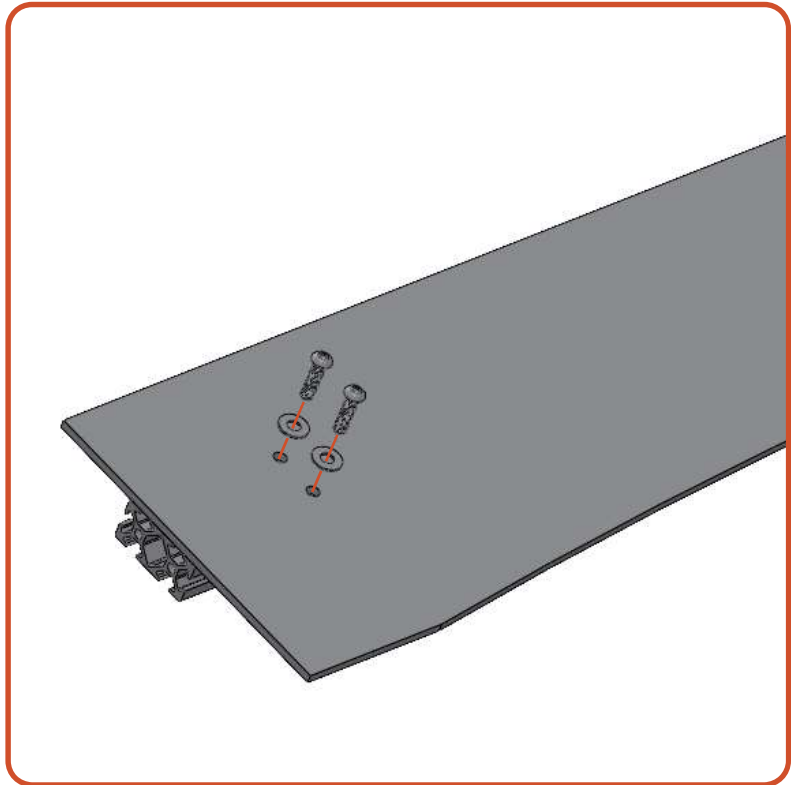
WIND FAIRING

01 FAIRING ASSEMBLY

Required Components:

- 1 Crossbar
- 6 1/4"-20x1/2" Socket Bolts
- 6 1/4" Flat Washers
- 6 Tnuts

Drop 6 tnuts into the slots on the crossbar and line them up with the holes in the fairing. Secure with 6 bolts and washers.



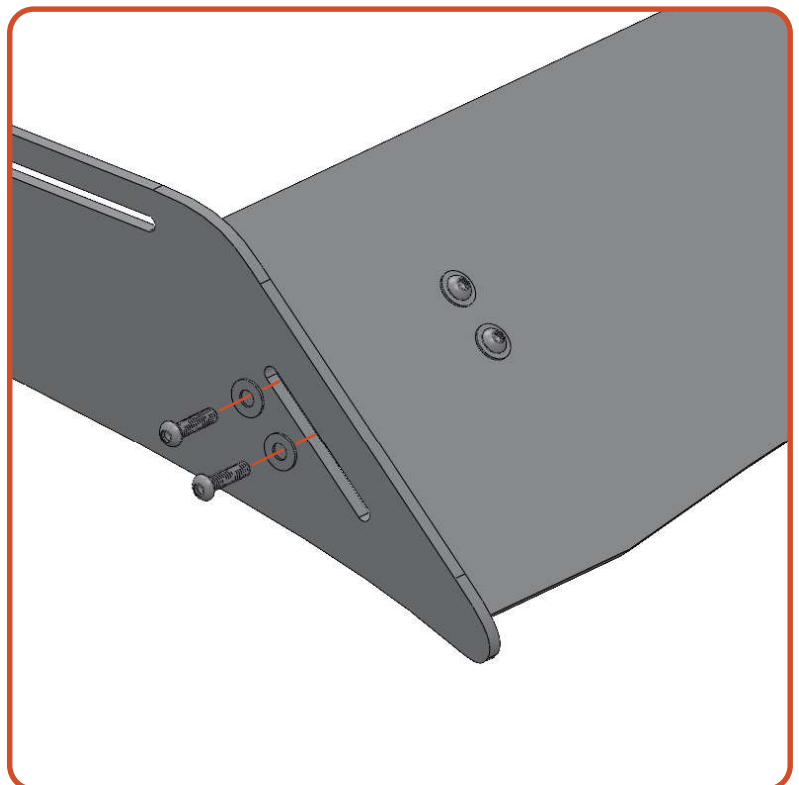
02 FAIRING INSTALLATION

Required Components:

- 4 1/4"-20x1" Socket Bolts
- 4 1/4" Flat Washers

Position the wind fairing in line with the diagonal slot at the front of the rack. Align the bottom of the fairing with the tip of the roof rack and secure it using bolts and washers.

The fairing can be adjusted up or down if wind noise is detected. Small adjustments make a big difference here.



FREMONT ASSEMBLY VISUAL



01 INSTALL CROSSBARS

Required Components:

Remaining Crossbars

4 1/4"-20 x 1" Socket Bolts

per crossbar

4 1/4" Flat Washers

per crossbar

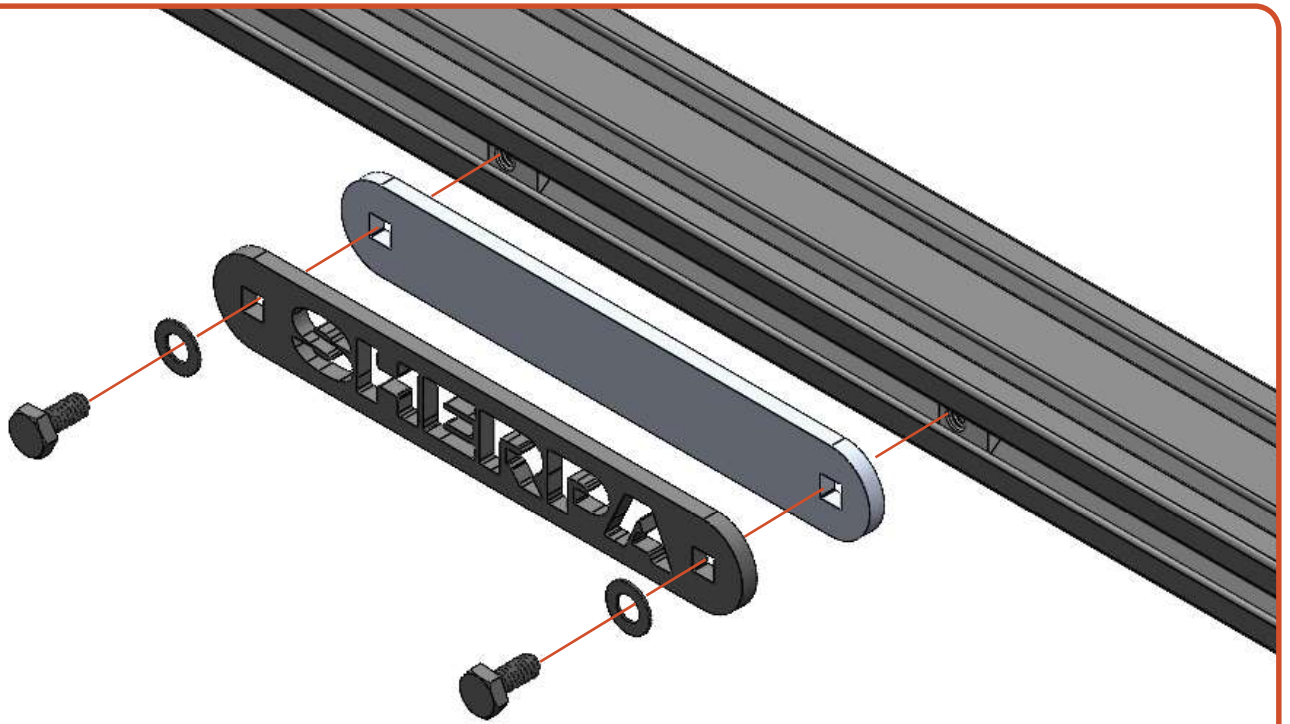
Secure all of the remaining crossbars to the rack system. Space evenly or position according to your load requirements.

SHERPA NAME PLATE

Required Components:

- 2** 1/4"-20 x 9/16" Hex Bolts
- 2** 1/4"-20 Tnuts
- 2** 1/4" Flat Washers
- 1** Sherpa Name Plates
- 1** Name Plate Backers

Place the tnuts into the rear most crossbar on the rack. Using the 1/4"-20 x 0.75" socket buttons, and 1/4" flat washers attach the name plate and name plate backer to the cross bar.



NOW GET OUT THERE AND
EXPLORE.

WELCOME TO THE SHERPA FAMILY!
MAKE SURE TO FOLLOW US ON YOUR SOCIALS AND TAG US IN YOUR ADVENTURES.

All products built and designed by Sherpa Equipment Company are intended for off-road use and should be assembled, installed, and used according to Sherpa Equipment Company's recommendations. Sherpa Equipment Company's products should be used safely with good judgment towards others and surroundings.

By installing Sherpa Equipment Company's products on your vehicle you assume all liability. Sherpa Equipment Company will not be held liable for damages or loss associated with the installation or use of its products. It is recommended that you inspect your roof rack within the first 100 miles of installation and every 500 miles after.