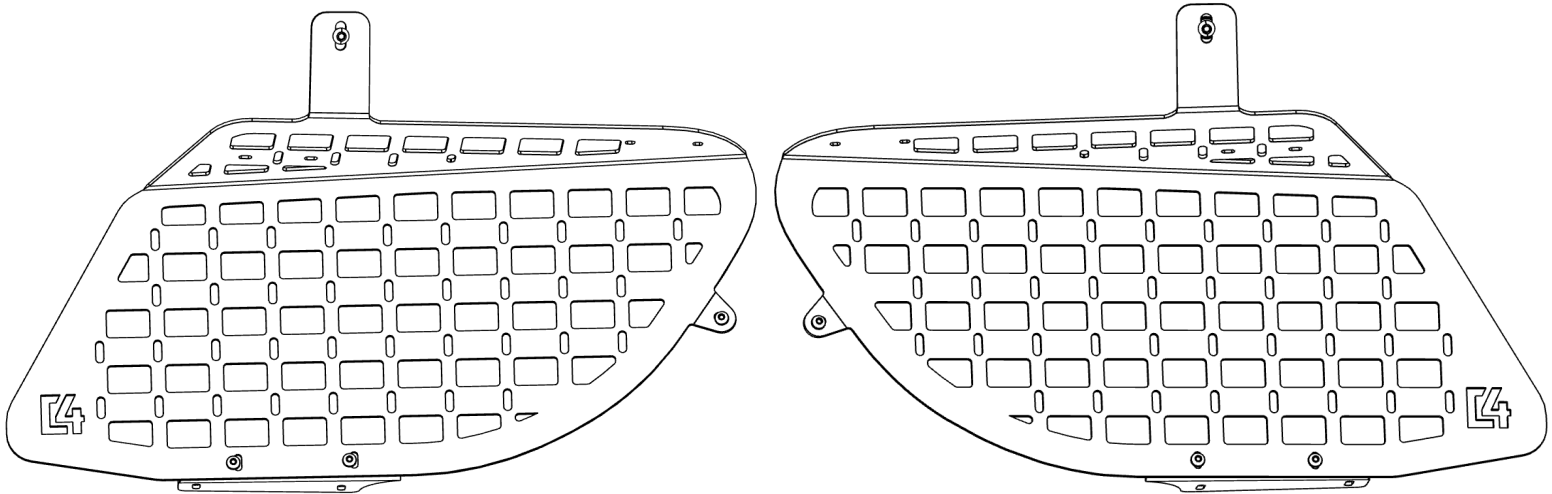




INSTALLATION GUIDE

2025-UP | TOYOTA 4RUNNER

[REAR WINDOW MSP]
1125-70210



TOOLS REQUIRED

- 10mm, 7/16 Sockets
- 10mm, 7/16 Wrenches
- Pry Tool
- Marker
- Rivet Nut Installation Tool
- 5/32, 5mm Hex
- Drill
- Step Up Drill Bit
- Tape Measure

SKILL LEVEL

- Easy

TIME REQUIRED

- Approximately 1 Hour **(This installation guide covers the installation of the product only. It does not include instructions and time for wiring)**

⚠ WARNINGS/CAUTIONS BEFORE STARTING INSTALLATION ⚠

-BEFORE YOU INSTALL THIS KIT-

Read and understand all instructions, warnings, cautions, & notes contained in this installation instruction guide. Consult your vehicle owner's manual for proper disconnection of electrical and lifting of vehicle if required for installation of this product.

This install may require some technical skills and knowledge of basic mechanical work. If you do not feel that you are capable of performing this install please take this product to a trained professional.

After reading this guide please contact us with any questions or concerns before installing product.

Customer Service: 1-605-721-2911

C4 Fabrication is **not** responsible for any bodily injury or harm to you or your vehicle as a result of an improper install.

Proper installation of this kit required knowledge of the factory recommended procedures for removal and installation of original equipment components.

We recommend that the factory shop manual and any special tools needed to service your vehicle be on hand during the installation. Installation of this kit without proper knowledge of the factory recommended procedures may affect the performance of these components and the safety of the vehicle.

Inspect all contents of this package to make sure product is not damaged and all installation hardware has been included. If parts are missing from kit, please be prepared to provide the following information:

1. Name of purchase location
2. Bar Code on side of box
3. Date above bar code
4. Date inside box cover

ALWAYS WEAR EYE PROTECTION WHEN OPERATING POWER TOOLS

[A.]

4x



1/4-20 X 5/8" BUTTON HEAD BOLT

5/32 ALLEN

[A1.]

6x



1/4-20 X 3/4" BUTTON HEAD BOLT

5/32 ALLEN

[A2.]

4x



M6-1.0 X 20MM BUTTON HEAD BOLT

5/32 ALLEN

[B.]

6x



M6 FLAT WASHER

[B1.]

8x



1/4" FLAT WASHER

[C.]

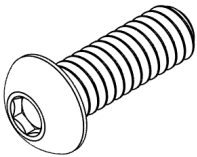
4x



1/4-20" RIVET NUT

[D.]

2x



M8-1.25MM X 30MM BUTTON HEAD BOLT

HW5 ALLEN

[D1.]

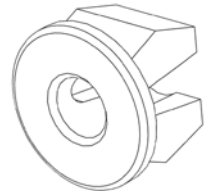
2x



M8 FLAT WASHER

[E.]

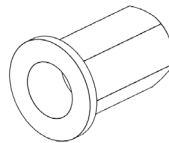
2x



PLASTIC SNAP IN NUT

[F.]

2x



M8-1.25MM HEX RIVET NUT

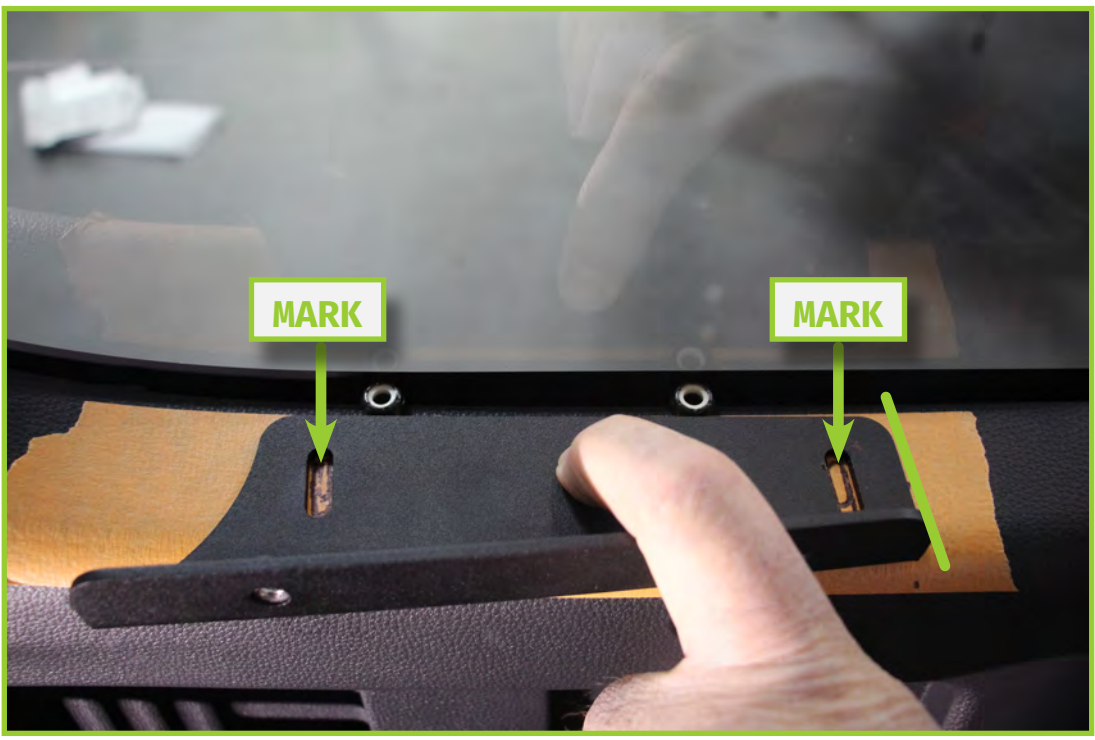
STEP 1

Tape the sections as shown below with masking tape. Next, using a ruler or your choice of measuring tools, use the edge of the cubby as a reference point as shown on the orange line. Next, measure a 1-1/8" over and mark a line. This will be used for locating the mounting bracket.



STEP 2

Place 2x 1/4 nuts (**B2**) for spacing the bracket away from the glass as shown below. Next, place the bracket against the nuts and the line you marked on **STEP 1**. Mark the slotted holes and set the bracket aside.



INSTALL

STEP 3

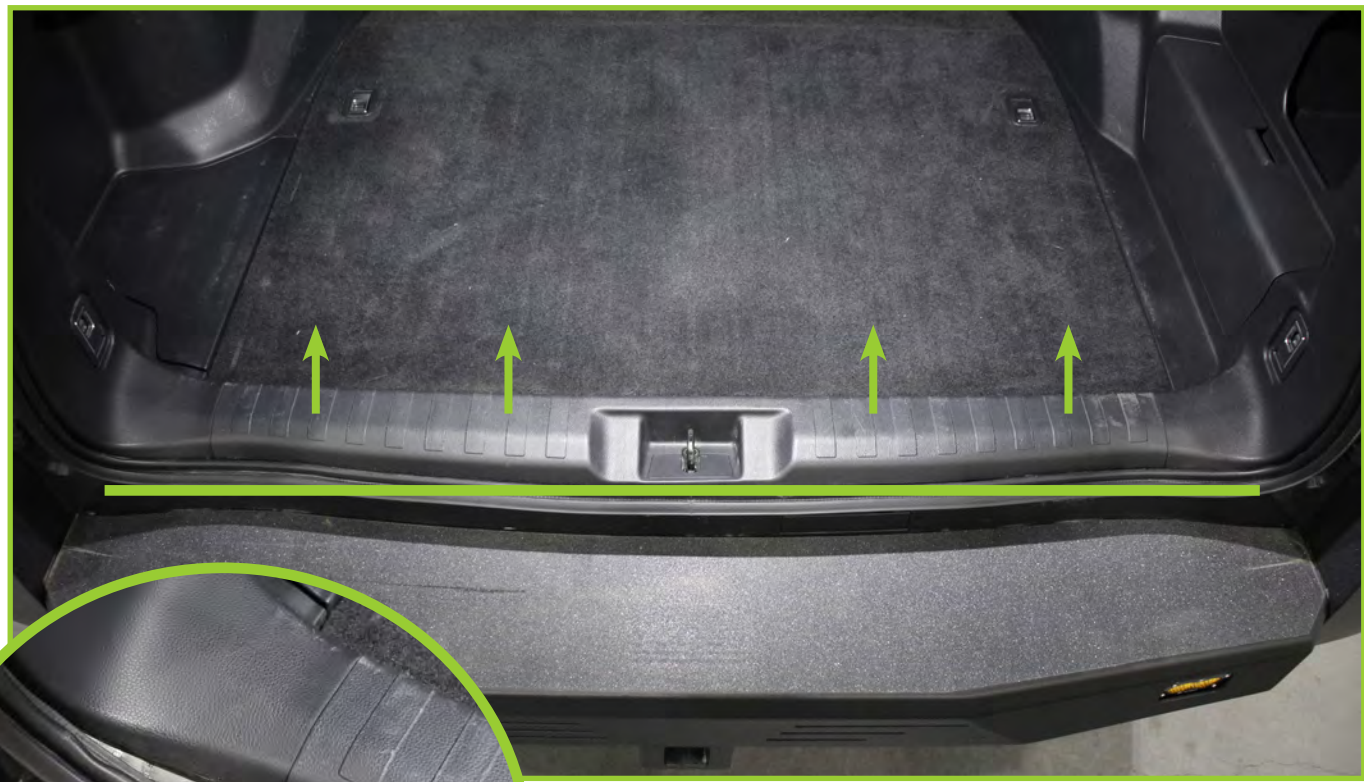
Using a drill and a step up drill bit, drill a 1/2" hole in the center of the slot you marked on **STEP 2**.



REMOVAL

STEP 4

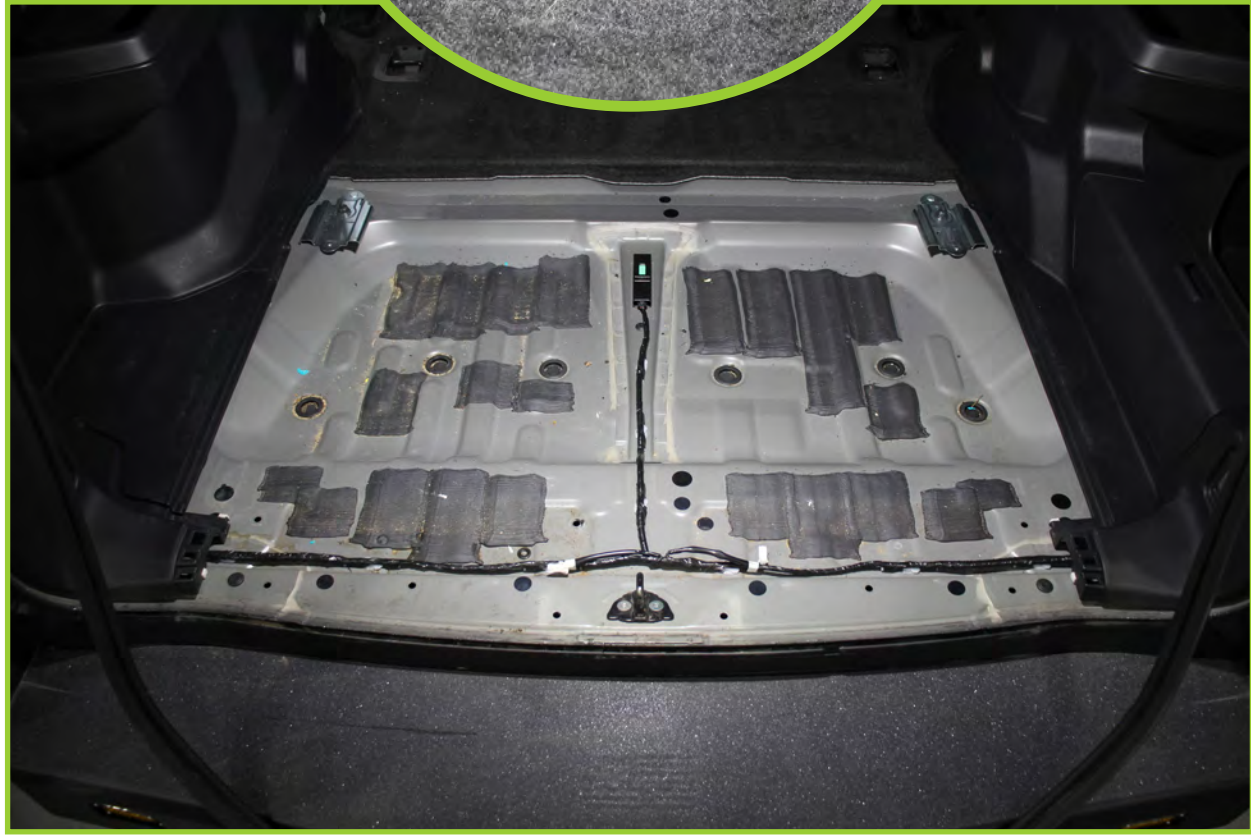
Pull the weather strip gasket to remove it from the door seal, then gently pry the plastic sill plate to remove from the vehicle.



REMOVAL

STEP 5

Use a plastic pry tool to expose the bolts shown below, then using a 10mm socket remove the cargo hook bolts. Once removed, you can lift the floor panel from the edges to remove it from the vehicle.



REMOVAL

STEP 6

Use a plastic pry tool to access the 10mm bolt behind the cargo hook.



REMOVAL

STEP 7

Rotate the cargo net hook counter clockwise and pull to remove. Then using a 10mm socket remove the bolt shown below. Repeat on other side.



REMOVAL

STEP 8

Use a plastic pry tool to remove the indicated plastic cover. Then use a 10mm socket to remove the exposed bolt. Repeat on other side.



STEP 9

Use a plastic pry tool to remove the indicated plastic cover. Then use a 10mm socket to remove the exposed bolt. Repeat on other side.



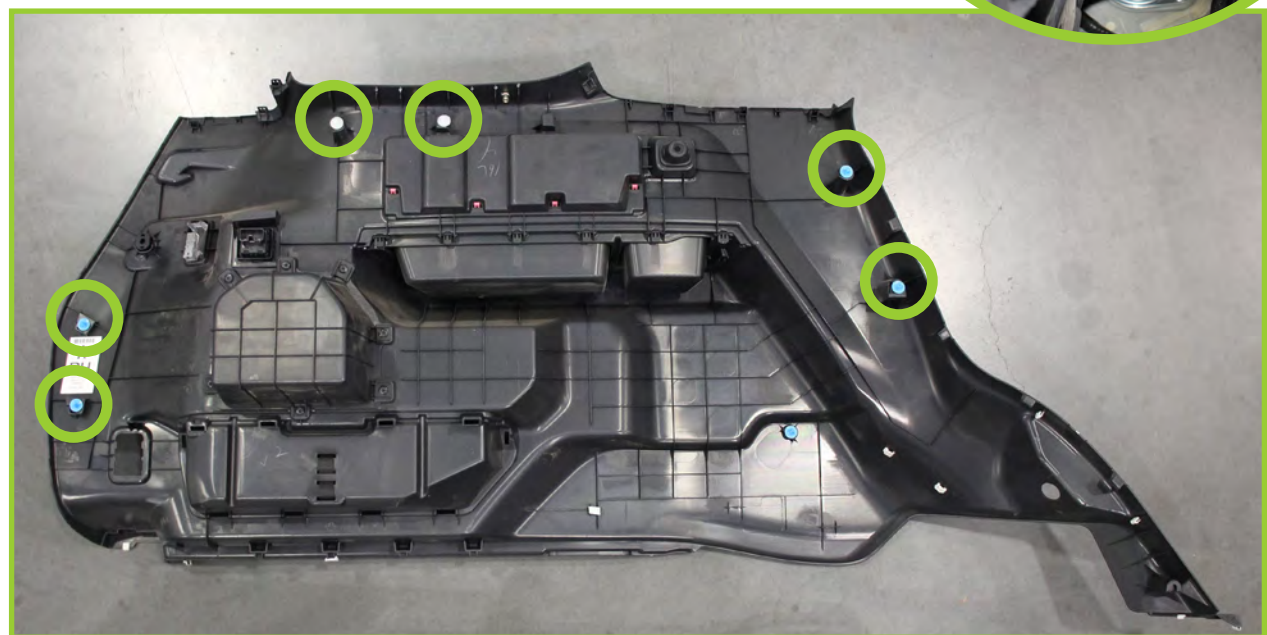
STEP 10

Use a plastic pry tool to remove the indicated plastic cover. Then use a 10mm socket to remove the exposed bolt. Repeat on other side.



STEP 11

Use a plastic pry tool to release the passenger rear panel at the clip locations indicated below. Use care to avoid damage. Prior to removing the panel from the vehicle, reach behind the back side and disconnect the indicated 12v power supply and light connections.



STEP 12

Remove the driver side plastic floor panel indicated below by pulling upwards at the highlighted clip locations.



STEP 13

Use a plastic pry tool to access the 10mm bolt behind the cargo hook.



STEP 14

Rotate the cargo net hook counter clockwise and pull to remove. Then using a 10mm socket remove the bolt shown below. Repeat on other side.



REMOVAL

STEP 15

Use a plastic pry tool to remove the indicated plastic cover. Then use a 10mm socket to remove the exposed bolt. Repeat on other side.



STEP 16

Use a plastic pry tool to remove the indicated plastic cover. Then use a 10mm socket to remove the exposed bolt. Repeat on other side.



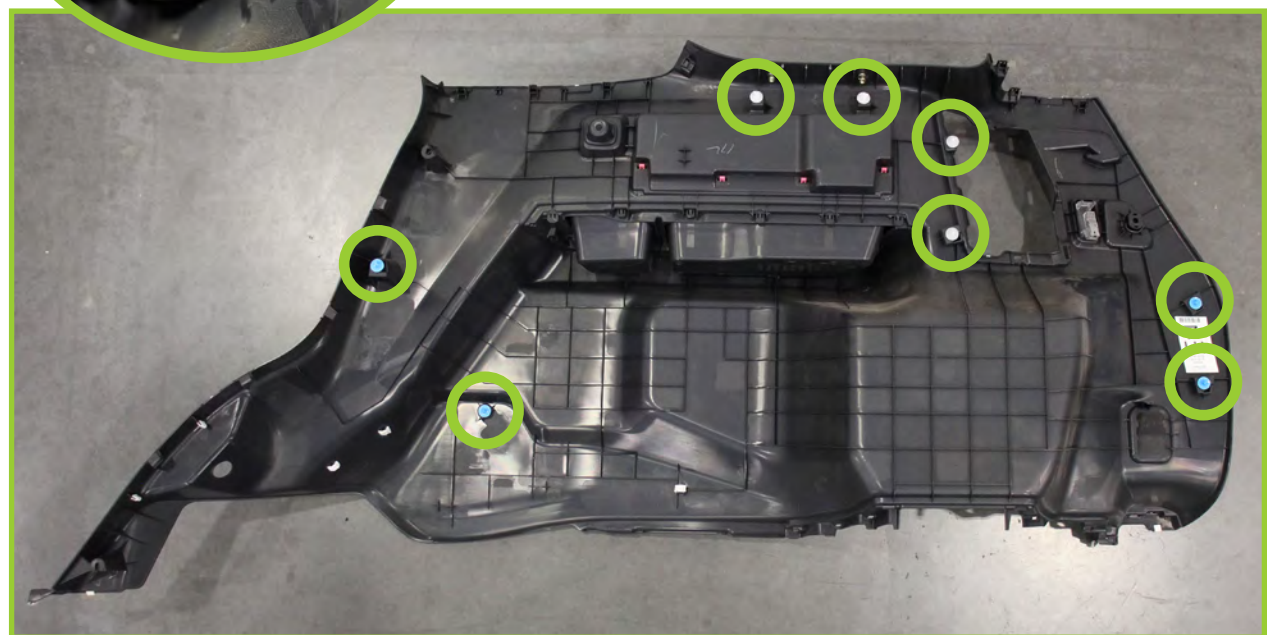
STEP 17

Use a plastic pry tool to remove the indicated plastic cover. Then use a 10mm socket to remove the exposed bolt. Repeat on other side.



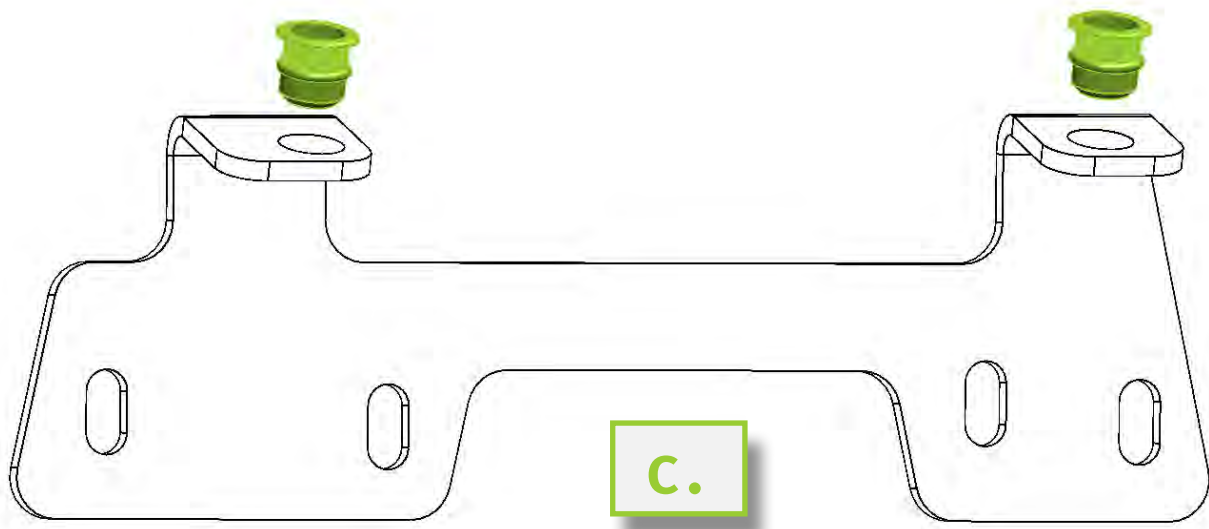
STEP 18

Use a plastic pry tool to release the driver rear panel at the clip locations indicated below. Use care to avoid damage. Prior to removing the panel from the vehicle, reach behind the back side and disconnect the indicated light connection.



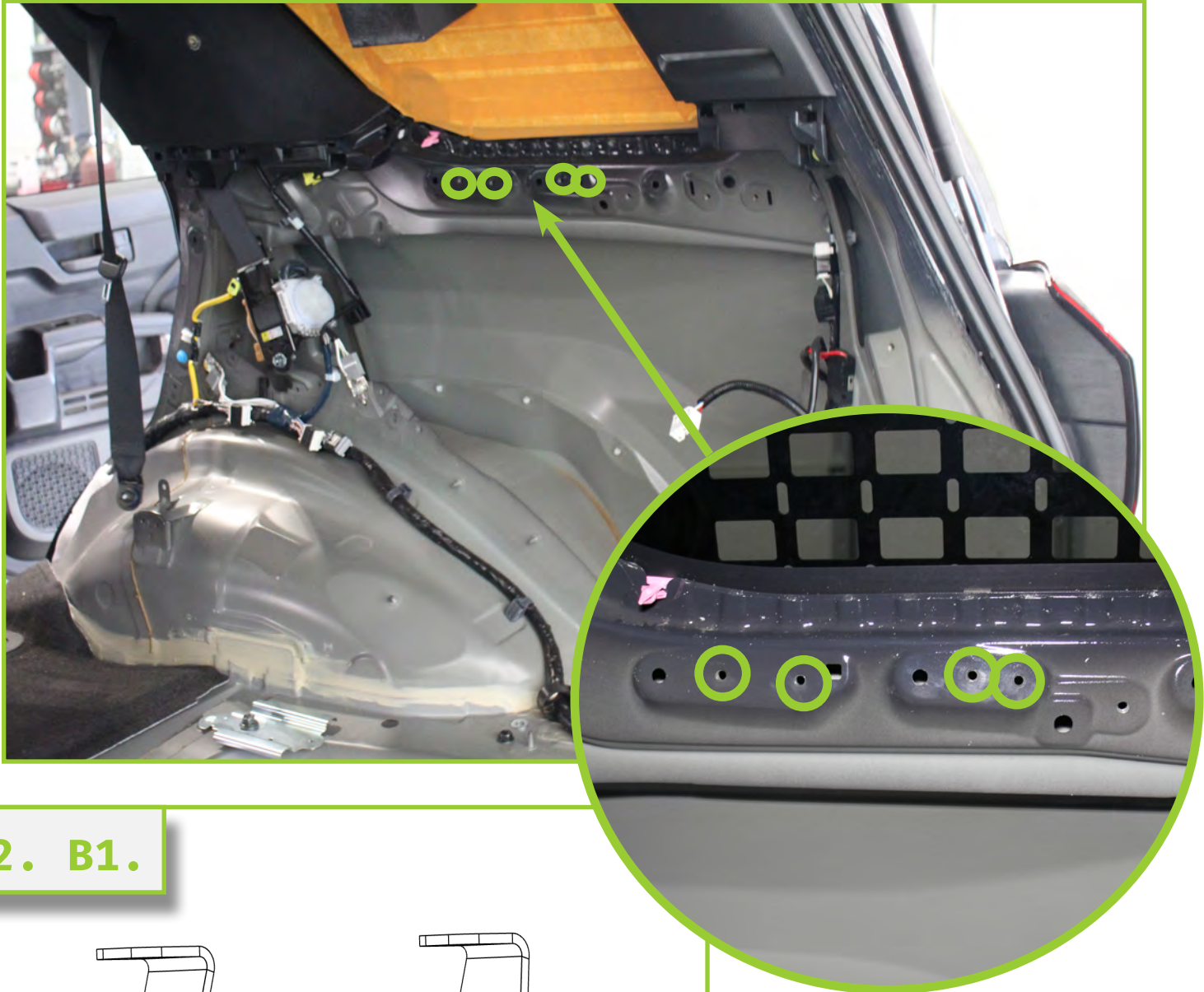
STEP 19

Using a riv nut installation tool, install the provided hardware (C) from the top side into both the support brackets as shown below.

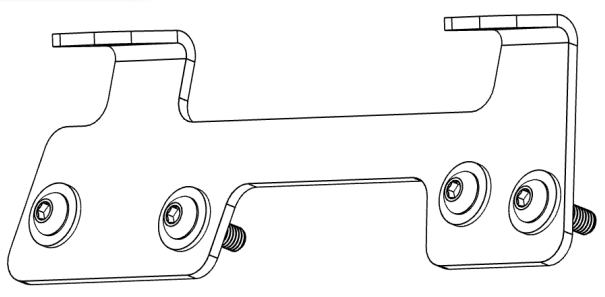


STEP 20

Using a 5/32 allen and the provided (A2, B1) hardware, install the passenger side mounting bracket into the threaded holes indicated below.



A2. B1.



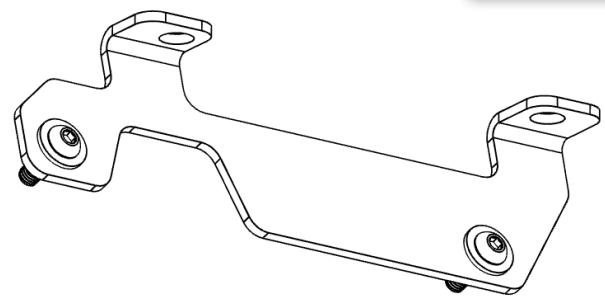
REMOVAL

STEP 21

Using a 5/32 allen and the provided (A2, B1) hardware, install the driver side mounting bracket into the threaded holes indicated below.



A2. B1.



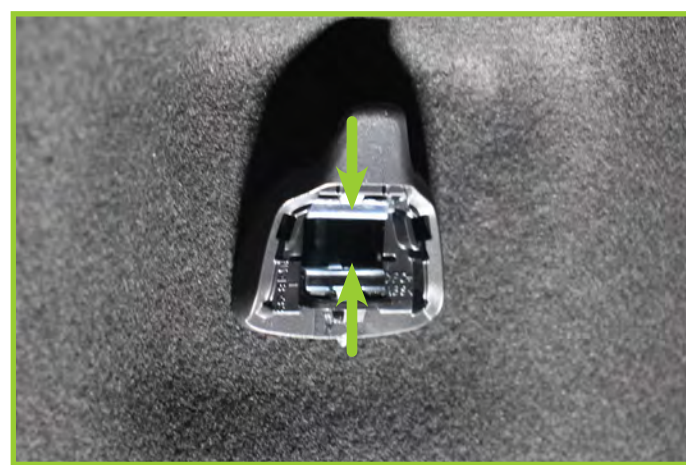
STEP 22

Follow **STEPS 4-18** in reverse order to re-install the rear panels into the vehicle. Replace any damaged clips as needed at this time.



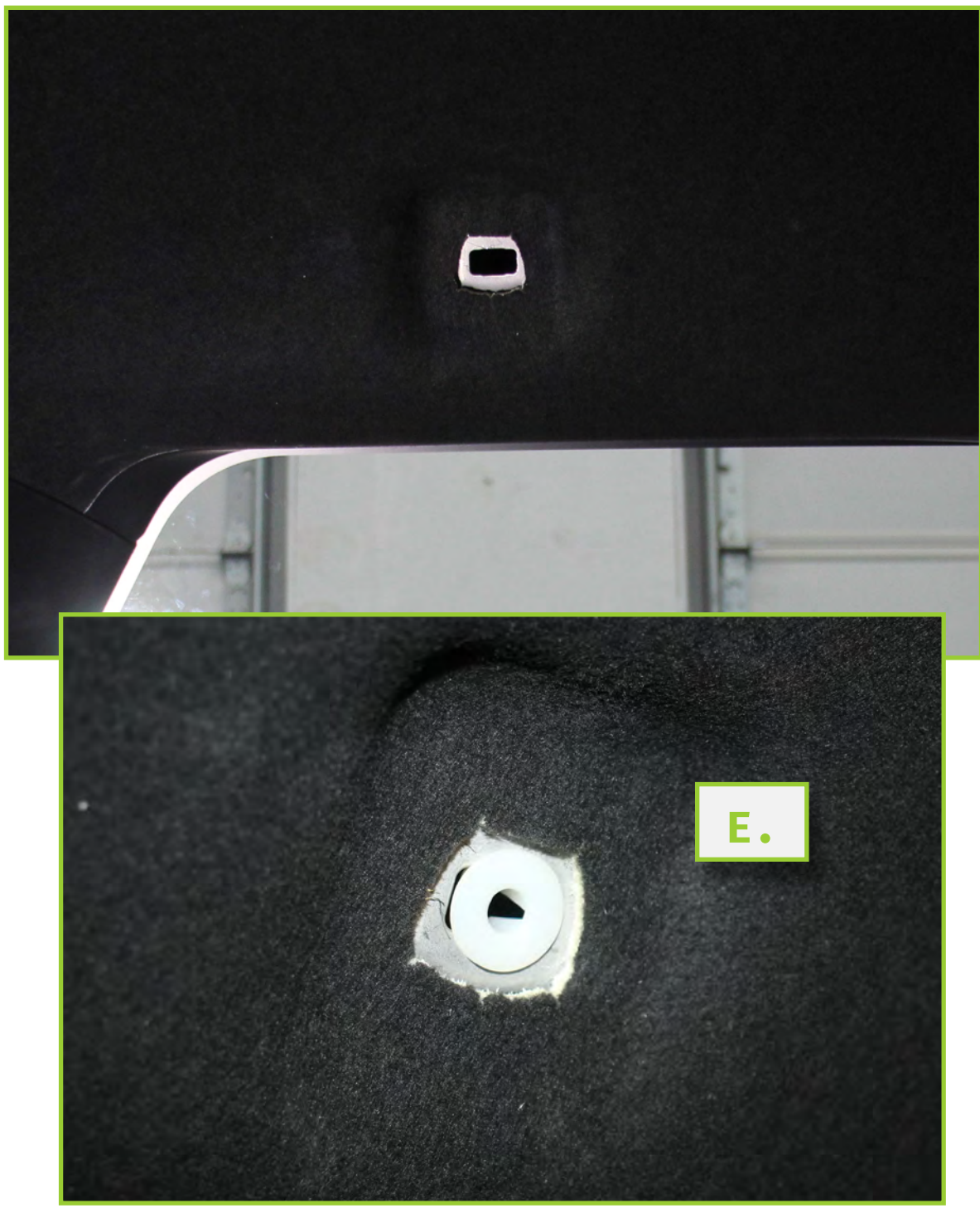
STEP 23

Using a flathead screwdriver, remove the cap and squeeze the metal tabs in together to remove the hook as shown below.



STEP 24

(Standard Option) Using the provided (E) snap in nut, install into the mounting hole from **step 23**.



STEP 25

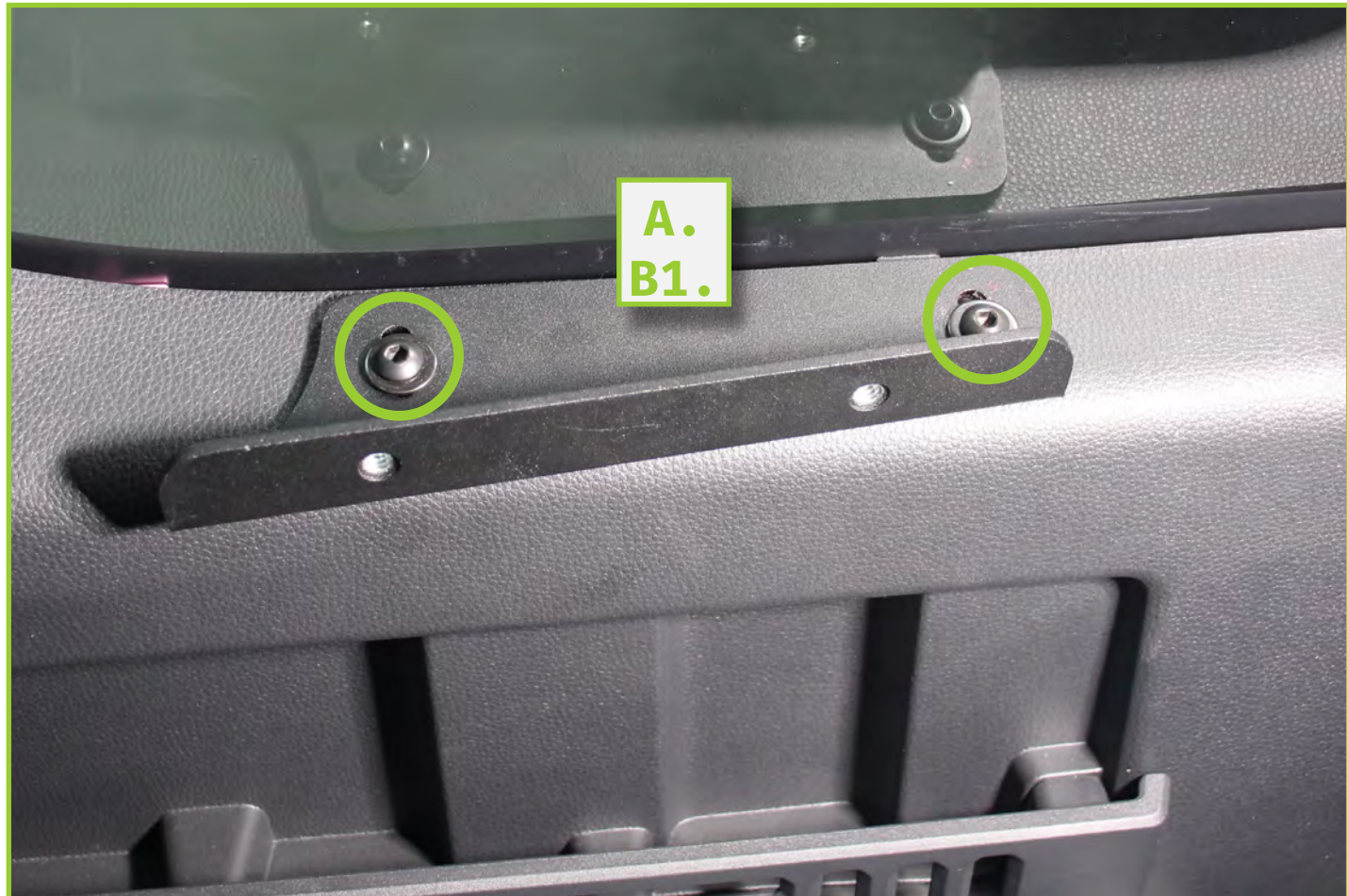
(Heavy Duty Option) Using a riv nut installation tool and the provided hardware (F), install into the mounting hole from **step 23** as shown below.

****If you have issues inserting, use a rubber mallet and lightly tap until fully seated****



STEP 26

Using a 5/32 allen and the provided hardware **(A, B1)**. Install the bracket into the rivet nut as shown below.

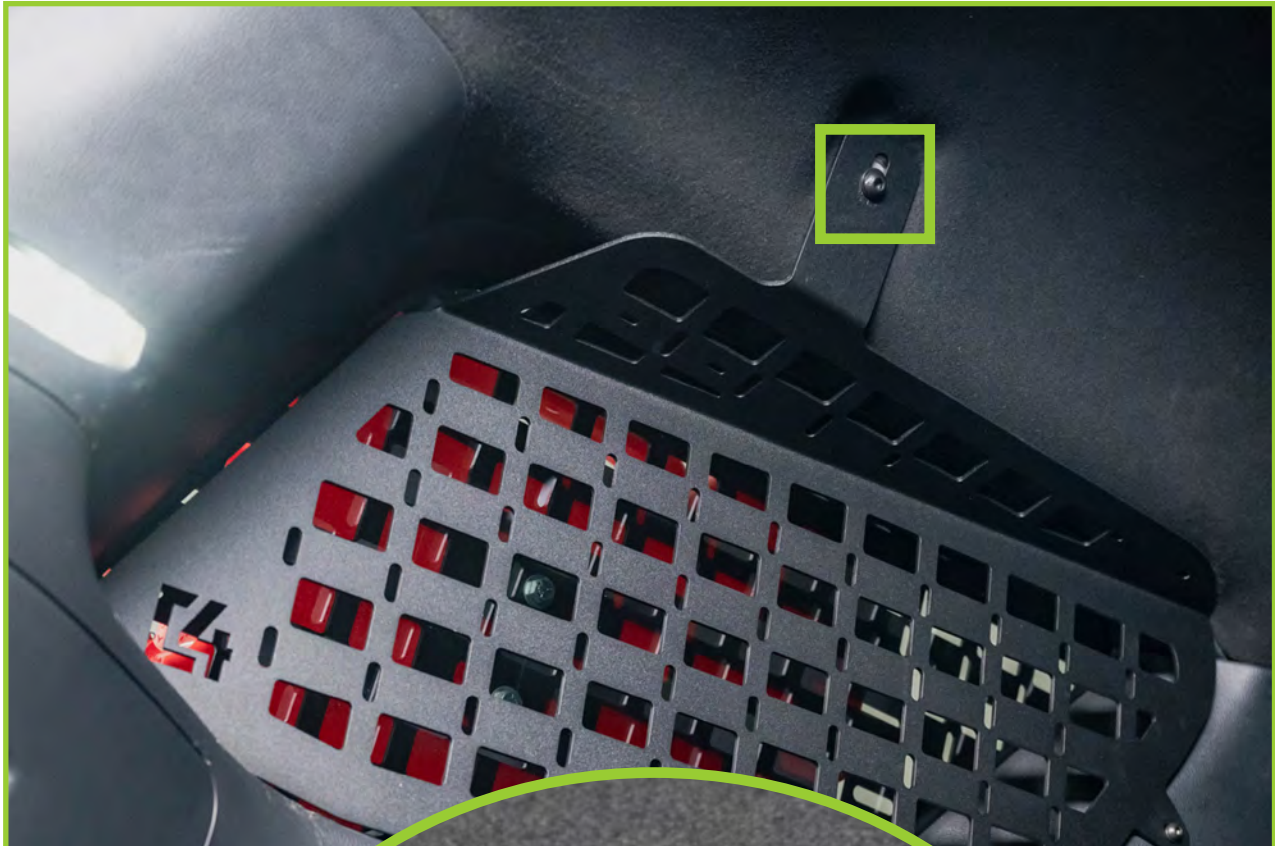


INSTALL

STEP 27

Using a #5 allen and the provided hardware (D, D1). Place the Rear MSP into position and install as shown below.

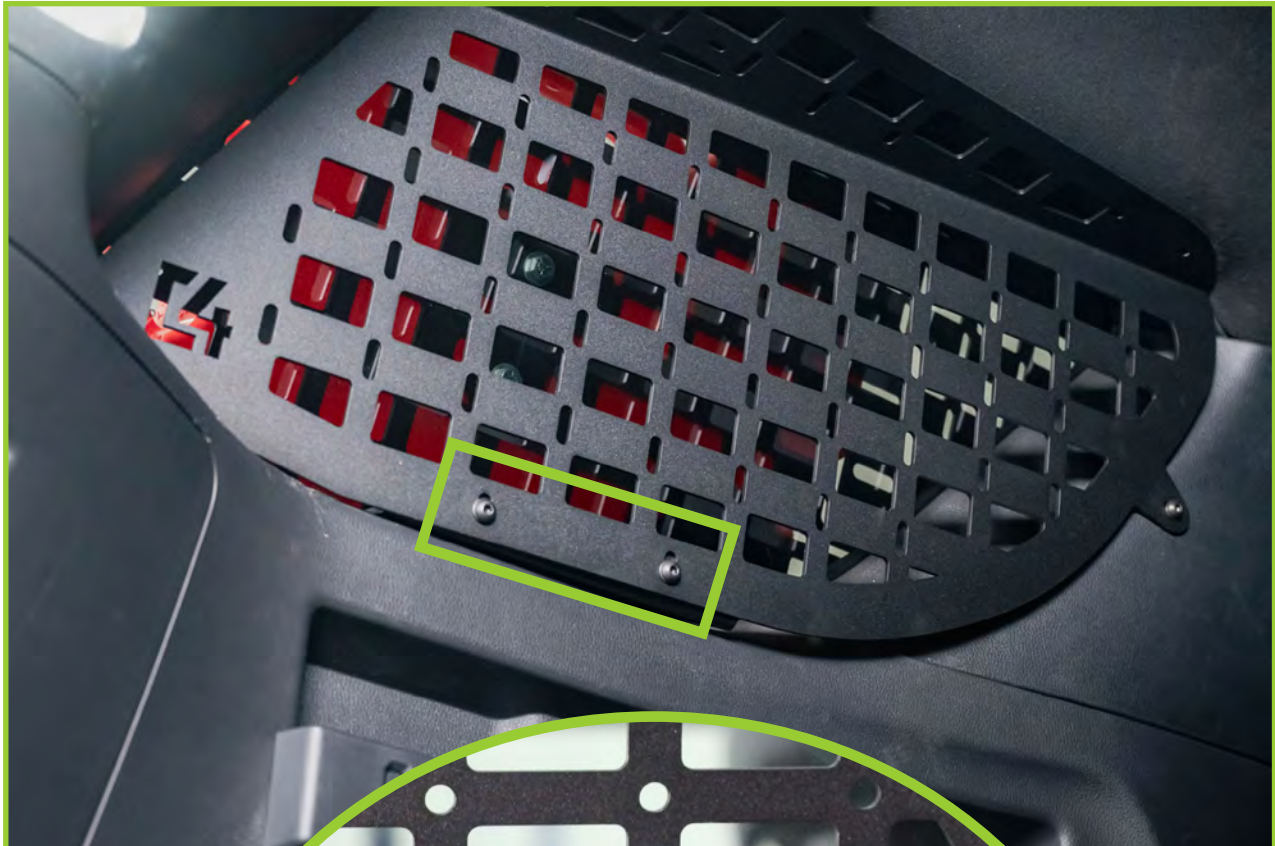
****Leave hardware loose for adjustments****



INSTALL

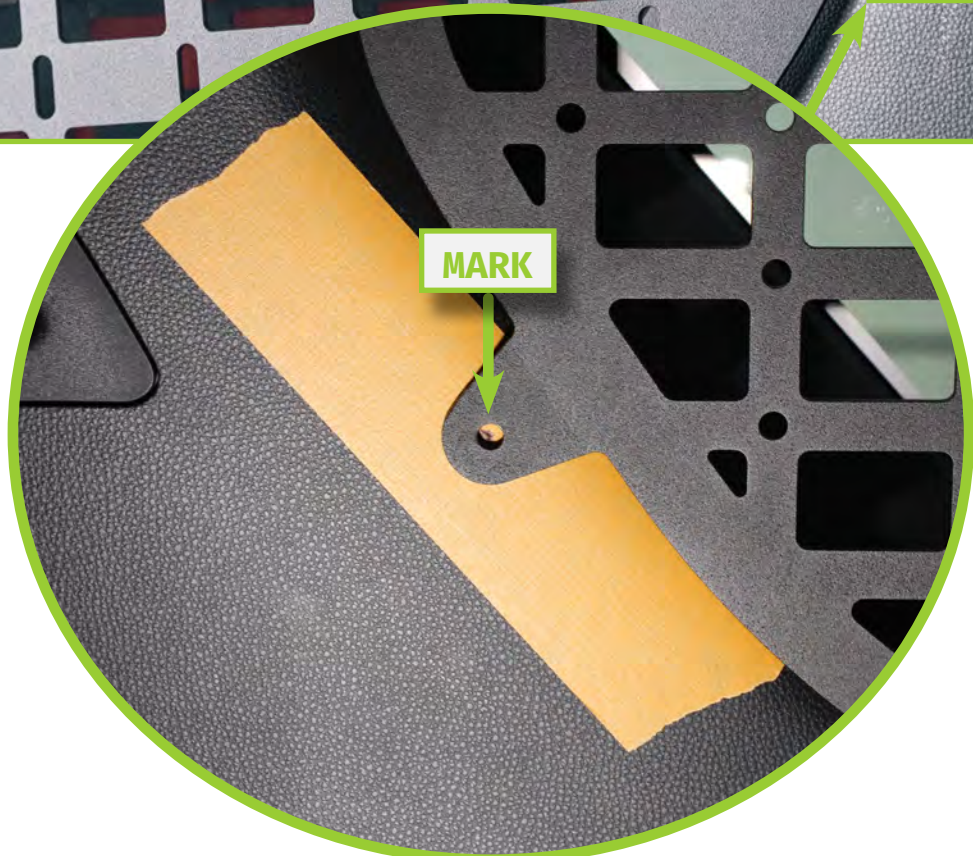
STEP 28

Using a 5/32 allen and the provided hardware **(A, B)**. Install the MOLLE panel to the brackets from **STEP 26**
****Leave hardware loose for adjustments****



STEP 29

Position the MSP with a consistent top gap. Then, mark the forward facing hole and remove the MSP and set aside.



STEP 30

Using a drill and a step drill bit, drill a 7/16" hole where marked in **STEP 11**. Next, Using a riv nut installation tool to Install the provided hardware **(C)**.



STEP 31

Re position the MSP and repeat **STEPS 27 & 28**. Then, use a 5/32 allen and the provided hardware **(A, B)**, to install into the rivet nut from **STEP 30**.

****Adjust MSP for best fitment and tighten all hardware at this time****





FOR ASSISTANCE OR PRODUCT INQUIRES

CALL: 1-605-721-2911 OR EMAIL: sales@c4fabrication.com