



SHERPA
PREMIUM RACK SYSTEMS

THE ATLAS

RACK SYSTEM INSTALL GUIDE

HARDWARE CHECKLIST

12

M8-1.25
(45MM)



24

1/4"-20
TNUT



1

WIND FAIRING



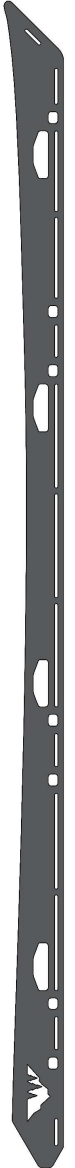
10

CROSSBARS



2

SIDEPLATES



40

1/4"-20
(1") SB



64

1/4" FLAT
WASHER



6

1/4"-20
(1/2") SB



12

M8 BONDED
WASHER



18

1/4"-20
(9/16") HEX



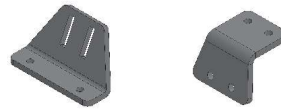
4

1/4"-20
NUT



4

1/4"-20
(1") CARRIAGE



2

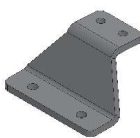
ADJ
MOUNTS
PN: RS

FORWARD-MOST MOUNT



2

FRONT
MOUNTS
PN: AL F



2

MIDDLE
MOUNTS
PN: AL M



2

REAR
MOUNTS
PN: AL R



6

RUBBER
SPACERS



12

M8 SPACERS

1

Name Plate

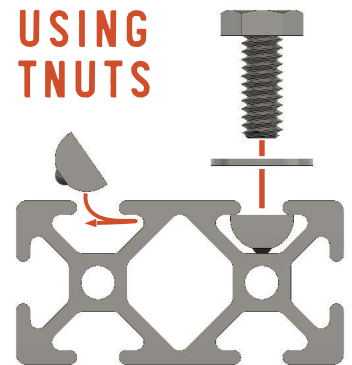


BEFORE YOU START

Remove your stock roof rack (if applicable). Loosen all stock rack bolts before fully removing any of them. This will prevent the capture plates from working loose inside of the roof. Work slowly when removing the stock rack as not to break the plastic sleeves.

The below assembly images may differ slightly in appearance from actual product.

USING TNUTS



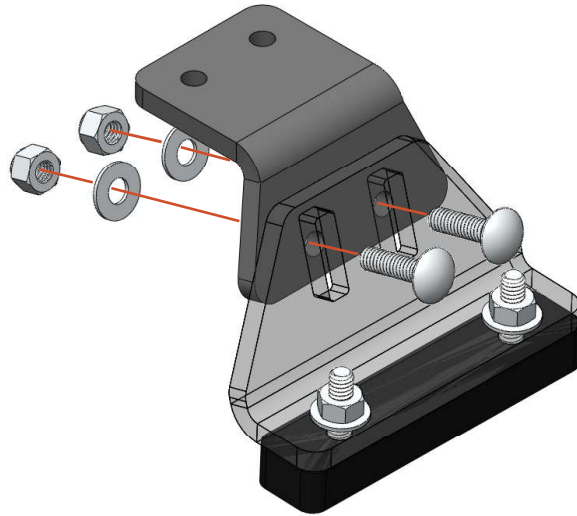
MOUNTS

01 ADJUSTABLE MOUNT

Required Components:

- 4 1/4"-20x1" Carriage Bolts
- 4 1/4" Washers
- 4 1/4"-20 Nuts

Secure the lower and upper adjustable mount brackets leaving the hardware loose so that it can be adjusted during a later step.



MOUNTS

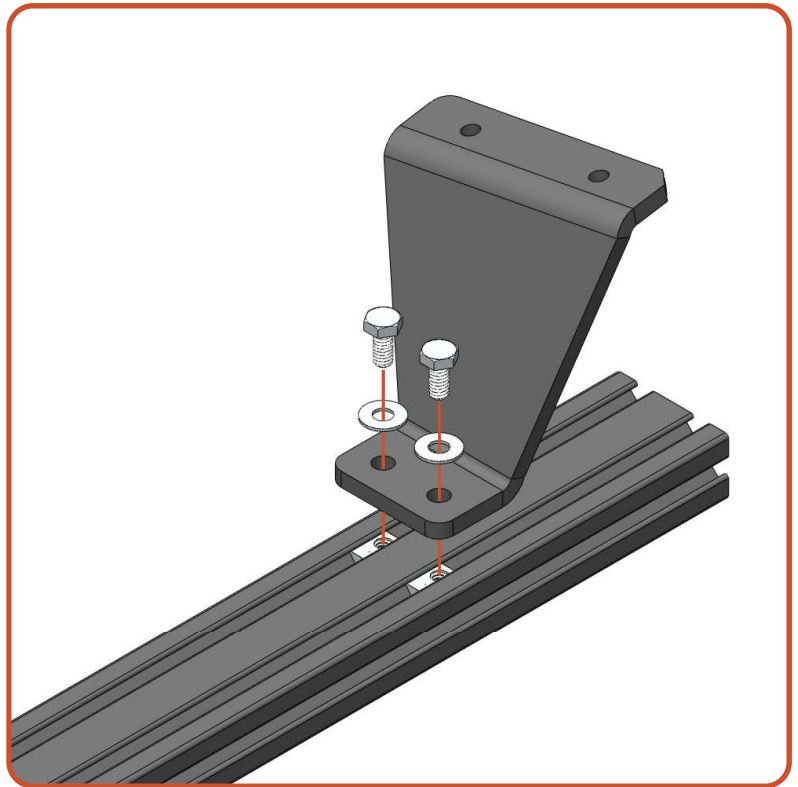
01 FRONT MOUNT ASSEMBLY

Required Components:

- 1 Crossbar
- 2 Front Mounts
- 4 1/4"-20 x 9/16" Hex Bolts
- 4 1/4" Flat Washers
- 4 Tnuts

Drop 4 tnuts into the slots on the crossbar and line them up with the holes in mounts. Secure top of the mounting bracket to the crossbar leaving the hardware loose so that it can be adjusted during a later step.

Note: Front mounts have the "F" designation at the end.



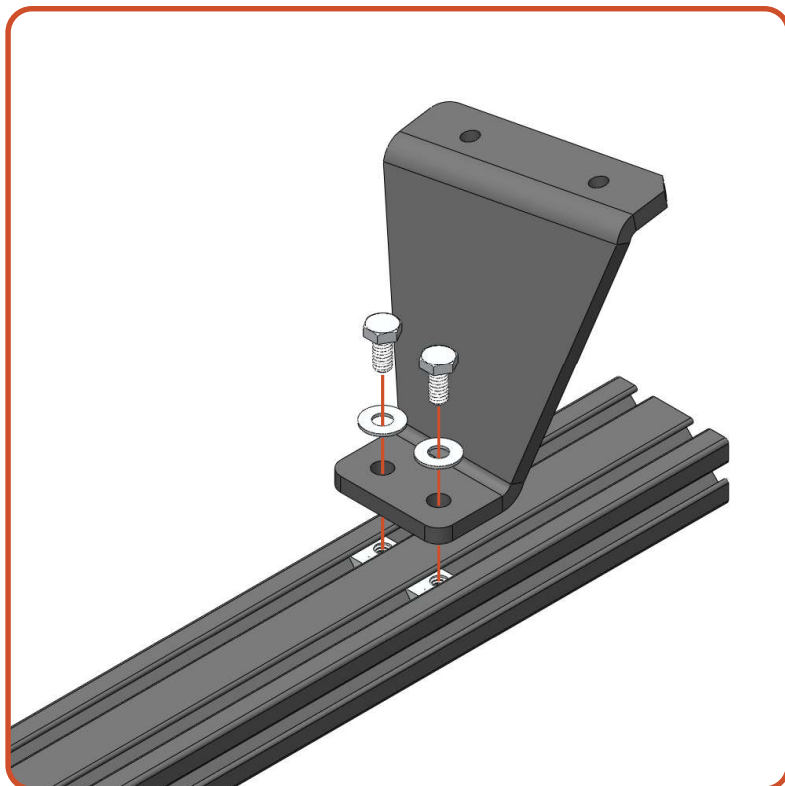
02 REAR MOUNT ASSEMBLY

Required Components:

- 1 Crossbar
- 2 Rear Mounts
- 4 1/4"-20 x 9/16" Hex Bolts
- 4 1/4" Flat Washers
- 4 Nuts

Repeat assembly.

Note: Rear mounts have the "R" designation at the end.



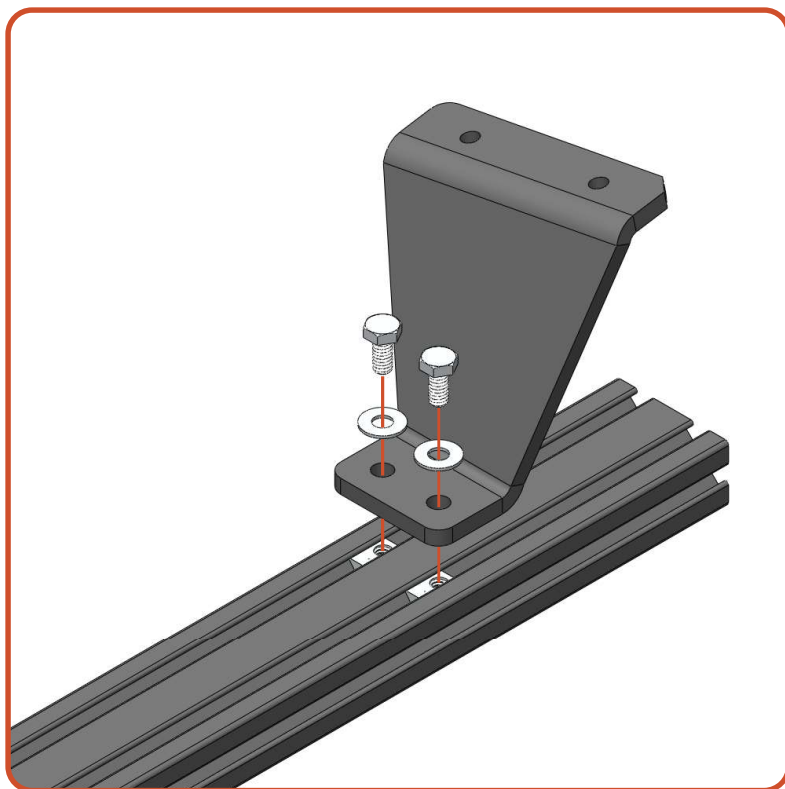
03 MID MOUNT ASSEMBLY

Required Components:

- 1 Crossbar
- 2 Rear Mounts
- 4 1/4"-20 x 9/16" Hex Bolts
- 4 1/4" Flat Washers
- 4 Nuts

If your rack comes with a middle mount(s), repeat assembly.

Note: Middle mounts have the "M" designation at the end.



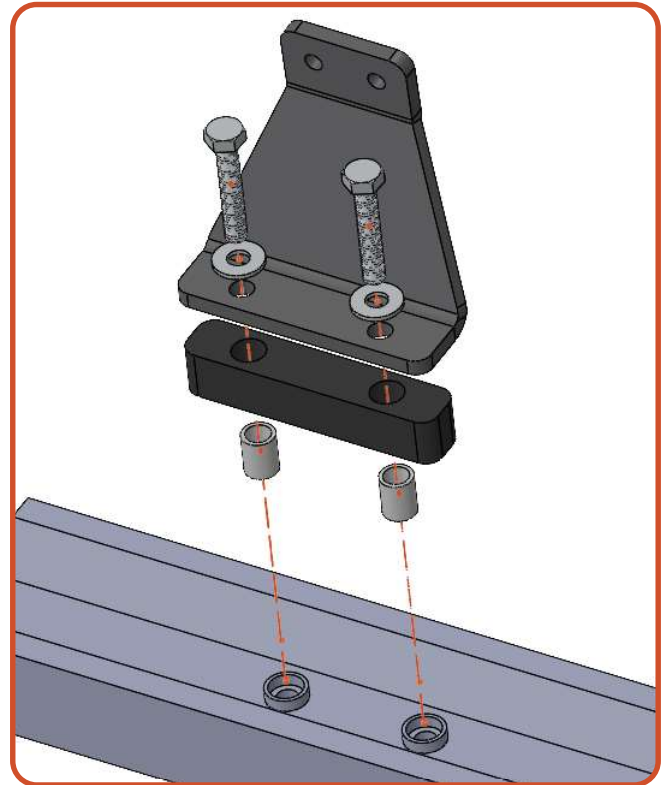
SPACER ASSEMBLY

Exploded View

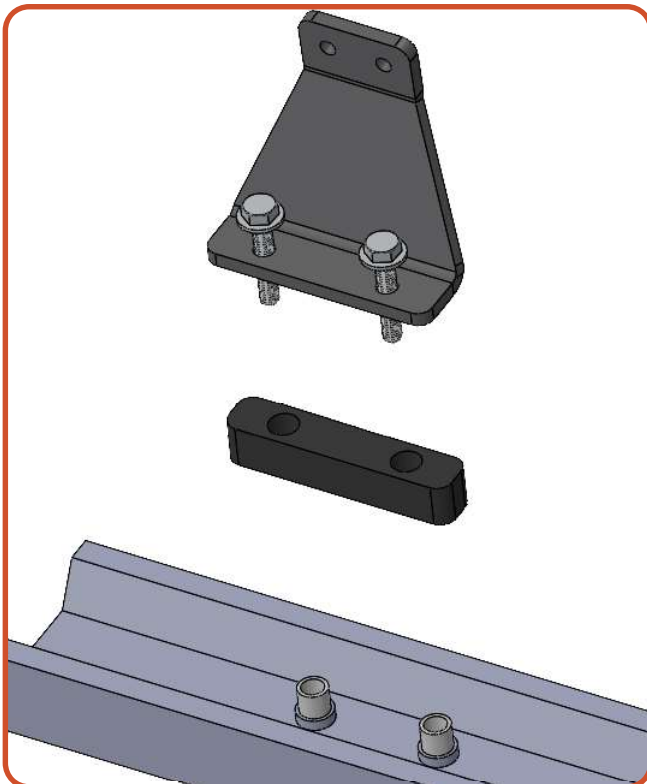
01 SPACER INSTALL TIP

When installing the mounts in the roof gutter, place the stainless spacers in the plastic holes in the gutter. Once the stainless spacers are set into the holes, put the black rubber component over the spacers pressing into place.

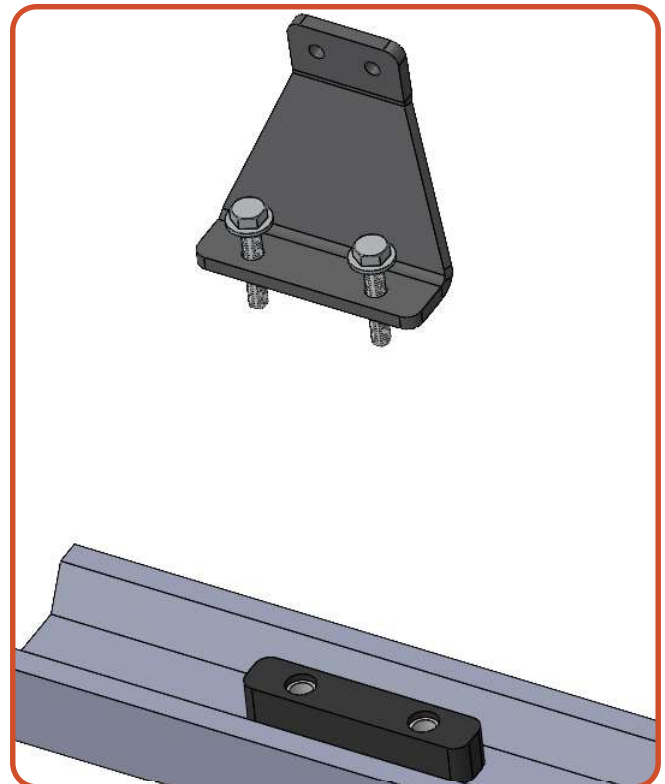
The stainless spacers must be used.



Step One



Step Two



MOUNT INSTALL

01 INSTALL ON VEHICLE

Required Components:

- 4** M8-1.25x45 Hex Bolts
per mount assembly
- 4** M8 Bonded Washers
per mount assembly
- 2** Rubber Spacers
per mount assembly
- 4** M8 Spacers
per mount assembly

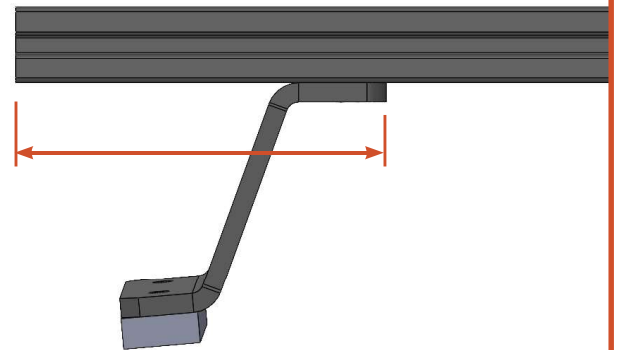
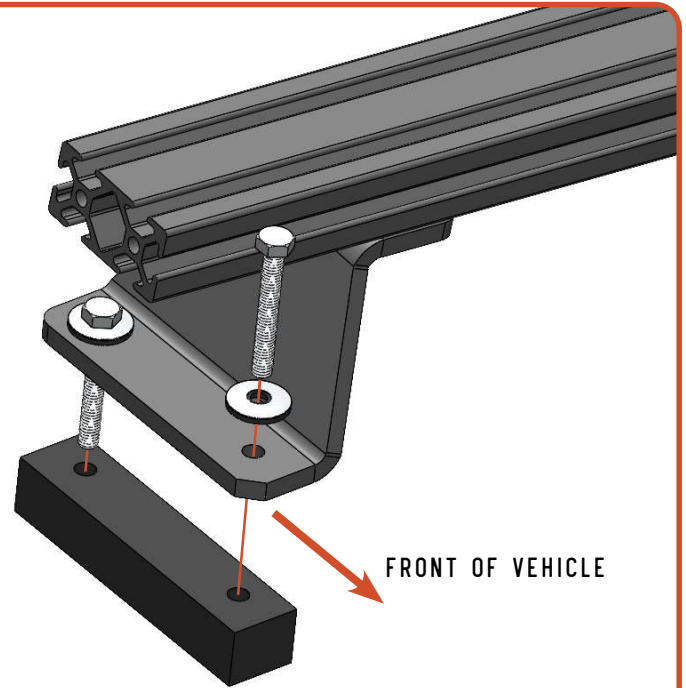
If your vehicle has plastic sleeves in the roof position the M8 Spacers over them. Slide the Rubber Spacers over the M8 Spacers. Position the mounting bracket on the rubber spacer. Apply a drop of blue threadlocker to each of the bolt threads and secure them with bonded washers passed through the bracket, rubber, and into the holes in the roof.

Note: Chamfered corner on the lower part of the mount faces the front of the vehicle.

The bonded washers should compress and become flat, but not concave. Do not over tighten these mounts.

02 CENTER THE MOUNTS

After the main support crossbar have been secured to the vehicle, use a tape measure and center all of the bars on the vehicle. Measure from the inside edge of the mount to the outside face of the crossbar and make these equal side-to-side. Tighten the hardware to the crossbar.



SIDEPLATES

01 SIDEPLATE INSTALL

Required Components:

- 2** Sideplates
- 4** 1/4"-20x1" Socket Bolts
per mount assembly
- 4** 1/4" Washers
per mount assembly

Align the small slots in the sideplates with the ends of the main support crossbars. Secure them using bolts and washers. Leave the bolts loose enough to move the sideplate to the position that matches the curvature of the vehicle.

Once the rack is positioned correctly, tighten down all of the hardware for the sideplates.



MOUNT INSTALL

01 ADJ MOUNT INSTALL

Required Components:

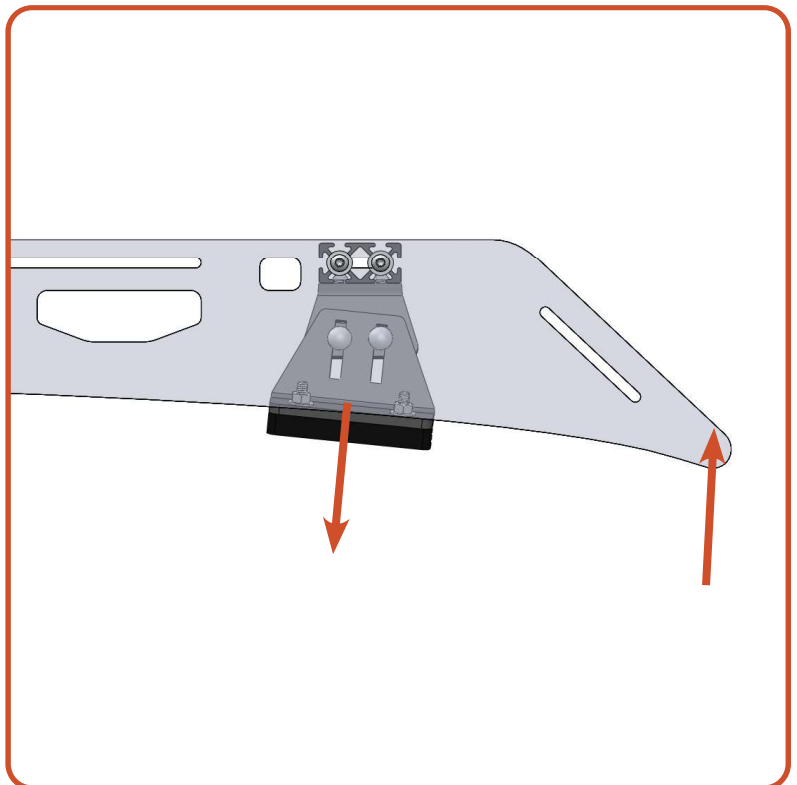
4 1/4"-20x1" Socket Bolts

4 1/4" Washers

Align the small slots in the sideplates with the front adjustable mount assembly crossbar. Secure it using bolts and washers.

Apply upward pressure on the front of the rack and insert a microfiber towel or other soft buffer between the front of the rack and the vehicle's roof. Adjust the angle and height of the mounting foot to sit as firmly on the vehicle's roof as possible, then tighten the hardware in the center of the mount. If possible, it is recommended to position these mounts on the plastic gutter trim to prevent possible paint damage.

Once the mounts are in the correct position, remove the buffer and inspect the rack to make sure it is firm.



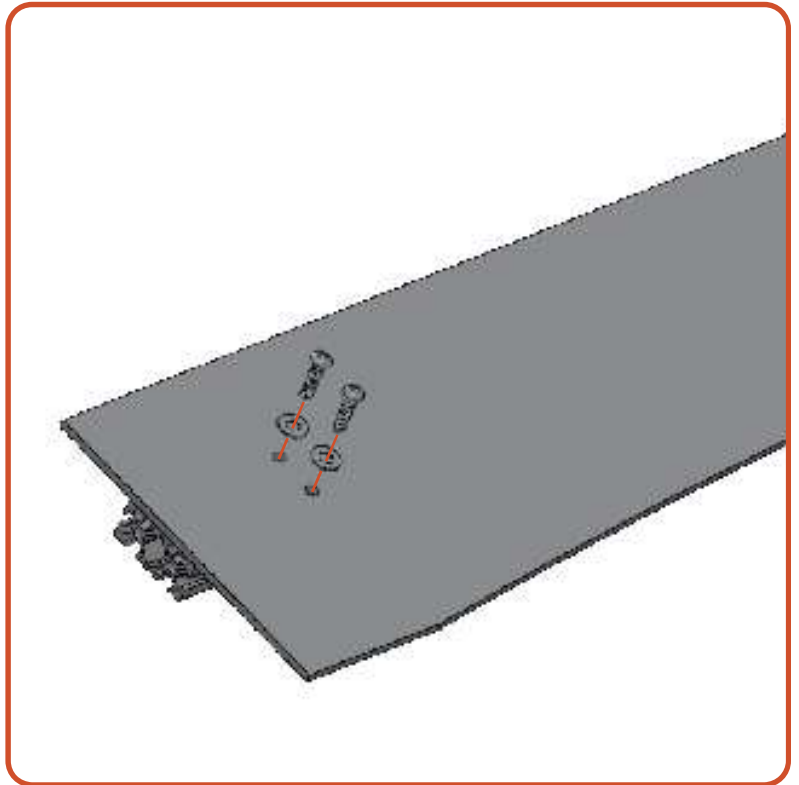
WIND FAIRING

01 FAIRING ASSEMBLY

Required Components:

- 1 Crossbar
- 6 1/4"-20x1/2" Socket Bolts
- 6 1/4" Flat Washers
- 6 Tnuts

Drop 6 tnuts into the slots on the crossbar and line them up with the holes in the fairing. Secure with 6 bolts and washers.



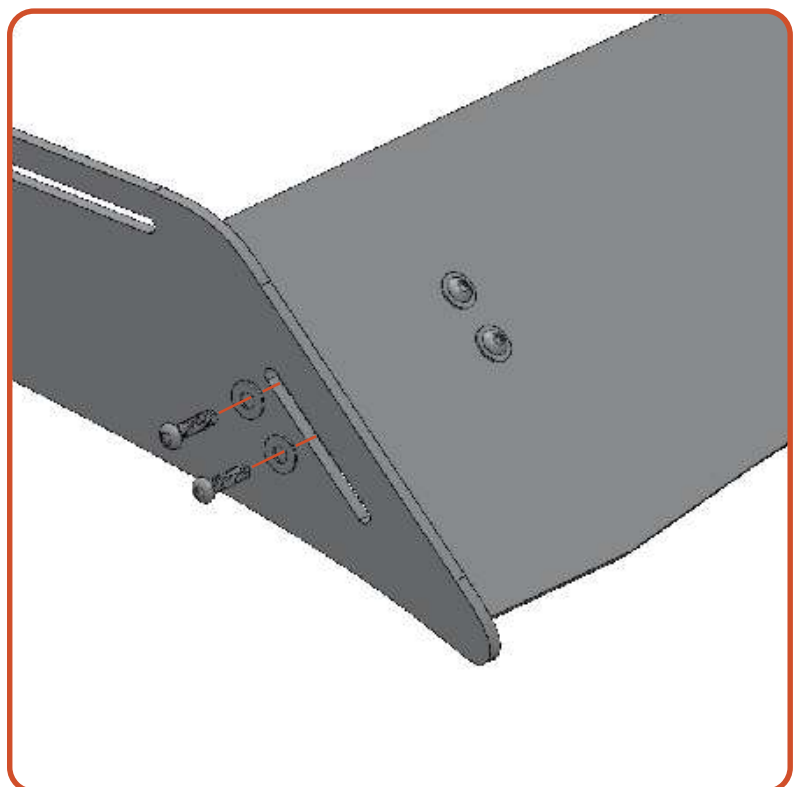
02 FAIRING INSTALLATION

Required Components:

- 4 1/4"-20x1" Socket Bolts
- 4 1/4" Flat Washers

Position the wind fairing in line with the diagonal slot at the front of the rack. Align the bottom of the fairing with the tip of the roof rack and secure it using bolts and washers.

The fairing can be adjusted up or down if wind noise is detected. Small adjustments make a big difference here.





04 INSTALL CROSSBARS

Required Components:

Remaining Crossbars

4 1/4"-20 x 1" Socket Bolts
per crossbar

4 1/4" Flat Washers
per crossbar

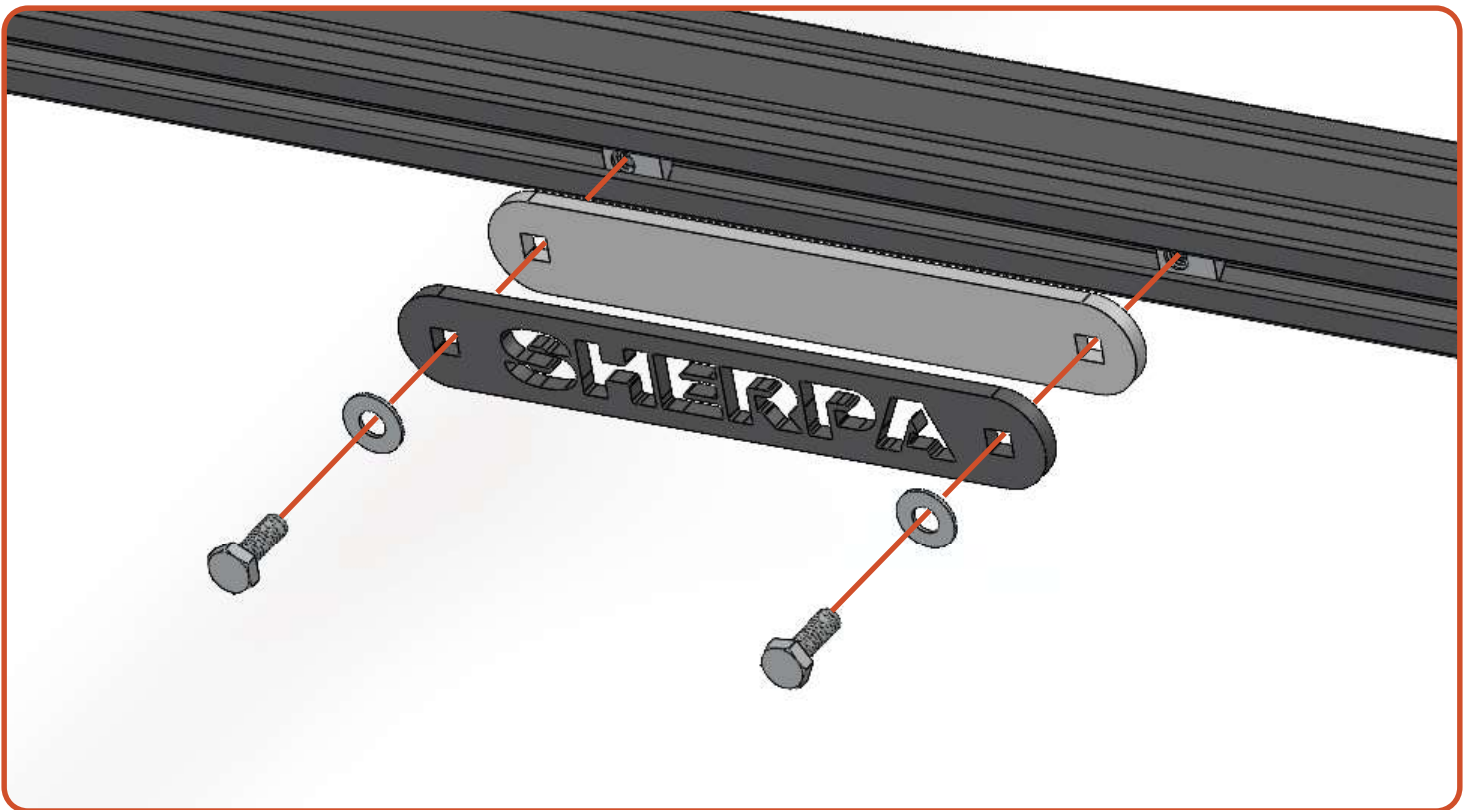
Secure all of the remaining crossbars to the rack system. Space evenly or position according to your load requirements.

SHERPA NAME PLATE

Required Components:

- 2 1/4"-20 x 9/16" Hex Bolts
- 2 1/4"-20 Nuts
- 2 1/4" Flat Washers
- 1 Sherpa Name Plates
- 1 Name Plate Backers

Place the nuts into the rear most crossbar on the rack. Using the 1/4"-20 x 0.75" socket buttons, and 1/4" flat washers attach the name plate and name plate backer to the cross bar.



NOW GET OUT THERE AND
EXPLORE.

WELCOME TO THE SHERPA FAMILY!
MAKE SURE TO FOLLOW US ON YOUR SOCIALS AND TAG US IN YOUR ADVENTURES.

All products built and designed by Sherpa Equipment Company are intended for off-road use and should be assembled, installed, and used according to Sherpa Equipment Company's recommendations. Sherpa Equipment Company's products should be used safely with good judgment towards others and surroundings.

By installing Sherpa Equipment Company's products on your vehicle you assume all liability. Sherpa Equipment Company will not be held liable for damages or loss associated with the installation or use of its products. It is recommended that you inspect your roof rack within the first 100 miles of installation and every 500 miles after.