



SHERPA
PREMIUM RACK SYSTEMS

MID HEIGHT

BEDRACK SYSTEM INSTALL GUIDE

HARDWARE CHECKLIST

2

1/4"-20x1"
CARRIAGE
BOLTS
(70 in-lbs)



40

5/16"-18x1"
CARRIAGE
BOLTS
(130 in-lbs)



40

5/16" FLAT
WASHERS



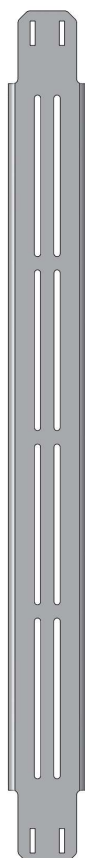
2

1/4" FLAT
WASHERS



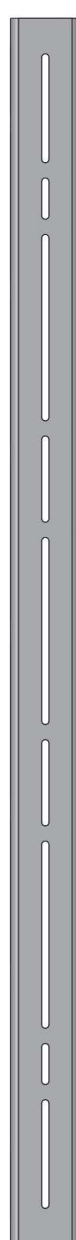
2

ACCESSORY
BRACES



2

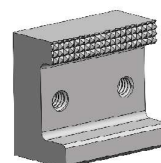
CROSSBARS
(BENT)



CLAMP STYLE MOUNTING

4

C-CLAMPS



8

3/8"-16x1.5"
HEX BOLTS
(15 ft-lbs)



40

5/16"-18
NUTS



2

1/4"-20
NUTS



8

3/8" FLAT
WASHERS

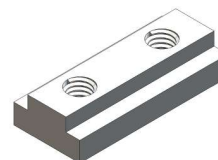


OR

TRACK STYLE MOUNTING

4

BED NUTS



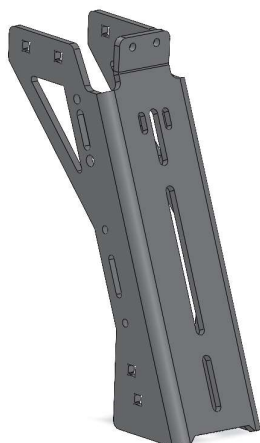
8

3/8"-16x1"
HEX BOLTS
(15 ft-lbs)



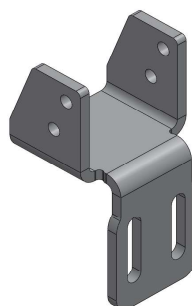
4

MID HEIGHT
TOWERS



4

CHAIR
BRACKETS



BEFORE YOU START

The below assembly images may differ slightly in appearance from actual product.

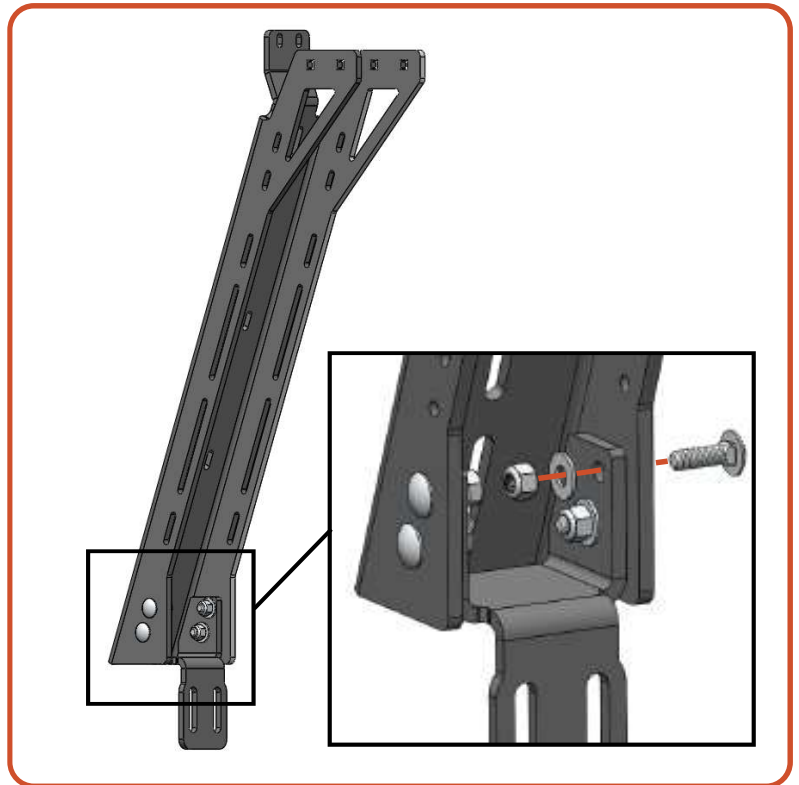
TOWER ASSEMBLY

01 CHAIR ASSEMBLY

Required Components:

- 2 Towers
- 2 Chair Brackets
- 8 5/16"-18 Carriage Bolts
- 8 5/16" Washers
- 8 5/16"-18 Nuts

Fasten each chair bracket to a tower using the supplied carriage bolts, washers, and nylock nuts. Tighten them with the bottom of the towers and chairs flush.



02 TOWER ASSEMBLY

Required Components:

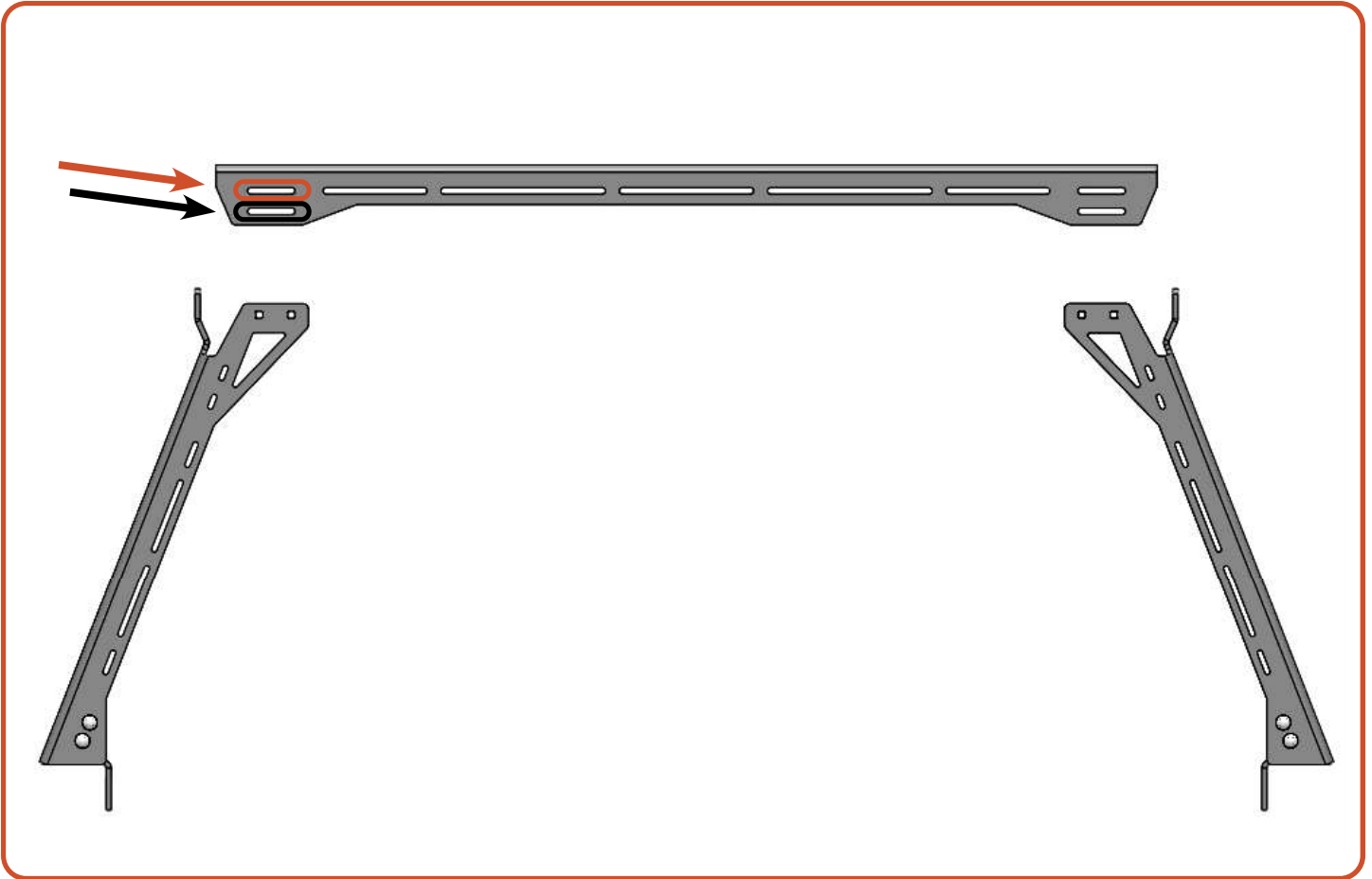
- 1 Crossbar
- 2 Chair Assemblies
- 4 5/16"-18 Carriage Bolts
- 4 5/16" Washers
- 4 5/16"-18 Nuts

Secure the crossbar to the 2 chair assemblies leaving the hardware loose so that it can be adjusted during a later step.

See next page for more detail.



For flush installations, use the **top set of mounting slots**. For tents, use the **lower set of slots** to raise the crossbars by 1". (Does not apply to mid height towers)



03 TOWER ASSEMBLY

Repeat steps 1 and 2 for all tower assemblies

CLAMP STYLE INSTALL

01 TOWERS

Required Components:

2 C-Clamps

per tower assembly

4 3/8"-16x1.5" Bolts

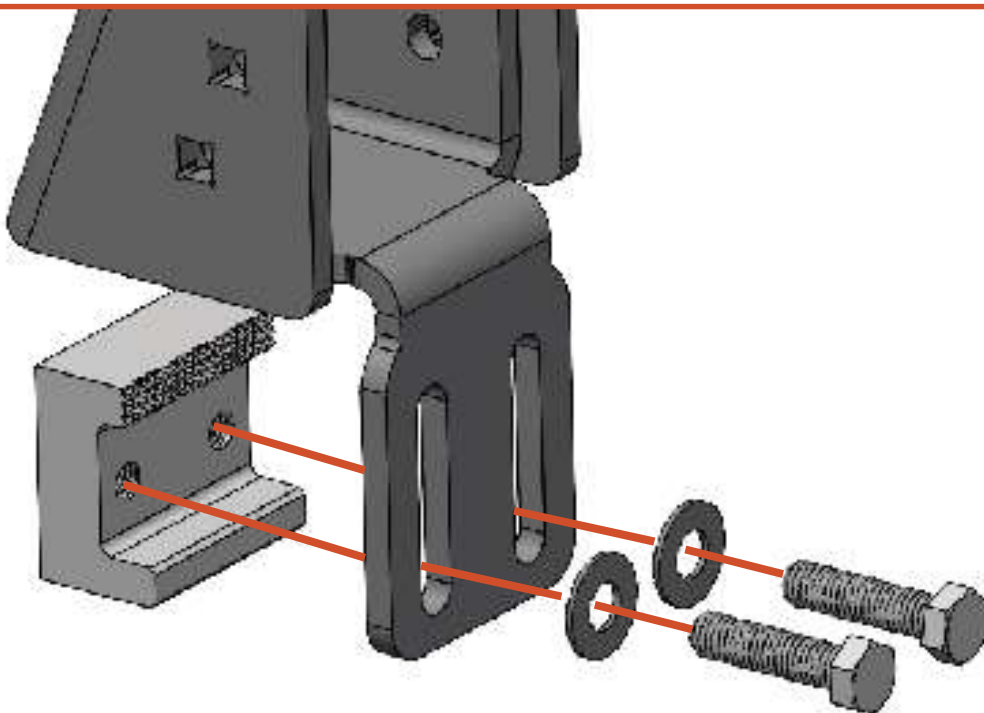
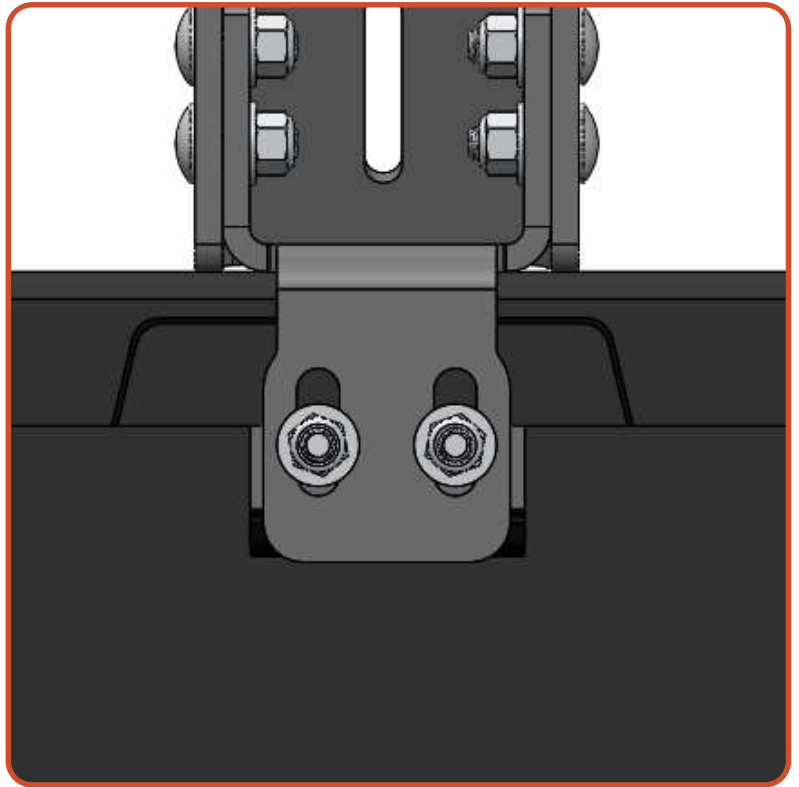
per tower assembly

4 3/8" Flat Washers

per tower assembly

Clamp a tower assembly to the bedside using the supplied bolts, washers, and C-Clamps. Notice the orientation of the C-Clamp in the diagrams to the right and below.

Note: Not all trucks have the indentation shown to the right.



TRACK STYLE INSTALL

01 BED NUTS

Required Components:

2 Bed Nuts
per tower assembly

Remove (or move) any existing accessories or tie-down points in the factory bed rail, and insert two of the supplied bed nuts per rail. Space the bed nuts out along the rail matching accessory panel spacing (diagram on next page).



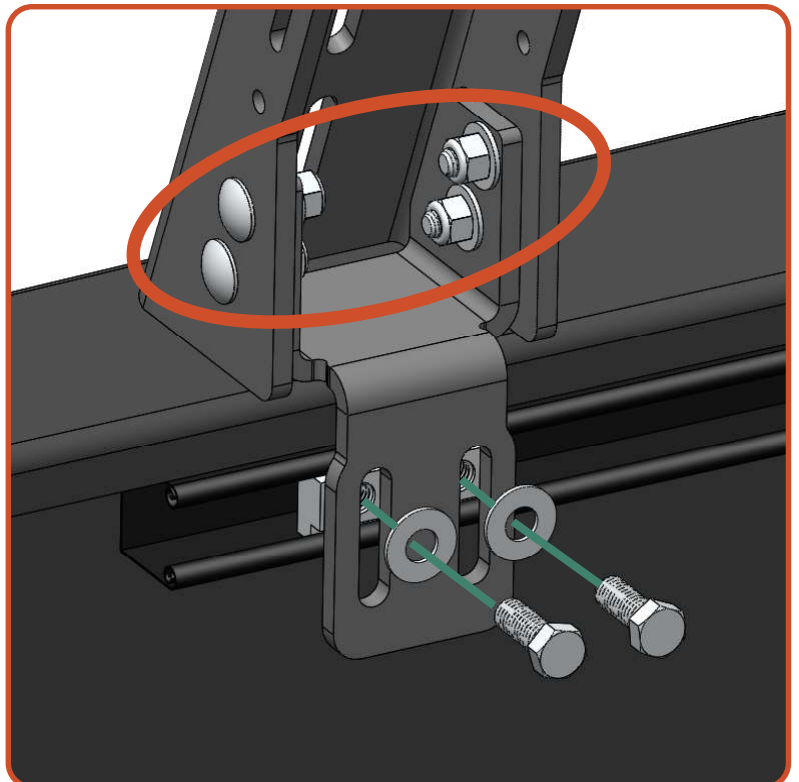
02 TOWERS

Required Components:

1 Tower Assemblies
4 3/8"-16 x 1.0 Hex Bolts
per tower assembly
8 3/8" Flat Washers
per tower assembly

Fasten each tower to the factory bed rail by bolting through the chair brackets into the bed nut using the supplied 3/8"-16 x 1.0" hex bolts and 3/8" washers. Leave the bolts loose for later adjustment. Repeat for all tower assemblies.

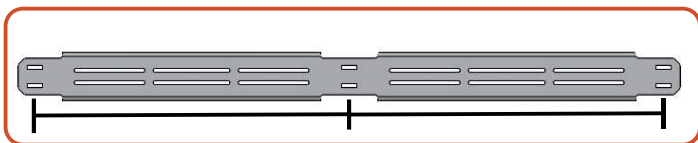
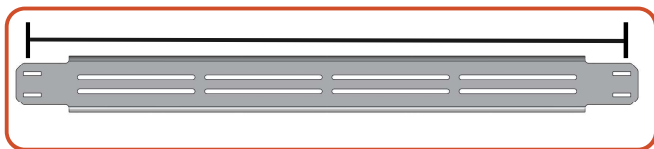
With the towers sitting flat on the surface of the bed, finish tightening the 5/16" nylock nuts connecting the towers to the chair bracket.



03 TOWER PLACEMENT

Measure the length of the accessory panel mounting holes to set the towers at the proper length along the bed rails.

Below are examples showing the measurements for a 5 ft and 6.5 ft bed with accessory panels.



INSTALLATION

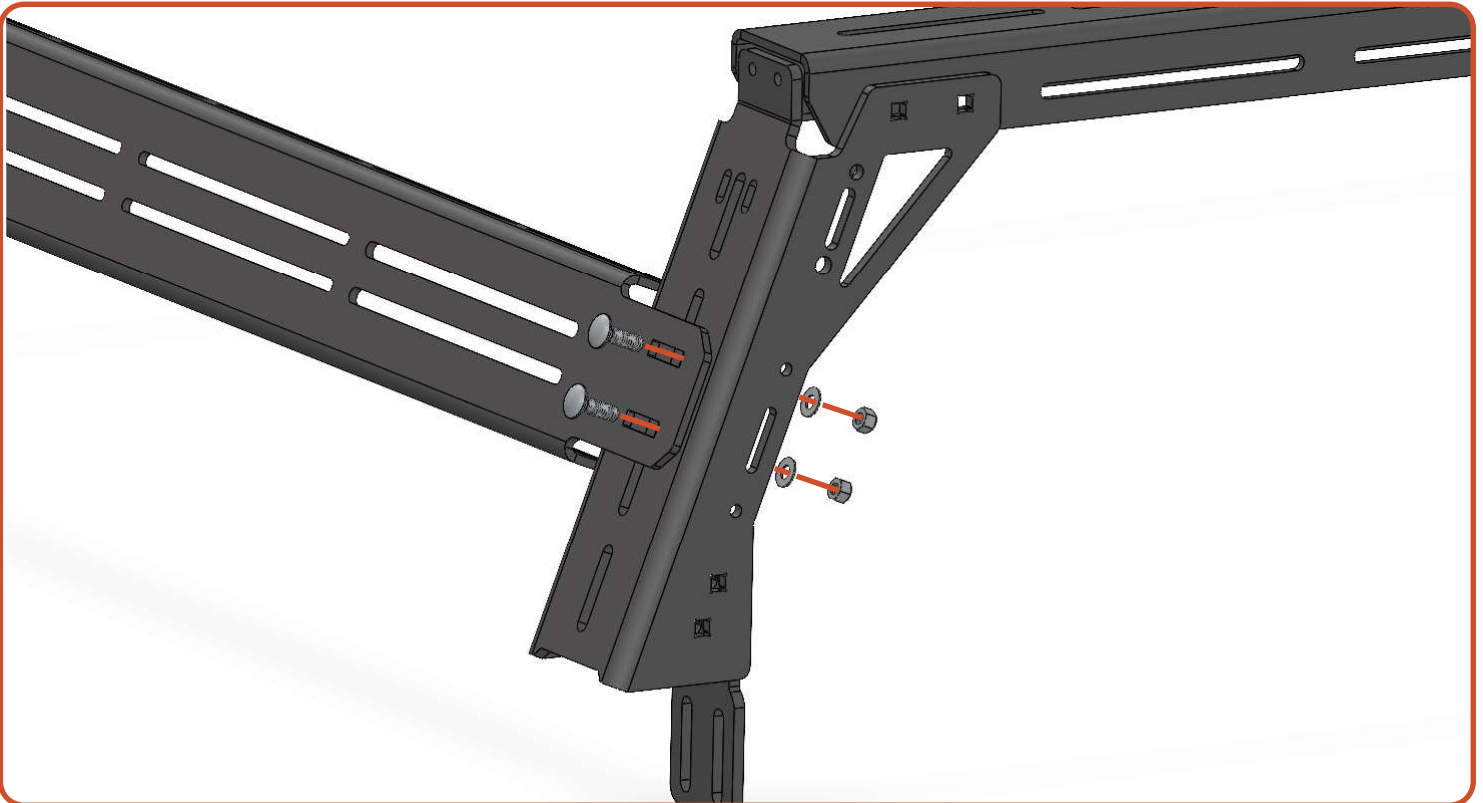
01 ACCESSORY PANELS

Required Components:

- All** Accessory Panels
- 2** 5/16"-18 Carriage Bolts
per tower
- 2** 5/16"-18 Nylock Nuts
per tower
- 2** 5/16" Flat Washers
per tower

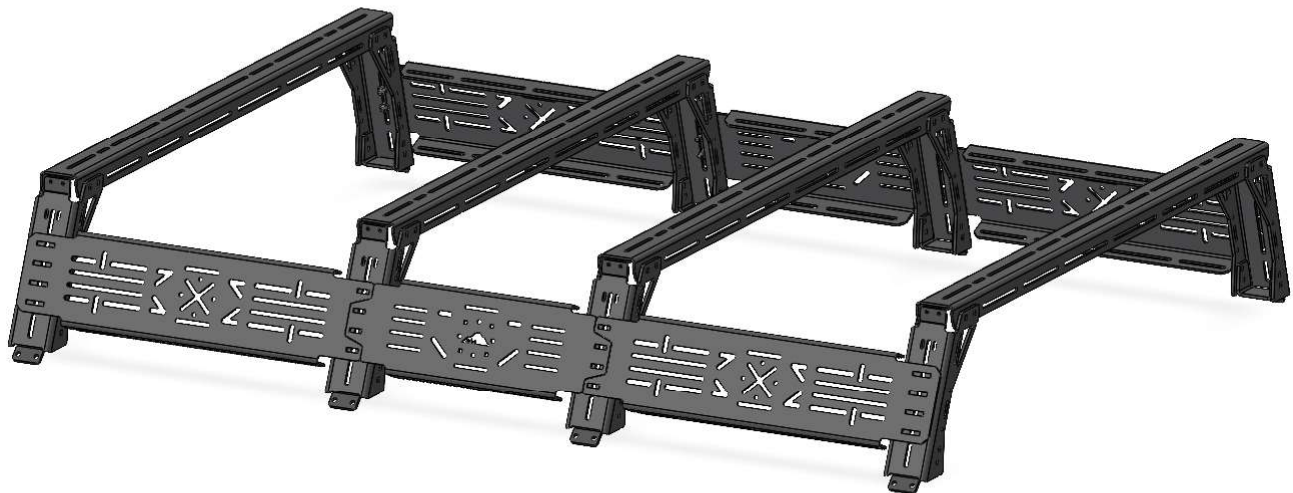
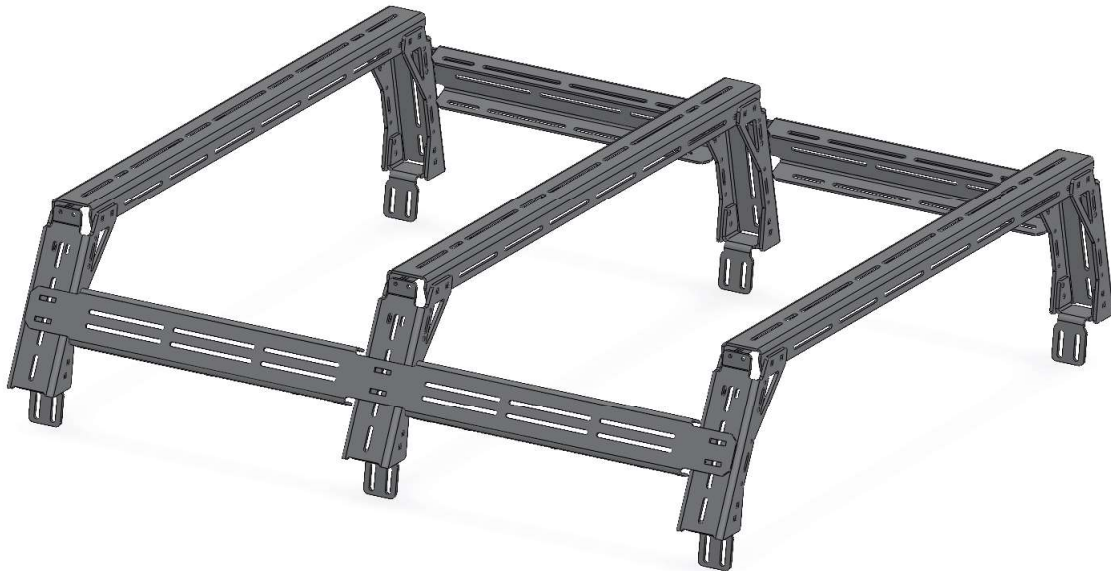
Install the accessory panels along the length of the bed rack assembly using the supplied carriage bolts, washers, and nylock nuts.

The same process applies to the installation of the XL accessory panels (optional upgrade).



Accessory panels vary depending on vehicle and rack configuration. Below shows several potential configurations of single or multi-piece panels.

Note: The images shown are illustrations.

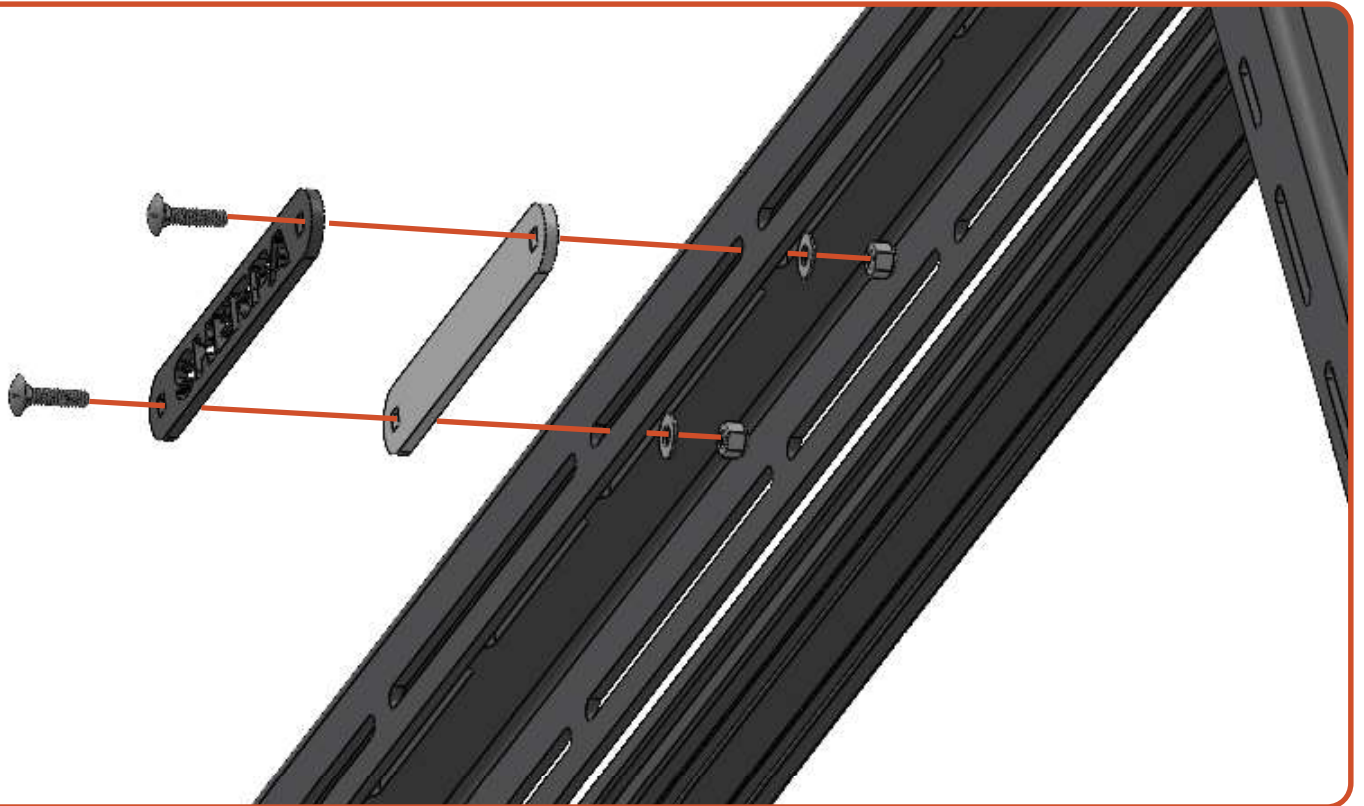


04 SHERPA NAME PLATE

Required Components:

- 2 1/4"-20 x 0.75" Carriage Bolts
- 2 1/4"-20 Nylock Nuts
- 2 1/4" Flat Washers
- 1 Sherpa Name Plates
- 1 Name Plate Backers

Using the 1/4"-20 x 0.75" carriage bolts, 1/4" flat washers, and nylock nuts attach the name plate and name plate backer to the rear bed rack cross bar.





NOW GET OUT THERE AND
EXPLORE.

WELCOME TO THE SHERPA FAMILY!
MAKE SURE TO FOLLOW US ON YOUR SOCIALS AND TAG US IN YOUR ADVENTURES.

All products built and designed by Sherpa Equipment Company are intended for off-road use and should be assembled, installed, and used according to Sherpa Equipment Company's recommendations. Sherpa Equipment Company's products should be used safely with good judgment towards others and surroundings.

By installing Sherpa Equipment Company's products on your vehicle you assume all liability. Sherpa Equipment Company will not be held liable for damages or loss associated with the installation or use of its products. It is recommended that you inspect your roof rack within the first 100 miles of installation and every 500 miles after.