



SHERPA
PREMIUM RACK SYSTEMS

RACK HEIGHT

2G/3G/4G

TACOMA

BEDRACK SYSTEM INSTALL GUIDE

HARDWARE CHECKLIST

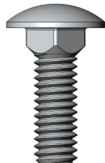
8

3/8"-16x1"
HEX BOLTS
(15 ft.-lbs)



40

5/16"-18x1"
CARRIAGE
BOLTS
(130 in.-lbs)



28

1/4"-20x1"
SOCKET BOLTS
(70 in.-lbs)



2

1/4"-20x9/16"
HEX BOLTS
(70 in.-lbs)



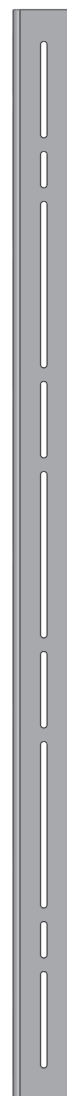
2

ACCESSORY
BRACES



2

CROSSBARS
(BENT)



5

CROSSBARS
(EXTRUDED)



2

SIDEPLATES



2

1/4"-20 TNUT



40

5/16"-18
NUTS



10

1/4"-20
NUTS



8

3/8" FLAT
WASHERS



40

5/16" FLAT
WASHERS



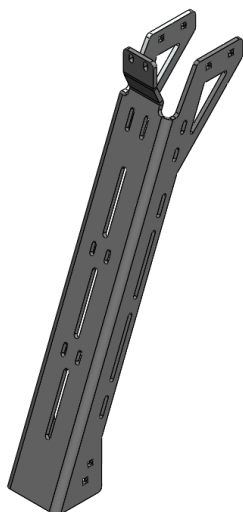
40

1/4" FLAT
WASHERS



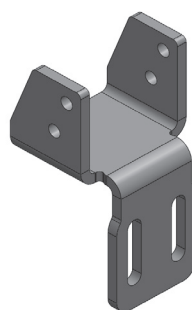
4

RACK-HEIGHT
TOWERS



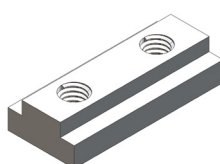
4

CHAIR
BRACKETS



4

BEDNUTS



1

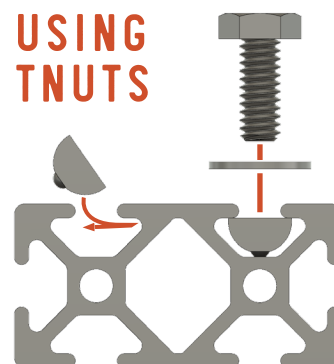
Name Plate



BEFORE YOU START

The below assembly images may differ slightly in appearance from actual product.

USING
TNUTS



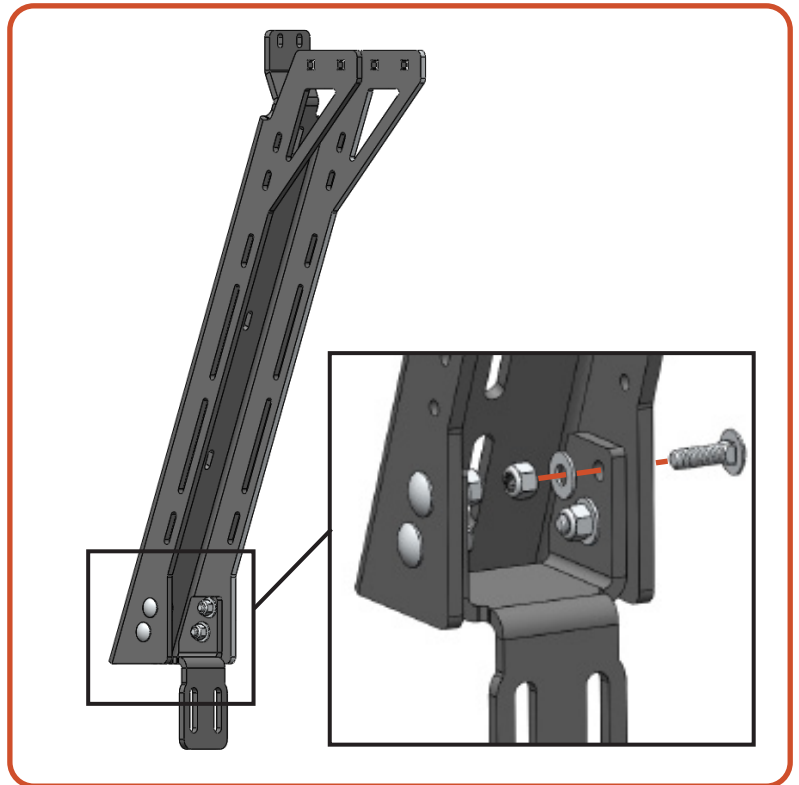
TOWER ASSEMBLY

01 CHAIR ASSEMBLY

Required Components:

- 2 Towers
- 2 Chair Brackets
- 8 5/16"-18 Carriage Bolts
- 8 5/16" Washers
- 8 5/16"-18 Nuts

Fasten each chair bracket to a tower using the supplied carriage bolts, washers, and nylock nuts. Tighten them with the bottom of the towers and chairs flush.



02 TOWER ASSEMBLY

Required Components:

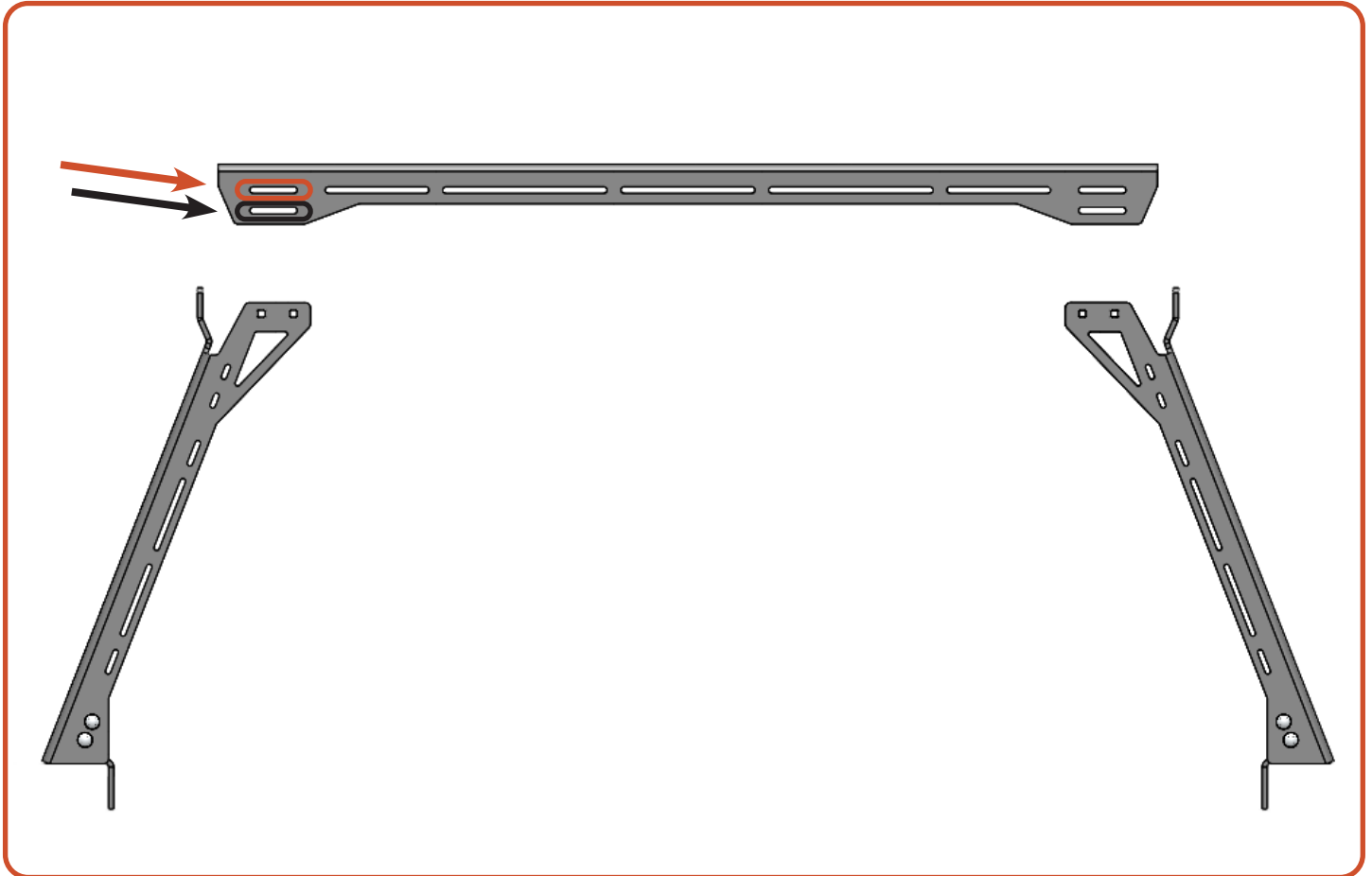
- 1 Crossbar
- 2 Chair Assemblies
- 4 5/16"-18 Carriage Bolts
- 4 5/16" Washers
- 4 5/16"-18 Nuts

Secure the crossbar to the 2 chair assemblies leaving the hardware loose so that it can be adjusted during a later step.

See next page for more detail.



For flush installations, use the **top set of mounting slots**. For tents, use the **lower set of slots** to raise the crossbars by 1". (Does not apply to mid height towers)



03 TOWER ASSEMBLY

Repeat steps 1 and 2 for all tower assemblies

TRACK STYLE INSTALL

01 BED NUTS

Required Components:

2 Bed Nuts
per tower assembly

Remove (or move) any existing accessories or tie-down points in the factory bed rail, and insert two of the supplied bed nuts per rail. Space the bed nuts out along the rail matching accessory panel spacing (diagram on next page).



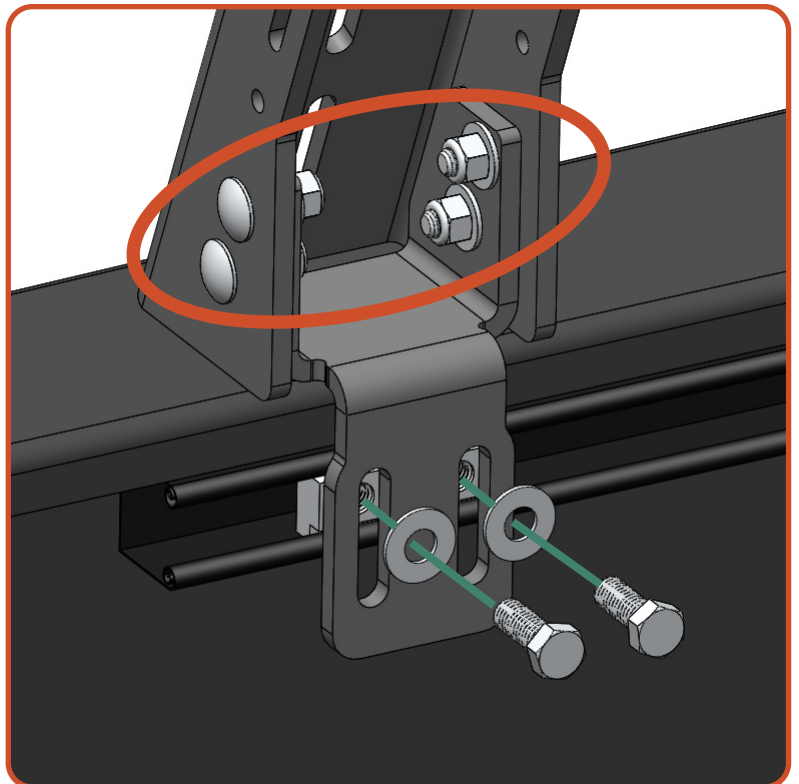
02 TOWERS

Required Components:

1 Tower Assemblies
4 3/8"-16 x 1.0 Hex Bolts
per tower assembly
8 3/8" Flat Washers
per tower assembly

Fasten each tower to the factory bed rail by bolting through the chair brackets into the bed nut using the supplied 3/8"-16 x 1.0" hex bolts and 3/8" washers. Leave the bolts loose for later adjustment. Repeat for all tower assemblies.

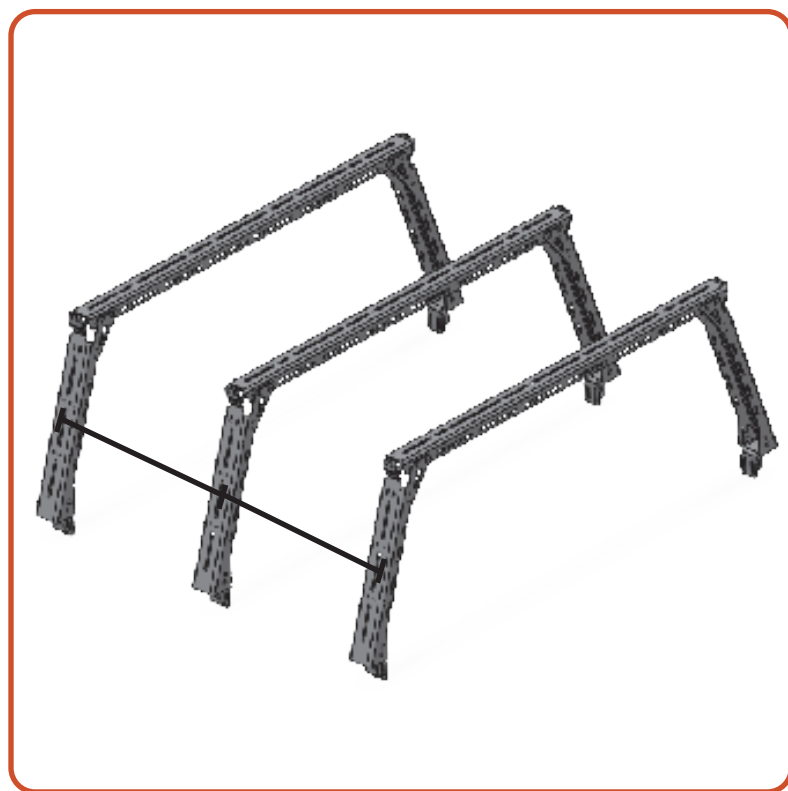
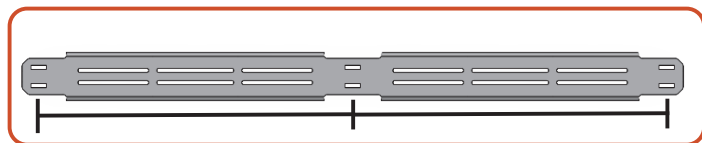
With the towers sitting flat on the surface of the bed, finish tightening the 5/16" nylock nuts connecting the towers to the chair bracket.



03 TOWER PLACEMENT

Measure the length of the accessory panel mounting holes to set the towers at the proper length along the bed rails.

Below are examples showing the measurements for a 5 ft and 6.5 ft bed with accessory panels.



INSTALLATION

01 SIDEPLATES

Required Components:

4 1/4"-20 Socket Button

per tower assembly

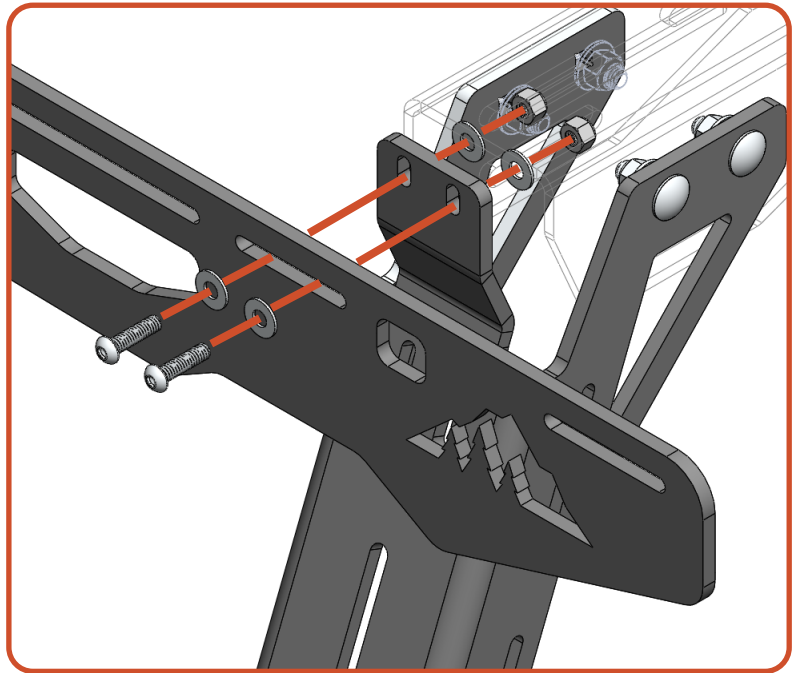
4 1/4"-20 Nylock Nut

per tower assembly

8 1/4" Flash Washer

per tower assembly

Fasten the sideplates to the towers using the supplied 1/4"-20 x 1" socket buttons, flat washers, and nylock nuts.



02 EXTRUSION CROSSBARS

Required Components:

All Extrusion Crossbar

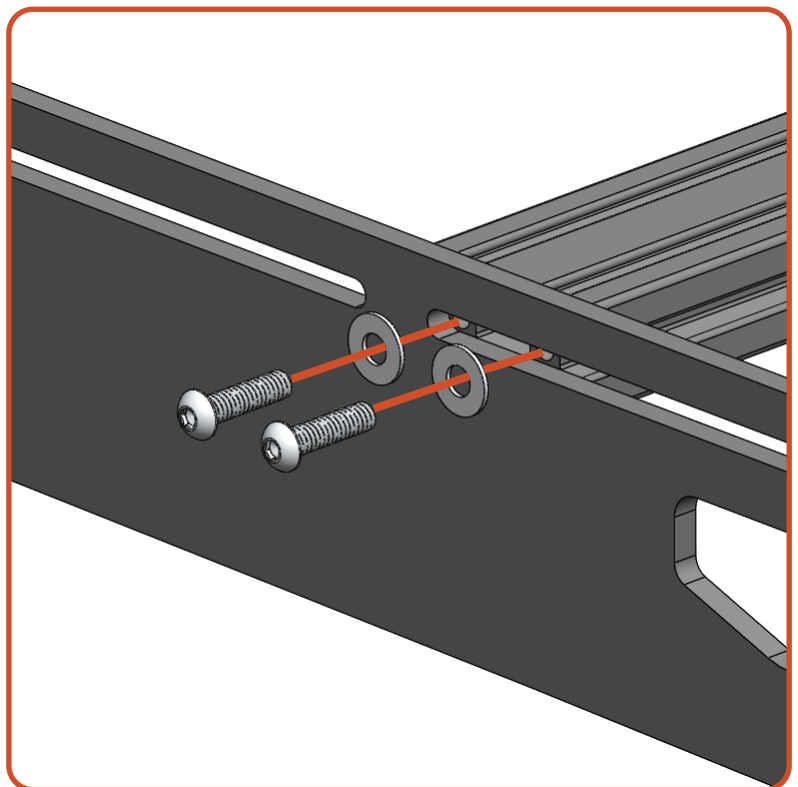
4 1/4"-20 Socket Button

per extrusion crossbar

4 1/4" Flash Washer

per extrusion crossbar

Install the extrusion crossbars in the slots of the sideplates with the included 1/4"-20 socket buttons and 1/4" flat washers. Distribute the bars along the length of the rack as desired.



03 ACCESSORY PANELS

Required Components:

2 5/16"-18 Carriage Bolts

per tower

2 5/16"-18 Nylock Nuts

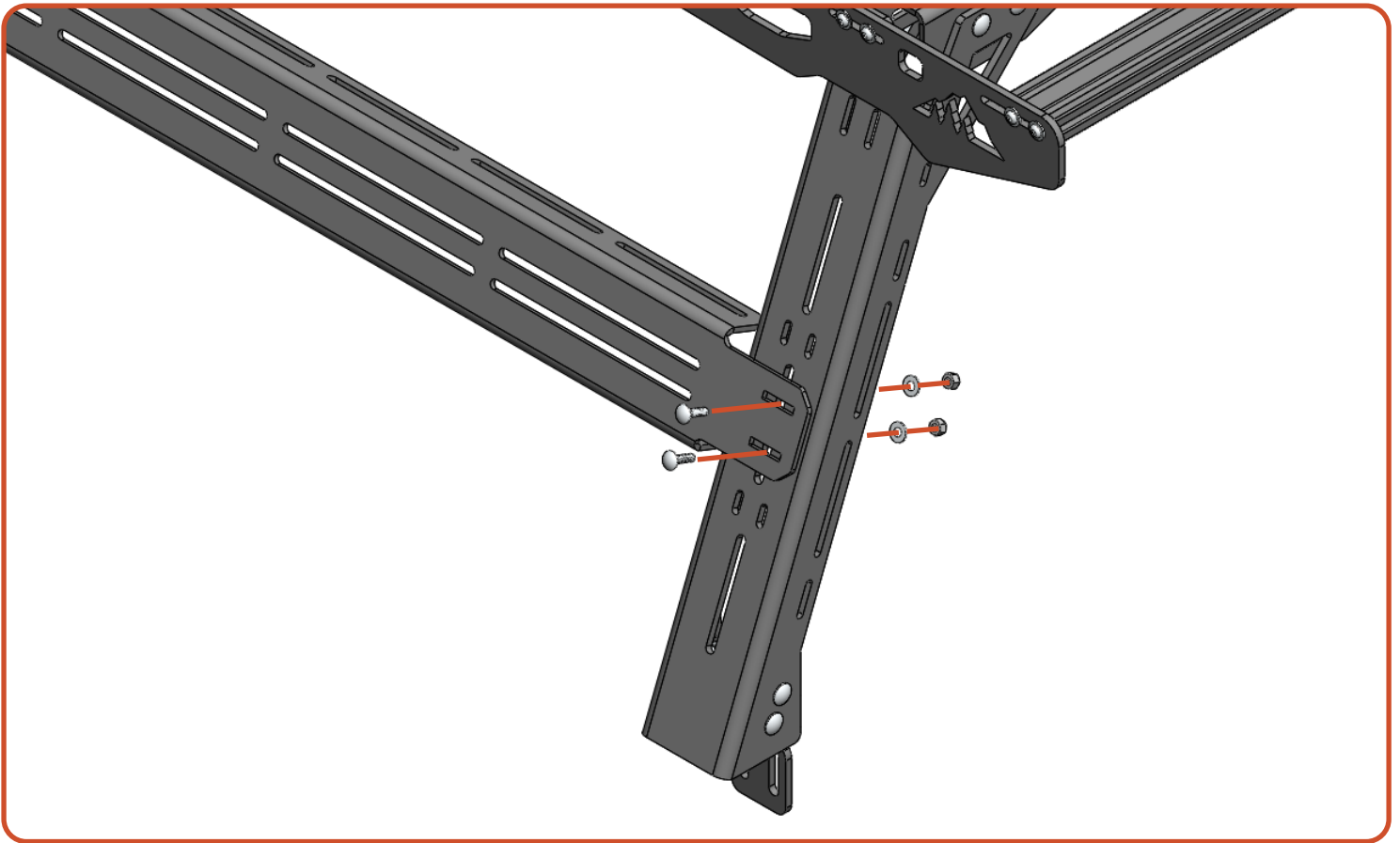
per tower

2 5/16" Flat Washers

per tower

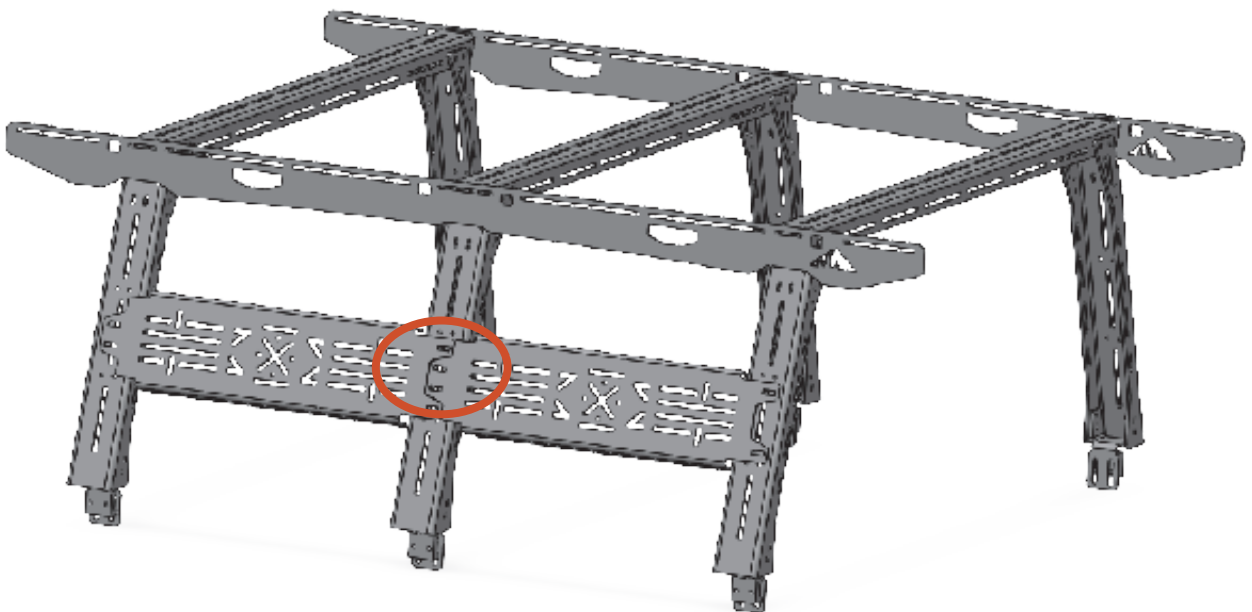
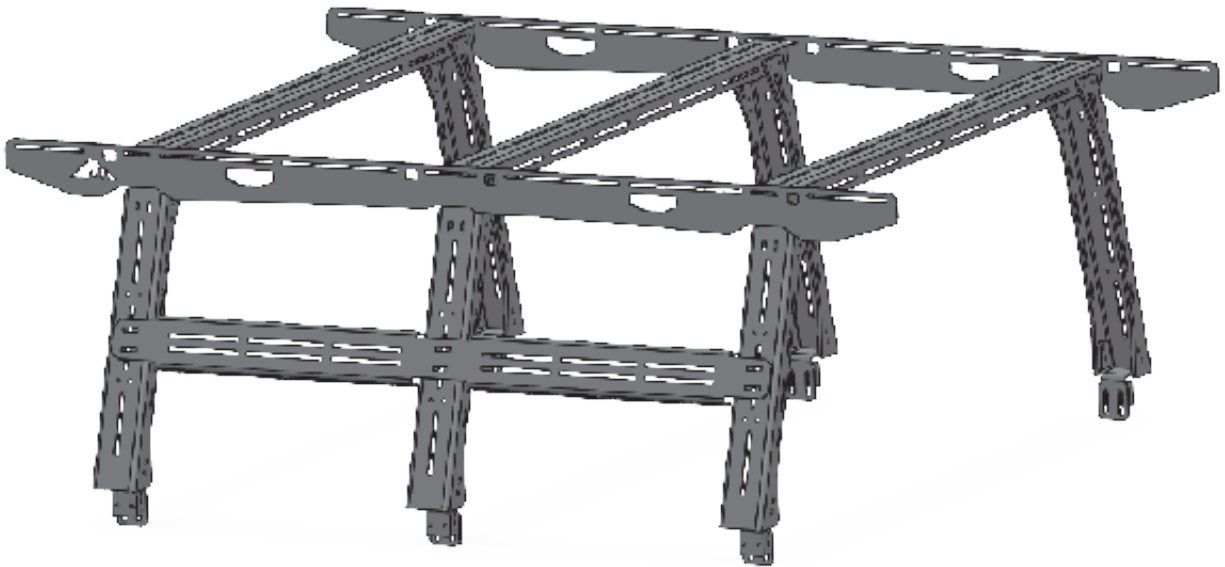
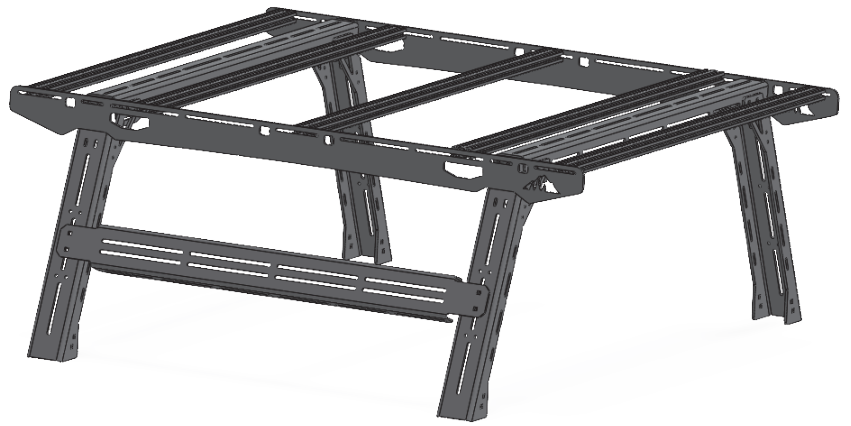
Install the accessory panels along the length of the bed rack assembly using the supplied carriage bolts, washers, and nylock nuts.

The same process applies to the installation of the XL accessory panels (optional upgrade).



Accessory panels vary depending on vehicle and rack configuration. Below shows several potential configurations of single or multi-piece panels.

Note: The images shown are illustrations.

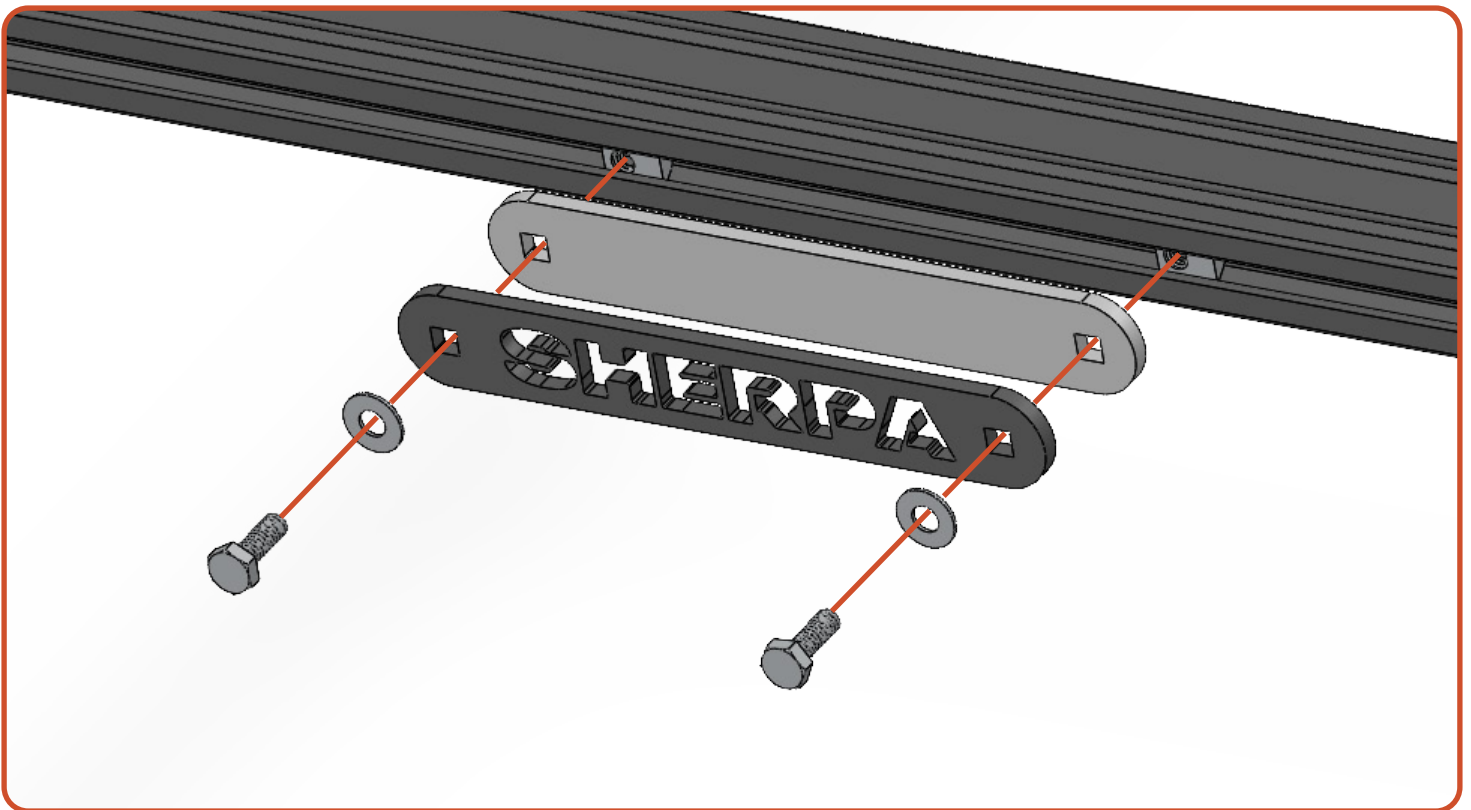


SHERPA NAME PLATE

Required Components:

- 2 1/4"-20 x 9/16" Hex Bolts
- 2 1/4"-20 Nuts
- 2 1/4" Flat Washers
- 1 Sherpa Name Plates
- 1 Name Plate Backers

Place the nuts into the rear most crossbar on the rack. Using the 1/4"-20 x 0.75" socket buttons, and 1/4" flat washers attach the name plate and name plate backer to the cross bar.





NOW GET OUT THERE AND
EXPLORE.

WELCOME TO THE SHERPA FAMILY!
MAKE SURE TO FOLLOW US ON YOUR SOCIALS AND TAG US IN YOUR ADVENTURES.

All products built and designed by Sherpa Equipment Company are intended for off-road use and should be assembled, installed, and used according to Sherpa Equipment Company's recommendations. Sherpa Equipment Company's products should be used safely with good judgment towards others and surroundings.

By installing Sherpa Equipment Company's products on your vehicle you assume all liability. Sherpa Equipment Company will not be held liable for damages or loss associated with the installation or use of its products. It is recommended that you inspect your roof rack within the first 100 miles of installation and every 500 miles after.