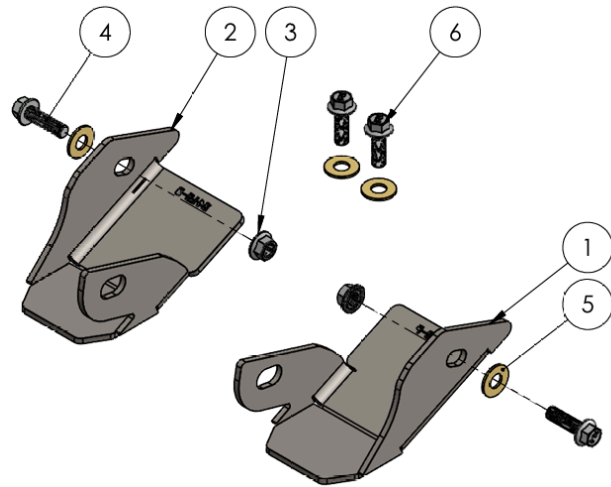


RCI 24+ LAND CRUISER LOWER LINK SKID - FRONT

INSTALLATION GUIDE

ITEM NO.	DESCRIPTION	QTY.
1	24+ Land Cruiser Front Lower Link Skid Passenger	1
2	24+ Land Cruiser Front Lower Link Skid Driver	1
3	M10 x 1.5 Serrated Flange Nut	2
4	M10-1.5 X 35MM HEX FLANGE BOLT	2
5	3/8 USS FLAT WASHER	4
6	M10-1.25 X 30MM HEX FLANGE	2



****Use hand tools, impact wrenches may cause damage if over torqued.****

Installation

- 1) Begin by unpacking and removing all components and hardware. Please verify that all hardware and mounting components are present. Reference your original order invoice and verify all items are accounted for.
- 2) Begin by unpacking and removing all components and hardware. Please verify that all hardware, components, and mounting components are present. Please reference your original order invoice and verify all items are accounted for.
 - a) **** M10 x 1.25 bolts and their washers will NOT be used ****
- 3) Starting on the driver side, collect one (1) M10 x 30 x 1.5 bolt, one (1) 7/16" washer, and one (1) M10 serrated flange nut.
 - a) Use a 15mm open end wrench and some tape to secure the nut to assist in the installation



Figure 1: Tape M10 nut on 15mm wrench.

- 4) Fish the nut into the lower link mount and align it with the hole on the skid plate.
Install the M10x35 bolt and 7/16" washer into the serrated nut and tighten.
 - a) Tighten enough to where the serrated nut grabs, but will not slip.



Figure 2: Nut installation and access.

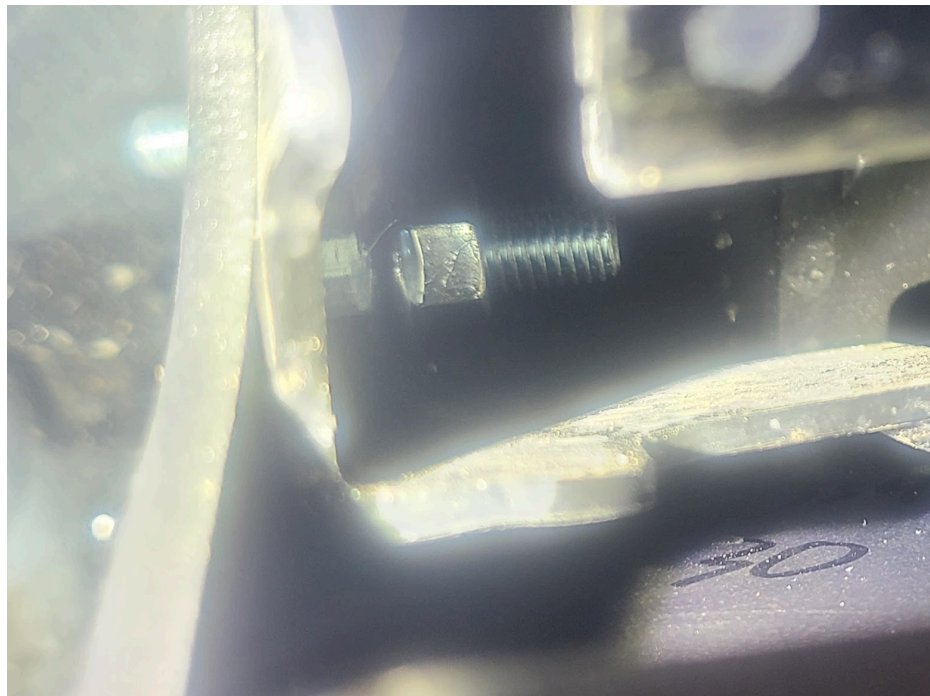


Figure 3: Tightened Nut.

- 5) Use a 19mm socket to back the rear link bolt out until roughly 2 threads are still exposed.



Figure 4: Backing out of the rear link bolt.

- 6) Pivoting about the first installed bolt, align the skid up with the rear link bolt.

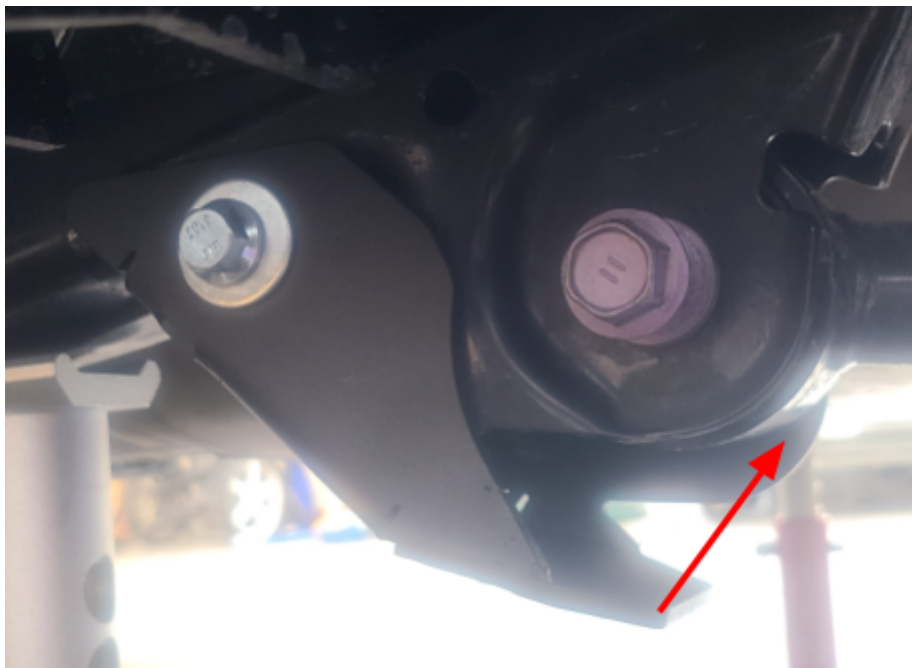


Figure 5: Pivoting of the

- 7) Tap the rear link bolt in to catch the skid plate.

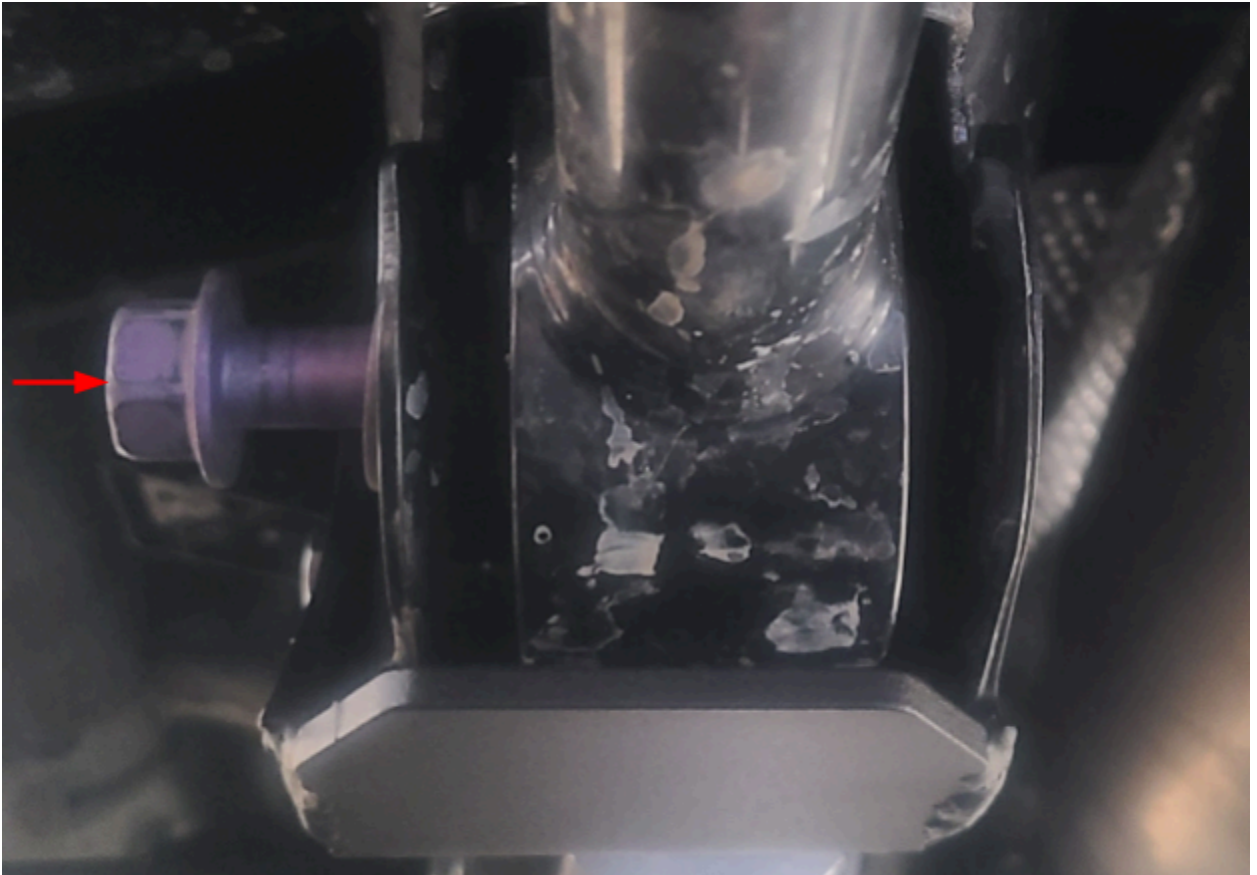


Figure 6: Bolt to fully seat.

- 8) Finish tightening the M10 bolt that was first installed.
- 9) Finish the driver side install by fully tightening the lower link bolt to its factory torque spec.
- 10) Repeat the process for the passenger side of the vehicle.

Enjoy your new RCI protection!



Share your new install with us on social media!

We love seeing our products out in the wild!



www.rcimetalworks.com

sales@rcioffroad.com

970-797-3089



REV: 1 | 9/29/2022

Disclaimer: The products sold by RCI Metalworks are intended for off-road use only, should not be modified, and are for use only on the vehicle(s) specifically stated. RCI Metalworks makes no warranties express or implied, including of fitness for a particular purpose or merchantability. RCI Metalworks will not be liable for any damages arising out of the use or misuse of its products. It is the customers' responsibility to ensure the products are safely and properly attached to the vehicle, and all products should be installed by trained professionals. We strive to maintain extremely high quality standards; however, all RCI Metalworks products are individually handcrafted, may vary slightly, and may contain minor imperfections. Due to the nature of raw aluminum, the material may have minor scratches and other blemishes caused by the manufacturing process, especially on the back side of product. RCI Metalworks is constantly seeking to improve its products and reserves the right to make changes to any product.