


Sway Bar Disconnect Skid  
(Lower than front skid)

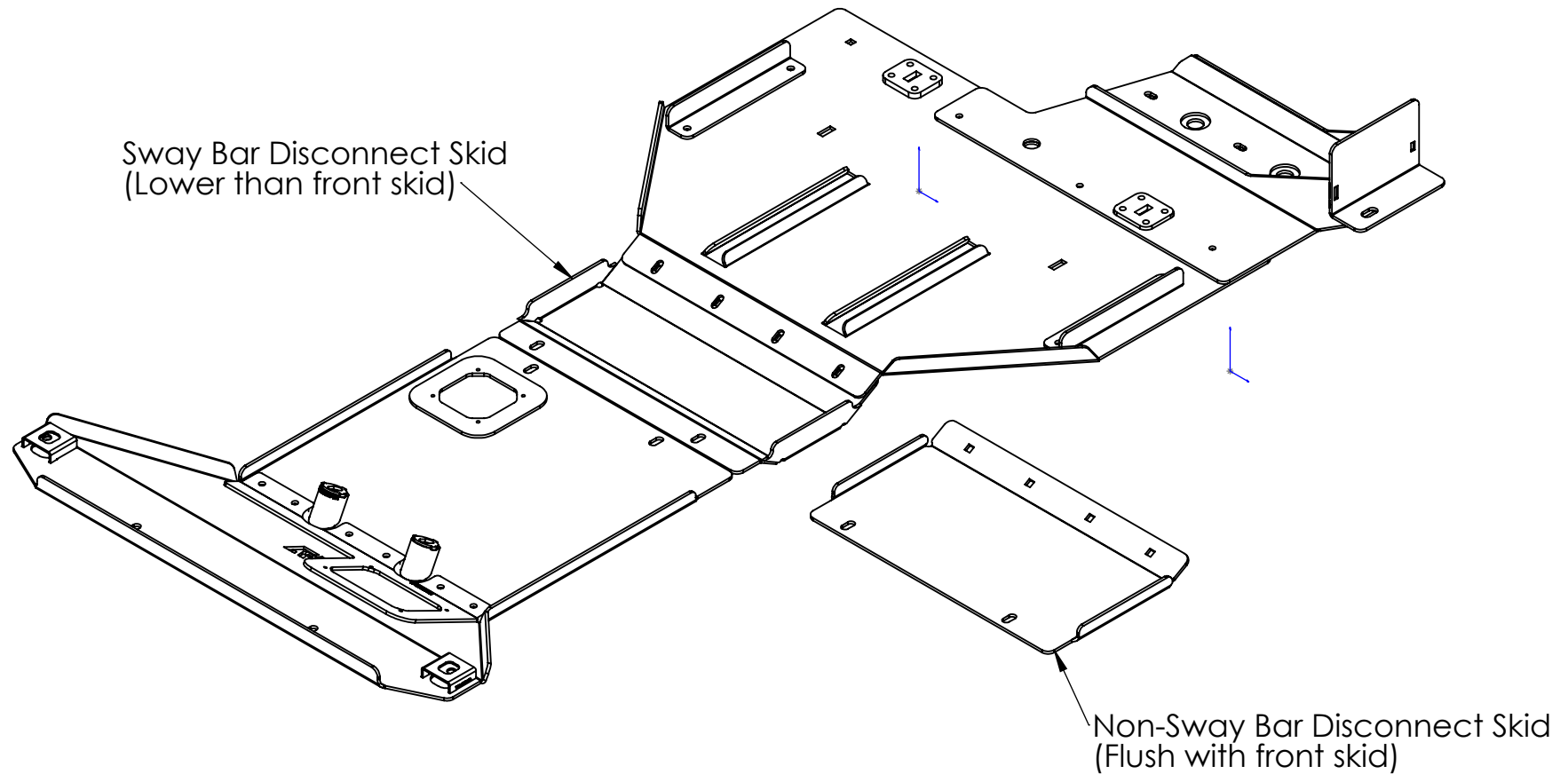
Non-Sway Bar Disconnect Skid  
(Flush with front skid)

**24+ Tacoma & Land Cruiser 250 Series Skid Plates**

- **Non-Hybrid** rear skid plate & crosmember shown.
- Sway bar disconnect and non-sway bar disconnect skid options shown.

 <b>PROPRIETARY AND CONFIDENTIAL</b> THE INFORMATION CONTAINED IN THIS DRAWING IS THE SOLE PROPERTY OF C4 FABRICATION, LLC. ANY REPRODUCTION IN PART OR AS A WHOLE WITHOUT THE WRITTEN PERMISSION OF C4 FABRICATION, LLC IS PROHIBITED.		NAME	DATE	<b>C4 FABRICATION</b>		
	DRAWN	EJK	3/19/25			
	CHECKED				TITLE: 24+ Tacoma & Land Cruiser 250 Series Skid Plates	
	ENG APPR.					
	MFG APPR.					
MATERIAL	Q.A.			SIZE <b>A</b>		
	COMMENTS:					
				DWG. NO.		REV
				DO NOT SCALE DRAWING		SHEET 1 OF 8

B




B

## 24+ Tacoma & Land Cruiser 250 Series Skid Plates

- **Hybrid** rear skid plate & crossmember shown.
- Sway bar disconnect and non-sway bar disconnect skid options shown.

A

 <b>PROPRIETARY AND CONFIDENTIAL</b> THE INFORMATION CONTAINED IN THIS DRAWING IS THE SOLE PROPERTY OF C4 FABRICATION, LLC. ANY REPRODUCTION IN PART OR AS A WHOLE WITHOUT THE WRITTEN PERMISSION OF C4 FABRICATION, LLC IS PROHIBITED.  MATERIAL	DRAWN	NAME EJK	DATE 3/19/25	<b>C4 FABRICATION</b>  TITLE: 24+ Tacoma & Land Cruiser 250 Series Skid Plates  SIZE <b>A</b> DWG. NO. REV	
	CHECKED				
	ENG APPR.				
	MFG APPR.				
	Q.A.				
COMMENTS:				DO NOT SCALE DRAWING	SHEET 2 OF 8

A

2

1

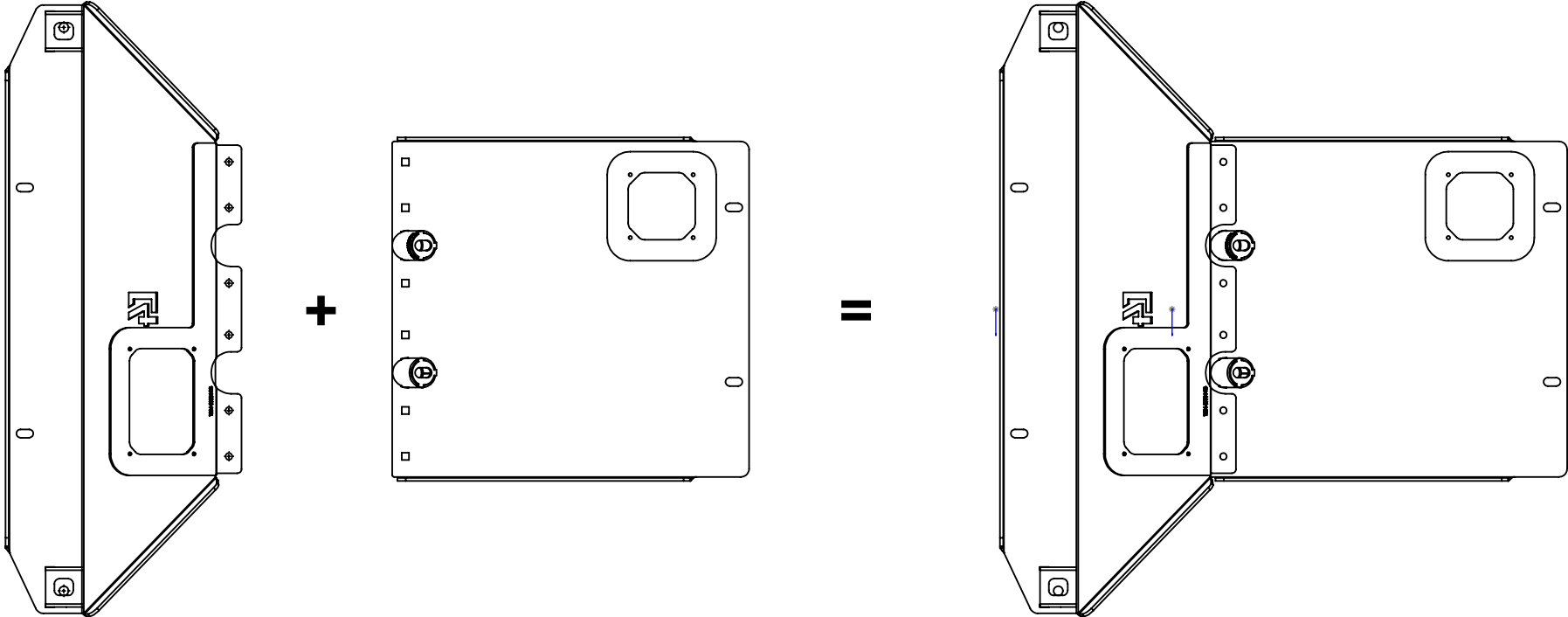
2

1

Front Skid Plate Assembly

-Bolt the front skid plate together using supplied  
(6) 3/8" Carriage head bolts, flat washers, and flange  
nuts respectively. Bolt access covers on using supplied  
(8) 1/4"-20 countersunk bolts and countersunk washers.


B



B

A

A

<div></div> <div>PROPRIETARY AND CONFIDENTIAL</div> <div>THE INFORMATION CONTAINED IN THIS DRAWING IS THE SOLE PROPERTY OF C4 FABRICATION, LLC. ANY REPRODUCTION IN PART OR AS A WHOLE WITHOUT THE WRITTEN PERMISSION OF C4 FABRICATION, LLC IS PROHIBITED.</div>	NAME	DATE	<div>C4 FABRICATION</div> <div>TITLE:</div> <div>24+ Tacoma &amp; Land Cruiser 250 Series Skid Plates</div>			
	DRAWN	EJK				3/19/25
	CHECKED			<div>SIZE</div> <div>A</div> <div>DWG. NO.</div> <div>REV</div>		
	ENG APPR.					
	MFG APPR.					
Q.A.			<div>DO NOT SCALE DRAWING</div> <div>SHEET 3 OF 8</div>			
COMMENTS:						

2

1

2

1

### Front Skid Plate

Mount skid plate to pickup using supplied hardware in shown locations below.

- (2) Square Washer Plate
- (2) 1/2" Flat Washer
- (2) Factory Bolts

B

B


- Mounting Points Pickups  
w/ Front Crossmember
- (2) Factory Bolts
  - (2) 3/8 Flat Washer

- (2) M8 Countersunk Bolt
- (2) Countersunk Washer

- (2) Factory M8 Bolts
- (2) 3/8 " Flat Washer

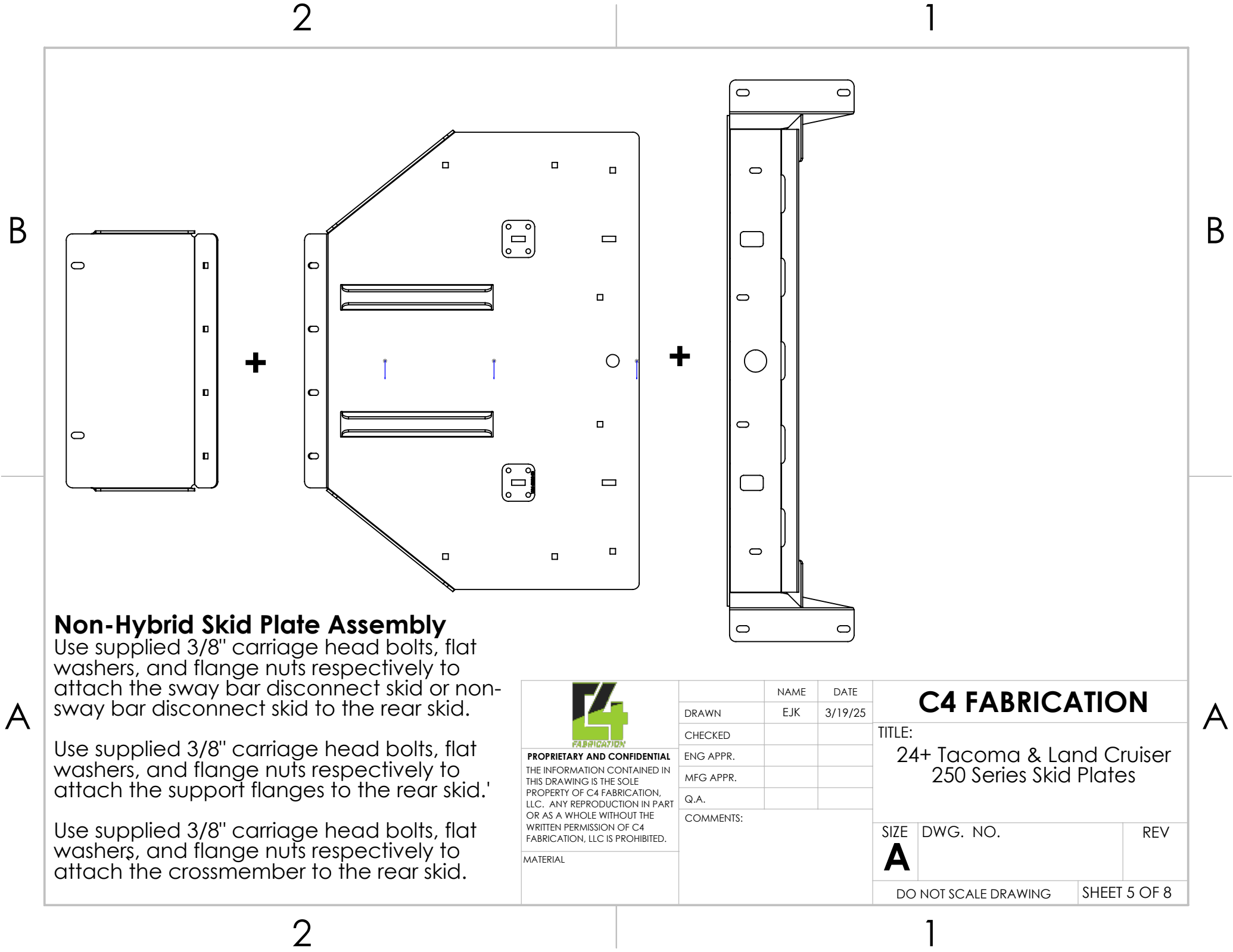
A

A

 <b>PROPRIETARY AND CONFIDENTIAL</b> THE INFORMATION CONTAINED IN THIS DRAWING IS THE SOLE PROPERTY OF C4 FABRICATION, LLC. ANY REPRODUCTION IN PART OR AS A WHOLE WITHOUT THE WRITTEN PERMISSION OF C4 FABRICATION, LLC IS PROHIBITED.  MATERIAL		NAME	DATE	<b>C4 FABRICATION</b>		
	DRAWN	EJK	3/19/25			
	CHECKED				TITLE:	
	ENG APPR.				24+ Tacoma & Land Cruiser	
	MFG APPR.				250 Series Skid Plates	
Q.A.				SIZE	DWG. NO.	REV
COMMENTS:				<b>A</b>		
				DO NOT SCALE DRAWING		SHEET 4 OF 8

2

1




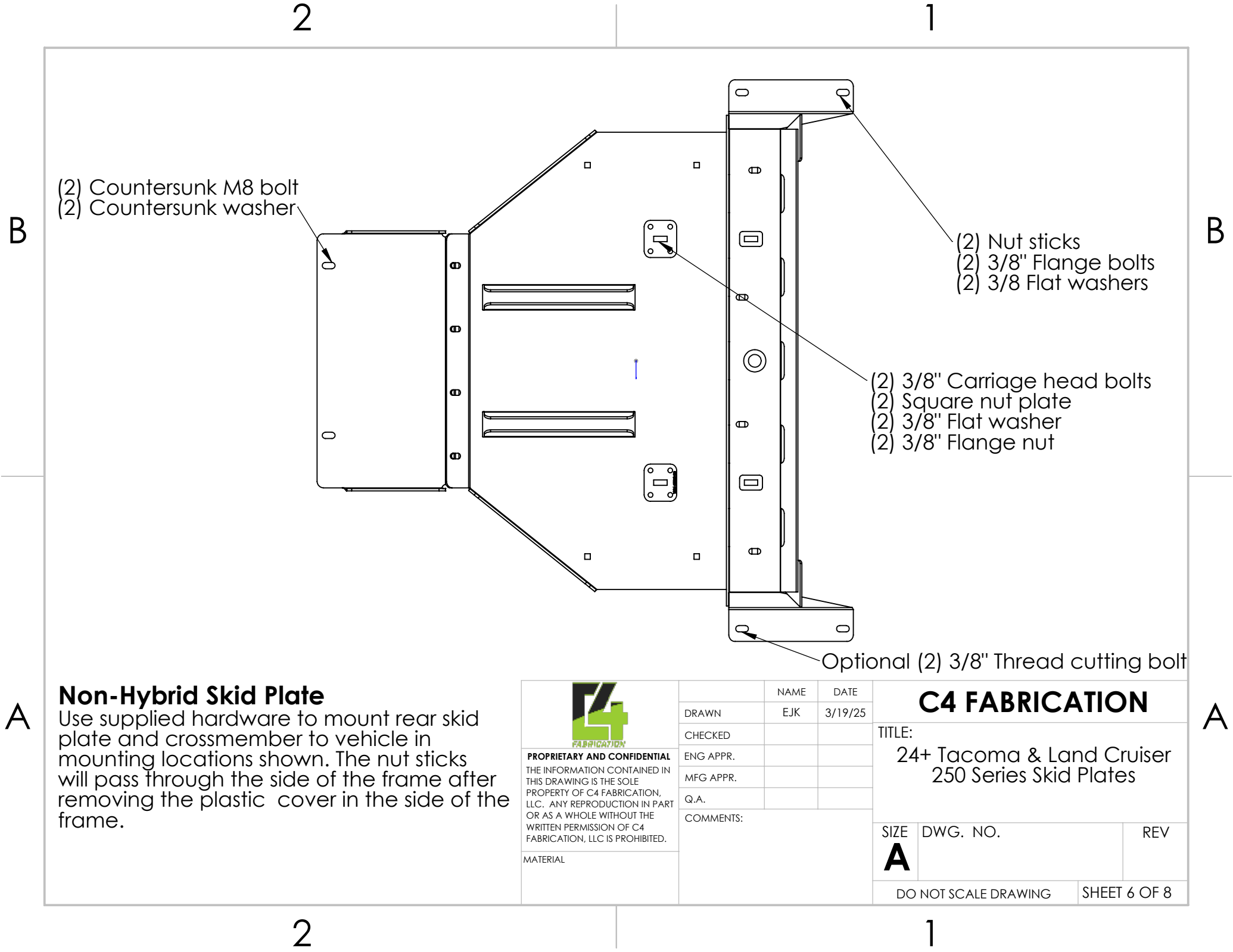
**Non-Hybrid Skid Plate Assembly**

Use supplied 3/8" carriage head bolts, flat washers, and flange nuts respectively to attach the sway bar disconnect skid or non-sway bar disconnect skid to the rear skid.

Use supplied 3/8" carriage head bolts, flat washers, and flange nuts respectively to attach the support flanges to the rear skid.'

Use supplied 3/8" carriage head bolts, flat washers, and flange nuts respectively to attach the crossmember to the rear skid.

<div></div> <div>PROPRIETARY AND CONFIDENTIAL</div> <div>THE INFORMATION CONTAINED IN THIS DRAWING IS THE SOLE PROPERTY OF C4 FABRICATION, LLC. ANY REPRODUCTION IN PART OR AS A WHOLE WITHOUT THE WRITTEN PERMISSION OF C4 FABRICATION, LLC IS PROHIBITED.</div>		NAME	DATE	<div>C4 FABRICATION</div>	
	DRAWN	EJK	3/19/25		
	CHECKED			TITLE: <div>24+ Tacoma &amp; Land Cruiser 250 Series Skid Plates</div>	
	ENG APPR.				
	MFG APPR.				
Q.A.			SIZE <div>A</div> <div>DWG. NO.</div> <div>REV</div>		
COMMENTS:					
MATERIAL				DO NOT SCALE DRAWING	
				SHEET 5 OF 8	



**Non-Hybrid Skid Plate**

Use supplied hardware to mount rear skid plate and crossmember to vehicle in mounting locations shown. The nut sticks will pass through the side of the frame after removing the plastic cover in the side of the frame.



**PROPRIETARY AND CONFIDENTIAL**  
THE INFORMATION CONTAINED IN THIS DRAWING IS THE SOLE PROPERTY OF C4 FABRICATION, LLC. ANY REPRODUCTION IN PART OR AS A WHOLE WITHOUT THE WRITTEN PERMISSION OF C4 FABRICATION, LLC IS PROHIBITED.

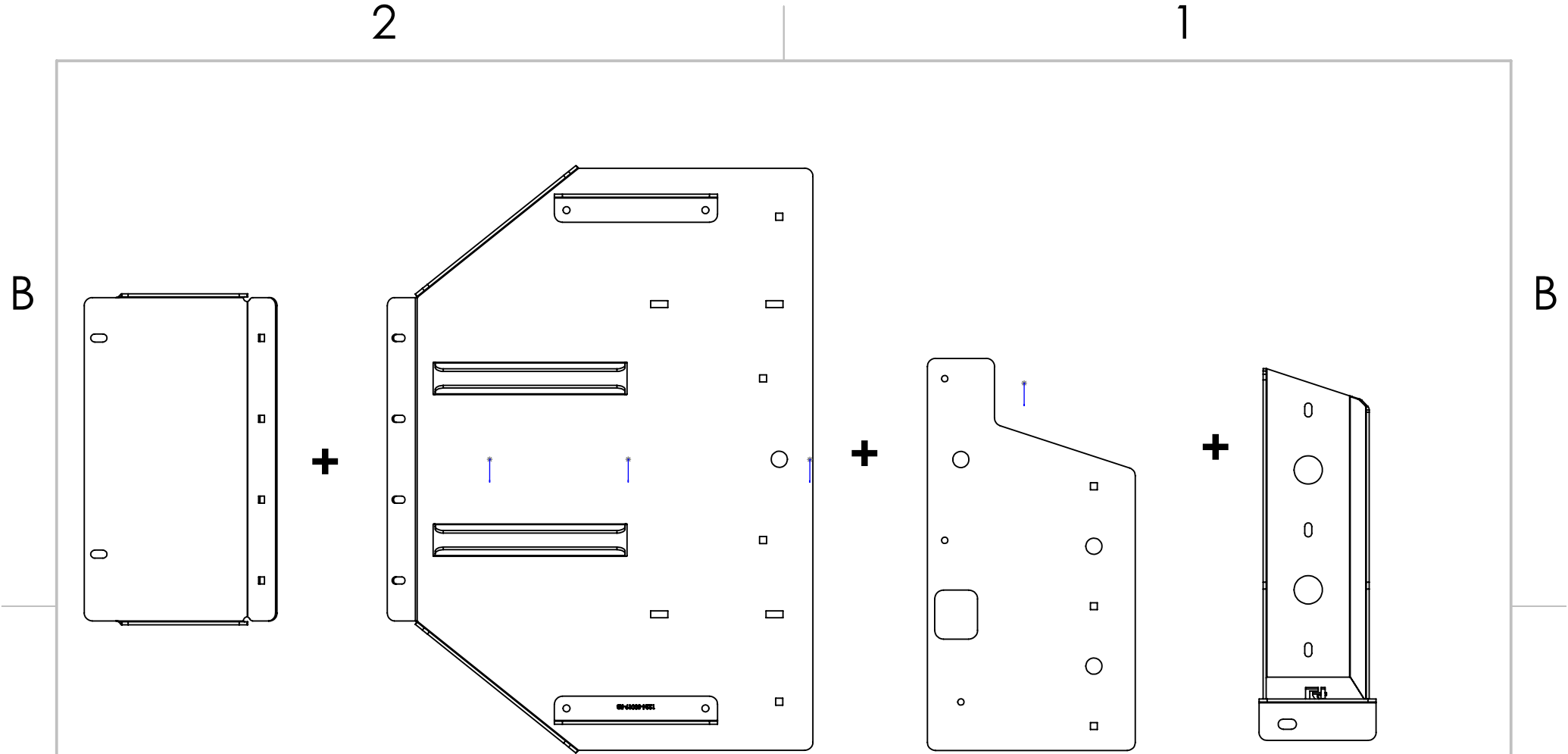
MATERIAL

	NAME	DATE
DRAWN	EJK	3/19/25
CHECKED		
ENG APPR.		
MFG APPR.		
Q.A.		
COMMENTS:		

**C4 FABRICATION**

TITLE:  
24+ Tacoma & Land Cruiser  
250 Series Skid Plates

SIZE	DWG. NO.	REV
<b>A</b>		




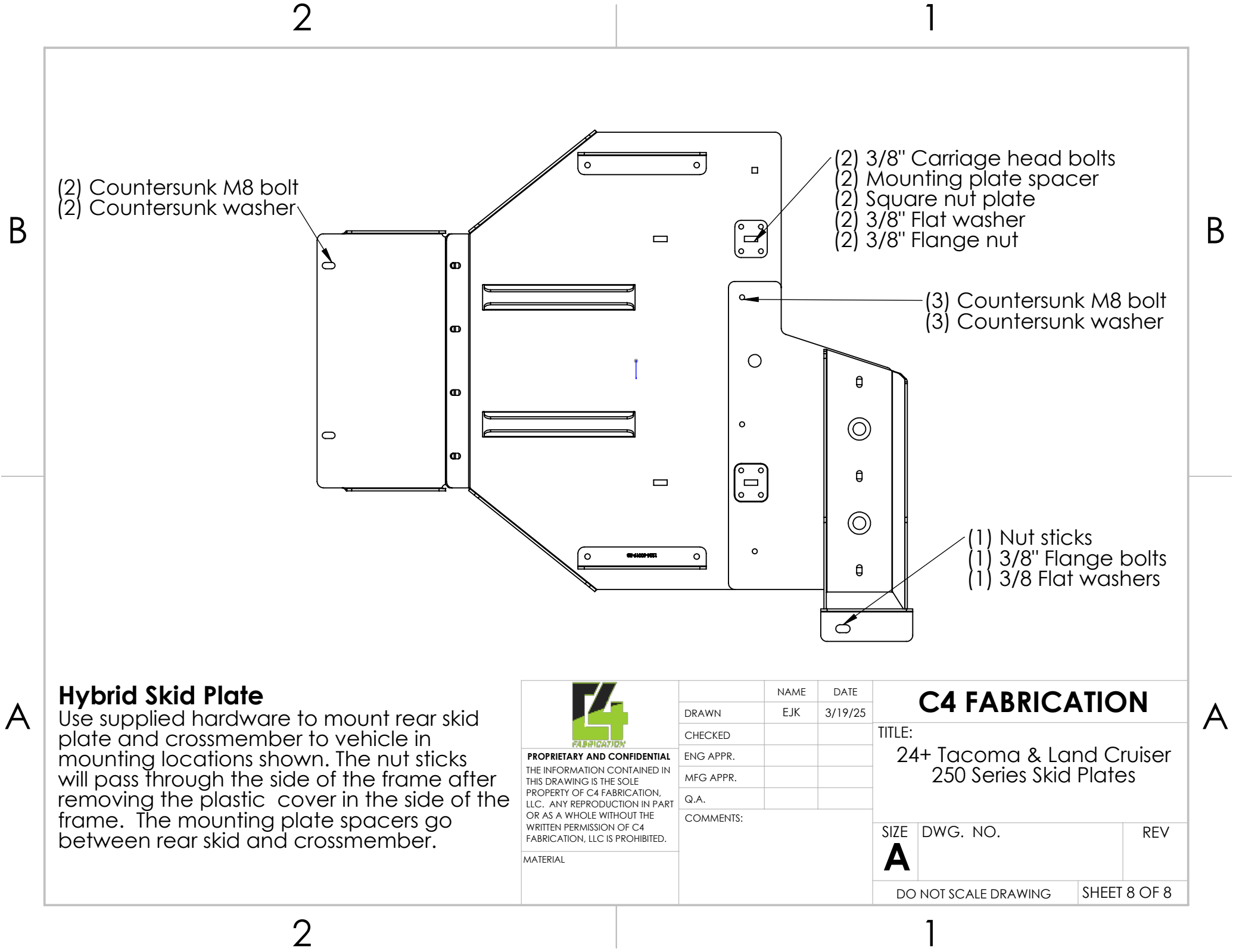
**Non-Hybrid Skid Plate Assembly**

Use supplied 3/8" carriage head bolts, flat washers, and flange nuts respectively to attach the sway bar disconnect skid or non-sway bar disconnect skid to the rear skid.

Use supplied 3/8" carriage head bolts, flat washers, and flange nuts respectively to attach the support flanges to the rear skid'

Use supplied 3/8" carriage head bolts, flat washers, and flange nuts respectively to attach the crossmember to the rear skid. Then attach two rear skid plates together.

 <b>PROPRIETARY AND CONFIDENTIAL</b> THE INFORMATION CONTAINED IN THIS DRAWING IS THE SOLE PROPERTY OF C4 FABRICATION, LLC. ANY REPRODUCTION IN PART OR AS A WHOLE WITHOUT THE WRITTEN PERMISSION OF C4 FABRICATION, LLC IS PROHIBITED.		NAME	DATE	<b>C4 FABRICATION</b> TITLE: 24+ Tacoma & Land Cruiser 250 Series Skid Plates	
	DRAWN	EJK	3/19/25		
	CHECKED				
	ENG APPR.				
	MFG APPR.				
MATERIAL	Q.A.			SIZE	DWG. NO.
	COMMENTS:			<b>A</b>	REV
				DO NOT SCALE DRAWING	SHEET 7 OF 8



## Hybrid Skid Plate

Use supplied hardware to mount rear skid plate and crossmember to vehicle in mounting locations shown. The nut sticks will pass through the side of the frame after removing the plastic cover in the side of the frame. The mounting plate spacers go between rear skid and crossmember.



**PROPRIETARY AND CONFIDENTIAL**  
THE INFORMATION CONTAINED IN THIS DRAWING IS THE SOLE PROPERTY OF C4 FABRICATION, LLC. ANY REPRODUCTION IN PART OR AS A WHOLE WITHOUT THE WRITTEN PERMISSION OF C4 FABRICATION, LLC IS PROHIBITED.

MATERIAL

	NAME	DATE
DRAWN	EJK	3/19/25
CHECKED		
ENG APPR.		
MFG APPR.		
Q.A.		
COMMENTS:		

## C4 FABRICATION

TITLE:

24+ Tacoma & Land Cruiser  
250 Series Skid Plates

SIZE	DWG. NO.	REV
<b>A</b>		

DO NOT SCALE DRAWING

SHEET 8 OF 8