

TIME FOR INSTALLATION

2-3 HOURS



MODERATE



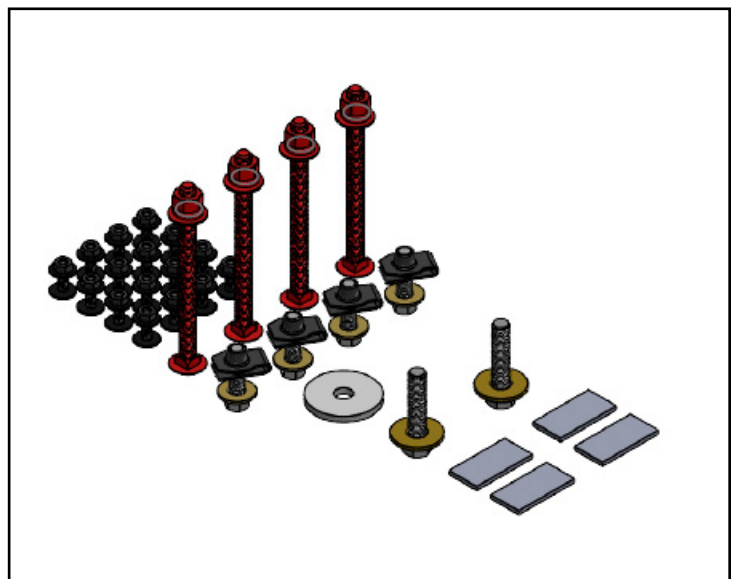
SOME EXPERIENCE RECOMMENDED

18+ Jeep JLU Wrangler Rock Slider Installation Guide

Contact RCI: SALES@RCIOFFROAD.COM
(970) 797-3089

Part Number	Description	Qty:
SM-01129	18+ Jeep JLU Rock Slider Driver	1
SM-01130	18+ Jeep JLU Rock Slider Passenger	1
SM-01132	Tread Plate Driver	1
SM-01133	Tread Plate Passenger	1
SM-01131	Slider Frame Plate Spacer	2
SM-01006	Mounting Plate #4	3
SM-01000	Half-Moon Washer	4
HK-00151	KIT: 18+ Jeep JLU Slider Hardware	1
HW-00021	M10-1.5 x 35mm Hex Flange Bolt	4
HW-00022	1/2 USS Flat Washer Thru Hard	2
HW-00023	M10-1.5 U-Nut .90mm	4
HW-00026	3/8 USS Flat Washer Thru Hard	4
HW-00028	Full Moon Spacer	2
HW-00044	7/16 USS Flat Washer Zinc	4
HW-00045	7/16 Split Lock Washer Zinc	4
HW-00047	7/16-14 FIN Hex Nut GR-5 Zinc	4
HW-00049	7/16-14 x 5-1/2 Carriage Bolt	4
HW-00203	M12-1.5 x 50mm Hex Flange Bolt	2
HW-00204	2x1" Double Sided Tape	4
HW-00017	1/4-20 x 7/8 Button SOC Cap Black	16
HW-00031	1/4-20 Keps Nut 18-8 S.S. Black	16
HW-00019	1/4 USS Flat Washer Black Zinc	32

*For tread plate installations only



Caution: Use hand tools, impact wrenches may cause damage if over torqued.

Read the entire notes and instructions before installation.

NOTE: For installations with pinch seam covers purchased, those will need to be installed prior to the rock slider installation. Refer to the 18+ Jeep JLU Pinch Seam Cover Installation Guide for instruction.

Installation Notes

Installation Notes:

RH refers to the passenger side of the vehicle.

LH refers to the driver side of the vehicle.

Always use the proper torque specifications.

If applicable to this installation, torque specifications will be listed throughout the document.

Please read all of these instructions and familiarize yourself with the complete process **BEFORE** you begin.

General Safety:

Park your car in a safe, well lit, level area.

Shut the engine off and remove the key from the ignition switch.

Make sure any remote start devices are properly disabled.

ALWAYS wear safety glasses.

Make sure the parking brake is applied until the vehicle is safely lifted and supported.

Whether lifting a vehicle using an automotive lift or a hydraulic jack, utilize the factory specified lift points.

Lifting a vehicle in an incorrect location can cause damage to the suspension/running gear.

ALWAYS support the vehicle with properly rated jack stands.

ALWAYS read and follow all safety information and warnings for the equipment you are using.

Required Tools:

1/4", 3/8" & 1/2" Socket Sets & Ratchets

Floor Jack

Jack Stands

Combination Wrench Set

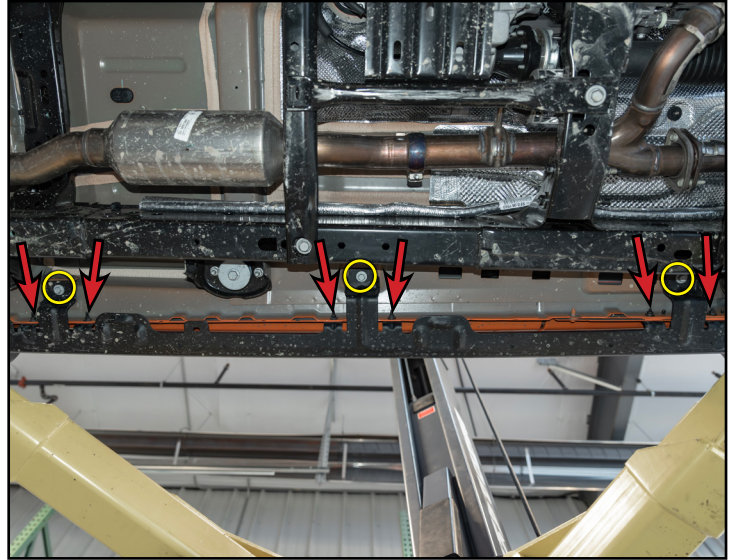
Torque Wrenches

Section 1: Removing the Stock Components

Step #1 | 10mm Socket, 13mm Socket & Ratchet

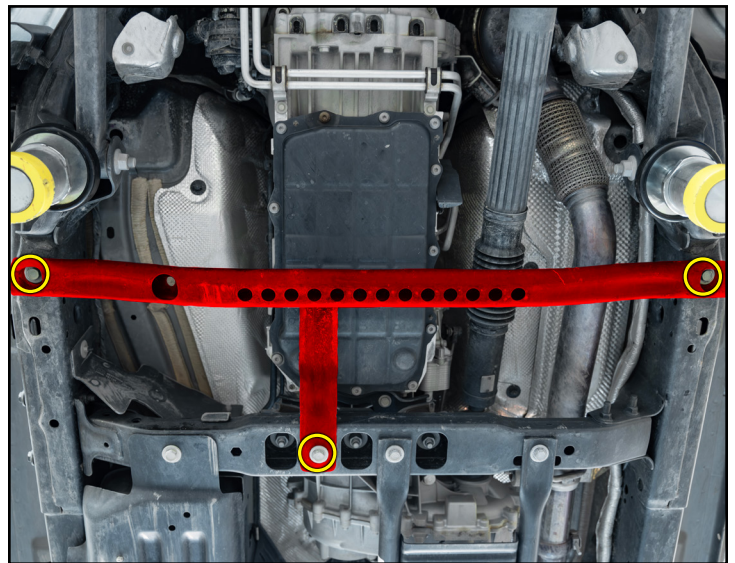
Remove all of the components and hardware from its packaging, then verify all the components are present.

If equipped with OEM rock rails: Remove the nuts (arrows) and bolts (circled in **YELLOW**) that secure the OEM rock rails, then remove the rock rails from the vehicle. Repeat for the opposite side.



Step #2 | 18mm Socket & Ratchet

Support the front cross brace (highlighted in **RED**) from underneath, then remove the bolts (circled in **YELLOW**) that secure the front cross brace to the vehicle. Remove the front cross brace and set it aside.

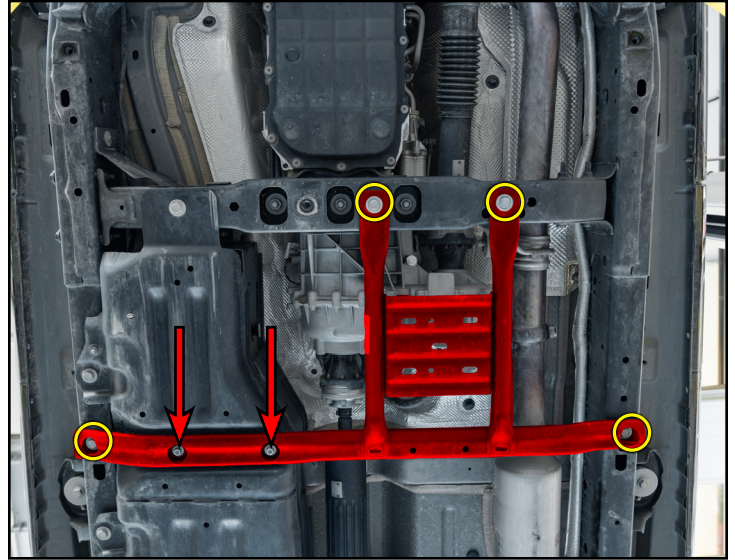


Section 1: Removing the Stock Components

Step #3a 13mm Socket, 18mm Socket & Ratchet

Support the rearmost cross member (highlighted in **RED**) from underneath. Remove the nuts (arrows), then remove the bolts (circled in **YELLOW**) that secure the rear cross member to the vehicle. Remove the cross member and set it aside.

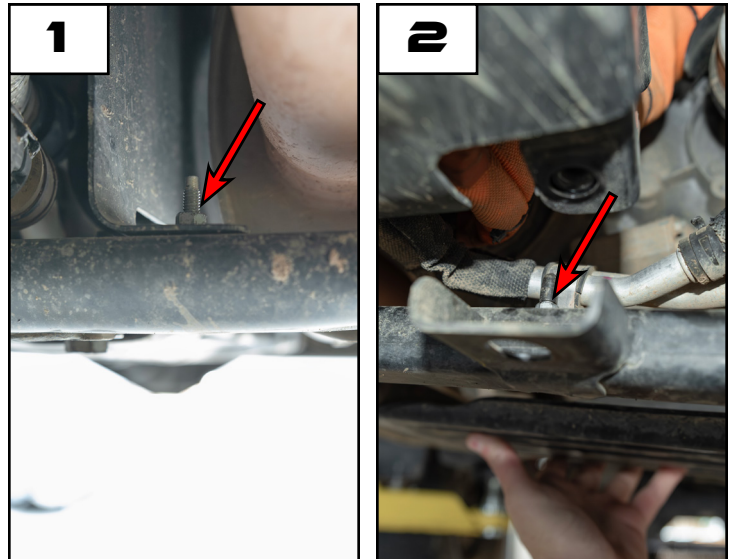
For NON-4xE Installations: skip ahead to **step 6**.



Step #3b 10mm Socket & Ratchet

For 4XE installations only: Remove the nut (arrow in **photo #1**) that secures the bracket to the rearmost cross member.

Remove the nut (arrow in **photo #2**) that secure the lines to the rearmost crossmember.

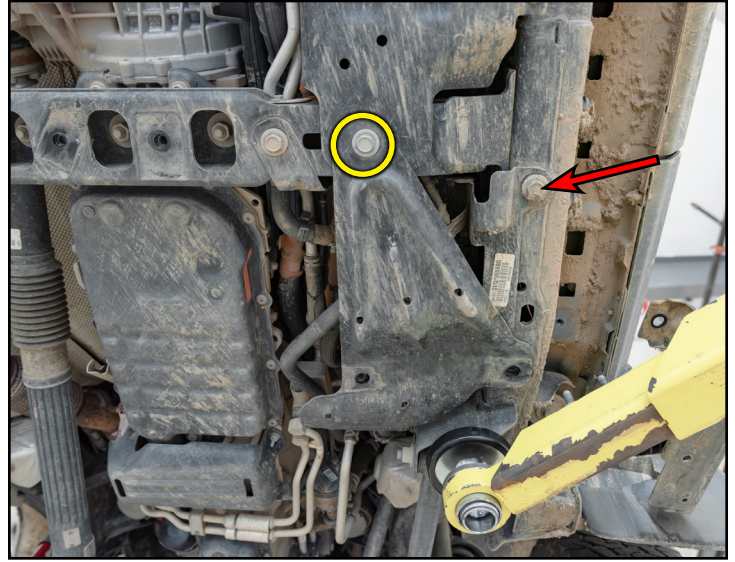


Section 1: Removing the Stock Components

Step #4 | 18mm Socket & Ratchet

For 4XE installations only: remove the bolt that secures the front skid plate to the vehicle, then remove the skid plate and set it aside.

Remove the bolt (arrow) that secures the bracket to the frame and set it aside.



Step #5 | Trim Removal Tool

For 4XE installations only: free the clip (arrow) that secures the ground wire to the LH frame rail.



Section 1: Removing the Stock Components

Step #6 | Floor Jack -OR- Jack Stands

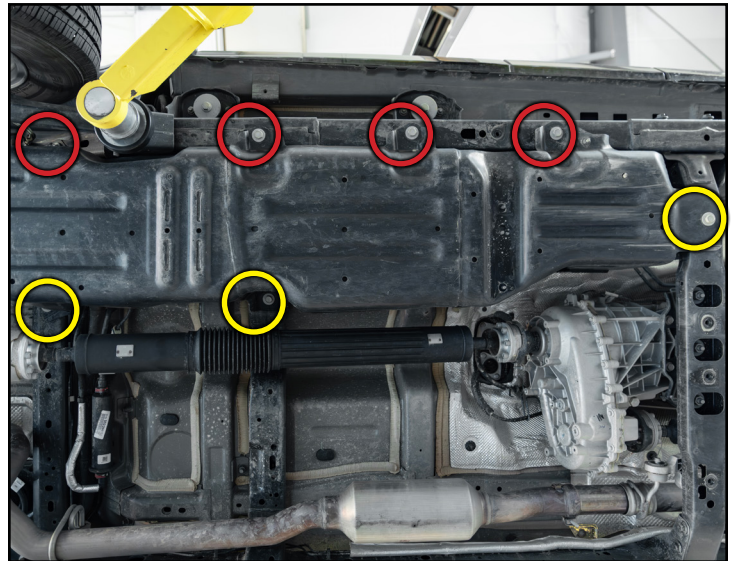
Support the fuel tank from underneath.



Step #7 | 18mm Socket & Ratchet

Remove the four bolts (circled in **RED**) from the RH frame that secure the fuel tank skid to the RH frame rail and set them aside.

Loosen the remaining bolts (circled in **YELLOW**) that secure the fuel tank to the underside of the vehicle, then lower the fuel tank skid plate to create enough room to install the new RH rock slider and install the carriage bolt plates during the installation process.

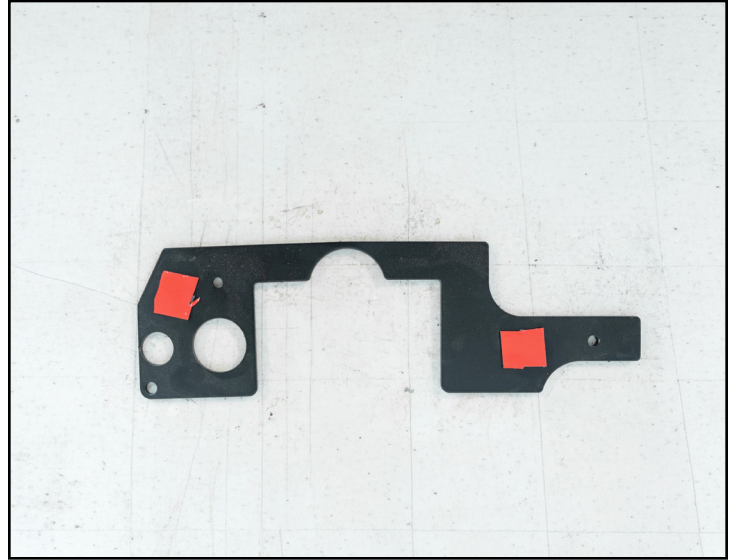


Tech tip: During the installation process for the RH slider, it may be easier to fully lower the fuel tank and fuel tank skid plate completely to gain better access when it becomes time to install the carriage bolt plates.

Section 2: Installing the New Rock Sliders

Step #1

Prepare the provided frame plate spacers by peeling the protective backing off of one side of the provided double sided tape sections, then apply it to the provided spacer as shown. Repeat this step for the opposite slider.



***NOTE:** provided adhesive may vary.

Step #2

Prepare the rock slider for installation by utilizing provided 1/4 screws (highlighted in **GREEN**) and slide them through the locations on the slider frame plate as shown.

Peel the remaining protective backing off of the previously installed double sided tape, then align the holes with the screws and slide the spacer on them until it is flush with the frame plate. Press the spacer toward the frame plate to ensure proper adherence.

Repeat this step for the opposite slider.

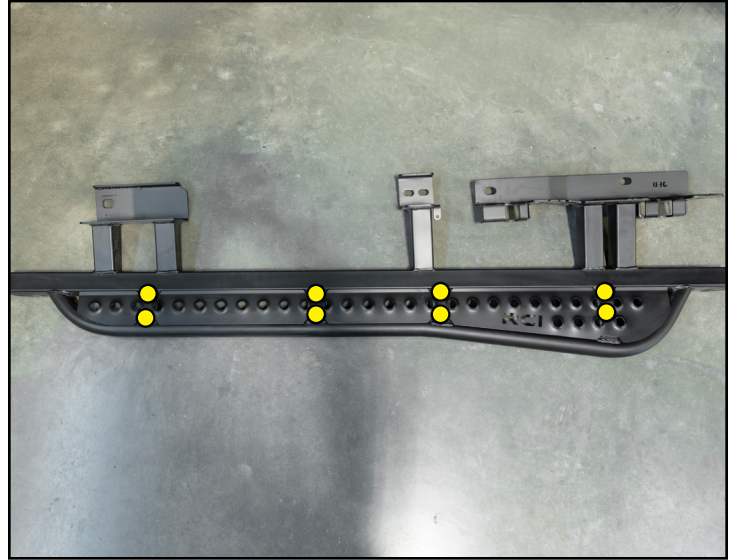


***LH rock slider shown.**

Section 2: Installing the New Rock Sliders

Step #3 | 4mm Hex & 7/16 Socket & Ratchet

For tread plate installations only: Install the provided tread plates onto the rock sliders and secure them using the provided 1/4" hardware (**YELLOW** circles).



Step #4 | Floor Jack & Jack Stands

Lift the RH slider from underneath up to the frame on the RH side of the vehicle.

Tech tip: Having a friend to assist, along with using a floor jack and jack stands will make this installation easier.

CAUTION: Be careful when installing the slider not to pinch or damage any frame mounted wiring, lines or hoses.



NOTE: For installations with pinch seam covers purchased, those will need to be installed prior to the rock slider installation. Refer to the 18+ Jeep JLU Pinch Seam Cover Installation Guide for instruction.

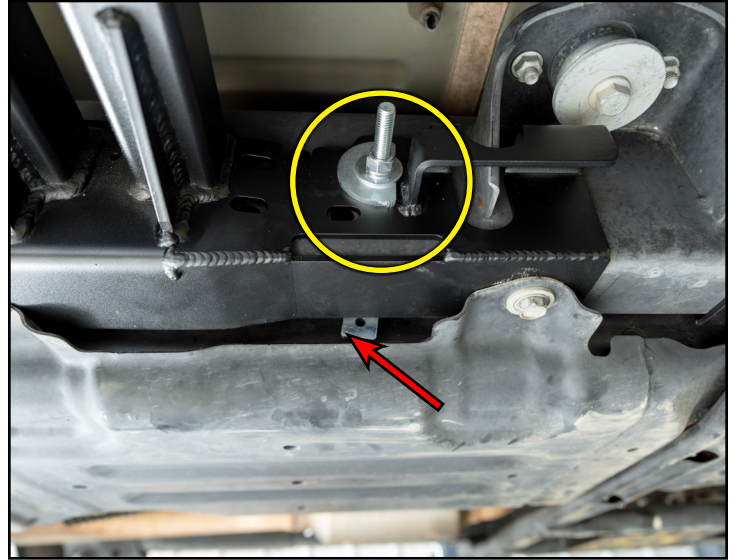
Section 2: Installing the New Rock Sliders

Step #5 | 11/16 Socket & Ratchet

Install the provided half-moon washer, flat washer, split-lock washer and hex nut onto the 7/16" carriage bolt.

Install the carriage bolt assembly (circled in **YELLOW**) through the outer RH rear slider frame plate frontmost location and through the outer RH frame rail.

Hook a carriage bolt plate onto the frontmost carriage bolt assembly, then tighten the hardware until hand tight.

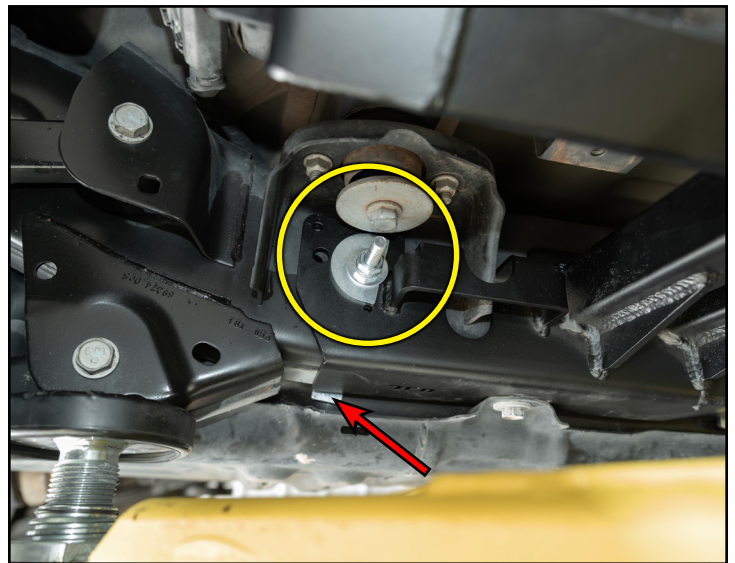


Step #6 | 11/16 Socket & Ratchet

Install the provided half-moon washer, flat washer, split-lock washer and hex nut onto the 11/16" carriage bolt.

Install the carriage bolt assembly (circled in **YELLOW**) through the outer RH rear slider frame plate rearmost location and through the outer RH frame rail.

Hook a carriage bolt plate onto the rearmost carriage bolt assembly, then tighten the hardware until hand tight.

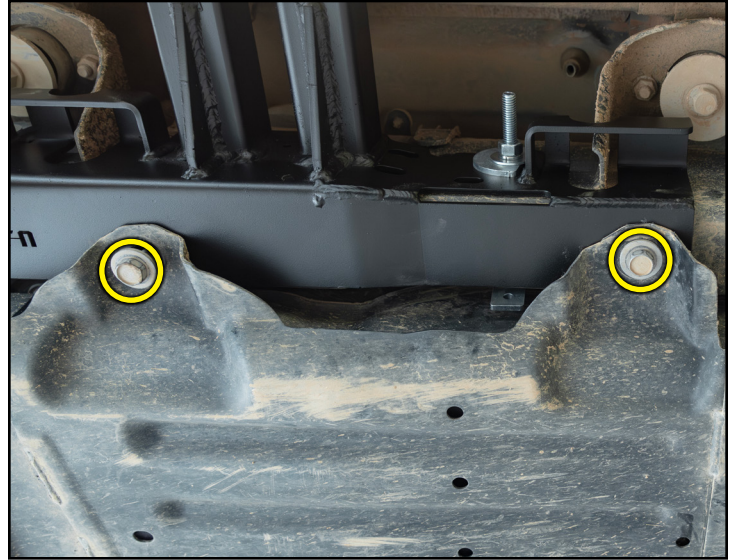


Section 2: Installing the New Rock Sliders

Step #7 | 18mm Socket & Ratchet

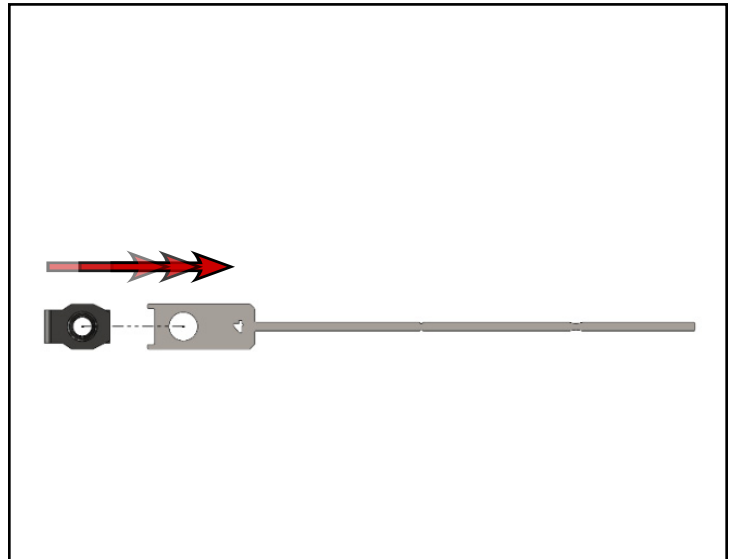
Align the mounting locations of the OEM fuel tank skid plate and the mounting locations at the bottom of the slider frame plates with the mounting locations on the bottom of the RH frame rail.

Once desired fitment has been achieved reinstall the OEM bolts (circled in **YELLOW**) to secure the slider frame plate and fuel tank skid plate to the frame rail, then tighten the hardware until hand tight.



Step #8

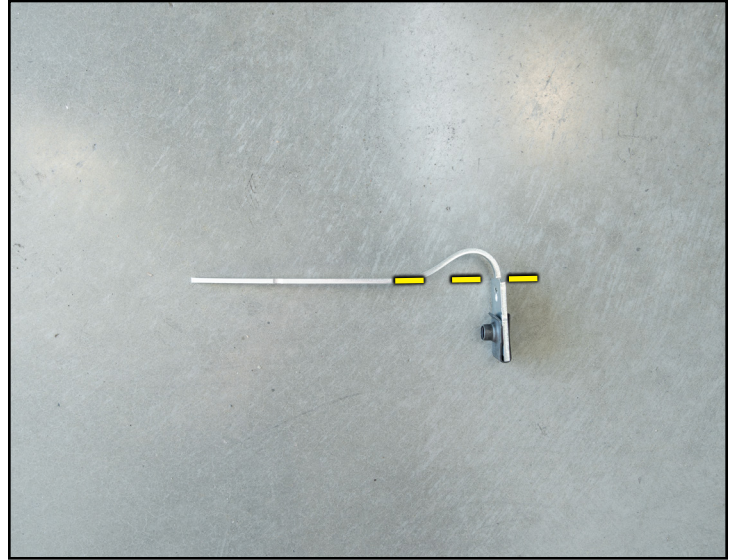
Prepare the provided MP4 bracket by attaching a speed clip to the mounting plate.



Section 2: Installing the New Rock Sliders

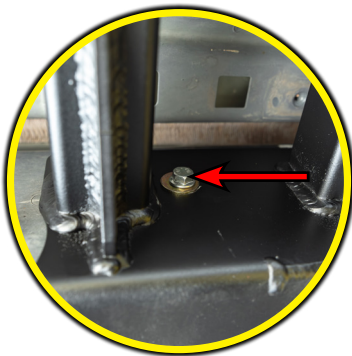
Step #9 | Locking Pliers -OR- Bench Vice

Bend the assembled MP4 bracket and align the bracket surface (dashed line) with the mounting plate surface as shown.



Step #10 | 15mm Socket & Ratchet

Install the prepared MP4 through the inside frame (arrow) and align the speed clip with the front mounting location, then secure it using the provided M10 hardware (arrow in inset photo) and tighten it until snug.

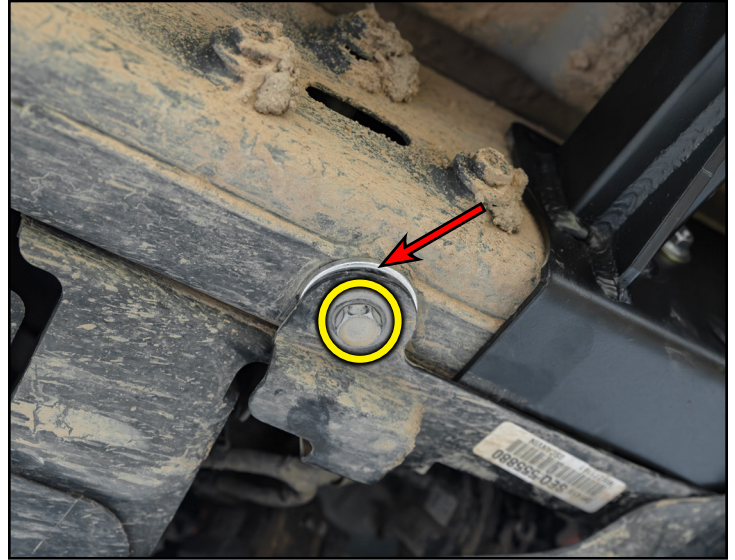


For NON-4XE installations only: Skip ahead to ***step 12.***

Section 2: Installing the New Rock Sliders

Step #11 18mm Socket & Ratchet

For 4XE installations only: Reinstall the RH front bracket and install a provided spacer (arrow) in between the bracket and the frame. Secure the bracket by reinstalling the OEM bolt (circled in **YELLOW**) previously removed.



Step #12 18mm Socket & Ratchet

For 4XE installations only: Reinstall the front right skid plate and reinstall the OEM bolt (circled in **YELLOW**) previously removed to secure it in place.

Secure the ground strap clip into the hole on the slider frame plate (as shown in the inset photo).



Section 2: Installing the New Rock Sliders

Step #13 | Floor Jack & Jack Stands

Lift the LH slider from underneath up to the frame on the LH side of the vehicle.

Tech tip: Having a friend to assist, along with using a floor jack and jack stands will make this installation easier.

CAUTION: Be careful when installing the slider not to pinch or damage any frame mounted wiring, lines or hoses.

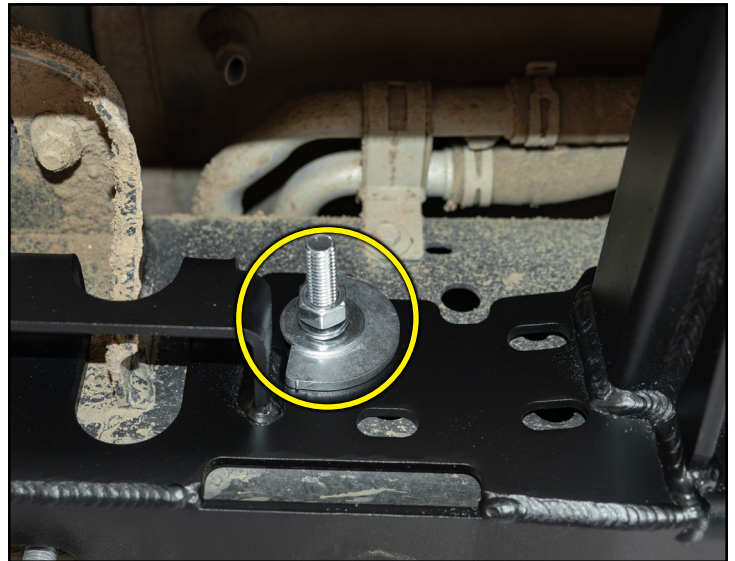


Step #14 | 11/16 Socket & Ratchet

Install the provided half-moon washer, flat washer, split-lock washer and hex nut onto the 7/16" carriage bolt.

Install the carriage bolt assembly (circled in **YELLOW**) through the outer LH front slider frame plate and through the outer LH frame rail.

Hook a carriage bolt plate (arrow in inset photo) onto the frontmost carriage bolt assembly, then tighten the hardware until hand tight.



Section 2: Installing the New Rock Sliders

Step #15 | 11/16 Socket & Ratchet

Install the provided half-moon washer, flat washer, split-lock washer and hex nut onto the 11/16" carriage bolt.

Install the carriage bolt assembly (circled in **YELLOW**) through the outer LH rear slider frame plate and through the outer LH frame rail.

Hook a carriage bolt plate (arrow in inset photo) onto the frontmost carriage bolt assembly, then tighten the hardware until hand tight.



Step #16 | 19mm Socket & Ratchet

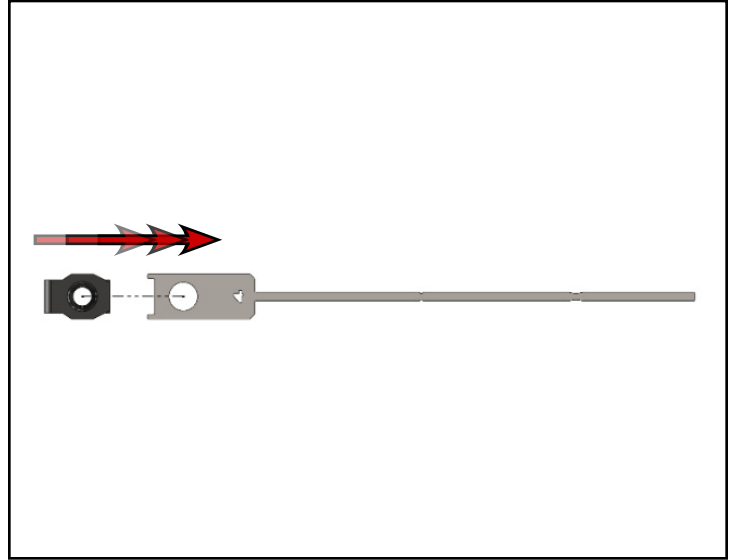
Align the mounting locations on the bottom of the slider frame plates with the threaded holes on the bottom of the LH frame rail. Install the provided M12 hardware (circled in **YELLOW**) to secure it in place.



Section 2: Installing the New Rock Sliders

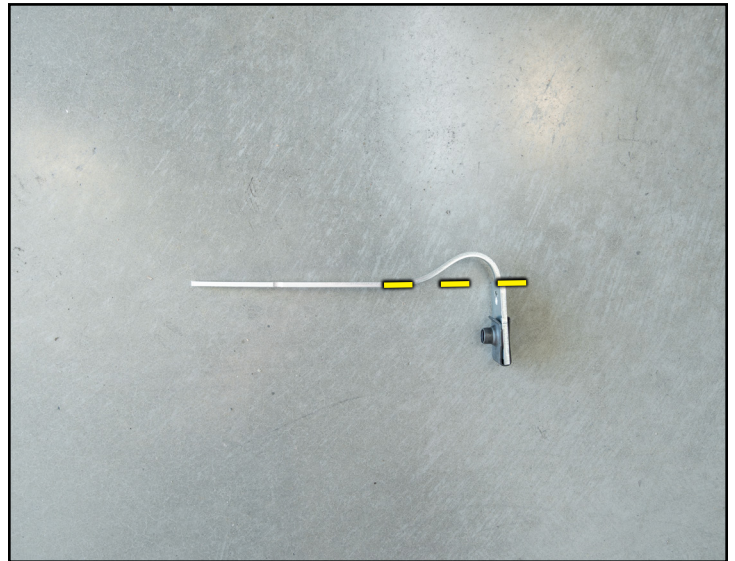
Step #17

Prepare the provided MP4 bracket by attaching a speed clip to the mounting plate.



Step #18 Locking Pliers -OR- Bench Vise

Bend the an assembled MP4 bracket and align the bracket surface (dashed line) with the mounting plate surface as shown.



Section 2: Installing the New Rock Sliders

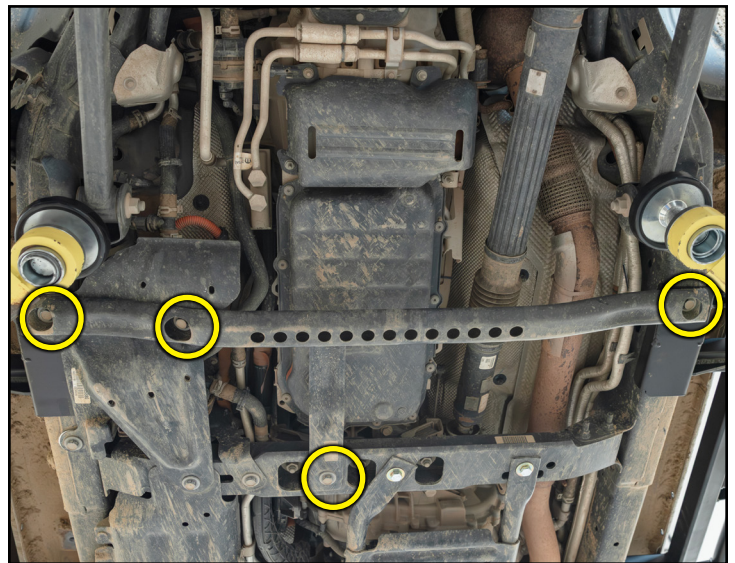
Step #19 | 15mm Socket & Ratchet

Install the prepared MP4 through the inside frame (arrow) and align the speed clip with the front mounting location, then secure it using the provided M10 hardware (arrow in inset photo).



Step #20 | 18mm Sockets & Ratchet

Reinstall the frontmost cross member, then reinstall the OEM bolts (circled in **YELLOW**) and tighten them until hand tight to secure the cross member in place.

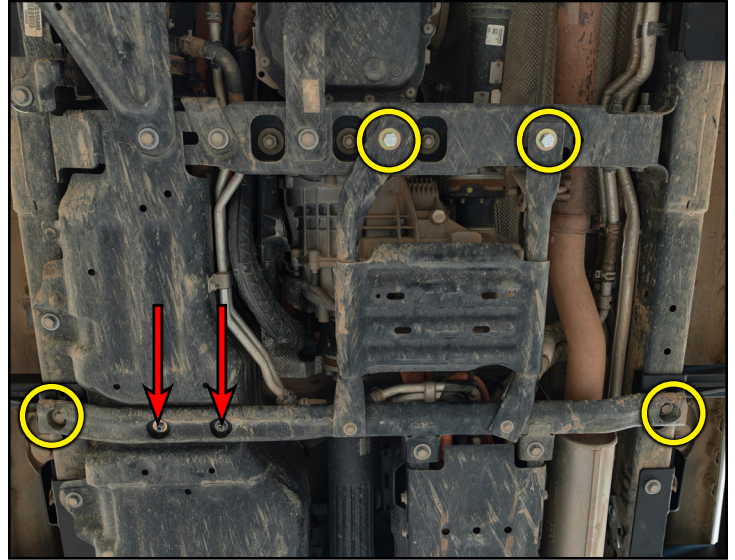


Section 2: Installing the New Rock Sliders

Step #21 | 13mm, 18mm Sockets & Ratchet

Reinstall the transfer case skid plate, then reinstall the OEM bolts (circled in **YELLOW**) and nuts (arrows). Tighten the hardware until hand tight to secure the cross member in place.

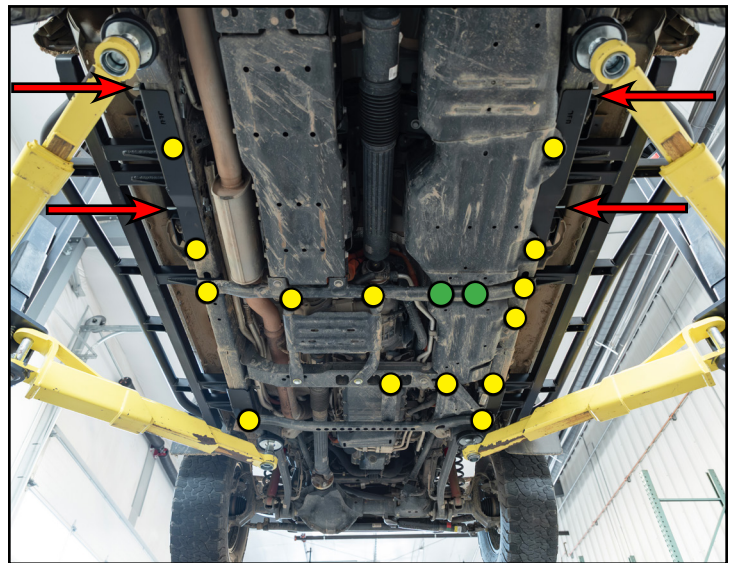
For 4xE installations only: Reinstall the M6 nuts previously removed that secure the lines and upper bracket to the rearmost cross member (not shown).



Step #22 | 13mm, 15mm, 18mm, 19mm Sockets

Once all of the hardware is installed and desired fitment has been achieved, torque all of the hardware to the following specs:

- 7/16 hardware: 20 Ft-lbs (27 Nm) (arrows)
- M12 bolts: 48 Ft-lbs (65 Nm) (**YELLOW** circles)
- M8 nuts: 18 Ft-lbs (24 Nm) (**GREEN** circles)

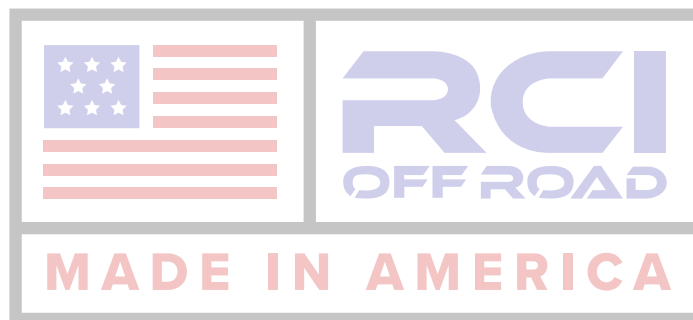


CONGRATULATIONS, YOUR INSTALLATION IS COMPLETE!

ENJOY YOUR NEW RCI PROTECTION!



**Share your new install with us on social media!
We love seeing our products in the wild!**



Follow us on social media:
[instagram.com/rcioffroad/#](https://www.instagram.com/rcioffroad/)
[facebook.com/RCIOffroad](https://www.facebook.com/RCIOffroad)
[youtube.com/@RCIOFFROAD](https://www.youtube.com/@RCIOFFROAD)

Contact:
1.970.797.3089
SALES@RCIOFFROAD.COM
6701 N. FRANKLIN AVE. LOVELAND, CO 80538

These instructions are provided as a courtesy by RCI Offroad

Disclaimer: The products sold by RCI Metalworks are intended for off-road use only, should not be modified, and are for use only on the vehicle(s) specifically stated. RCI Metalworks makes no warranties express or implied, including of fitness for a particular purpose or merchantability. RCI Metalworks will not be liable for any damages arising out of the use or misuse of its products. It is the customers' responsibility to ensure the products are safely and properly attached to the vehicle, and all products should be installed by trained professionals. We strive to maintain extremely high-quality standards; however, all RCI Metalworks products are individually handcrafted, may vary slightly, and may contain minor imperfections. Due to the nature of raw aluminum, the material may have minor scratches and other blemishes caused by the manufacturing process, especially on the back side of product. RCI Metalworks is constantly seeking to improve its products and reserves the right to make changes to any product.